

SEA HORSE — JEFFERSON



Builder: JEFFERSON

Year Built: 1988

Model: Motor Yacht

Price: PRICE ON APPLICATION

Location: United States

LOA: 46' (14.02mm)

Beam: 14.08

Min Draft: 3' 7" (1.09mm)

Max Draft: 4' (1.22mm)

Cruise Speed: 10 Knots Kts. (12 MPH)

Max Speed: 18 Knots Kts. (21 MPH)

Our experienced yacht broker, Andrey Shestakov, will help you choose and buy a yacht that best suits your needs **Sea Horse — JEFFERSON** from our catalogue. Presently, at Shestakov Yacht Sales Inc., we have a wide variety of yachts available on our sale's list. We also work in close contact with all the big yacht manufacturers from all over the world.

If you would like to buy a yacht **Sea Horse — JEFFERSON** or would like help answering any questions concerning purchasing, selling or chartering a yacht, please call **+1(954)274-4435**

TABLE OF CONTENTS

TABLE OF CONTENTS	2
SPECIFICATIONS	4
Overview	4
Basic Information	4
Dimensions	4
Speed, Capacities and Weight	4
Accommodations	5
Hull and Deck Information	5
Engine Information	5
PHOTOS	6
1	6
2	6
3	6
4	6
5	7
7	7
8	7
9	7
IMG_4028	8
IMG_4029	8
IMG_4030	8
IMG_4031	8
IMG_4032	9
IMG_4033	9
IMG_4034	9
IMG_4035 (1)	9
IMG_4036 (1)	10
IMG_4036	10

IMG_4037 (1)	10
IMG_4038 (1)	10
IMG_4039	11
IMG_4040	11
IMG_4049	11
IMG_4050	11
IMG_4052	12
IMG_4051	12
CONTACTS	13
Contact details	13
Telephones	13
Office hours	13
Address	13

SPECIFICATIONS

Overview

The Jefferson 46 Motor Yacht is considered a lot of boat for the money compared with most domestic motor yachts her size. Heavily built on a solid fiberglass hull and boasting a full teak interior, the conservative styling of the 46 has held up very well over the years. Several two-stateroom floorplans were offered over the course of her production life, all with the galley down, and all with a standard lower helm. A full entertainment center was built into the salon, and the master stateroom is notable for its generous storage and large en suite head compartment. Topside, the afterdeck of the Jefferson 46 is very spacious, and the equally large flybridge is arranged with the helm forward and guest seating aft. A radar arch, bimini top with full enclosure, swim platform and bow pulpit are standard, and wide side decks provide secure access to the foredeck. She holds twin turbo 3208 Cat diesels. "Sea Horse" is a well kept vessel and is ready for her new owner. 46' Jefferson Sundeck Hull

Basic Information

Category: Motor Yacht

Model Year: 1988

Year Built: 1988

Country: United States

Dimensions

LOA: 46' (14.02mm)

Beam: 14.08

Min Draft: 3' 7" (1.09mm)

Max Draft: 4' (1.22mm)

Speed, Capacities and Weight

Cruise Speed: 10 Knots Kts. (12 MPH)

Max Speed: 18 Knots Kts. (21 MPH)

Water Capacity: 200 Gallons

Fuel Capacity: 350 Gal Gallons

Accommodations

Total Cabins: 2

Total Berths: 3

Total Heads: 2

Hull and Deck Information

Hull Material: Fiberglass

Engine Information

Engines: 1

Manufacturer: Caterpillar

Engine Type: Inboard

Fuel Type: Diesel

PHOTOS

1



2



3



4



5



7



8



9



IMG_4028



IMG_4029



IMG_4030



IMG_4031



IMG_4032



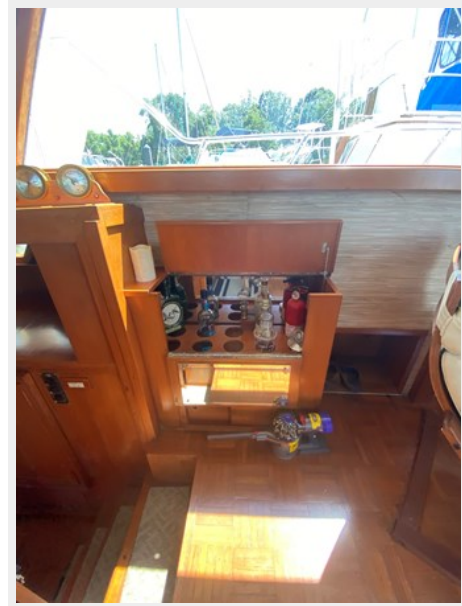
IMG_4033



IMG_4034



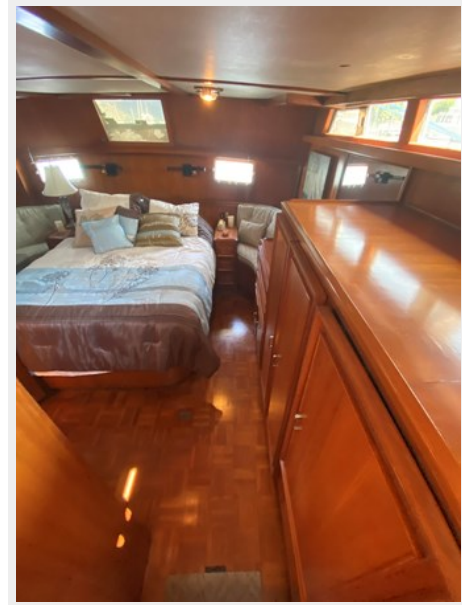
IMG_4035 (1)



IMG_4036 (1)



IMG_4036



IMG_4037 (1)



IMG_4038 (1)



IMG_4039



IMG_4040



IMG_4049



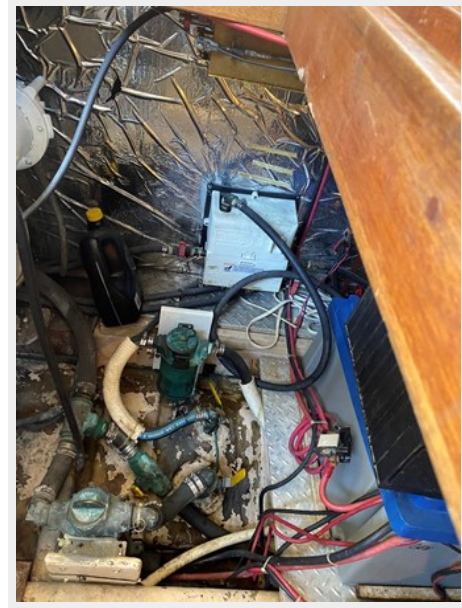
IMG_4050



IMG_4051



IMG_4052



CONTACTS

Andrey Shestakov, leading yacht broker of the sales department of Shestakov Yacht Sales Inc. Shestakov Yacht Sales Inc., the official representative of the Miami/Fort Lauderdale FL headquarters.

Contact details

Email: andrey@shestakovyachtsales.com

Web: shestakovyachtsales.com/en/

Telephones

USA: +1(954)274-4435

Office hours

Monday – Saturday: **9:00 - 21:00** EDT

Sunday: **closed**

Address



Harbour Towne Marina, 850 NE 3rd St,
STE 213, Dania, FL 33004