

## WHITE PEARL — MAINSHIP



**Builder:** MAINSHIP

**Year Built:** 1997

**Model:** Trawler Yacht

**Price:** PRICE ON APPLICATION

**Location:** United States Virgin Islands

**LOA:** 39' 9" (12.12mm)

**Beam:** 14.16

**Max Draft:** 3' 8" (1.12mm)

**Cruise Speed:** 8 Knots Kts. (9 MPH)

**Max Speed:** 13 Knots Kts. (15 MPH)

Our experienced yacht broker, Andrey Shestakov, will help you choose and buy a yacht that best suits your needs **White Pearl — MAINSHIP** from **our catalogue**. Presently, at **Shestakov Yacht Sales Inc.**, we have a wide variety of yachts available on **our sale's list**. We also work in close contact with all the big **yacht manufacturers** from all over the world.

If you would like to buy a yacht **White Pearl — MAINSHIP** or would like help answering any questions concerning purchasing, selling or chartering a yacht, please call **+1(954)274-4435**

# TABLE OF CONTENTS

---

TABLE OF CONTENTS	2
SPECIFICATIONS	6
Overview	6
Basic Information	6
Dimensions	6
Speed, Capacities and Weight	6
Accommodations	6
Hull and Deck Information	6
Engine Information	7
PHOTOS	8
IMG_6143	8
IMG_6146	8
IMG_6147	8
IMG_6148	8
IMG_6151	9
IMG_6153	9
IMG_6154	9
IMG_6155	9
IMG_6156	10
IMG_6157	10
IMG_6150	10
IMG_6159	10
IMG_6160	11
IMG_6161	11
IMG_6162	11
IMG_6163	11
IMG_6165	12
IMG_6164	12

---

IMG_6166	12
IMG_6167	12
IMG_6168	13
IMG_6169	13
IMG_6171	13
IMG_6170	13
IMG_6172	14
IMG_6173	14
IMG_6176	14
IMG_6178	14
IMG_6179	15
IMG_6181	15
IMG_6182	15
IMG_6183	15
IMG_6184	16
IMG_6189	16
IMG_6190	16
IMG_6191	16
IMG_6192	17
IMG_6195	17
IMG_6196	17
IMG_6198	17
IMG_6199	18
IMG_6200	18
IMG_6201	18
IMG_6205	18
IMG_6206	19
IMG_6208	19
IMG_6211	19

---

---

IMG_6209	19
IMG_6212	20
IMG_6214	20
IMG_6215	20
IMG_6217	20
IMG_6220	21
IMG_6218	21
IMG_6221	21
IMG_6222	21
IMG_6223	22
IMG_6224	22
IMG_6225	22
IMG_6228	22
IMG_6229	23
IMG_6230	23
IMG_6232	23
IMG_6233	23
IMG_6234	24
IMG_6235	24
IMG_6236	24
IMG_6238	24
IMG_6240	25
IMG_6241	25
IMG_6242	25
IMG_6243	25
IMG_6244	26
IMG_6247	26
IMG_6249	26
IMG_6253	26

---

---

CONTACTS	27
Contact details	27
Telephones	27
Office hours	27
Address	27

---

# SPECIFICATIONS

---

## Overview

---

With a spacious interior, a large top deck boasting an outside helm station, White Pearl will have you cruising the waters in style, comfort and safety. Built to perform while providing all the amenities of home, she is the perfect fit for a couple looking to enjoy the best of the Virgin Islands or a family weekend liveaboard!

## Basic Information

---

**Category:** Trawler Yacht

**Model Year:** 1997

**Year Built:** 1997

**Country:** United States Virgin Islands

## Dimensions

---

**LOA:** 39' 9" (12.12mm)

**Beam:** 14.16

**Max Draft:** 3' 8" (1.12mm)

## Speed, Capacities and Weight

---

**Cruise Speed:** 8 Knots Kts. (9 MPH)

**Max Speed:** 13 Knots Kts. (15 MPH)

**Gross Tonnage:** 29 Pounds

**Water Capacity:** 190 Gallons

**Fuel Capacity:** 150 Gal Gallons

## Accommodations

---

**Total Cabins:** 2

**Total Heads:** 1

## Hull and Deck Information

---

**Hull Material:** Fiberglass

**Hull Color:** White

---

## Engine Information

---

**Engines:** 2

**Manufacturer:** Yanmar

**Engine Type:** Inboard

**Fuel Type:** Diesel

# PHOTOS

**IMG\_6143**



**IMG\_6146**



**IMG\_6147**



**IMG\_6148**





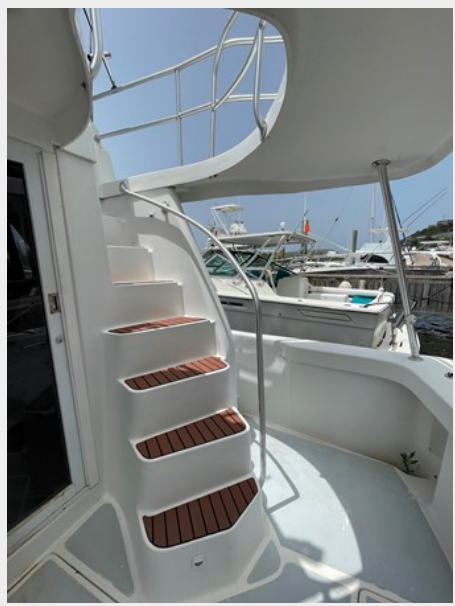
**IMG\_6151**



**IMG\_6153**



**IMG\_6154**



**IMG\_6155**



**IMG\_6156**



**IMG\_6157**



**IMG\_6150**



**IMG\_6159**



IMG\_6160



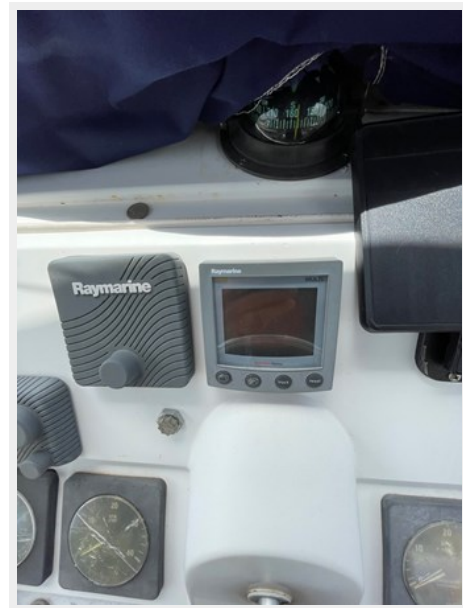
IMG\_6161



IMG\_6162



IMG\_6163



IMG\_6164



IMG\_6165



IMG\_6166



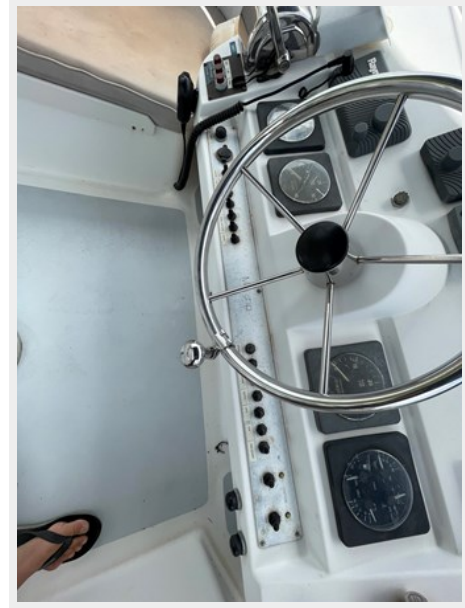
IMG\_6167



IMG\_6168



IMG\_6169



IMG\_6170



IMG\_6171



**IMG\_6172**



**IMG\_6173**



**IMG\_6176**



**IMG\_6178**



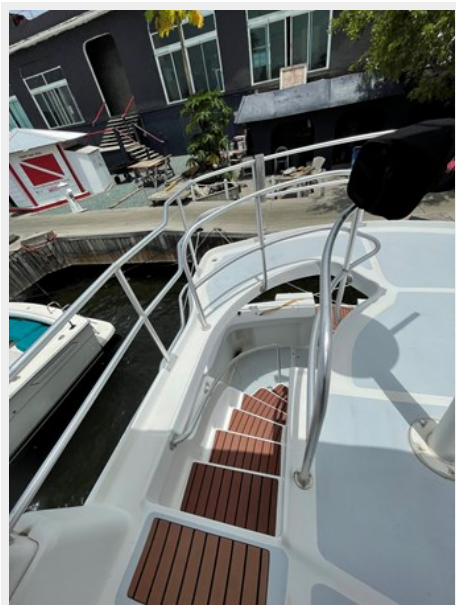
IMG\_6179



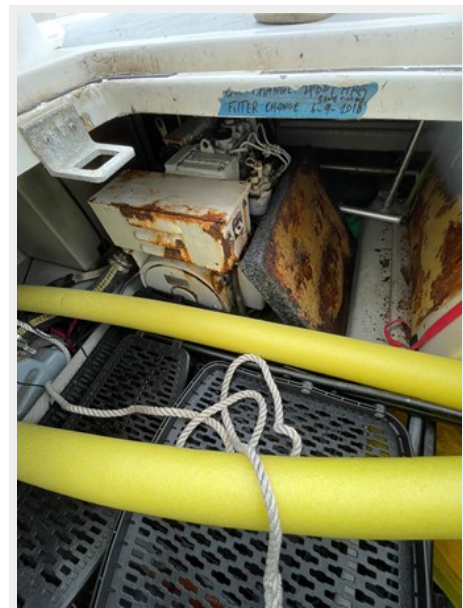
IMG\_6181



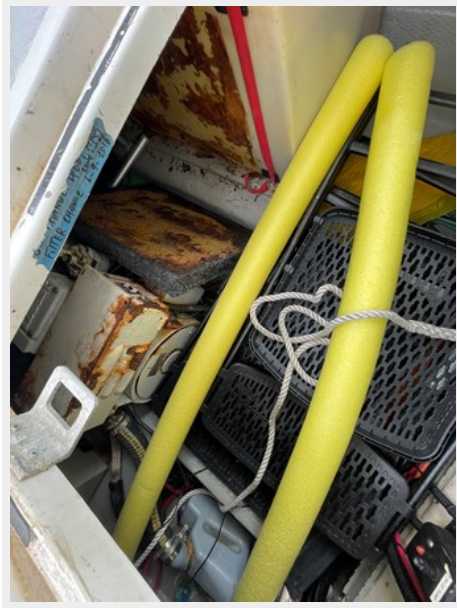
IMG\_6182



IMG\_6183



**IMG\_6184**



**IMG\_6189**



**IMG\_6190**



**IMG\_6191**

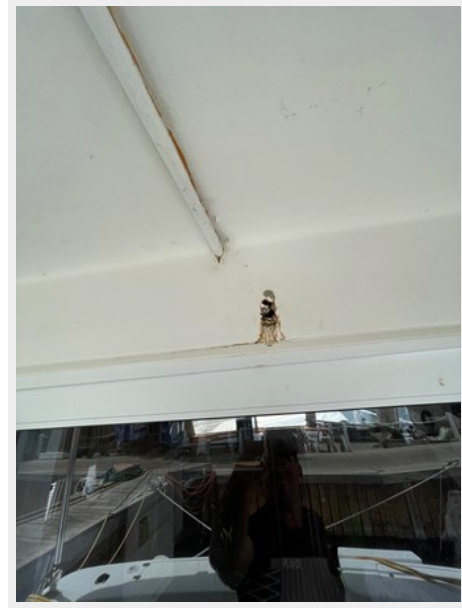




**IMG\_6192**



**IMG\_6195**



**IMG\_6196**



**IMG\_6198**



IMG\_6199



IMG\_6200



IMG\_6201



IMG\_6205



IMG\_6206



IMG\_6208



IMG\_6211



IMG\_6209



**IMG\_6212**



**IMG\_6214**



**IMG\_6215**



**IMG\_6217**



IMG\_6218



IMG\_6220



IMG\_6221



IMG\_6222



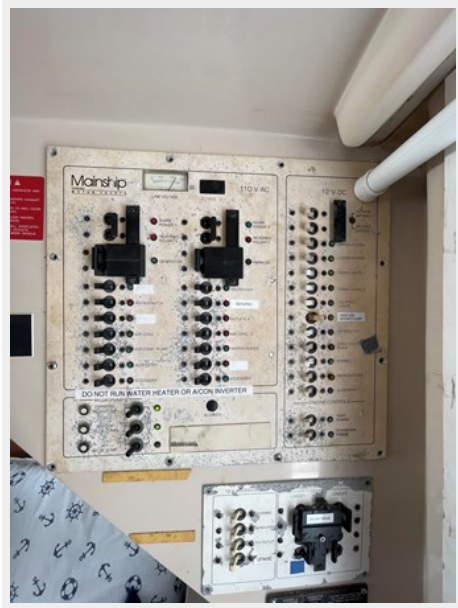
IMG\_6223



IMG\_6224



IMG\_6225



IMG\_6228



IMG\_6229



IMG\_6230



IMG\_6232



IMG\_6233



**IMG\_6234**



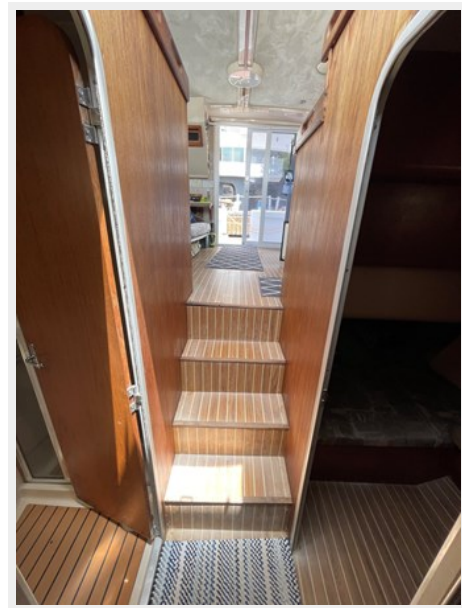
**IMG\_6235**



**IMG\_6236**



**IMG\_6238**





**IMG\_6240**



**IMG\_6241**



**IMG\_6242**



**IMG\_6243**



IMG\_6244



IMG\_6247



IMG\_6249



IMG\_6253



# CONTACTS

---

Andrey Shestakov, leading yacht broker of the sales department of Shestakov Yacht Sales Inc. Shestakov Yacht Sales Inc., the official representative of the Miami/Fort Lauderdale FL headquarters.

## Contact details

---

Email: **andrey@shestakovyachtsales.com**

Web: [shestakovyachtsales.com/en/](https://shestakovyachtsales.com/en/)

## Telephones

---

USA: **+1(954)274-4435**

## Office hours

---

Monday – Saturday: **9:00 - 21:00** EDT

Sunday: **closed**

## Address

---



Harbour Towne Marina, 850 NE 3rd St, STE 213, Dania, FL 33004