

## NAUTICAL NUT — MARLOW



**Builder:** MARLOW

**Year Built:** 2007

**Model:** Motor Yacht

**Price:** PRICE ON APPLICATION

**Location:** United States

**LOA:** 72' (21.95mm)

**Beam:** 20.16

**Max Draft:** 4' 10" (1.47mm)

**Max Speed:** 25 Knots Kts. (29 MPH)

Our experienced yacht broker, Andrey Shestakov, will help you choose and buy a yacht that best suits your needs **Nautical Nut — MARLOW** from **our catalogue**. Presently, at **Shestakov Yacht Sales Inc.**, we have a wide variety of yachts available on **our sale's list**. We also work in close contact with all the big **yacht manufacturers** from all over the world.

If you would like to buy a yacht **Nautical Nut — MARLOW** or would like help answering any questions concerning purchasing, selling or chartering a yacht, please call **+1(954)274-4435**

# TABLE OF CONTENTS

---

TABLE OF CONTENTS	2
SPECIFICATIONS	5
Overview	5
Basic Information	5
Dimensions	5
Speed, Capacities and Weight	5
Accommodations	5
Hull and Deck Information	6
Engine Information	6
PHOTOS	7
Starboard Side	7
Starboard Side	7
Bow	7
Nautical Nut	7
Nautical Nut	7
Portside	7
Portside	8
Aft Deck	8
Aft Deck facing Forward	8
Aft Deck facing Portside	8
Salon Interior	8
Salon facing Aft	8
Salon facing Starboard	9
Salon Portside Bar with Stairs	9
Galley	9
Dining Area	9
Mini Helm Station	9
MSR facing Aft	9

Master	10
MSR facing Portside	10
MSR Vainity	10
MRS Head	10
Companionway	10
VIP facing Forward	10
Guest Head	11
Starboard Guestroom	11
Portside Guestroom	11
Portside Guest Head	11
Commandbridge facing Forward Portside	11
Commandbridge facing Forward	11
Commandbridge Helm	12
Commandbridge Helm	12
Bow facing Aft	12
Bow	12
Nautical Nut Exterior	12
Marlow Explorer	12
Upper Aft Deck facing Portside	13
Upper Aft Deck	13
Upper Aft Deck Grill	13
Tender	13
Crew Quarters	13
Crew Quarters	13
Crew Head	14
Lazarette	14
Lazarette	14
Engine Room	14
Starboard Engine	14

---

Portside Engine	14
Nautical Nut Aerial	15
Nautical Nut Running	15
CONTACTS	16
Contact details	16
Telephones	16
Office hours	16
Address	16

---

# SPECIFICATIONS

---

## Overview

---

"Nautical Nut" is the ultimate Marlow Explorer. With her four (4) staterooms, three (3) heads, separate crew quarters with crew head, and state of the art Command Bridge, she has an abundance of luxurious space and storage. With newly upgraded Side Power Zero Speed Fin Stabilizer her proprietary Velocijet Strut Keels, this 72E-CB Marlow Explorer can handle just about any sea condition with relative ease while tracking unbelievably straight, like a train on tracks. This yacht has been kept in excellent condition and is ready for her next adventure anywhere in the world!

## Basic Information

---

**Category:** Motor Yacht

**Model Year:** 2007

**Year Built:** 2007

**Country:** United States

## Dimensions

---

**LOA:** 72' (21.95mm)

**LOD:** 77' 8" (23.67mm)

**Beam:** 20.16

**Max Draft:** 4' 10" (1.47mm)

## Speed, Capacities and Weight

---

**Max Speed:** 25 Knots Kts. (29 MPH)

**Water Capacity:** 500 Gallons

**Holding Tank:** 175 Gal Gallons

**Fuel Capacity:** 3000 Gal Gallons

## Accommodations

---

**Total Cabins:** 4

**Total Heads:** 3

---

## Hull and Deck Information

---

**Hull Material:** Composite

**Exterior Designer:** Marlow Yachts

**Interior Designer:** Marlow Design  
Team

---

## Engine Information

---

**Engines:** 2

**Manufacturer:** Caterpillar

**Engine Type:** Inboard

**Fuel Type:** Diesel

# PHOTOS

**Starboard Side**



**Starboard Side**



**Bow**



**Nautical Nut**



**Nautical Nut**



**Portside**



**Portside**



**Aft Deck**



**Aft Deck facing Forward**



**Aft Deck facing Portside**



**Salon Interior**



**Salon facing Aft**





**Salon facing Starboard**



**Salon Portside Bar with Stairs**



**Galley**



**Dining Area**



**Mini Helm Station**



**MSR facing Aft**



**Master**



**MSR facing Portside**



**MSR Vainty**



**MRS Head**



**Companionway**



**VIP facing Forward**



**Guest Head**



**Starboard Guestroom**



**Portside Guestroom**



**Portside Guest Head**



**Commandbridge facing Forward**



**Commandbridge facing Forward  
Portside**



**Commandbridge Helm**



**Commandbridge Helm**



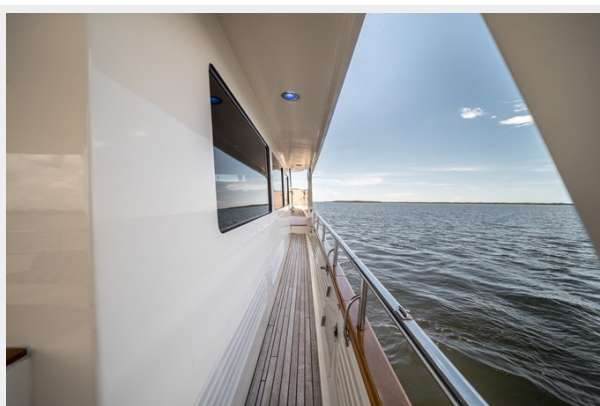
**Bow facing Aft**



**Bow**



**Nautical Nut Exterior**



**Marlow Explorer**



**Upper Aft Deck facing Portside**



**Upper Aft Deck**



**Upper Aft Deck Grill**



**Tender**



**Crew Quarters**



**Crew Quarters**



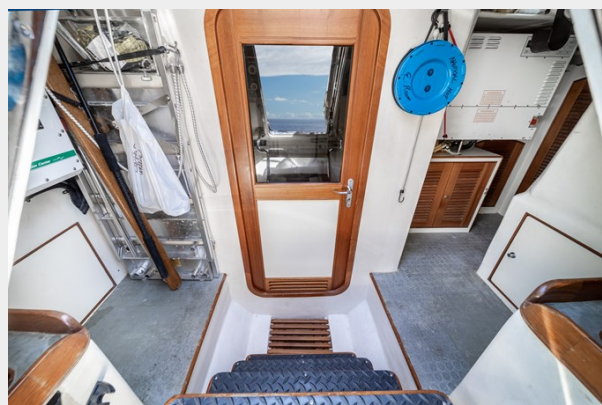
**Crew Head**



**Lazarette**



**Lazarette**



**Engine Room**



**Starboard Engine**



**Portside Engine**



## Nautical Nut Aerial



## Nautical Nut Running



# CONTACTS

---

Andrey Shestakov, leading yacht broker of the sales department of Shestakov Yacht Sales Inc. Shestakov Yacht Sales Inc., the official representative of the Miami/Fort Lauderdale FL headquarters.

## Contact details

---

Email: **andrey@shestakovyachtsales.com**

Web: [shestakovyachtsales.com/en/](http://shestakovyachtsales.com/en/)

## Telephones

---

USA: **+1(954)274-4435**

## Office hours

---

Monday – Saturday: **9:00 - 21:00** EDT

Sunday: **closed**

## Address

---



Harbour Towne Marina, 850 NE 3rd St, STE 213, Dania, FL 33004