

NO NAME — MARLOW



Builder: MARLOW

Year Built: 2008

Model: Trawler Yacht

Price: PRICE ON APPLICATION

LOA: 74' 10" (22.81mm)

Beam: 18.33

Max Draft: 4' 5" (1.35mm)

Our experienced yacht broker, Andrey Shestakov, will help you choose and buy a yacht that best suits your needs **NO NAME — MARLOW** from our catalogue. Presently, at **Shestakov Yacht Sales Inc.**, we have a wide variety of yachts available on our sale's list. We also work in close contact with all the big **yacht manufacturers** from all over the world.

If you would like to buy a yacht **NO NAME — MARLOW** or would like help answering any questions concerning purchasing, selling or chartering a yacht, please call **+1(954)274-4435**

TABLE OF CONTENTS

TABLE OF CONTENTS	2
SPECIFICATIONS	3
Overview	3
Basic Information	3
Dimensions	3
Speed, Capacities and Weight	3
Accommodations	4
Hull and Deck Information	4
Engine Information	4
PHOTOS	5
CONTACTS	18
Contact details	18
Telephones	18
Office hours	18
Address	18

SPECIFICATIONS

Overview

Marlow's good reputation is of building boats using state of the art construction techniques, which includes the use of Kevlar, mod. epoxy resin, and high density foam coring. Marlow's are stronger and weigh less than your conventional trawlers. This carries over into the interior with honey comb and structural foam in counters and cabinets. The 70's hull offers Marlow's twin strut keel underbody. The 70 can sip fuel for extended range cruising or get up and go if you need to out run a storm.

The 70 Command Bridge offers a large salon and galley/dinette areas on the main deck. Her full beam master is spacious and with lots of storage and dual heads. The enclosed flybridge is a great place to run the boat with a large seating area behind the helm. All in all this boat can take you and your family on extended cruising trips in safety and comfort.

Basic Information

Category: Trawler Yacht

Model Year: 2008

Year Built: 2008

Dimensions

LOA: 74' 10" (22.81mm)

Beam: 18.33

Max Draft: 4' 5" (1.35mm)

Speed, Capacities and Weight

Cruise Speed Range: 1800

Water Capacity: 400 Gallons

Holding Tank: 150 Gal Gallons

Fuel Capacity: 1800 Gal Gallons

Accommodations

Total Cabins: 4

Total Heads: 3

Hull and Deck Information

Hull Material: Fiberglass

Engine Information

Engines: 2

Manufacturer: Caterpillar

Engine Type: Inboard

Fuel Type: Diesel

PHOTOS





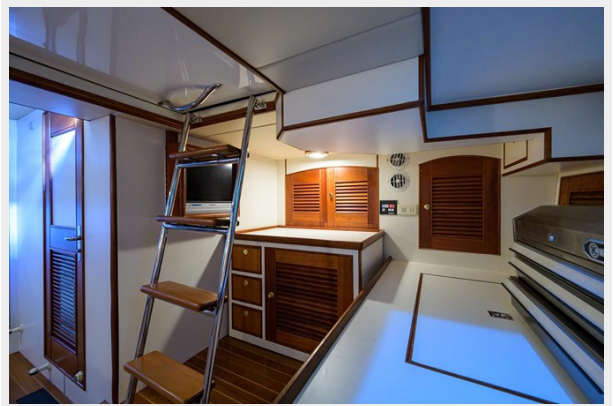


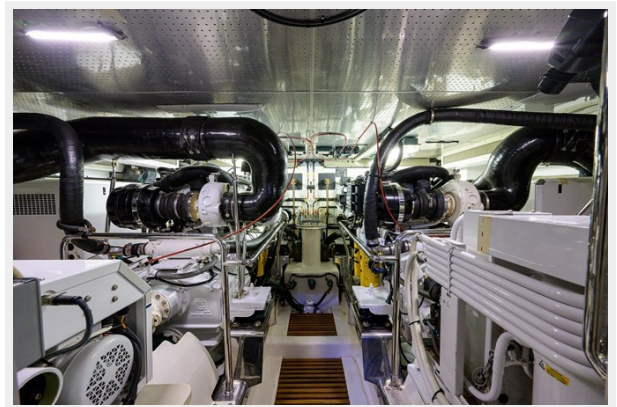
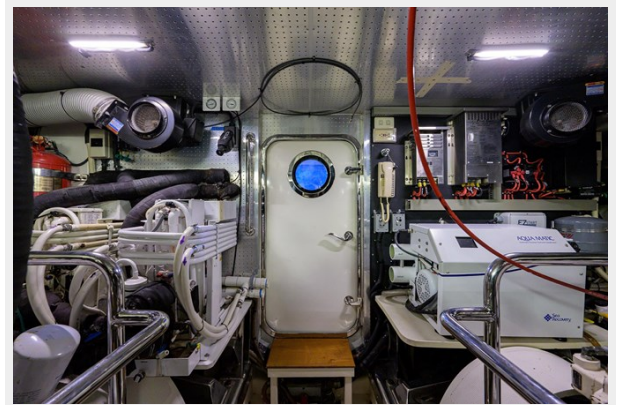


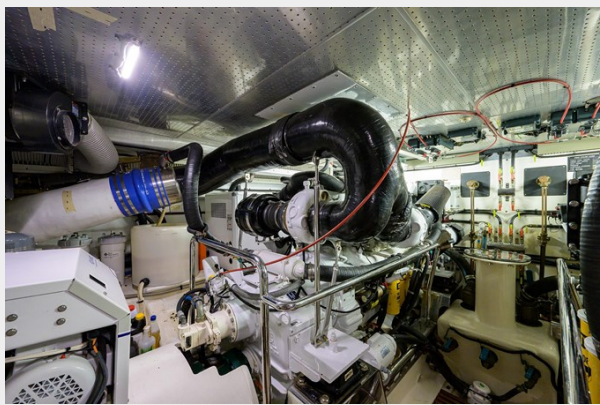
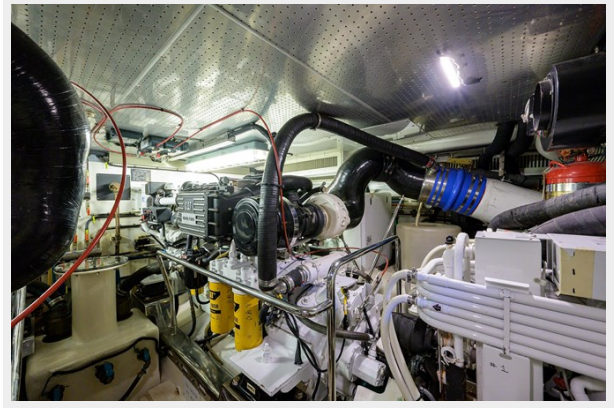
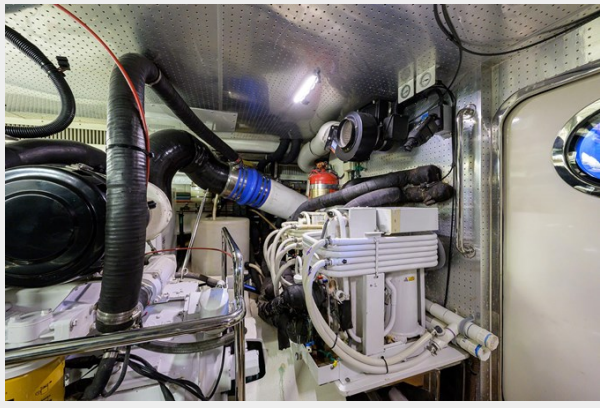


















CONTACTS

Andrey Shestakov, leading yacht broker of the sales department of Shestakov Yacht Sales Inc. Shestakov Yacht Sales Inc., the official representative of the Miami/Fort Lauderdale FL headquarters.

Contact details

Email: **andrey@shestakovyachtsales.com**

Web: shestakovyachtsales.com/en/

Telephones

USA: **+1(954)274-4435**

Office hours

Monday – Saturday: **9:00 - 21:00** EDT

Sunday: **closed**

Address



Harbour Towne Marina, 850 NE 3rd St, STE 213, Dania, FL 33004