

SAPHIA — PERSHING



Builder: PERSHING

Year Built: 2013

Model: Motor Yacht

Price: PRICE ON APPLICATION

Location: United States

LOA: 64' (19.51mm)

Beam: 16.41

Max Draft: 4' 4" (1.32mm)

Cruise Speed: 31.28 Knots Kts. (36 MPH)

Max Speed: 39.1 Knots Kts. (45 MPH)

Our experienced yacht broker, Andrey Shestakov, will help you choose and buy a yacht that best suits your needs **SAPHIA — PERSHING** from our catalogue. Presently, at Shestakov Yacht Sales Inc., we have a wide variety of yachts available on our sale's list. We also work in close contact with all the big yacht manufacturers from all over the world.

If you would like to buy a yacht **SAPHIA — PERSHING** or would like help answering any questions concerning purchasing, selling or chartering a yacht, please call **+1(954)274-4435**

TABLE OF CONTENTS

TABLE OF CONTENTS	2
SPECIFICATIONS	3
Overview	3
Basic Information	3
Dimensions	3
Speed, Capacities and Weight	3
Accommodations	4
Hull and Deck Information	4
Engine Information	4
PHOTOS	5
CONTACTS	11
Contact details	11
Telephones	11
Office hours	11
Address	11

SPECIFICATIONS

Overview

Saphia is the finest example of Italian styling and performance. She's powered by MTU 10v 2000s with 1623hp. She has a cruise speed of 36 knots with top speeds upwards of 40 knots.

Saphia is a three stateroom/three head layout. The full-beam master is amidship and features a centerline queen birth. To port is lounge-style seating with a wardrobe locker just forward. Adjacent to starboard is storage and a popup vanity.

The VIP Stateroom has an island queen birth with an ensuite. The second guest stateroom has two single berths with a jack and jill that acts as the day head.

Her main salon is flooded with natural lighting with large windows to starboard and port. Just above the helm is a large retractable sunroof. Aft is a sliding door and window that drops hydraulically, allowing the interior and exterior space to become one. A U-shape sectional is to starboard that wraps around an expandable hi-low table. Adjacent to port is a long cabinet that houses her entertainment center and a mini-fridge. Continuing forward to port is an L-shape lounge-style seating area, with an ice-maker below.

The Cockpit features a large L-shape alfresco dinette to starboard. Adjacent to port is a grill and wet bar. Below the dinette seating is access to the crew quarters. Centerline aft is a large sun pad with room for three.

Basic Information

Category: Motor Yacht

Model Year: 2013

Year Built: 2013

Country: United States

Dimensions

LOA: 64' (19.51mm)

Beam: 16.41

Max Draft: 4' 4" (1.32mm)

Speed, Capacities and Weight

Cruise Speed: 31.28 Knots Kts. (36 MPH) **Max Speed:** 39.1 Knots Kts. (45 MPH)

Accommodations

Total Cabins: 3

Total Heads: 3

Hull and Deck Information

Hull Material: Fiberglass

Engine Information

Engines: 2

Manufacturer: MTU

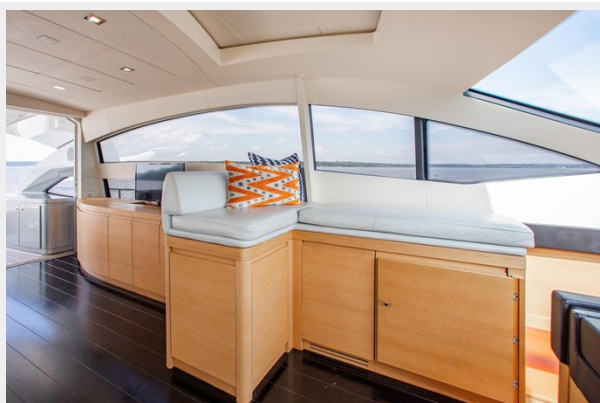
Engine Type: Inboard

Fuel Type: Diesel

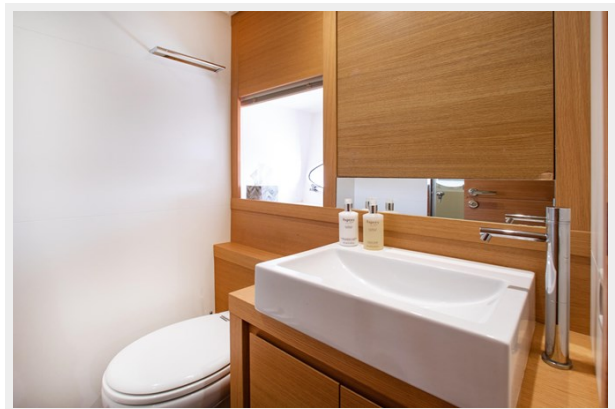
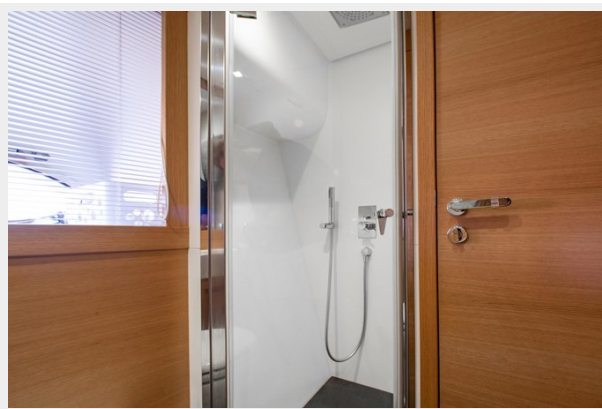
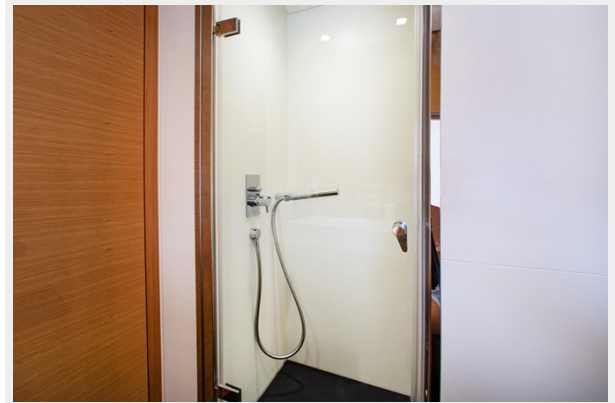
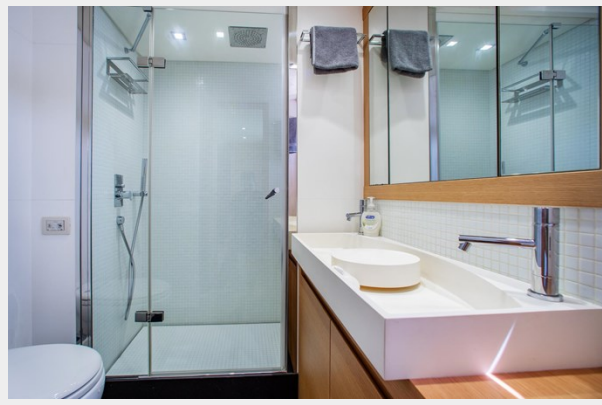
PHOTOS













CONTACTS

Andrey Shestakov, leading yacht broker of the sales department of Shestakov Yacht Sales Inc. Shestakov Yacht Sales Inc., the official representative of the Miami/Fort Lauderdale FL headquarters.

Contact details

Email: andrey@shestakovyachtsales.com

Web: shestakovyachtsales.com/en/

Telephones

USA: +1(954)274-4435

Office hours

Monday – Saturday: **9:00 - 21:00** EDT

Sunday: **closed**

Address



Harbour Towne Marina, 850 NE 3rd St,
STE 213, Dania, FL 33004