

LITTLE ZOE — OVERMARINE GROUP



Builder: OVERMARINE GROUP

Year Built: 2005

Model: Motor Yacht

Price: PRICE ON APPLICATION

LOA: 92' 11" (28.3mm)

Beam: 21.65

Min Draft: 4' (1.2mm)

Max Draft: 5' 11" (1.8mm)

Cruise Speed: 22 Knots Kts. (25 MPH)

Max Speed: 32 Knots Kts. (37 MPH)

Our experienced yacht broker, Andrey Shestakov, will help you choose and buy a yacht that best suits your needs **LITTLE ZOE — OVERMARINE GROUP** from our catalogue. Presently, at Shestakov Yacht Sales Inc., we have a wide variety of yachts available on our sale's list. We also work in close contact with all the big yacht manufacturers from all over the world.

If you would like to buy a yacht **LITTLE ZOE — OVERMARINE GROUP** or would like help answering any questions concerning purchasing, selling or chartering a yacht, please call **+1(954)274-4435**

TABLE OF CONTENTS

TABLE OF CONTENTS	2
SPECIFICATIONS	4
Overview	4
Basic Information	4
Dimensions	4
Speed, Capacities and Weight	5
Accommodations	5
Hull and Deck Information	5
Engine Information	5
PHOTOS	6
Little Zoe - Aft Deck Sunpad	6
Little Zoe - Aft cushions new 2021	6
Little Zoe - Main Salon with partition	6
Little Zoe - Main Salon Bar	6
Little Zoe - Main Dining	6
Little Zoe - Main Salon Opening roof	6
Little Zoe - Main Salon Dining with Partition	7
Little Zoe - Master Cabin	7
Little Zoe - Master Cabin Office / make up	7
Little Zoe - Master Cabin Sofa	7
Little Zoe - Master Cabin Ensuite	7
Little Zoe - Vip Cabin	7
Little Zoe - Vip Cabin ensuite	8
Little Zoe - Vip Cabin	8
Little Zoe - Twin Cabin Starboard	8
Little Zoe - Twin Cabin Port	8
Little Zoe - Wheel House	8
Little Zoe - Wheel House Kamewa	8

Little Zoe - Engine Room	9
Little Zoe - Engine Room Starboard Engine	9
Little Zoe - Transom *Name Not Included*	9
Little Zoe -	9
Little Zoe - Cruising	9
Little Zoe - Cruising Top Speed	9
Little Zoe - Nose	10
Little Zoe - Chase Boat to LADY MOURA	10
Little Zoe - Radar Arch	10
Little Zoe - Port Side Gel Coat shine	10
Little Zoe - Port Side teak	10
Little Zoe - Starboard Teak & Gel Coat shine	10
Little Zoe - Gel Coat Shine & New Upholstery	11
Little Zoe - Port Side Superstructure gel coat	11
Little Zoe - Aft Deck	11
Little Zoe - Aft Sunpad (2021 soft fabrics)	11
Little Zoe - Aft Sunpad (2021 soft fabrics)	11
CONTACTS	12
Contact details	12
Telephones	12
Office hours	12
Address	12

SPECIFICATIONS

Overview

Built in 2005, this Mangusta 92 Open series has been kept in strict private use until 2020 when she first appeared on the charter market and has successfully completed back to back bookings since.

Previously kept as a chase boat to a larger yacht, the interior is practically void of any wear and tear to be expected from a vessel this age thanks to hardly ever having been slept in. The exterior is washed down very regularly and carefully, avoiding abrasive cleaning products and the hull is polished annually with wax top up monthly. Today, she is a very successful charter vessel attracting families and long term charter bookings. The vessel has had exceptional maintenance such as the 10 year major Kamewa jet overhaul performed in 2017; top end overhaul of the main engines in 2018; hull sandblasted and fuel tanks deep clean in 2018; swim platform recaulked 2021 etc. Full maintenance list is available.

Not only is the vessel's condition extraordinary and ready for another season, the layout allows for guest cabins to enjoy the quietest part of the vessel forward, far away from the engine room its vibrations and sound on the contrary of most sisterships. The interior is fully optimized to receive up to 10 guests in 4 cabins each with ensuite bathrooms.

Basic Information

Category: Motor Yacht

Sub Category: Motor Yacht

Model Year: 2005

Year Built: 2005

Refit Type: Soft

Dimensions

LOA: 92' 11" (28.3mm)

LWL: 76' 2" (23.2mm)

Beam: 21.65

Min Draft: 4' (1.2mm)

Max Draft: 5' 11" (1.8mm)

Speed, Capacities and Weight

Cruise Speed: 22 Knots Kts. (25 MPH)

Cruise Speed Range: 300

Max Speed: 32 Knots Kts. (37 MPH)

Gross Tonnage: 130 Pounds

Water Capacity: 1400 Gallons

Holding Tank: 29.06 Gal Gallons

Fuel Capacity: 1849.2 Gal Gallons

Fuel Consumption: 147.94 Gal Gallons

Accommodations

Total Cabins: 4

Total Berths: 8

Sleeps: 10

Total Heads: 4

Crew Cabin: 4

Crew Berths: 4

Crew Heads: 2

Hull and Deck Information

Hull Material: GRP

Deck Material: Teak

Hull Configuration: Planing

Hull Color: White

Hull Designer: Overmarine

Exterior Designer: Overmarine

Interior Designer: Overmarine / Owner

Engine Information

Engines: 4

Manufacturer: MTU

Engine Type: Inboard

Fuel Type: Diesel

PHOTOS

Little Zoe - Aft Deck Sunpad



Little Zoe - Aft cushions new 2021



Little Zoe - Main Salon with partition



Little Zoe - Main Salon Bar



Little Zoe - Main Salon Opening roof



Little Zoe - Main Dining



Little Zoe - Main Salon Dining with Partition



Little Zoe - Master Cabin



Little Zoe - Master Cabin Sofa



Little Zoe - Master Cabin Office / make up



Little Zoe - Master Cabin Ensuite



Little Zoe - Vip Cabin



Little Zoe - Vip Cabin



Little Zoe - Vip Cabin ensuite



Little Zoe - Twin Cabin Port



Little Zoe - Twin Cabin Starboard



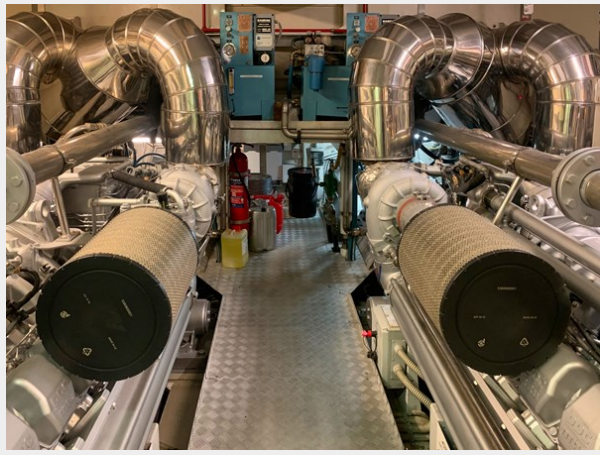
Little Zoe - Wheel House



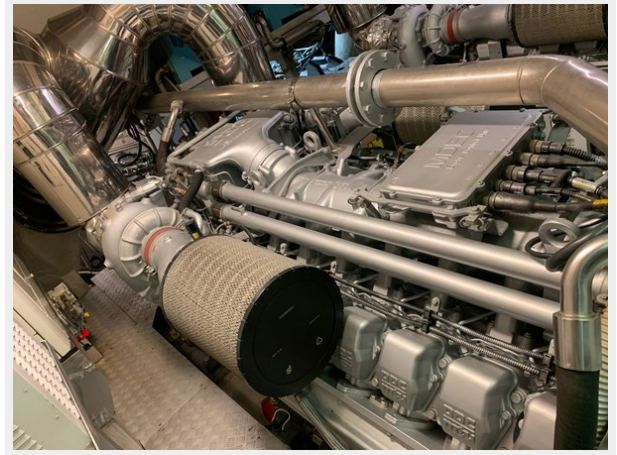
Little Zoe - Wheel House Kamewa



Little Zoe - Engine Room



Little Zoe - Engine Room Starboard Engine



Little Zoe -



Little Zoe - Transom *Name Not Included*



Little Zoe - Cruising



Little Zoe - Cruising Top Speed



Little Zoe - Chase Boat to LADY MOURA



Little Zoe - Nose



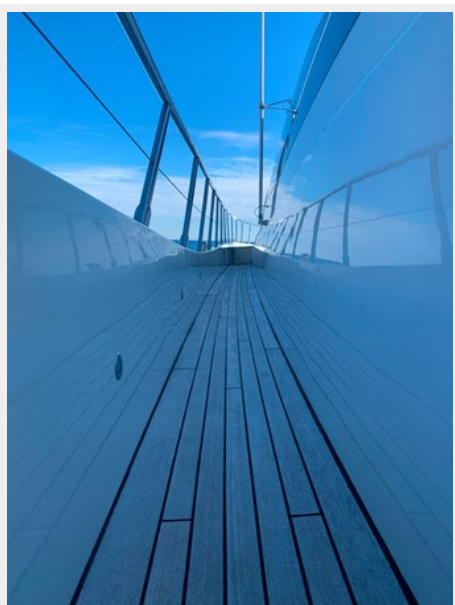
Little Zoe - Radar Arch



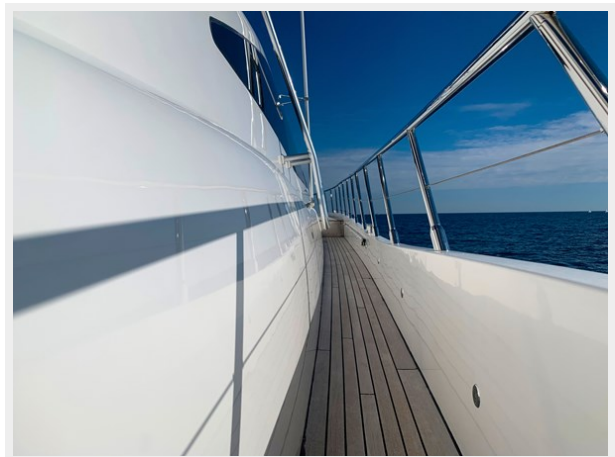
Little Zoe - Port Side Gel Coat shine



Little Zoe - Port Side teak



Little Zoe - Starboard Teak & Gel Coat shine



Little Zoe - Port Side Superstructure gel coat



Little Zoe - Gel Coat Shine & New Upholstery



Little Zoe - Aft Deck



Little Zoe - Aft Sunpad (2021 soft fabrics)



Little Zoe - Aft Sunpad (2021 soft fabrics)



CONTACTS

Andrey Shestakov, leading yacht broker of the sales department of Shestakov Yacht Sales Inc. Shestakov Yacht Sales Inc., the official representative of the Miami/Fort Lauderdale FL headquarters.

Contact details

Email: andrey@shestakovyachtsales.com

Web: shestakovyachtsales.com/en/

Telephones

USA: +1(954)274-4435

Office hours

Monday – Saturday: **9:00 - 21:00** EDT

Sunday: **closed**

Address



Harbour Towne Marina, 850 NE 3rd St,
STE 213, Dania, FL 33004