

A POUR EXCUSE — SEA RAY



Builder: SEA RAY

Year Built: 2000

Model: Cruising Yacht

Price: PRICE ON APPLICATION

Location: United States

LOA: 41' (12.5mm)

Beam: 13.83

Max Draft: 3' 4" (1.02mm)

Our experienced yacht broker, Andrey Shestakov, will help you choose and buy a yacht that best suits your needs **A Pour Excuse — SEA RAY** from **our catalogue**. Presently, at **Shestakov Yacht Sales Inc.**, we have a wide variety of yachts available on **our sale's list**. We also work in close contact with all the big **yacht manufacturers** from all over the world.

If you would like to buy a yacht **A Pour Excuse — SEA RAY** or would like help answering any questions concerning purchasing, selling or chartering a yacht, please call **+1(954)274-4435**

TABLE OF CONTENTS

TABLE OF CONTENTS	2
SPECIFICATIONS	5
Overview	5
Basic Information	5
Dimensions	5
Speed, Capacities and Weight	5
Accommodations	5
Hull and Deck Information	6
Engine Information	6
PHOTOS	7
8018622_20211102104828870_1_XLARGE	7
8018622_20211102104824650_1_XLARGE	7
8018622_20211102104838212_1_XLARGE	7
8018622_20211102104846856_1_XLARGE	7
8018622_20211102104842046_1_XLARGE	7
8018622_20211102105226789_1_XLARGE	7
8018622_20211102105203849_1_XLARGE	8
8018622_20211102105215848_1_XLARGE	8
8018622_20211102105219404_1_XLARGE	8
8018622_20211102105211492_1_XLARGE	8
8018622_20211102105207544_1_XLARGE	8
8018622_20211102105222695_1_XLARGE	8
8018622_20210903102910804_1_XLARGE	9
8018622_20210903102939772_1_XLARGE	9
8018622_20210903103008704_1_XLARGE	9
8018622_20210903103011557_1_XLARGE	9
8018622_20210903103019697_1_XLARGE	9
8018622_20210903103026584_1_XLARGE	9

8018622_20210903103030898_1_XLARGE	10
8018622_20210903103034969_1_XLARGE	10
8018622_20210903103023651_1_XLARGE	10
8018622_20210903103038686_1_XLARGE	10
8018622_20210903103041907_1_XLARGE	10
8018622_20210903103045551_1_XLARGE	10
8018622_20210903103053946_1_XLARGE	11
8018622_20210903103058072_1_XLARGE	11
8018622_20210903103101076_1_XLARGE	11
8018622_20210903103105246_1_XLARGE	11
8018622_20210903103119202_1_XLARGE	11
8018622_20210903103116247_1_XLARGE	11
8018622_20210903103123387_1_XLARGE	12
8018622_20210903103133579_1_XLARGE	12
8018622_20210903103141378_1_XLARGE	12
8018622_20210903103137742_1_XLARGE	12
8018622_20210903103130029_1_XLARGE	12
8018622_20210903103127034_1_XLARGE	12
8018622_20210903103112197_1_XLARGE	13
8018622_20210903103144456_1_XLARGE	13
8018622_20210903103148620_1_XLARGE	13
8018622_20210903103154561_1_XLARGE	13
8018622_20210903103158573_1_XLARGE	13
8018622_20210903103205779_1_XLARGE	13
8018622_20210903103151565_1_XLARGE	14
8018622_20210903103201966_1_XLARGE	14
8018622_20210903103209773_1_XLARGE	14
8018622_20210903103213566_1_XLARGE	14
8018622_20210903103216950_1_XLARGE	14

8018622_20210903103224061_1_XLARGE	14
8018622_20210903103221093_1_XLARGE	15
8018622_20210903103228062_1_XLARGE	15
8018622_20210903103235064_1_XLARGE	15
8018622_20210903103231071_1_XLARGE	15
8018622_20210903103241756_1_XLARGE	15
8018622_20210903103238250_1_XLARGE	15
8018622_20210903103245450_1_XLARGE	16
8018622_20210903103249461_1_XLARGE	16
8018622_20210903103253271_1_XLARGE	16
8018622_20210903103308514_1_XLARGE	16
8018622_20210903103301018_1_XLARGE	16
8018622_20210903103304698_1_XLARGE	16
8018622_20210903102920829_1_XLARGE	17
8018622_20210903103257027_1_XLARGE	17
8018622_20211102104851724_1_XLARGE	17
CONTACTS	18
Contact details	18
Telephones	18
Office hours	18
Address	18

SPECIFICATIONS

Overview

2000 Sea Ray 410 Sundancer a Well Balanced Express cruiser, Powered by Twin V-Drive 3116 Caterpillar Diesels at 350hp.

This is one of the better designed Sea Rays of the 2000s, Open-One Level Salon, Galley, and Stateroom. Huge Cockpit and well-designed helm with all items at your fingertips and 360 view while underway. Access to the Foredeck is simple with port and starboard Access, well placed safety rails, and recessed gunwale with toe rail for great footing while on deck.

Starboard Engine has been Replaced with 5 hours currently and a little over 1,910hours on the port. She has been an island hopper for years with a 7.6kw Generator for extended trips. Don't miss this one.

Basic Information

Category: Cruising Yacht

Sub Category: Express

Model Year: 2000

Year Built: 2000

Country: United States

Dimensions

LOA: 41' (12.5mm)

Beam: 13.83

Max Draft: 3' 4" (1.02mm)

Speed, Capacities and Weight

Water Capacity: 100 Gallons

Holding Tank: 42 Gal Gallons

Fuel Capacity: 335 Gal Gallons

Accommodations

Total Cabins: 2

Hull and Deck Information

Hull Material: Fiberglass

Engine Information

Engines: 2

Manufacturer: Caterpillar

Fuel Type: Diesel

PHOTOS

8018622_20211102104828870_1_XLARGE 8018622_20211102104824650_1_XLARGE



8018622_20211102104838212_1_XLARGE 8018622_20211102104846856_1_XLARGE



8018622_20211102104842046_1_XLARGE 8018622_20211102105226789_1_XLARGE



8018622_20211102105203849_1_XLARGE 8018622_20211102105215848_1_XLARGE



8018622_20211102105219404_1_XLARGE 8018622_20211102105211492_1_XLARGE



8018622_20211102105207544_1_XLARGE 8018622_20211102105222695_1_XLARGE



8018622_20210903102910804_1_XLARGE 8018622_20210903102939772_1_XLARGE



8018622_20210903103008704_1_XLARGE 8018622_20210903103011557_1_XLARGE



8018622_20210903103019697_1_XLARGE 8018622_20210903103026584_1_XLARGE



8018622_20210903103030898_1_XLARGE 8018622_20210903103034969_1_XLARGE



8018622_20210903103023651_1_XLARGE 8018622_20210903103038686_1_XLARGE



8018622_20210903103041907_1_XLARGE 8018622_20210903103045551_1_XLARGE



8018622_20210903103053946_1_XLARGE 8018622_20210903103058072_1_XLARGE



8018622_20210903103101076_1_XLARGE 8018622_20210903103105246_1_XLARGE



8018622_20210903103119202_1_XLARGE 8018622_20210903103116247_1_XLARGE



8018622_20210903103123387_1_XLARGE 8018622_20210903103133579_1_XLARGE



8018622_20210903103141378_1_XLARGE 8018622_20210903103137742_1_XLARGE



8018622_20210903103130029_1_XLARGE 8018622_20210903103127034_1_XLARGE



8018622_20210903103112197_1_XLARGE 8018622_20210903103144456_1_XLARGE



8018622_20210903103148620_1_XLARGE 8018622_20210903103154561_1_XLARGE



8018622_20210903103158573_1_XLARGE 8018622_20210903103205779_1_XLARGE



8018622_20210903103151565_1_XLARGE 8018622_20210903103201966_1_XLARGE



8018622_20210903103209773_1_XLARGE 8018622_20210903103213566_1_XLARGE



8018622_20210903103216950_1_XLARGE 8018622_20210903103224061_1_XLARGE



8018622_20210903103221093_1_XLARGE 8018622_20210903103228062_1_XLARGE



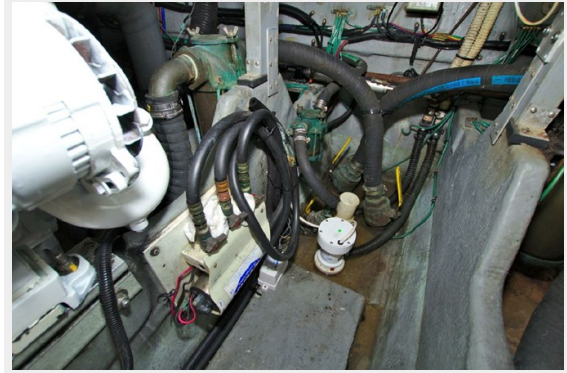
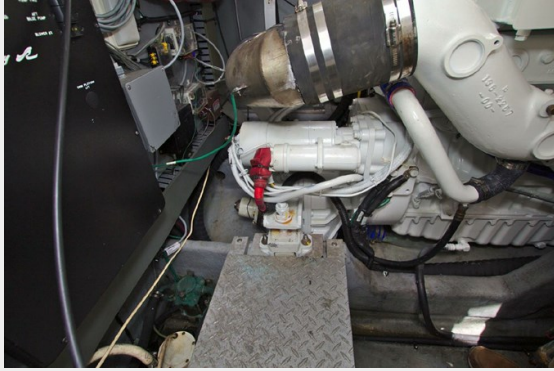
8018622_20210903103235064_1_XLARGE 8018622_20210903103231071_1_XLARGE



8018622_20210903103241756_1_XLARGE 8018622_20210903103238250_1_XLARGE



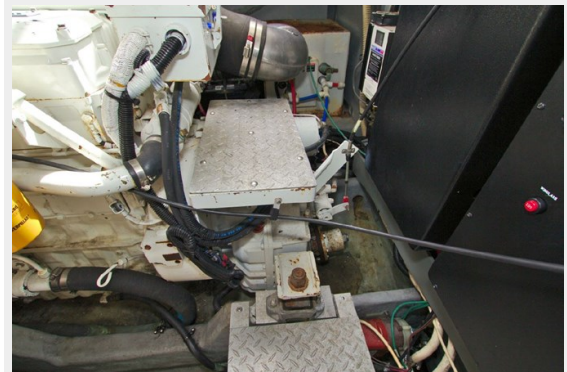
8018622_20210903103245450_1_XLARGE 8018622_20210903103249461_1_XLARGE



8018622_20210903103253271_1_XLARGE 8018622_20210903103308514_1_XLARGE



8018622_20210903103301018_1_XLARGE 8018622_20210903103304698_1_XLARGE



8018622_20210903103257027_1_XLARGE 8018622_20210903102920829_1_XLARGE



8018622_20211102104851724_1_XLARGE



CONTACTS

Andrey Shestakov, leading yacht broker of the sales department of Shestakov Yacht Sales Inc. Shestakov Yacht Sales Inc., the official representative of the Miami/Fort Lauderdale FL headquarters.

Contact details

Email: **andrey@shestakovyachtsales.com**

Web: shestakovyachtsales.com/en/

Telephones

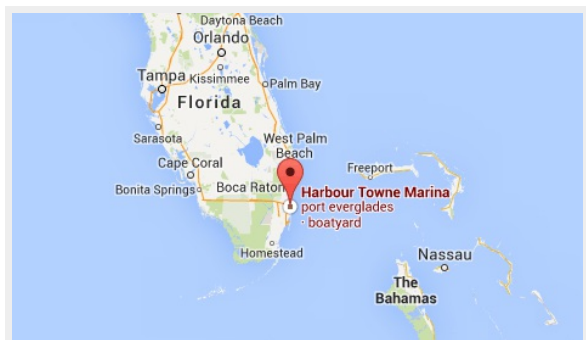
USA: **+1(954)274-4435**

Office hours

Monday – Saturday: **9:00 - 21:00** EDT

Sunday: **closed**

Address



Harbour Towne Marina, 850 NE 3rd St, STE 213, Dania, FL 33004