

TARGA 46 — TARGA



Builder: TARGA

Year Built: 2019

Model: Sport Fisherman

Price: PRICE ON APPLICATION

Location: Hong Kong

LOA: 49' 7" (15.11mm)

Beam: 12.95

Min Draft: 3' 8" (1.1mm)

Cruise Speed: 25 Knots Kts. (29 MPH)

Max Speed: 36 Knots Kts. (41 MPH)

Our experienced yacht broker, Andrey Shestakov, will help you choose and buy a yacht that best suits your needs **TARGA 46 — TARGA** from our catalogue. Presently, at Shestakov Yacht Sales Inc., we have a wide variety of yachts available on our sale's list. We also work in close contact with all the big yacht manufacturers from all over the world.

If you would like to buy a yacht **TARGA 46 — TARGA** or would like help answering any questions concerning purchasing, selling or chartering a yacht, please call **+1(954)274-4435**

TABLE OF CONTENTS

TABLE OF CONTENTS	2
SPECIFICATIONS	4
Overview	4
Basic Information	4
Dimensions	4
Speed, Capacities and Weight	4
Accommodations	4
Hull and Deck Information	5
Engine Information	5
PHOTOS	6
Main Saloon	6
Dinette	6
Galley	6
Helm Station	6
Forward Master	7
Forward Head	7
Forward Single	7
Aft Cabin	8
Aft Head	8
Fore Deck	8
Bow	8
Aft Cockpit	8
Swim Platform	8
Aft Entrance	9
Coach Roof	9
Top Deck Helm Station	9
Volvo Main Engines	10
Fischer Panda Generator	10

Engine Room	10
Seakeeper Stabilizer	10
CONTACTS	11
Contact details	11
Telephones	11
Office hours	11
Address	11

SPECIFICATIONS

Overview

N/A

Basic Information

Category: Sport Fisherman

Model Year: 2019

Year Built: 2019

Country: Hong Kong

Dimensions

LOA: 49' 7" (15.11mm)

Beam: 12.95

Min Draft: 3' 8" (1.1mm)

Speed, Capacities and Weight

Cruise Speed: 25 Knots Kts. (29 MPH)

Max Speed: 36 Knots Kts. (41 MPH)

Water Capacity: 350 Gallons

Holding Tank: 31.7 Gal Gallons

Fuel Capacity: 396.26 Gal Gallons

Accommodations

Total Cabins: 2

Total Berths: 4

Sleeps: 6

Total Heads: 2

Hull and Deck Information

Hull Material: GRP

Deck Material: GRP

Hull Configuration: Deep Vee

Hull Color: Navy

Engine Information

Engines: 2

Manufacturer: Volvo

Engine Type: Inboard

Fuel Type: Diesel

PHOTOS

Main Saloon



Dinette



Galley



Helm Station



Forward Master



Forward Head



Forward Single



Aft Cabin



Aft Head



Fore Deck



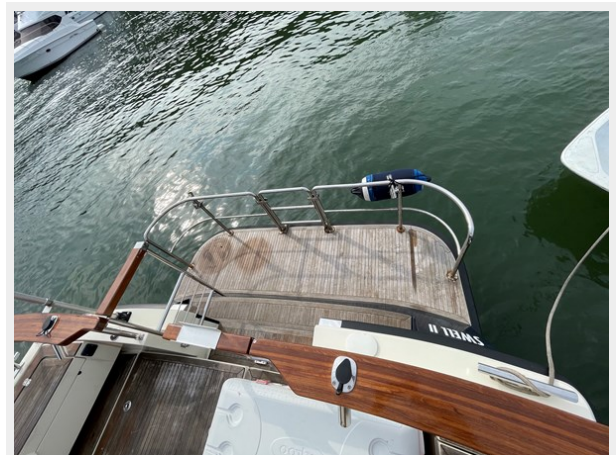
Bow



Aft Cockpit



Swim Platform



Aft Entrance



Coach Roof



Top Deck Helm Station



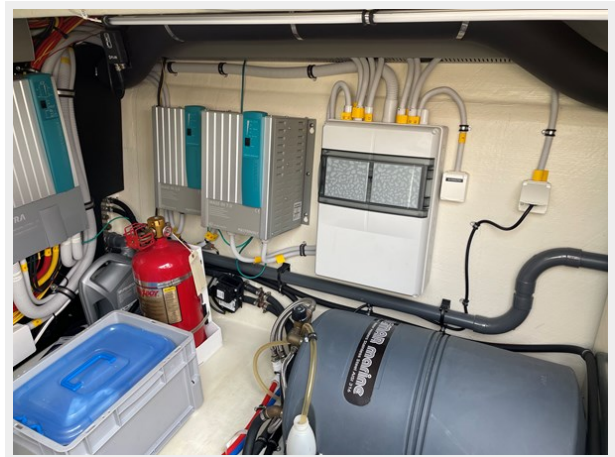
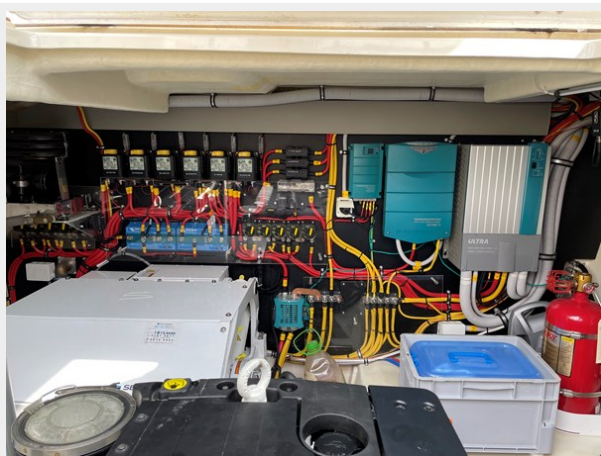
Volvo Main Engines



Fischer Panda Generator



Engine Room



Seakeeper Stabilizer



CONTACTS

Andrey Shestakov, leading yacht broker of the sales department of Shestakov Yacht Sales Inc. Shestakov Yacht Sales Inc., the official representative of the Miami/Fort Lauderdale FL headquarters.

Contact details

Email: andrey@shestakovyachtsales.com

Web: shestakovyachtsales.com/en/

Telephones

USA: +1(954)274-4435

Office hours

Monday – Saturday: **9:00 - 21:00** EDT

Sunday: **closed**

Address



Harbour Towne Marina, 850 NE 3rd St,
STE 213, Dania, FL 33004