

EMERSON — LITTLE HARBOR



Builder: LITTLE HARBOR

Year Built: 2000

Model: Cruising Yacht

Price: PRICE ON APPLICATION

Location: United States

LOA: 34' (10.36mm)

Beam: 12.41

Max Draft: 2' (0.61mm)

Cruise Speed: 25 Knots Kts. (29 MPH)

Max Speed: 30 Knots Kts. (35 MPH)

Our experienced yacht broker, Andrey Shestakov, will help you choose and buy a yacht that best suits your needs **Emerson — LITTLE HARBOR** from our catalogue. Presently, at Shestakov Yacht Sales Inc., we have a wide variety of yachts available on our sale's list. We also work in close contact with all the big yacht manufacturers from all over the world.

If you would like to buy a yacht **Emerson — LITTLE HARBOR** or would like help answering any questions concerning purchasing, selling or chartering a yacht, please call **+1(954)274-4435**

TABLE OF CONTENTS

TABLE OF CONTENTS	2
SPECIFICATIONS	6
Overview	6
Basic Information	6
Dimensions	6
Speed, Capacities and Weight	6
Accommodations	7
Hull and Deck Information	7
Engine Information	7
PHOTOS	8
1- First Shot	8
2- side	8
3- head on	8
4- Stbd side	8
5- Stbd advanced	9
6- Stbd quarter	9
7- port quarter	9
8- Stbd side view	9
9- port side	9
10- stern	9
11- cockpit	10
12-	10
13- cockpit	10
14-	10
16- Stbd side	10
15- cockpit	10
17- port side	11
18- head on	11

19- p side bow	11
20- s side bow	11
21- windlass	12
22- anchor	12
23- foot controls	12
24- close Stbd	12
25- close port	12
25.1-	12
25.2-	13
25.3	13
26- rear	13
27- rear	13
28- rear	13
29- helm	13
30- helm	14
31- helm	14
33- helm	14
32- helm	14
34- helm	14
35- helm	14
36- helm	15
37- helm	15
38-	15
39-	15
40-	15
41-	15
43-	16
42-	16
45-	16

44-	16
46-	17
47-	17
49-	17
48-	17
50-	18
51-	18
52- head last	18
53- galley	18
55-	19
54-	19
56-	19
57-	19
58- salon	20
59-	20
60-	20
61-	20
62-	20
63-	20
64-	21
65-	21
66-	21
67-	21
68- engine room	21
69-	21
71-	22
70-	22
72-	22
73-	22

75-	23
74-	23
76- engine	23
77- engine room	23
78-	24
79- drives	24
80-	24
81-	24
82-	25
83- generator	25
84- Gen	25
85- exhaust	25
86- drives	25
87- drives	25
88- Drive Final	26
CONTACTS	27
Contact details	27
Telephones	27
Office hours	27
Address	27

SPECIFICATIONS

Overview

Built at Little Harbor the year Bain-Willard acquired the company, along with Hinckley Yacht Co, this Little Harbor 34 has been babied since new. Serviced its first 3 seasons by Hinckley, it has been boathouse kept since 2004, and serviced singularly by its meticulous owner at a local yard on the Eastern Shore of Virginia. Powered by low-hour Yanmars, this boat has a full array of cruising instruments and has the pleasure of two reverse cycle air conditioners to cool the boat down below decks, and in the cockpit. With very maneuverable jet drives, a shallow draft, and a command view from the helm, this boat is capable of doing it all. The boat is a great weekender, long-term cruiser, or with its wide side decks, easily Great Loop capable. Conveyed with the sale of this vessel, is a full and complete bottom job before it leaves the yard compliments of the current owner.

Basic Information

Category: Cruising Yacht

Sub Category: Downeast

Model Year: 2000

Year Built: 2000

Country: United States

Dimensions

LOA: 34' (10.36mm)

Beam: 12.41

Max Draft: 2' (0.61mm)

Speed, Capacities and Weight

Cruise Speed: 25 Knots Kts. (29 MPH)

Max Speed: 30 Knots Kts. (35 MPH)

Water Capacity: 65 Gallons

Holding Tank: 27 Gal Gallons

Fuel Capacity: 300 Gal Gallons

Accommodations

Total Cabins: 1

Total Berths: 1

Total Heads: 1

Hull and Deck Information

Hull Material: Fiberglass

Engine Information

Engines: 2

Manufacturer: Yanmar

Engine Type: Inboard

Fuel Type: Diesel

PHOTOS

1- First Shot



2- side



3- head on



4- Stbd side



5- Stbd advanced



6- Stbd quarter



7- port quarter



8- Stbd side view



9- port side



10- stern



11- cockpit



12-



13- cockpit



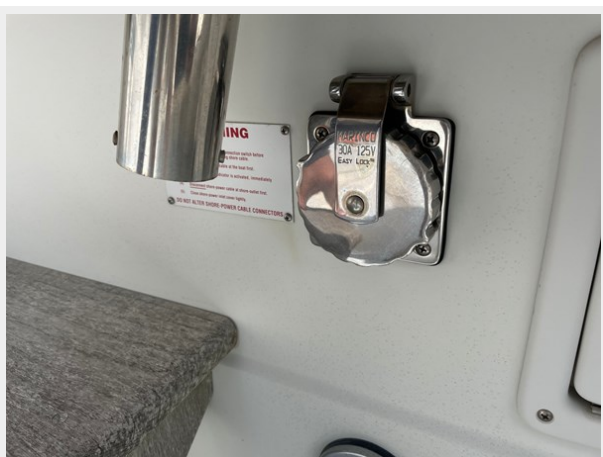
14-



16- Stbd side



15- cockpit



17- port side



18- head on



19- p side bow



20- s side bow



21- windlass



22- anchor



23- foot controls



24- close Stbd



25- close port



25.1-



25.2-



25.3



26- rear



27- rear



28- rear



29- helm



30- helm



31- helm



33- helm



32- helm



34- helm



35- helm



36- helm



37- helm



38-



39-



40-



41-



42-



43-



44-



45-



46-



47-



49-



48-



50-



51-



52- head last



53- galley



54-



55-



56-



57-



58- salon



59-



60-



61-



62-



63-



64-



65-



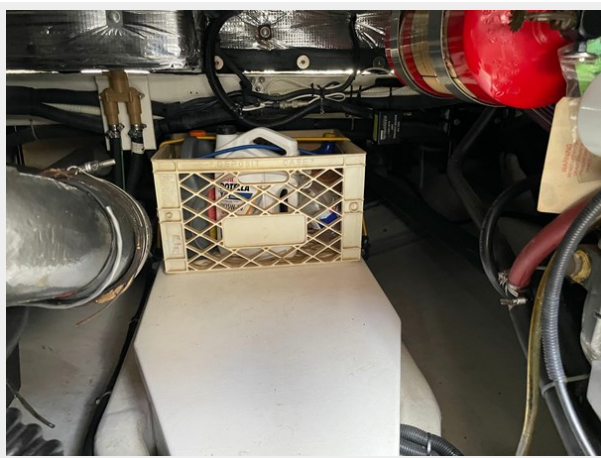
66-



67-



68- engine room



69-



70-



71-



72-



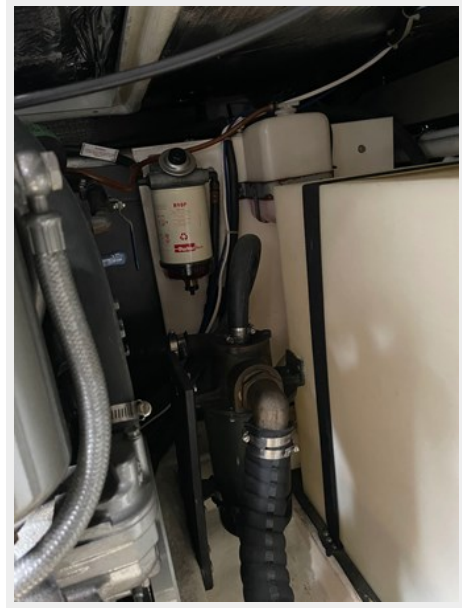
73-



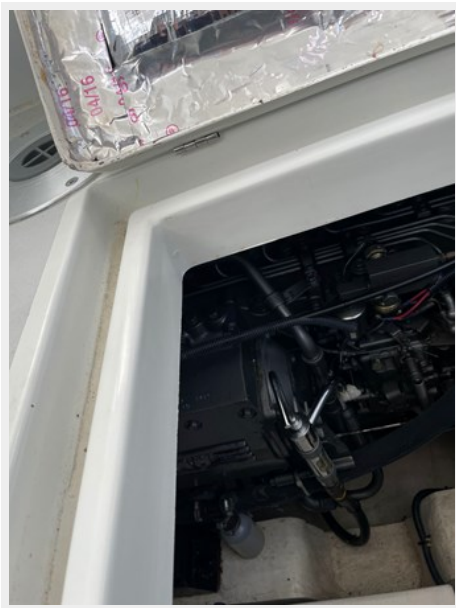
74-



75-



76- engine



77- engine room



78-



79- drives



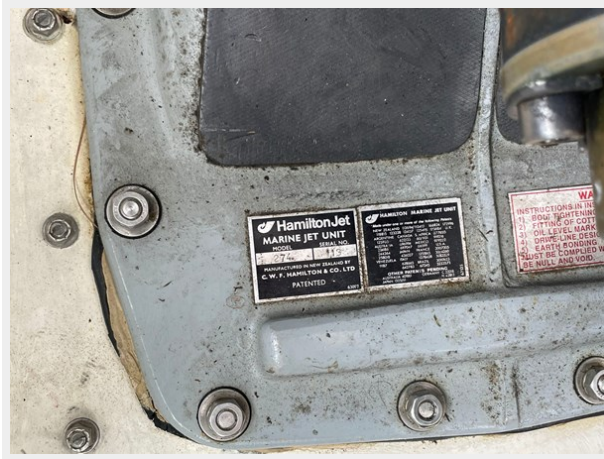
80-



81-



82-



83- generator



84- Gen



85- exhaust



86- drives



87- drives



88- Drive Final



CONTACTS

Andrey Shestakov, leading yacht broker of the sales department of Shestakov Yacht Sales Inc. Shestakov Yacht Sales Inc., the official representative of the Miami/Fort Lauderdale FL headquarters.

Contact details

Email: andrey@shestakovyachtsales.com

Web: shestakovyachtsales.com/en/

Telephones

USA: +1(954)274-4435

Office hours

Monday – Saturday: **9:00 - 21:00** EDT

Sunday: **closed**

Address



Harbour Towne Marina, 850 NE 3rd St,
STE 213, Dania, FL 33004