

ASYA — HEESEN YACHTS



Builder: HEESEN YACHTS

Year Built: 2015

Model: Motor Yacht

Price: **PRICE ON APPLICATION**

LOA: 154' (46.94m)

Beam: 29

Min Draft: 9' 6" (2.9m)

Cruise Speed: 12 Knots Kts. (14 MPH)

Max Speed: 15 Knots Kts. (17 MPH)

Our experienced yacht broker, Andrey Shestakov, will help you choose and buy a yacht that best suits your needs **ASYA — HEESEN YACHTS** from **our catalogue**. Presently, at **Shestakov Yacht Sales Inc.**, we have a wide variety of yachts available on **our sale's list**. We also work in close contact with all the big **yacht manufacturers** from all over the world.

If you would like to buy a yacht **ASYA — HEESEN YACHTS** or would like help answering any questions concerning purchasing, selling or chartering a yacht, please call **+1(954)274-4435**

TABLE OF CONTENTS

TABLE OF CONTENTS	2
SPECIFICATIONS	3
Overview	3
Basic Information	3
Dimensions	3
Speed, Capacities and Weight	3
Accommodations	3
Hull and Deck Information	4
Engine Information	4
PHOTOS	5
CONTACTS	8
Contact details	8
Telephones	8
Office hours	8
Address	8

SPECIFICATIONS

Overview

The 153'3 / 46.7m 4700 Series motor yacht 'Asya' was built in 2015 by Heesen. The yacht's interior has been designed by Bannenbergl & Rowell and her exterior styling is by Omega Architects.

Basic Information

Category: Motor Yacht

Sub Category: Displacement

Model Year: 2015

Year Built: 2015

Dimensions

LOA: 154' (46.94mm)

Beam: 29

Min Draft: 9' 6" (2.9mm)

Speed, Capacities and Weight

Cruise Speed: 12 Knots Kts. (14 MPH) **Cruise Speed Range:** 4000

Max Speed: 15 Knots Kts. (17 MPH) **Max Speed Range:** 2000 Kts.

Gross Tonnage: 499 Pounds

Water Capacity: 5553 Gallons

Fuel Capacity: 17134 Gal Gallons

Accommodations

Total Cabins: 5

Total Berths: 12

Sleeps: 12

Total Heads: 12

Crew Cabin: 10

Hull and Deck Information

Hull Material: Steel

Deck Material: Teak

Hull Configuration: Full Displacement

Exterior Designer: Frank Laupman
(Omega Architects)

Interior Designer: Bannenberg &
Rowell, London

Engine Information

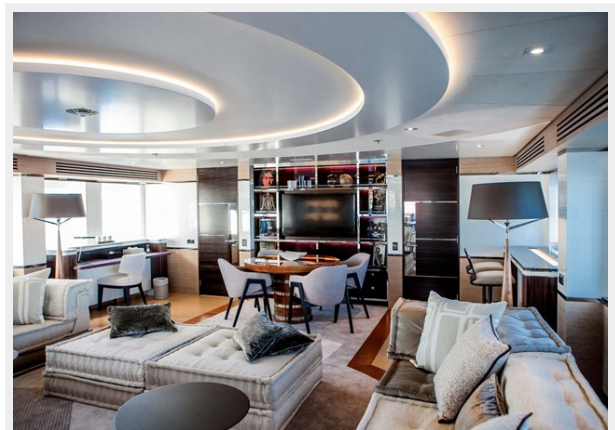
Engines: 2

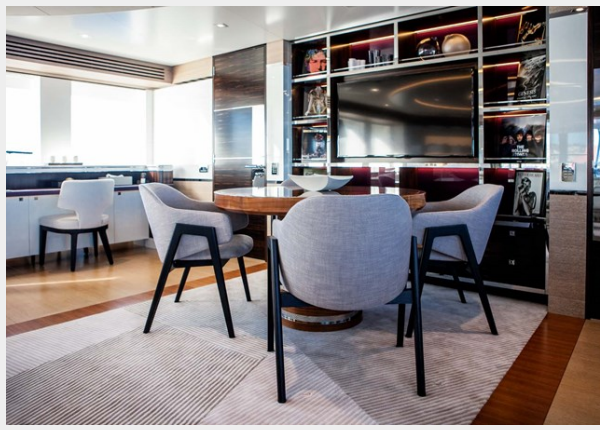
Manufacturer: MTU

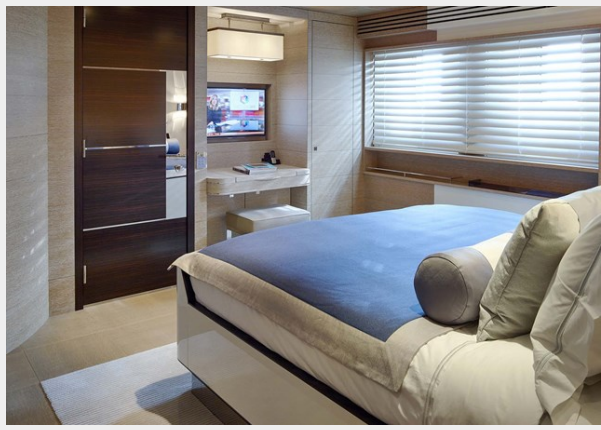
Engine Type: Inboard

Fuel Type: Diesel

PHOTOS







CONTACTS

Andrey Shestakov, leading yacht broker of the sales department of Shestakov Yacht Sales Inc. Shestakov Yacht Sales Inc., the official representative of the Miami/Fort Lauderdale FL headquarters.

Contact details

Email: **andrey@shestakovyachtsales.com**

Web: shestakovyachtsales.com/en/

Telephones

USA: **+1(954)274-4435**

Office hours

Monday – Saturday: **9:00 - 21:00** EDT

Sunday: **closed**

Address



Harbour Towne Marina, 850 NE 3rd St, STE 213, Dania, FL 33004