

## RITZ SEA — SEA RAY



**Builder:** [SEA RAY](#)

**Year Built:** 2016

**Model:** Motor Yacht

**Price:** PRICE ON APPLICATION

**Location:** United States

**LOA:** 59' (17.98mm)

**Beam:** 16

**Max Draft:** 4' (1.22mm)

**Cruise Speed:** 22.59 Knots Kts. (26 MPH)

**Max Speed:** 30.41 Knots Kts. (35 MPH)

Our experienced yacht broker, Andrey Shestakov, will help you choose and buy a yacht that best suits your needs **Ritz Sea — SEA RAY** from **our catalogue**. Presently, at **Shestakov Yacht Sales Inc.**, we have a wide variety of yachts available on **our sale's list**. We also work in close contact with all the big **yacht manufacturers** from all over the world.

If you would like to buy a yacht **Ritz Sea — SEA RAY** or would like help answering any questions concerning purchasing, selling or chartering a yacht, please call **+1(954)274-4435**

# TABLE OF CONTENTS

TABLE OF CONTENTS	2
SPECIFICATIONS	5
Overview	5
Basic Information	5
Dimensions	5
Speed, Capacities and Weight	5
Accommodations	6
Hull and Deck Information	6
Engine Information	6
PHOTOS	7
Profile 2	7
Profile 3	7
Profile 4	7
Profile 5	7
Profile 7	7
Profile 6	7
Flir Night Vision Camera	8
Aft Deck 1	8
Aft Deck 2	8
Aft Deck 3	8
Aft Deck Joystick and Bow Thruster Controls	8
Aft Deck Teak Steps	8
Salon 1	9
Salon 2	9
Salon 3	9
Galley 1	9
Galley 2	9
Galley/ Dinette	9

Dinette	10
Lower Helm 1	10
Lower Helm Joystick Docking Controls	10
Lower Helm 2	10
Companionway	10
Master Stateroom 1	10
Master Stateroom 2	11
Master Stateroom 3	11
Master Head 1	11
Master Head 2	11
Master Head 3	11
Master Head 4	11
Bow VIP Stateroom 1	12
Bow VIP Stateroom 2	12
Bow VIP Stateroom 3	12
STB Stateroom	12
Washer Dryer/ STB Stateroom	12
Bow/ STB Strm/ Day Head 1	12
Bow/ STB Strm/ Day Head 2	13
Bow/ STB Strm/ Day Head 3	13
Flybridge 1	13
Flybridge 2	13
Flybridge 3	13
Flybridge 4	13
Flybridge 5	14
Flybridge 6	14
Flybridge 7	14
Flybridge 8	14
Flybridge Helm w/ Joystick and Bow Thruster Controls	14

---

Flybridge Helm	14
Bow 1	15
Bow 2	15
Bow 3	15
Bow 4	15
Bow 5	15
Bow 6	15
Engine Room 1	16
Engine Room 2	16
Engine Room 3	16
Engine Room 4	16
SeaKeeper 16 Gyro and Spare Props	16
A/Sea Shore Power Converter	16
Exterior	17
Lower Level	17
Main Level	17
CONTACTS	18
Contact details	18
Telephones	18
Office hours	18
Address	18

---

# SPECIFICATIONS

---

## Overview

---

This 2017 Sea Ray L590 Fly that is a one owner yacht, and kept in “Bristol” yacht condition. The level of custom additions, mentioned below in “Highlights”, will quickly demonstrate to any buyer of this vessel that the current owner is a true Yachtsman. You will notice that nothing was overlooked between the electronics, the onboard security system, technical components, and the audio video. All services are up to date, and all past services were always done on schedule. This Yacht is ready for immediate enjoyment!

## Basic Information

---

**Category:** Motor Yacht

**Sub Category:** Flybridge

**Model Year:** 2017

**Year Built:** 2016

**Country:** United States

## Dimensions

---

**LOA:** 59' (17.98mm)

**Beam:** 16

**Max Draft:** 4' (1.22mm)

## Speed, Capacities and Weight

---

**Cruise Speed:** 22.59 Knots Kts. (26 MPH)

**Max Speed:** 30.41 Knots Kts. (35 MPH)

**Gross Tonnage:** 32 Pounds

**Water Capacity:** 200 Gallons

**Fuel Capacity:** 1050 Gal Gallons

---

## Accommodations

---

**Total Cabins:** 3

**Total Berths:** 4

**Sleeps:** 8

**Total Heads:** 2

---

## Hull and Deck Information

---

**Hull Material:** Fiberglass

**Deck Material:** Fiberglass

**Hull Configuration:** Modified V-Hull

**Hull Designer:** Sea Ray

---

## Engine Information

---

**Engines:** 3

**Manufacturer:** Cummins

**Engine Type:** Inboard

**Fuel Type:** Diesel

# PHOTOS

**Profile 2**



**Profile 3**



**Profile 4**



**Profile 5**



**Profile 6**



**Profile 7**



### Flir Night Vision Camera



### Aft Deck 1



### Aft Deck 2



### Aft Deck 3



### Aft Deck Joystick and Bow Thruster Controls



### Aft Deck Teak Steps





**Salon 1**



**Salon 2**



**Salon 3**



**Galley 1**



**Galley 2**



**Galley/ Dinette**



**Dinette**



**Lower Helm 1**



**Lower Helm 2**



**Lower Helm Joystick Docking Controls**



**Companionway**



**Master Stateroom 1**



**Master Stateroom 2**



**Master Stateroom 3**



**Master Head 1**



**Master Head 2**



**Master Head 3**



**Master Head 4**



**Bow VIP Stateroom 1**



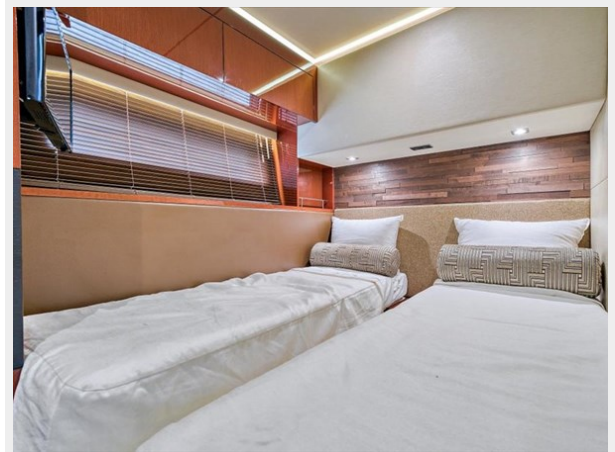
**Bow VIP Stateroom 2**



**Bow VIP Stateroom 3**



**STB Stateroom**



**Washer Dryer/ STB Stateroom**



**Bow/ STB Strm/ Day Head 1**



**Bow/ STB Strm/ Day Head 2**



**Bow/ STB Strm/ Day Head 3**



**Flybridge 1**



**Flybridge 2**



**Flybridge 3**



**Flybridge 4**



**Flybridge 5**



**Flybridge 6**



**Flybridge 7**



**Flybridge 8**



**Flybridge Helm**



**Flybridge Helm w/ Joystick and Bow Thruster Controls**



**Bow 1**



**Bow 2**



**Bow 3**



**Bow 4**



**Bow 5**



**Bow 6**



**Engine Room 1**



**Engine Room 2**



**Engine Room 3**



**Engine Room 4**



**SeaKeeper 16 Gyro and Spare Props**



**A/Sea Shore Power Converter**

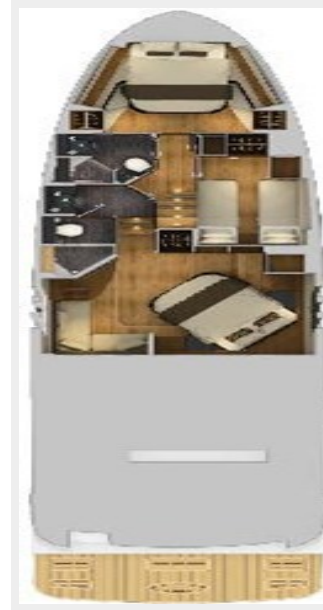




### Exterior



### Lower Level



### Main Level



# CONTACTS

---

Andrey Shestakov, leading yacht broker of the sales department of Shestakov Yacht Sales Inc. Shestakov Yacht Sales Inc., the official representative of the Miami/Fort Lauderdale FL headquarters.

## Contact details

---

Email: **andrey@shestakovyachtsales.com**

Web: [shestakovyachtsales.com/en/](http://shestakovyachtsales.com/en/)

## Telephones

---

USA: **+1(954)274-4435**

## Office hours

---

Monday – Saturday: **9:00 - 21:00** EDT

Sunday: **closed**

## Address

---



Harbour Towne Marina, 850 NE 3rd St, STE 213, Dania, FL 33004