

WINDY — GRAND BANKS



Builder: GRAND BANKS

Year Built: 2002

Model: Trawler Yacht

Price: PRICE ON APPLICATION

LOA: 46' 1" (14.05mm)

Beam: 14.75

Max Draft: 4' 5" (1.35mm)

Cruise Speed: 15 Knots Kts. (17 MPH)

Max Speed: 19 Knots Kts. (22 MPH)

Our experienced yacht broker, Andrey Shestakov, will help you choose and buy a yacht that best suits your needs **Windy — GRAND BANKS** from our catalogue. Presently, at **Shestakov Yacht Sales Inc.**, we have a wide variety of yachts available on our sale's list. We also work in close contact with all the big yacht manufacturers from all over the world.

If you would like to buy a yacht **Windy — GRAND BANKS** or would like help answering any questions concerning purchasing, selling or chartering a yacht, please call **+1(954)274-4435**

TABLE OF CONTENTS

TABLE OF CONTENTS	2
SPECIFICATIONS	6
Overview	6
Basic Information	6
Dimensions	6
Speed, Capacities and Weight	6
Accommodations	6
Hull and Deck Information	7
Engine Information	7
PHOTOS	8
2	8
3	8
4	8
5	8
6	8
7	8
8	9
9	9
10	9
11	9
12	9
13	9
14	10
15	10
16	10
17	10
18	10
19	10

20	11
21	11
22	11
23	11
24	11
25	11
26	12
27	12
28	12
29	12
30	12
31	12
32	13
33	13
34	13
35	13
36	13
37	13
38	14
39	14
40	14
41	14
42	14
43	14
44	15
45	15
46	15
47	15
48	15

49	15
50	16
51	16
52	16
53	16
54	16
55	16
56	17
57	17
58	17
59	17
60	17
61	17
62	18
63	18
64	18
65	18
66	18
67	18
68	19
69	19
70	19
71	19
72	19
73	19
74	20
75	20
CONTACTS	21
Contact details	21

Telephones	21
Office hours	21
Address	21

SPECIFICATIONS

Overview

If you are that discriminating Yachtsman who can appreciate a well maintained Europa with lots of upgrades then you owe it to yourself to take a look at Windy. A change in the owners lifestyle is forcing the sale and the boat is in "turn-key" condition with fresh bottom paint, all brightwork in top shape and the 2000 hour engine service completed. Call today and start making your southbound cruising plans for the winter months.

Basic Information

Category: Trawler Yacht

Sub Category: Europa

Model Year: 2002

Year Built: 2002

Dimensions

LOA: 46' 1" (14.05mm)

Beam: 14.75

Max Draft: 4' 5" (1.35mm)

Speed, Capacities and Weight

Cruise Speed: 15 Knots Kts. (17 MPH) **Max Speed:** 19 Knots Kts. (22 MPH)

Water Capacity: 300 Gallons

Holding Tank: 50 Gal Gallons

Fuel Capacity: 600 Gal Gallons

Accommodations

Total Cabins: 2

Total Heads: 2

Hull and Deck Information

Hull Material: Fiberglass

Engine Information

Engines: 2

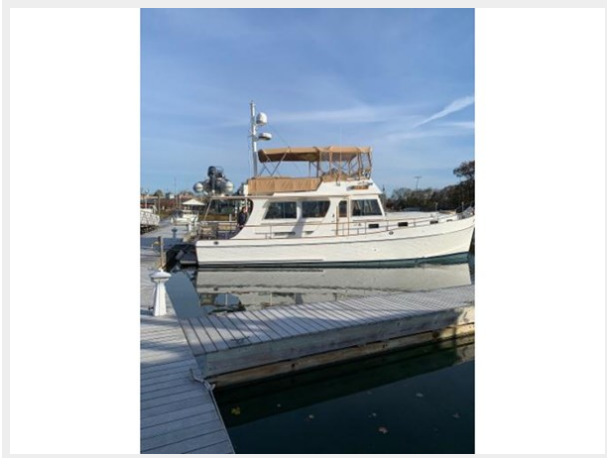
Manufacturer: Caterpillar

Engine Type: Inboard

Fuel Type: Diesel

PHOTOS

2



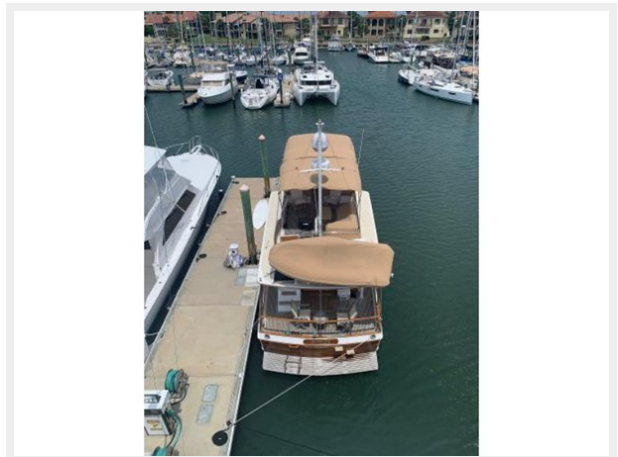
3



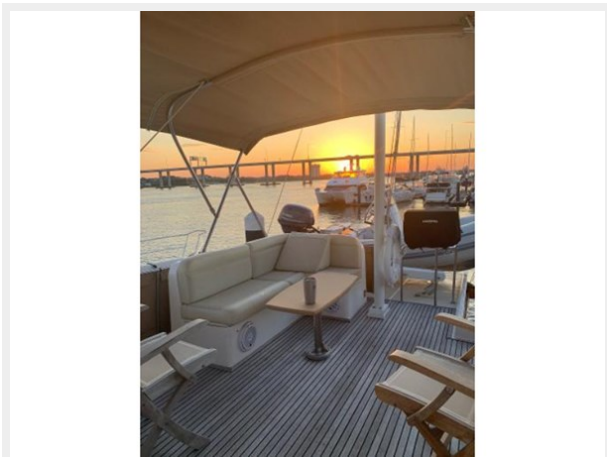
4



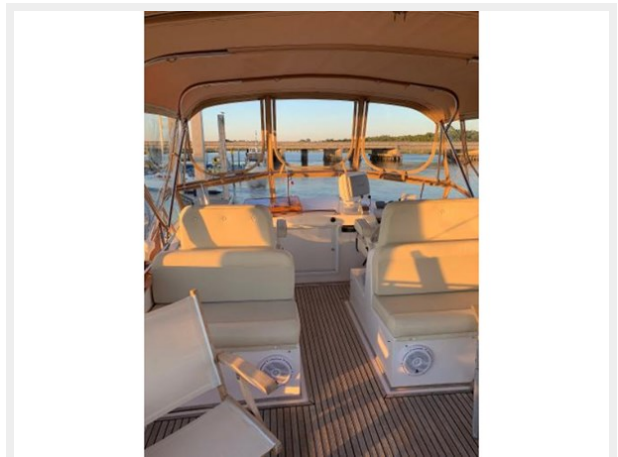
5



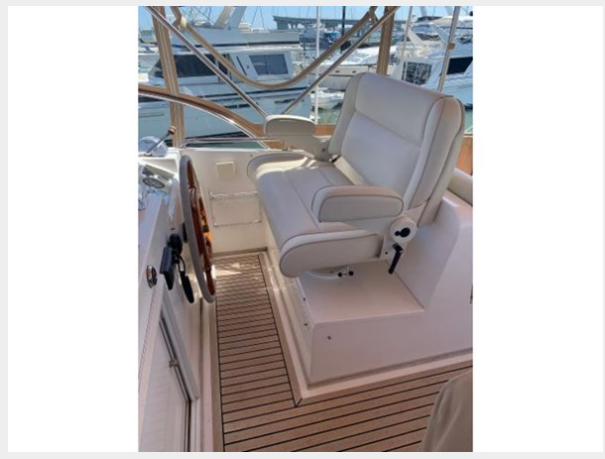
6



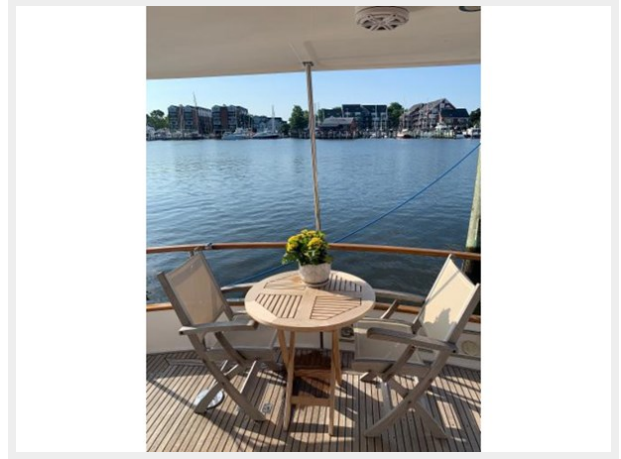
7



8



9



10



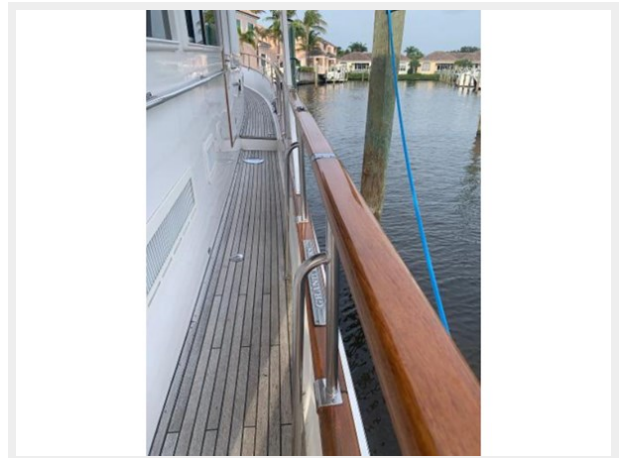
11



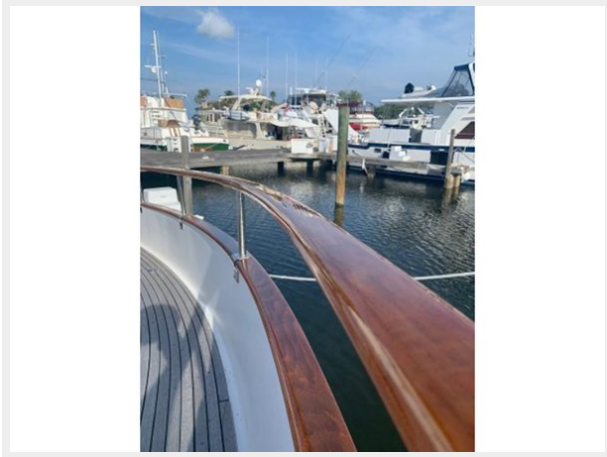
12



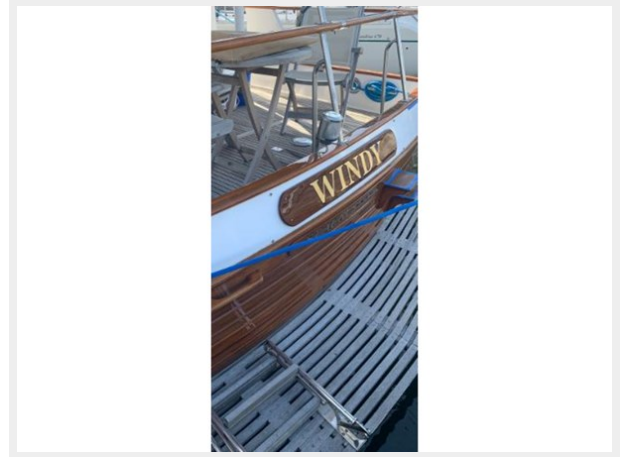
13



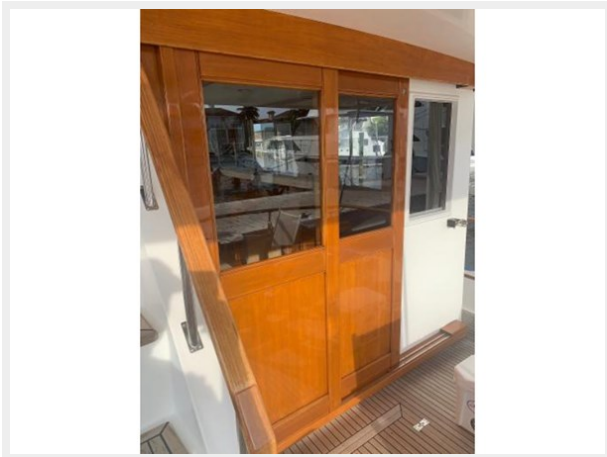
14



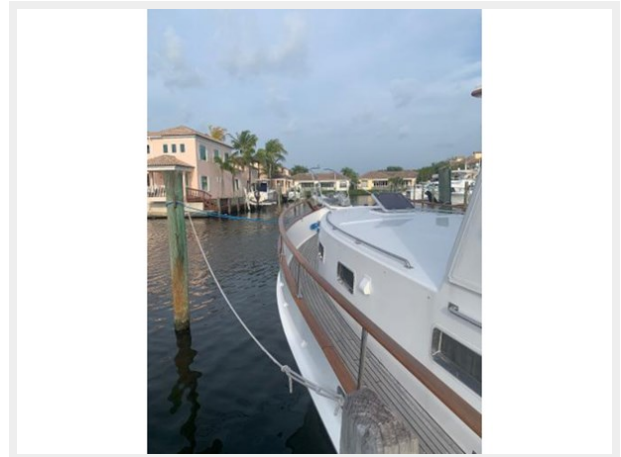
15



16



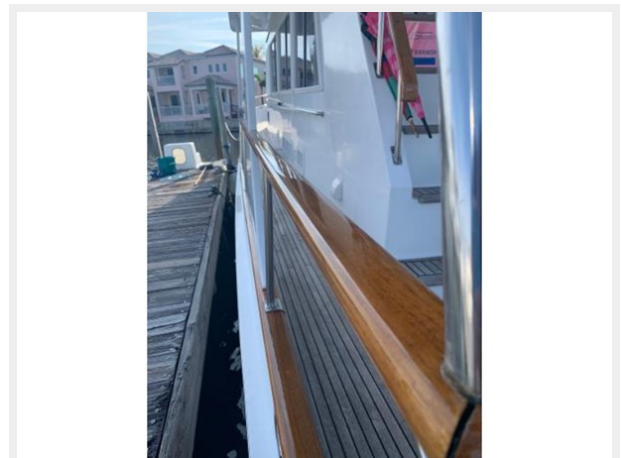
17



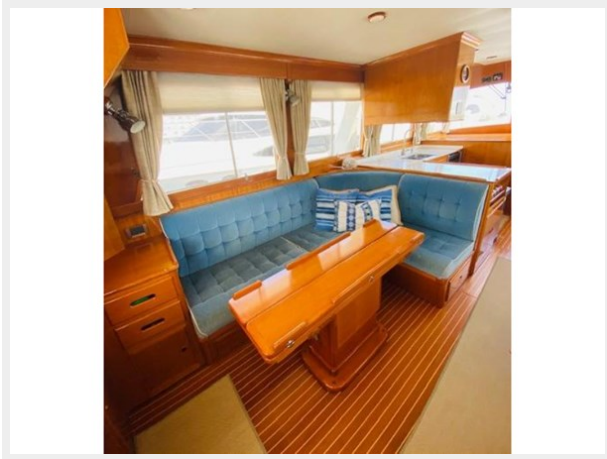
18



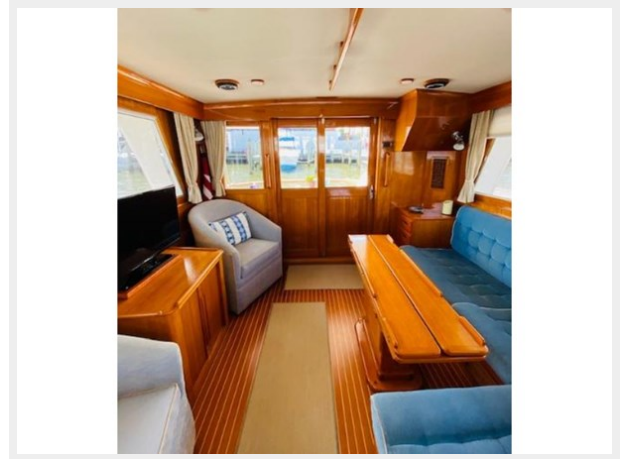
19



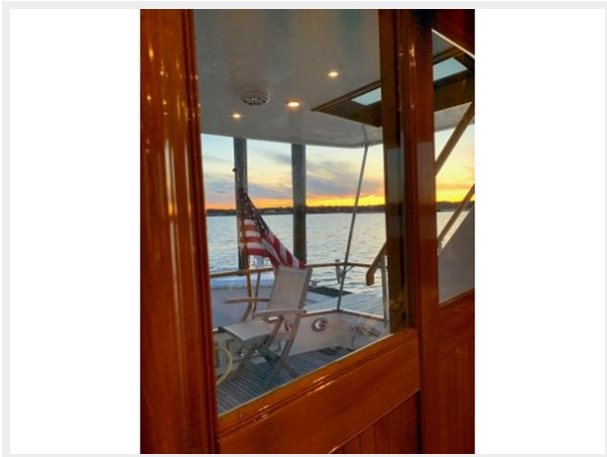
20



21



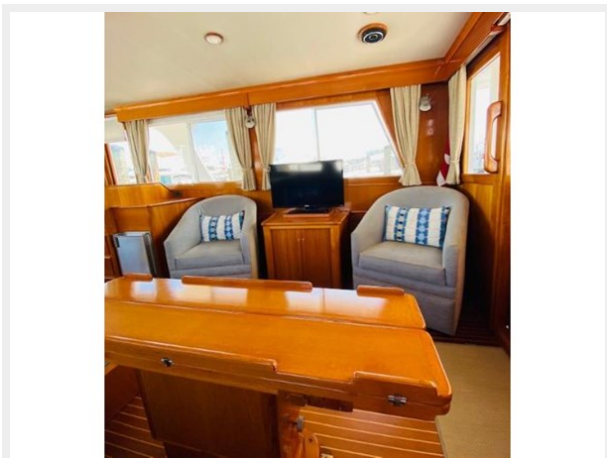
22



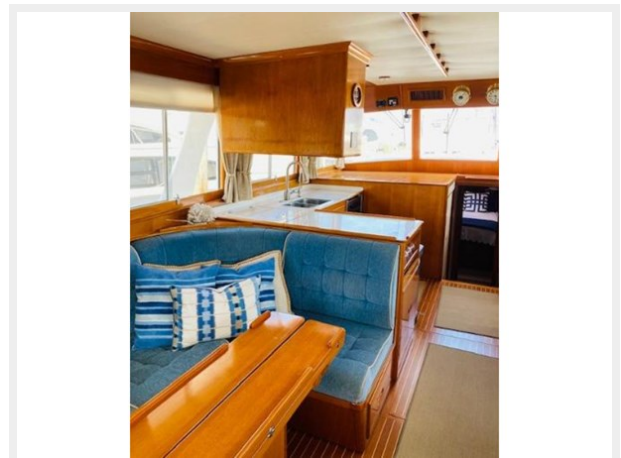
23



24



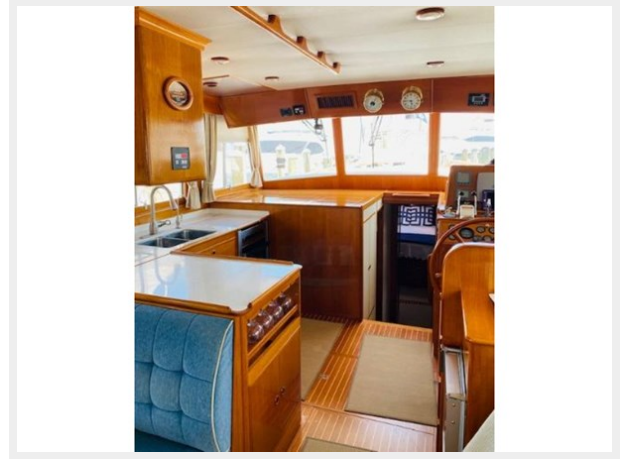
25



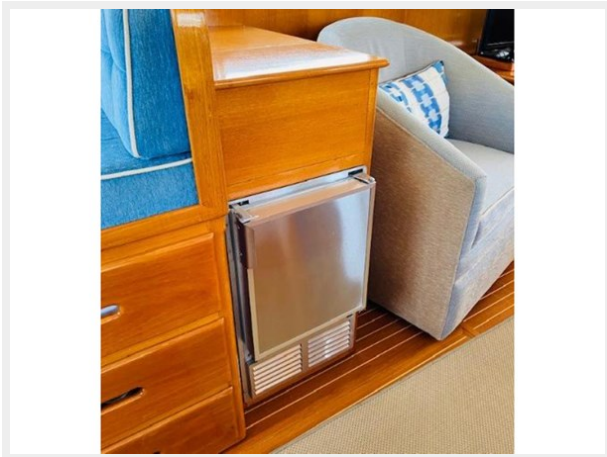
26



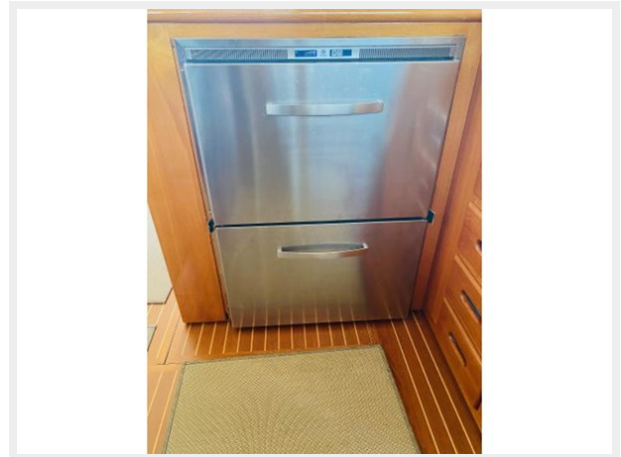
27



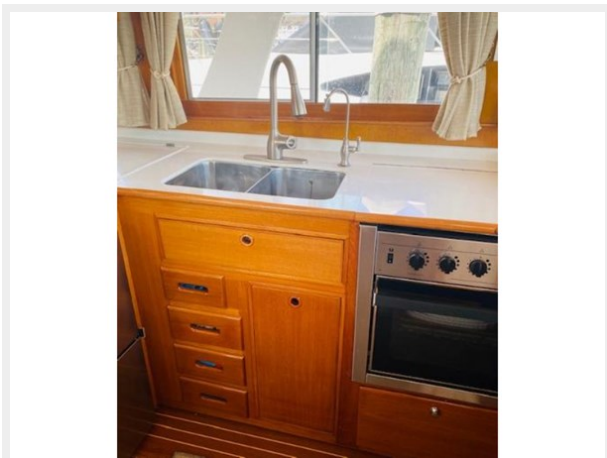
28



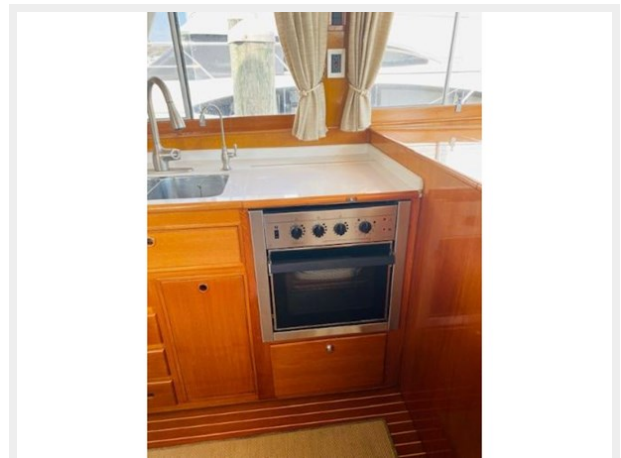
29



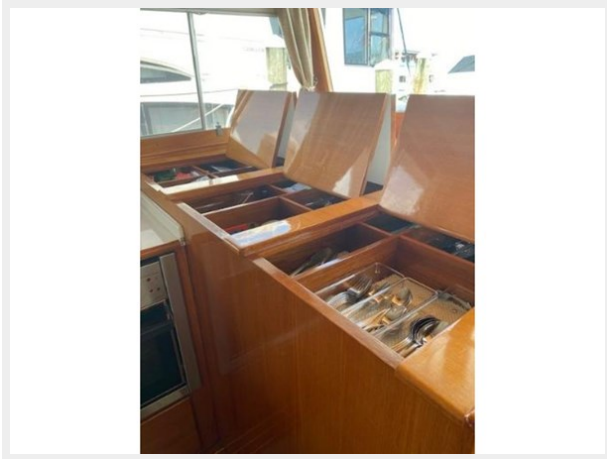
30



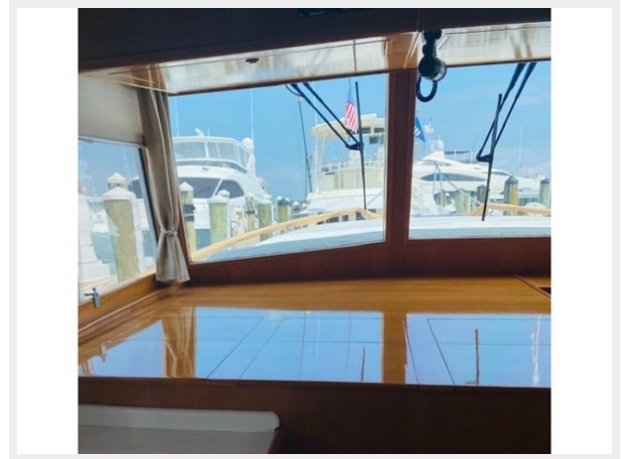
31



32



33



34



35



36



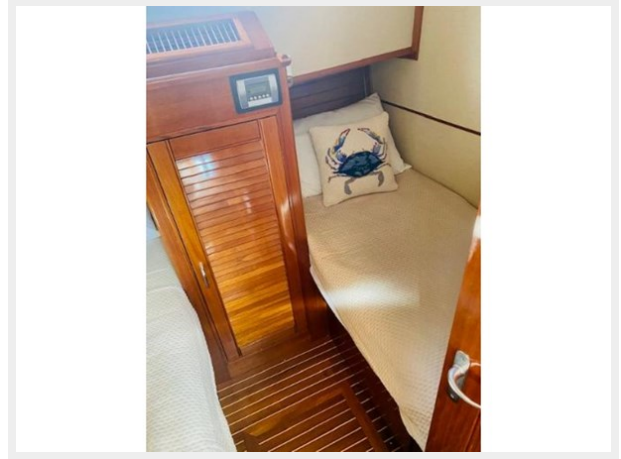
37



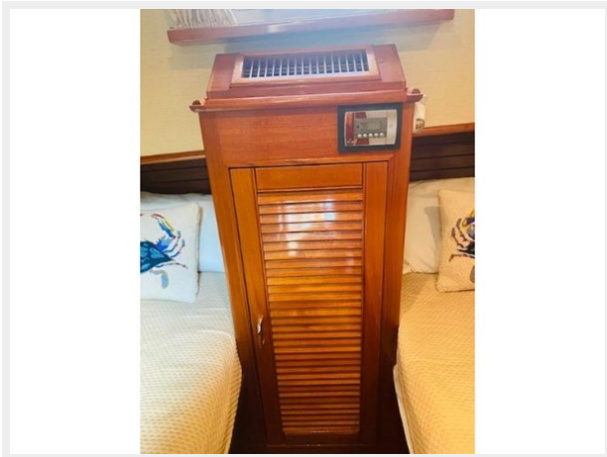
38



39



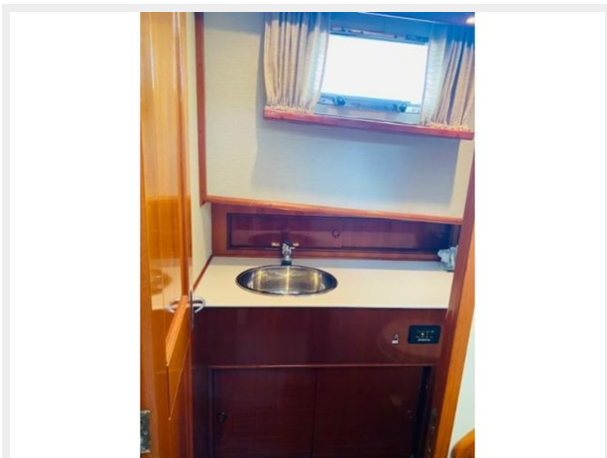
40



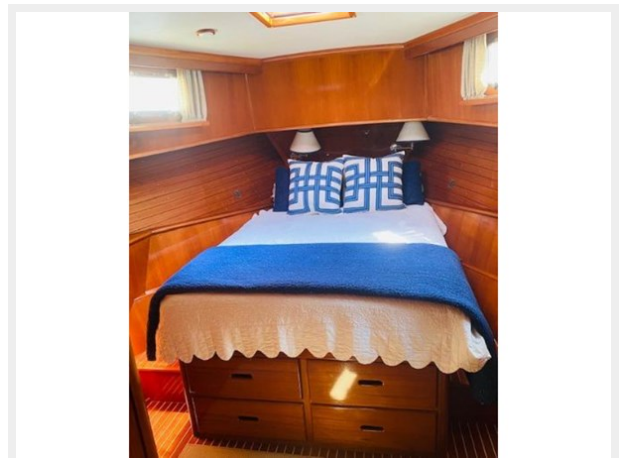
41



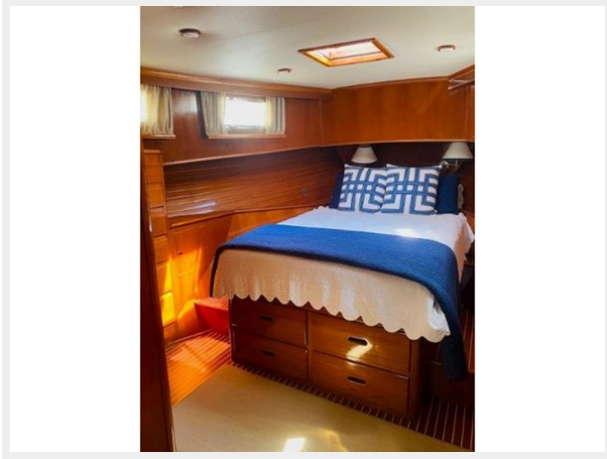
42



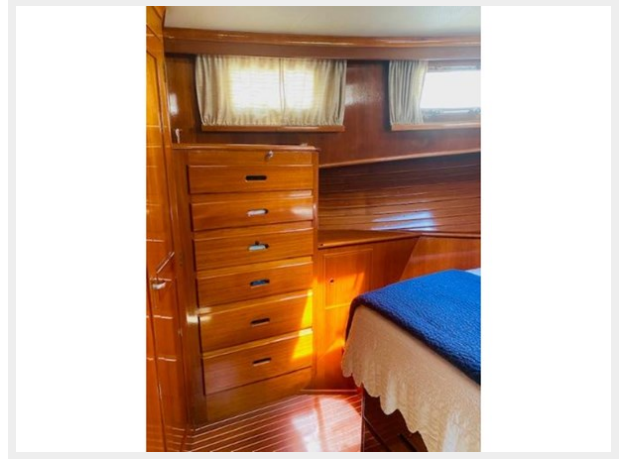
43



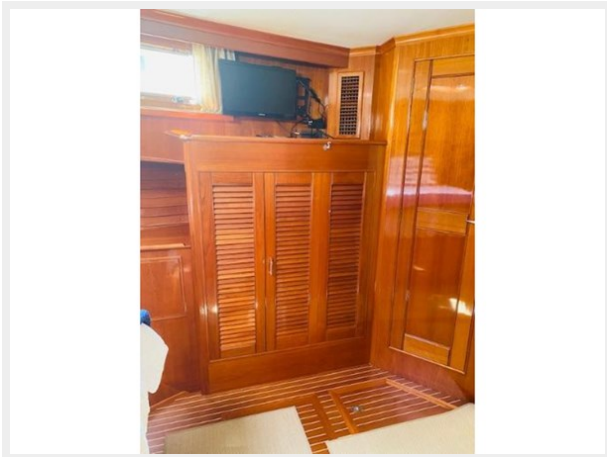
44



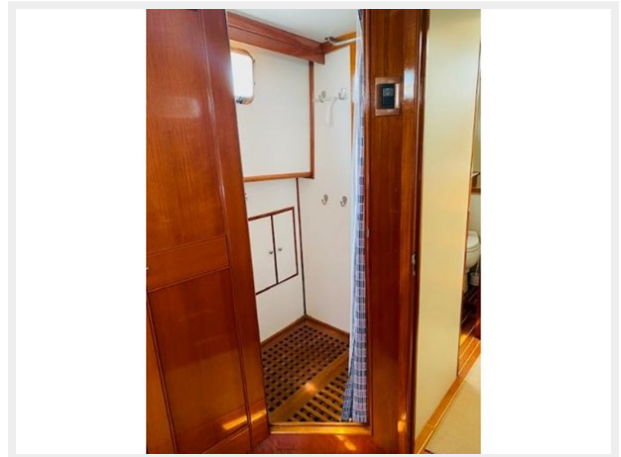
45



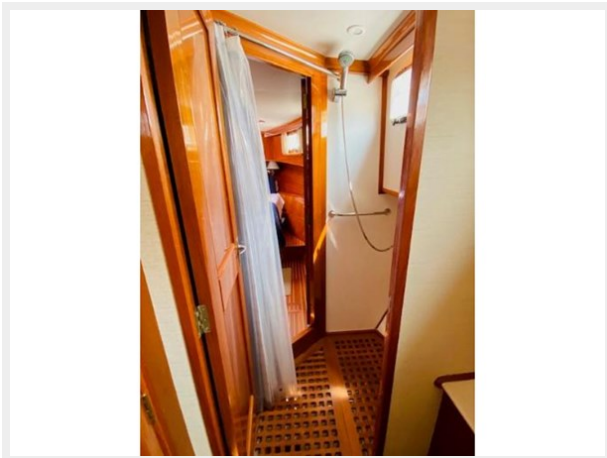
46



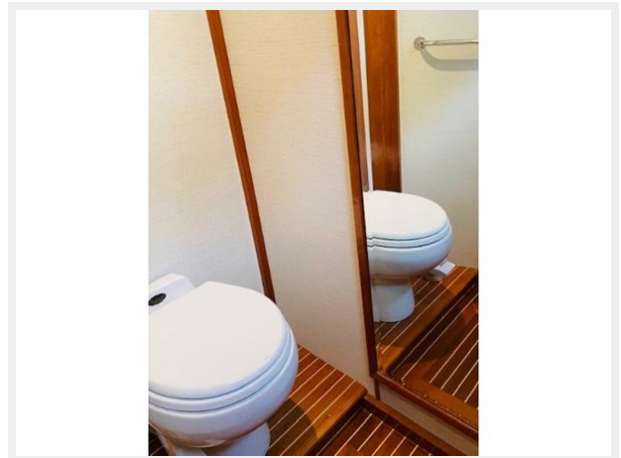
47



48



49



50



51



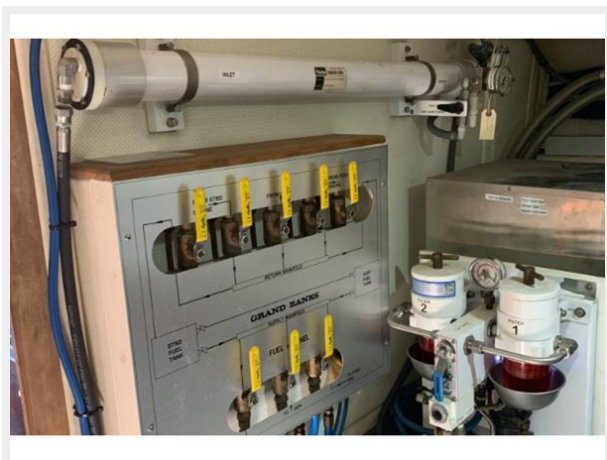
52



53



54



55



56



57



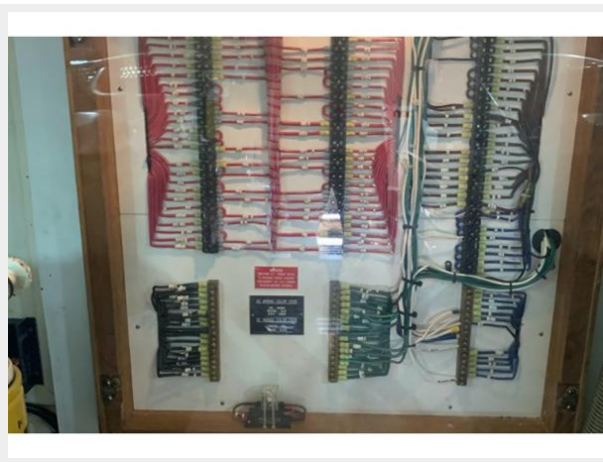
58



59



60



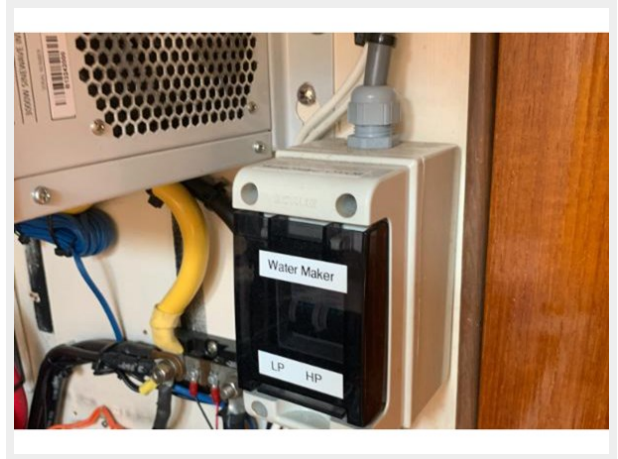
61



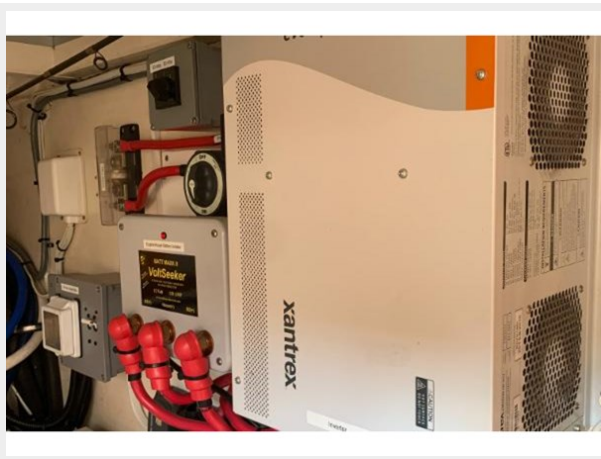
62



63



64



65



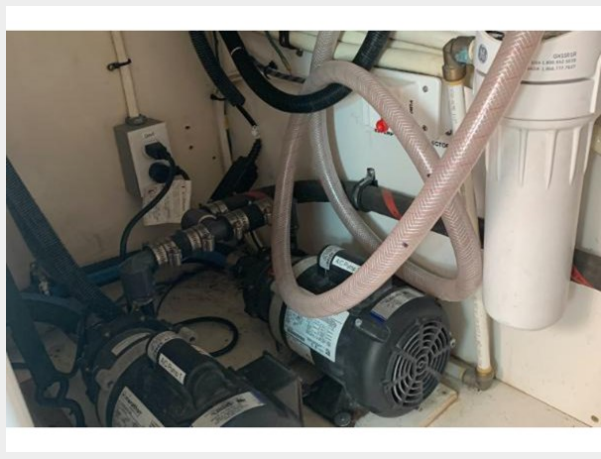
66



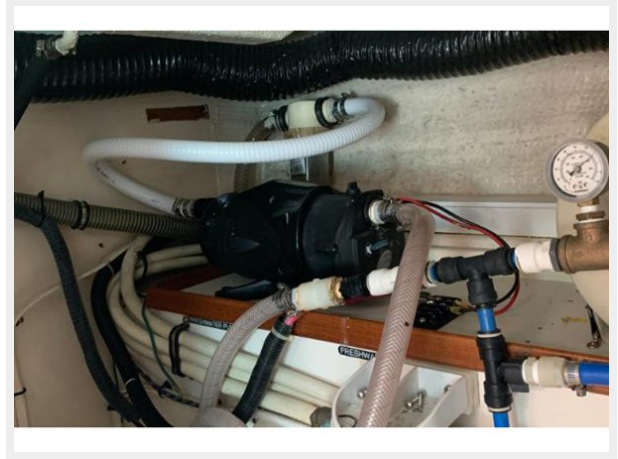
67



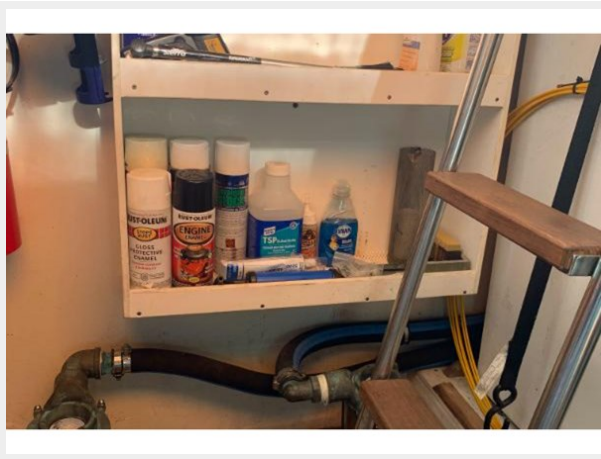
68



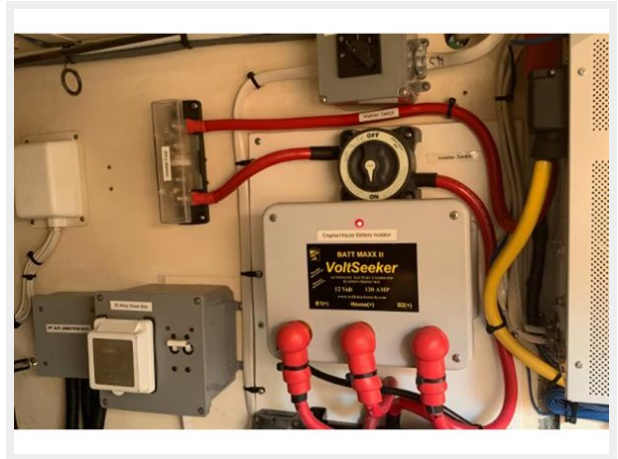
69



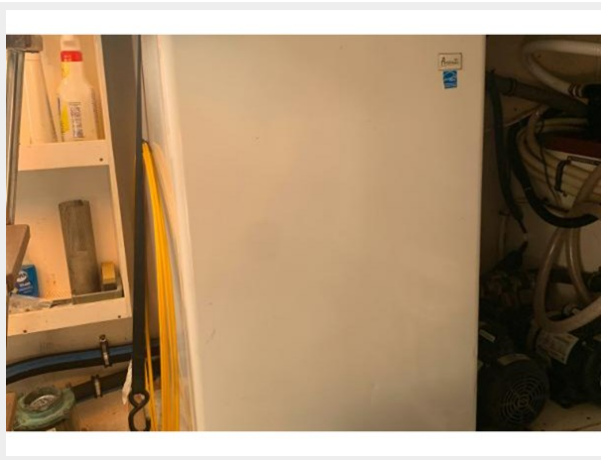
70



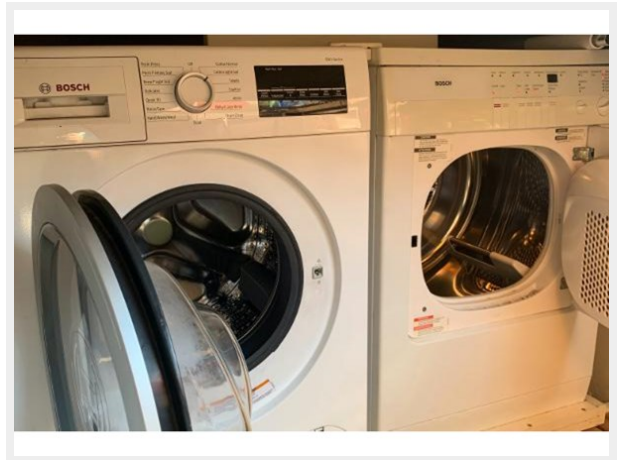
71



72



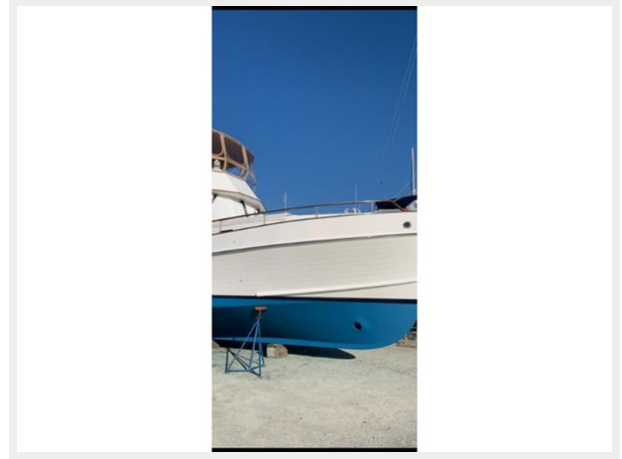
73



74



75



CONTACTS

Andrey Shestakov, leading yacht broker of the sales department of Shestakov Yacht Sales Inc. Shestakov Yacht Sales Inc., the official representative of the Miami/Fort Lauderdale FL headquarters.

Contact details

Email: **andrey@shestakovyachtsales.com**

Web: shestakovyachtsales.com/en/

Telephones

USA: **+1(954)274-4435**

Office hours

Monday – Saturday: **9:00 - 21:00** EDT

Sunday: **closed**

Address



Harbour Towne Marina, 850 NE 3rd St, STE 213, Dania, FL 33004