

TACANUYA — SWIFTSHIPS



Builder: SWIFTSHIPS

Year Built: 1992

Model: Displacement

Price: Price on Application

Location: France

LOA: 183' 9" (56mm)

Beam: 30.51

Max Draft: 9' 3" (2.8mm)

Cruise Speed: 15 Knots Kts. (17 MPH)

Max Speed: 17 Knots Kts. (20 MPH)

Our experienced yacht broker, Andrey Shestakov, will help you choose and buy a yacht that best suits your needs **TACANUYA — SWIFTSHIPS** from our catalogue. Presently, at Shestakov Yacht Sales Inc., we have a wide variety of yachts available on our sale's list. We also work in close contact with all the big yacht manufacturers from all over the world.

If you would like to buy a yacht **TACANUYA — SWIFTSHIPS** or would like help answering any questions concerning purchasing, selling or chartering a yacht, please call **+1(954)274-4435**

TABLE OF CONTENTS

TABLE OF CONTENTS	2
SPECIFICATIONS	3
Overview	3
Basic Information	3
Dimensions	3
Speed, Capacities and Weight	3
Accommodations	4
Hull and Deck Information	4
Engine Information	4
PHOTOS	5
CONTACTS	11
Contact details	11
Telephones	11
Office hours	11
Address	11

SPECIFICATIONS

Overview

TACANUYA is a 56m Swiftships, built in 1992 and has been impeccably maintained and has undergone numerous refits. Her recently overhauled twin Caterpillar engines provide a cruising speed of 15 knots and 17 knots max. speed, with only 700 hours on each. With interior styling by H2 design, she offers an elegant and spacious interior for up to 16 guests, with equally spacious deck areas for the perfect on water experience.

Basic Information

Category: Displacement

Sub Category: Displacement

Model Year: 1992

Year Built: 1992

Country: France

Dimensions

LOA: 183' 9" (56mm)

Beam: 30.51

Max Draft: 9' 3" (2.8mm)

Speed, Capacities and Weight

Cruise Speed: 15 Knots Kts. (17 MPH)

Cruise Speed Range: 3200

Max Speed: 17 Knots Kts. (20 MPH)

Gross Tonnage: 610 Pounds

Water Capacity: 26500 Gallons

Fuel Capacity: 25096.34 Gal Gallons

Fuel Consumption: 118.88 Gal Gallons

Accommodations

Total Cabins: 7

Total Berths: 7

Sleeps: 17

Total Heads: 9

Crew Cabin: 14

Crew Berths: 14

Crew Heads: 4

Hull and Deck Information

Hull Material: Aluminum

Hull Configuration: Full Displacement

Exterior Designer: Grant Robinson

Interior Designer: H2 / Pinto Koutoukos

Engine Information

Engines: 2

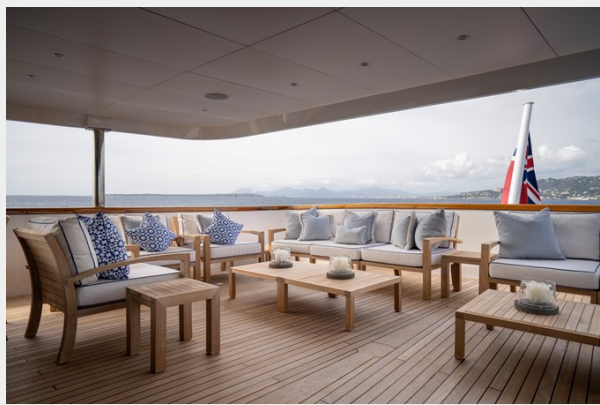
Manufacturer: Caterpillar

Engine Type: Inboard

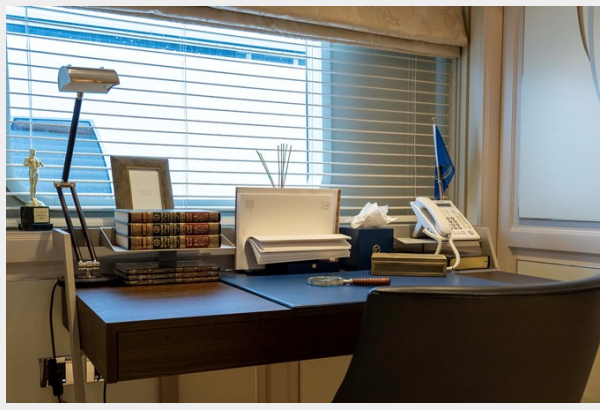
Fuel Type: Diesel

PHOTOS

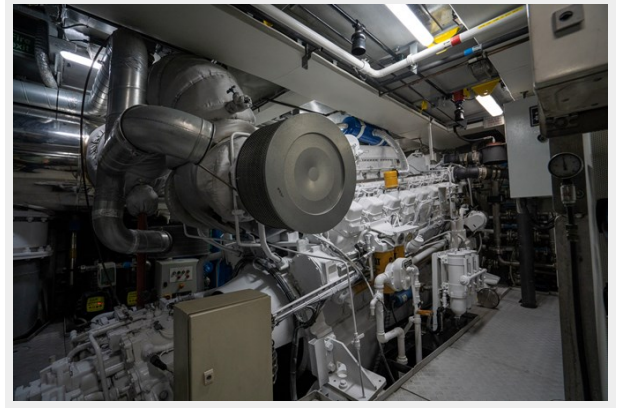
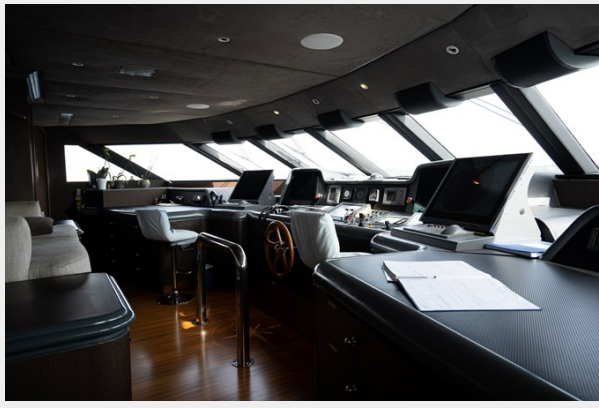












CONTACTS

Andrey Shestakov, leading yacht broker of the sales department of Shestakov Yacht Sales Inc. Shestakov Yacht Sales Inc., the official representative of the Miami/Fort Lauderdale FL headquarters.

Contact details

Email: andrey@shestakovyachtsales.com

Web: shestakovyachtsales.com/en/

Telephones

USA: +1(954)274-4435

Office hours

Monday – Saturday: **9:00 - 21:00** EDT

Sunday: **closed**

Address



Harbour Towne Marina, 850 NE 3rd St,
STE 213, Dania, FL 33004