

## HY-YACHT — SEA RAY



**Builder:** SEA RAY

**Year Built:** 2014

**Model:** Motor Yacht

**Price:** PRICE ON APPLICATION

**Location:** United States

**LOA:** 51' (15.54mm)

**Beam:** 14.66

**Min Draft:** 3' 11" (1.19mm)

Our experienced yacht broker, Andrey Shestakov, will help you choose and buy a yacht that best suits your needs **Hy-Yacht — SEA RAY** from our catalogue. Presently, at Shestakov Yacht Sales Inc., we have a wide variety of yachts available on our sale's list. We also work in close contact with all the big yacht manufacturers from all over the world.

If you would like to buy a yacht **Hy-Yacht — SEA RAY** or would like help answering any questions concerning purchasing, selling or chartering a yacht, please call **+1(954)274-4435**

# TABLE OF CONTENTS

---

TABLE OF CONTENTS	2
SPECIFICATIONS	5
Overview	5
Basic Information	7
Dimensions	7
Speed, Capacities and Weight	8
Accommodations	8
Hull and Deck Information	8
Engine Information	8
PHOTOS	9
DJI_0215-Edit	9
DJI_0200-Edit	9
DJI_0168-Edit	9
DJI_0154-Edit	9
DJI_0160-Edit	9
DJI_0163	9
DJI_0156-Edit	10
DJI_0158-Edit	10
DSC_7245	10
DSC_7253	10
DSC_7257	10
DSC_7268-Edit	10
DSC_7198	11
DSC_7201	11
DSC_7224	11
DSC_7182	11
DSC_7187-Edit	11
DSC_7168	11

---

DSC_7161	12
DSC_7090	12
DSC_7154-Edit	12
DSC_7157	12
DSC_7124	12
DSC_7104	12
DSC_7136	13
DSC_7043	13
DSC_7020	13
DSC_7045	13
DSC_6283-Edit	13
DSC_6194	13
DSC_6205	14
DSC_6248-Edit	14
DSC_6222	14
DSC_6237	14
DSC_5959	14
DSC_5969	14
DSC_5933-Edit	15
DSC_5927	15
DSC_5884-Edit	15
DSC_6014-Edit	15
DSC_6089	15
DSC_6095	15
DSC_6097	16
DSC_6100	16
DSC_6125-Edit	16
DSC_6133-Edit	16
DSC_6149-Edit	16

---

---

DSC_6110-Edit	16
DSC_7792-Edit	17
DSC_7796	17
DSC_7803	17
DSC_7278	17
DSC_7279	17
DSC_7284	17
DSC_7819	18
CONTACTS	19
Contact details	19
Telephones	19
Office hours	19
Address	19

# SPECIFICATIONS

---

## Overview

---

**Meticulously maintained by a knowledgeable yacht owner, constantly upgraded, and equipped with the largest engine package available (QSC 8.3L 600s), this 510 is ready for immediate delivery!**

**“Depart the cave”** is a mantra builders have adapted when designing cabins of express cruisers, in an effort to give boaters the feel of **being more connected with the outside, yet reduce downtime putting on/off canvas, and provide a climate controlled helm station.** No boat mastered that philosophy **better** than the **Sea Ray 510 Sundancer.** **Notable options and upgrades** include:

- **Cummins QSC 8.3L 600s with Zeus pods - new port Zeus pod with *full* warranty (2021)**
- **BoatMate wireless joystick remote (2022)**
- **New AC units in master stateroom and lower salon (2020)**
  
- **Brig 2021 F330HT Falcon tender with 20HP Honda four stroke outboard**
- **Fusion MX-ARX70 Bluetooth stereo (2019)**
- **Wifi access point**
- **Cockpit teak sole (2019)**
- **High gloss cockpit teak table (2019)**
- **Raymarine E125W chartplotter / radar**
- **Raymarine E125W chartplotter/ auxiliary display**
- **Raymarine fish finder**
- **Sunroom, salon, and master stateroom TVS updated to larger, smart TVs**
- **Bose sound bar** added to salon TV
- **Upgraded Polk speakers** in upper salon
- **Upgraded Portland Mattress in master stateroom**
- **Upgraded courtesy lighting to blue LEDs**
- **Multi-colored remote controlled LED strip light** under transom
- **Cockpit electric retractable sunshade**
- **Cockpit ice maker**
- **Hydraulic marine lift swim platform system**
- **Cockpit grill**
- **Walnut matte interior woodwork and cabinetry**
- **Walnut wood blinds**
- **Wood flooring** – salon and galley
- **Wood flooring** – sunroom
- **DSS satellite** television system
- **Transformer shore power isolation boost**
- **TV with DVD and gaming port** – forward stateroom
- **TV with DVD** – Sunroom

- Sunroof sunshades, manual
- Vacuum system, central
- **Washer/Dryer combo**
- Macerator with seacock interlock system
- **Sun pad** – forward deck with backrest
- Windshield with **opening side windows**
- Canvas, mesh windshield shades
- **Manual hardtop vent**
- Canvas – dash cover
- Spotlight with dual halogen bulbs (ACR)
- **Lighting, underwater – transom**
- Rod holders (2x)
- Windlass – **all chain**
- Stainless steel anchor
- Yacht Flag and Flag Pole

**Simply put**, the boat flat out **runs**. It will hit **34kn at wide open throttle and turns on a dime** thanks to the **Zeus pod system**. A traditional inboard boat loses steering thrust due to the lag between the propellers and the rudder. The Zeus system, however, eliminates this efficiency as **the entire pod articulates**, providing a turning radius and sport feeling that is usually **reserved for smaller sport boats**. In a hard turn, the horizon is visible through the hardtop skylights and the boat banks to either side – which makes it **easy to avoid debris in the water**.

The **Zeus pods** have **integrated, automatic trim tabs** that not only keep the boat running level, but also assist in **getting on plane quickly and with unparallel visibility** as there is no loss of the horizon. The Zeus pod package of course features **joystick docking** which makes docking incredibly easy and **severely flattens the learning curve when moving to a larger boat**. The system is rounded out with an **integrated autopilot and Skyhook feature** which automatically uses the engines and transmissions to keep your heading and position, which makes waiting for bridges or a fuel pier completely effortless.

**The full-beam hydraulic swim platform** makes deploying a tender easy but still provides ample storage accessible from the transom. **The cockpit has a teak sole and a custom high-gloss teak table**. A shurshade **retractable, electric sun awning** provide cockpit shade even on the sunniest days. To starboard is an **outdoor grill with icemaker** that, when the salon doors are open, blend perfectly into the starboard side wetbar in the upper salon that **features a refrigerator, sink, countertop, and lots of storage**.

The **sliding salon doors** collapse to the port side to create a seamless entry from the cockpit to the upper salon. The upper salon features **hardwood walnut floors** which avoids the problem of tracking in dirt from the cockpit and are easy to keep clean. An **ultraleather sofa to port** sits on a raised floor which make provide for **great companion visibility** of the windshield and salon windows, either underway, or at rest.

A **double-wide helm seat** swivels to face the port side sofa and allows for a small crowd to enjoy each others company in the upper salon. The helm features **dual Raymarine chartplotters, digital engine information, redundant analog gauges, stereo control, switches, and a smooth shifting, digital throttle with docking joystick.**

**An atrium** keeps the lower salon completely open and connected to the upper salon, which means those down below will **not** feel isolated and creates a living space that feels much larger than it truly is. A portside galley **features a full size refrigerator and freezer, plenty of storage, microwave, corian countertop, and two burner stove.**

**Another ultraleather sofa sits to the starboard side of the lower salon.** It's seat bottom can slide out to **convert the L-shape to a wide bed for an extra guest.** The salon also features easy access to the day head, shared by another access from the VIP stateroom.

The **aft master** has a unique **split vanity and head**, which means one person can be getting ready to retire for the night or head out on the town, while the other is showering or using the head. A wide bed lifts to reveal immense storage underneath and sits opposite a **large television with soundbar.**

The forward guest cabin has an **electrically actuated, tilting bed.** Not only does this save space in the cabin during the day, but it also provides the perfect angle to relax on the bed and watch the wall mounted television. **Ensuite access to the day head** provides complete privacy.

In a day of continually shrinking engine rooms, the bilge of the 510 is **impressively large.** Outboard access to either engine is easy and all **plumbing is neatly secured to the starboard and port bulkheads. An oil change system, battery remotes, and full array of DC breakers** make it a very user-friendly engine room and easy to work in.

The 510 Sundancer is a **homerun**, and this particular one is the **finest** example you'll find.

***\*Please call ahead to schedule an appointment as this boat is offsite\****

## Basic Information

---

**Category:** Motor Yacht

**Model Year:** 2014

**Year Built:** 2014

**Country:** United States

## Dimensions

---

**LOA:** 51' (15.54mm)

**Beam:** 14.66

**Min Draft:** 3' 11" (1.19mm)

---

## Speed, Capacities and Weight

---

**Gross Tonnage:** 43700 Pounds

**Water Capacity:** 110 Gallons

**Holding Tank:** 60 Gal Gallons

**Fuel Capacity:** 400 Gal Gallons

---

## Accommodations

---

**Total Cabins:** 2

**Total Berths:** 3

**Sleeps:** 5

**Total Heads:** 2

---

## Hull and Deck Information

---

**Hull Material:** Fiberglass

**Deck Material:** Fiberglass

**Hull Configuration:** Modified Deep Vee

**Hull Color:** White

---

## Engine Information

---

**Engines:** 2

**Manufacturer:** Cummins

**Engine Type:** Inboard

**Fuel Type:** Diesel



# PHOTOS

**DJI\_0215-Edit**



**DJI\_0200-Edit**



**DJI\_0168-Edit**



**DJI\_0154-Edit**



**DJI\_0160-Edit**



**DJI\_0163**



**DJI\_0156-Edit**



**DJI\_0158-Edit**



**DSC\_7245**



**DSC\_7253**



**DSC\_7257**



**DSC\_7268-Edit**



DSC\_7198



DSC\_7201



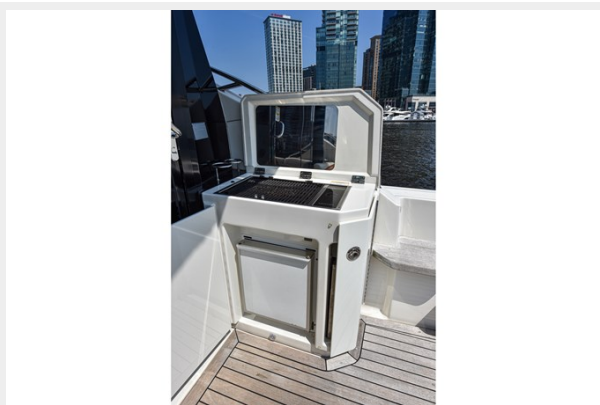
DSC\_7224



DSC\_7182



DSC\_7187-Edit



DSC\_7168



DSC\_7161



DSC\_7090



DSC\_7154-Edit



DSC\_7157



DSC\_7124



DSC\_7104



DSC\_7136



DSC\_7043



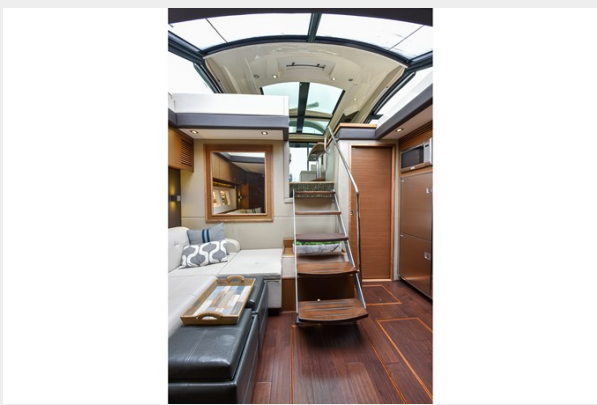
DSC\_7020



DSC\_7045



DSC\_6283-Edit



DSC\_6194



DSC\_6205



DSC\_6248-Edit



DSC\_6222



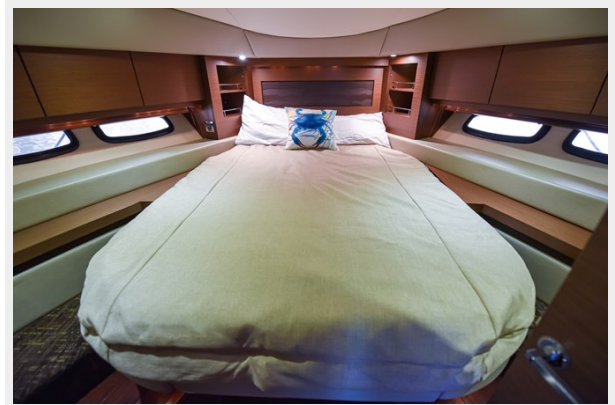
DSC\_6237



DSC\_5959



DSC\_5969



DSC\_5933-Edit



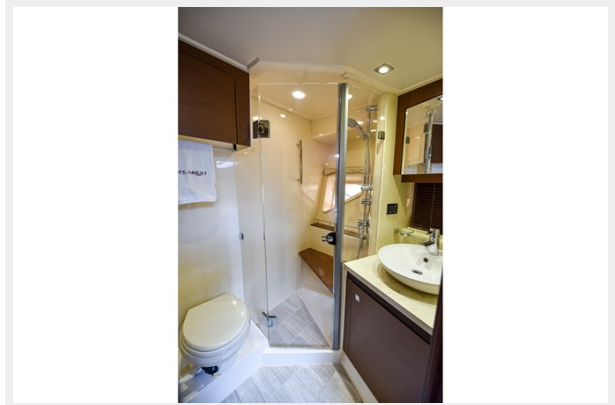
DSC\_5927



DSC\_5884-Edit



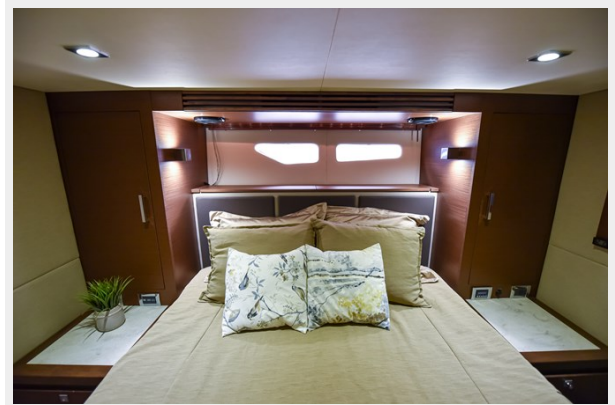
DSC\_6014-Edit



DSC\_6089



DSC\_6095



DSC\_6097



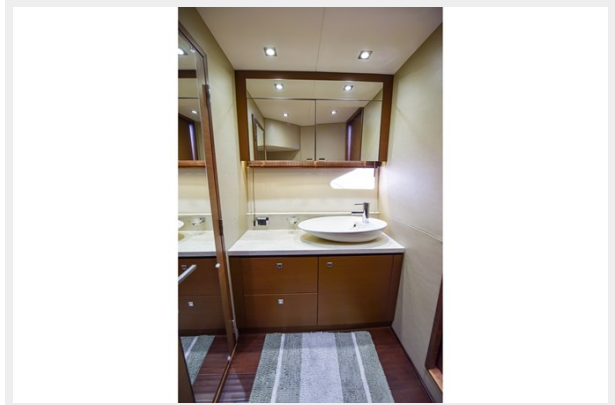
DSC\_6100



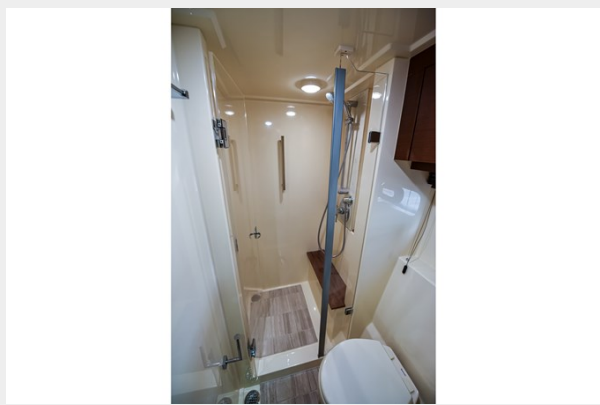
DSC\_6125-Edit



DSC\_6133-Edit



DSC\_6149-Edit



DSC\_6110-Edit





DSC\_7792-Edit



DSC\_7796



DSC\_7803



DSC\_7278



DSC\_7279



DSC\_7284



DSC\_7819



# CONTACTS

---

Andrey Shestakov, leading yacht broker of the sales department of Shestakov Yacht Sales Inc. Shestakov Yacht Sales Inc., the official representative of the Miami/Fort Lauderdale FL headquarters.

## Contact details

---

Email: [andrey@shestakovyachtsales.com](mailto:andrey@shestakovyachtsales.com)

Web: [shestakovyachtsales.com/en/](http://shestakovyachtsales.com/en/)

## Telephones

---

USA: +1(954)274-4435

## Office hours

---

Monday – Saturday: **9:00 - 21:00** EDT

Sunday: **closed**

## Address

---



Harbour Towne Marina, 850 NE 3rd St,  
STE 213, Dania, FL 33004