

SOLITUDE — FRIENDSHIP YACHTS



Builder: FRIENDSHIP YACHTS

Year Built: 2006

Model: Daysailer

Price: PRICE ON APPLICATION

Location: United States

LOA: 40' 9" (12.42mm)

Beam: 12.83

Min Draft: 3' 9" (1.14mm)

Cruise Speed: 6.5 Knots Kts. (7 MPH)

Our experienced yacht broker, Andrey Shestakov, will help you choose and buy a yacht that best suits your needs **SOLITUDE — FRIENDSHIP YACHTS** from our catalogue. Presently, at Shestakov Yacht Sales Inc., we have a wide variety of yachts available on our sale's list. We also work in close contact with all the big yacht manufacturers from all over the world.

If you would like to buy a yacht **SOLITUDE — FRIENDSHIP YACHTS** or would like help answering any questions concerning purchasing, selling or chartering a yacht, please call **+1(954)274-4435**

TABLE OF CONTENTS

TABLE OF CONTENTS	2
SPECIFICATIONS	4
Overview	4
Basic Information	4
Dimensions	4
Speed, Capacities and Weight	4
Accommodations	5
Hull and Deck Information	5
Engine Information	5
PHOTOS	6
Profile 3	6
Interior	6
Port salon looking-forward	6
Salon table leaf	6
Starboard salon looking forward	6
Solitude_Owner's_berth	6
Galley	7
Interior looking aft	7
Head and shower	7
Interior detail	7
Cabinetry detail	8
Interior bulkhead detail	8
Cabin Sole Detail	8
Quarter View	8
Forepeak	8
Retractable anchor	8
Cockpit	9
Cockpit looking aft	9

Cockpit-2	9
Cockpit-3	9
Looking forward under sail	9
Leeward side under sail	9
Stainless hydraulic cylinders	10
Looking aft under sail	10
Rope tail storage	10
Deck-detail	10
Friendship 40 Layout Plans	11
Custom-springline-chocks	11
Cockpit cover	11
CONTACTS	12
Contact details	12
Telephones	12
Office hours	12
Address	12

SPECIFICATIONS

Overview

The Friendship 40 was designed by Ted Fontaine to provide a truly graceful, spirited daysailer that can be easily sailed by one and comfortably accommodate friends and family in her generous cockpit. Relative wide beam, heavier displacement and significant ballast support a powerful sail plan and also ensure a stable and comfortable motion. Her shoal draft of less than four feet allows for docking and anchoring in waters normally off-limits to sailboats. And her interior accommodations can support comfortable overnighting by one couple or a growing family, with a large master centerline berth and two single settee berths.

SOLITUDE was built to very high “superyacht” standards, with exceptional detailing above and below decks, by Austral Marine in New Zealand. She features the most popular options, including in-boom furling, (4) power winches, hydraulic mainsail trim, electric jib furling and bow thruster. Shows extremely well thanks to light summertime use, inside heated storage every year and new or recent hull paint, sails, running rigging, canvas, and batteries. For those seeking a true work of art at the highest level of quality, look no further than SOLITUDE. Most importantly, she is indeed a joy to sail!

Basic Information

Category: Daysailer

Model Year: 2006

Year Built: 2006

Country: United States

Dimensions

LOA: 40' 9" (12.42mm)

LWL: 30' 3" (9.22mm)

Beam: 12.83

Min Draft: 3' 9" (1.14mm)

Speed, Capacities and Weight

Cruise Speed: 6.5 Knots Kts. (7 MPH)

Water Capacity: 57 Gallons

Holding Tank: 20 Gal Gallons

Fuel Capacity: 33 Gal Gallons

Accommodations

Total Cabins: 1

Total Berths: 2

Sleeps: 4

Total Heads: 1

Hull and Deck Information

Hull Material: Composite

Engine Information

Engines: 1

Manufacturer: Yanmar

Engine Type: Inboard

Fuel Type: Diesel

PHOTOS

Profile 3



Interior



Port salon looking-forward



Salon table leaf



Starboard salon looking forward



Solitude_Owner's_berth



Galley

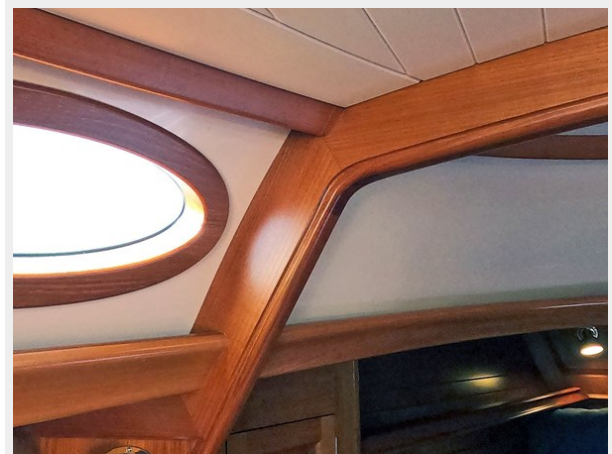
Interior looking aft



Head and shower



Interior detail



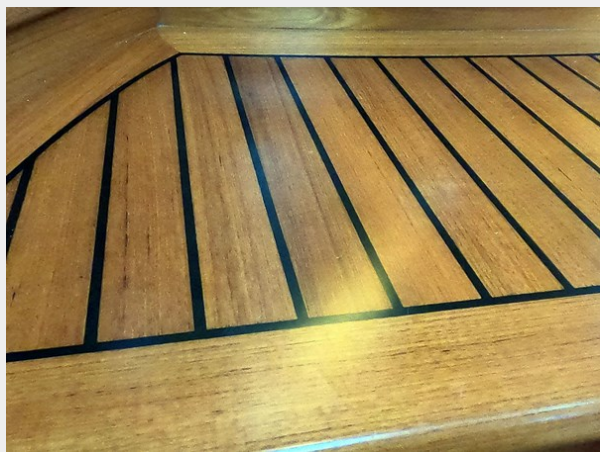
Cabinetry detail



Interior bulkhead detail



Cabin Sole Detail



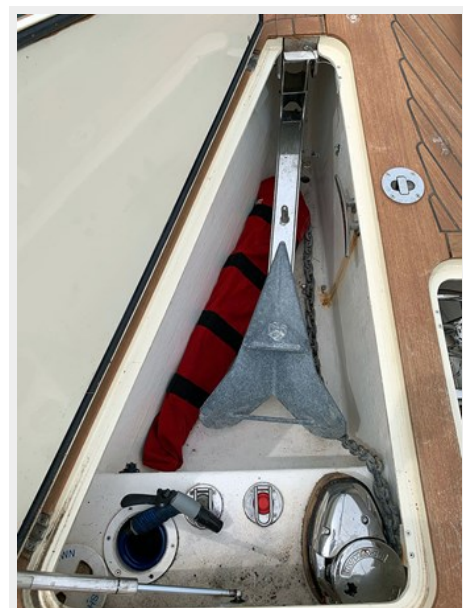
Quarter View



Forepeak



Retractable anchor



Cockpit looking aft



Cockpit



Cockpit-2



Cockpit-3



Looking forward under sail



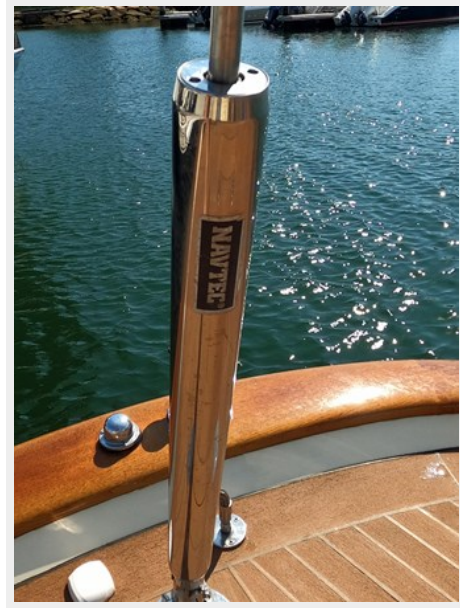
Leeward side under sail



Looking aft under sail



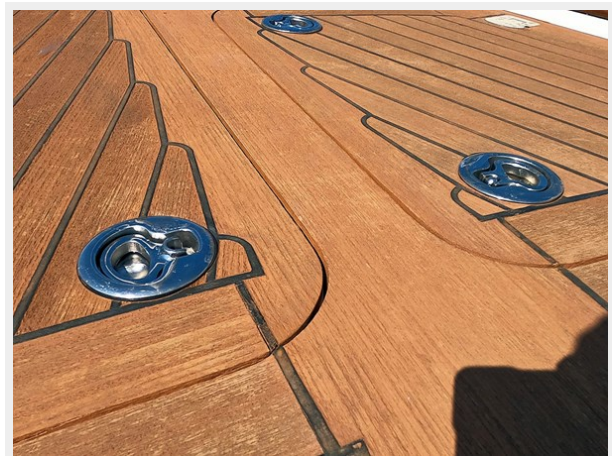
Stainless hydraulic cylinders



Rope tail storage

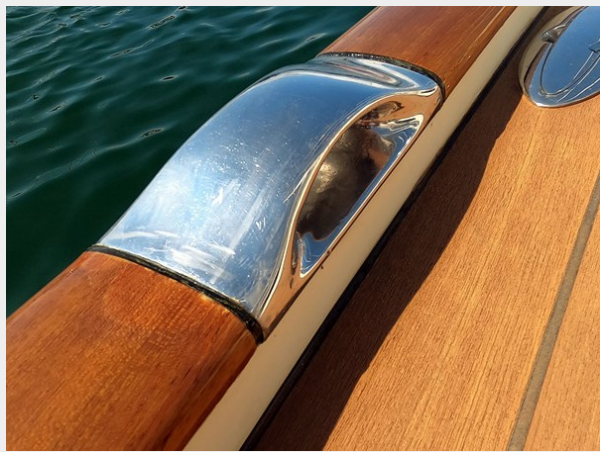


Deck-detail



Friendship 40 Layout Plans

Custom-springline-chocks



Cockpit cover



CONTACTS

Andrey Shestakov, leading yacht broker of the sales department of Shestakov Yacht Sales Inc. Shestakov Yacht Sales Inc., the official representative of the Miami/Fort Lauderdale FL headquarters.

Contact details

Email: andrey@shestakovyachtsales.com

Web: shestakovyachtsales.com/en/

Telephones

USA: +1(954)274-4435

Office hours

Monday – Saturday: **9:00 - 21:00** EDT

Sunday: **closed**

Address



Harbour Towne Marina, 850 NE 3rd St,
STE 213, Dania, FL 33004