

EVERGLOW — SANLORENZO



Builder: SANLORENZO

Year Built: 2013

Model: Motor Yacht

Price: PRICE ON APPLICATION

Location: Italy

LOA: 72' 3" (22mm)

Beam: 18.4

Max Draft: 6' 3" (1.9mm)

Cruise Speed: 23 Knots Kts. (26 MPH)

Max Speed: 28 Knots Kts. (32 MPH)

Our experienced yacht broker, Andrey Shestakov, will help you choose and buy a yacht that best suits your needs **EVERGLOW — SANLORENZO** from our catalogue. Presently, at Shestakov Yacht Sales Inc., we have a wide variety of yachts available on our sale's list. We also work in close contact with all the big yacht manufacturers from all over the world.

If you would like to buy a yacht **EVERGLOW — SANLORENZO** or would like help answering any questions concerning purchasing, selling or chartering a yacht, please call **+1(954)274-4435**

TABLE OF CONTENTS

TABLE OF CONTENTS	2
SPECIFICATIONS	4
Overview	4
Basic Information	4
Dimensions	4
Speed, Capacities and Weight	4
Accommodations	4
Hull and Deck Information	5
Engine Information	5
PHOTOS	6
PHOTO-2021-08-26-15-21-27 (1)	6
PHOTO-2021-08-26-15-25-20	6
IMG_5474	6
IMG_5472	6
IMG_5518	7
PHOTO-2021-08-26-15-21-27 (8)	7
PHOTO-2021-08-26-15-21-27 (6)	7
PHOTO-2021-08-26-15-24-22	7
PHOTO-2021-08-26-15-22-05 (15)	7
PHOTO-2021-08-26-15-21-26	7
PHOTO-2021-08-26-15-22-34 (24)	8
PHOTO-2021-08-26-15-22-05 (14)	8
PHOTO-2021-08-26-15-22-34 (19)	8
PHOTO-2021-08-26-15-23-50	8
PHOTO-2021-08-26-15-23-01 (31)	9
PHOTO-2021-08-26-15-23-01 (33)	9
PHOTO-2021-08-26-15-23-01 (29)	9
IMG_5496	9

PHOTO-2021-08-26-15-23-01 (27)	10
PHOTO-2021-08-26-15-23-50 (43)	10
IMG_5529	10
IMG_5523	10
IMG_5531	10
IMG_5534	10
Fos-San-lorenzo-72-layout	11
IMG_5539	11
CONTACTS	12
Contact details	12
Telephones	12
Office hours	12
Address	12

SPECIFICATIONS

Overview

N/A

Basic Information

Category: Motor Yacht

Model Year: 2013

Year Built: 2013

Refit Type: New Engine room (engines, generators, systems 2021), new paint

Country: Italy

Dimensions

LOA: 72' 3" (22mm)

Beam: 18.4

Max Draft: 6' 3" (1.9mm)

Speed, Capacities and Weight

Cruise Speed: 23 Knots Kts. (26 MPH)

Max Speed: 28 Knots Kts. (32 MPH)

Water Capacity: 1500 Gallons

Fuel Capacity: 1347.28 Gal Gallons

Accommodations

Total Cabins: 4

Total Berths: 6

Sleeps: 8

Total Heads: 4

Crew Cabin: 2

Crew Berths: 2

Crew Heads: 1

Hull and Deck Information

Hull Material: Fiberglass

Hull Configuration: Planing

Engine Information

Engines: 2

Manufacturer: MAN

Engine Type: Inboard

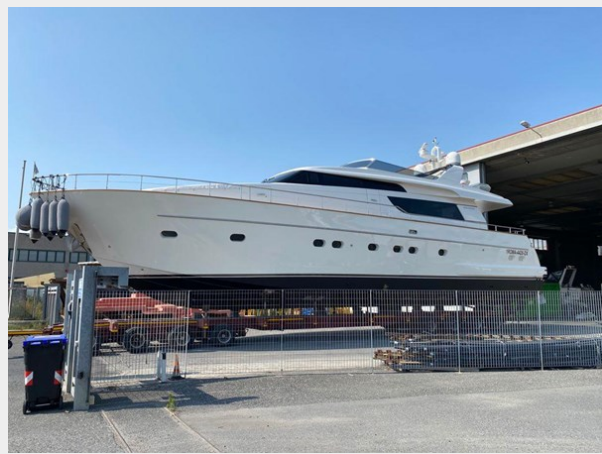
Fuel Type: Diesel

PHOTOS

PHOTO-2021-08-26-15-21-27 (1)



PHOTO-2021-08-26-15-25-20



IMG_5474



IMG_5472



IMG_5518



PHOTO-2021-08-26-15-21-27 (8)



PHOTO-2021-08-26-15-21-27 (6)



PHOTO-2021-08-26-15-24-22



PHOTO-2021-08-26-15-22-05 (15)

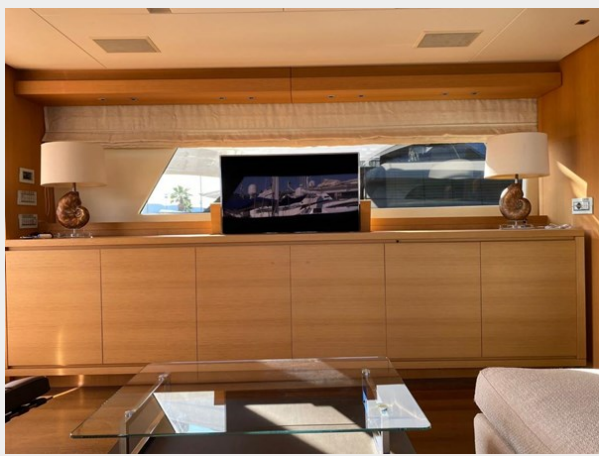


PHOTO-2021-08-26-15-21-26



PHOTO-2021-08-26-15-22-34 (24)



PHOTO-2021-08-26-15-22-05 (14)



PHOTO-2021-08-26-15-22-34 (19)



PHOTO-2021-08-26-15-23-50



PHOTO-2021-08-26-15-23-01 (31)



PHOTO-2021-08-26-15-23-01 (33)



PHOTO-2021-08-26-15-23-01 (29)

IMG_5496



PHOTO-2021-08-26-15-23-01 (27)



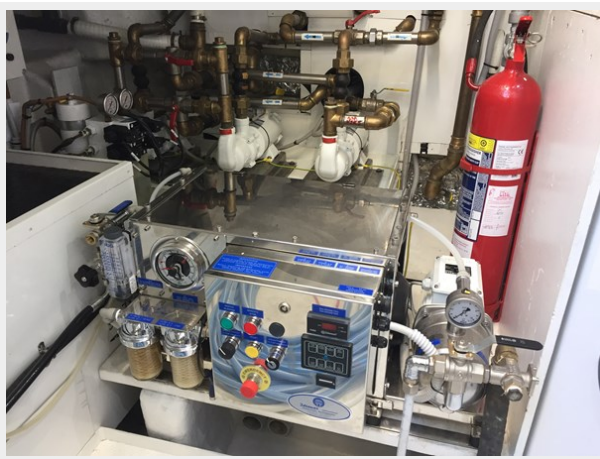
PHOTO-2021-08-26-15-23-50 (43)



IMG_5529



IMG_5523



IMG_5531



IMG_5534



IMG_5539



Fos-San-lorenzo-72-layout



CONTACTS

Andrey Shestakov, leading yacht broker of the sales department of Shestakov Yacht Sales Inc. Shestakov Yacht Sales Inc., the official representative of the Miami/Fort Lauderdale FL headquarters.

Contact details

Email: andrey@shestakovyachtsales.com

Web: shestakovyachtsales.com/en/

Telephones

USA: +1(954)274-4435

Office hours

Monday – Saturday: **9:00 - 21:00** EDT

Sunday: **closed**

Address



Harbour Towne Marina, 850 NE 3rd St,
STE 213, Dania, FL 33004