

SLO-M'OCEAN — SENATOR



Builder: SENATOR

LOA: 34' 4" (10.46m)

Year Built: 1987

Beam: 12

Model: Trawler Yacht

Price: PRICE ON APPLICATION

Location: United States

Our experienced yacht broker, Andrey Shestakov, will help you choose and buy a yacht that best suits your needs **SLO-M'OCEAN — SENATOR** from our catalogue. Presently, at Shestakov Yacht Sales Inc., we have a wide variety of yachts available on our sale's list. We also work in close contact with all the big yacht manufacturers from all over the world.

If you would like to buy a yacht **SLO-M'OCEAN — SENATOR** or would like help answering any questions concerning purchasing, selling or chartering a yacht, please call **+1(954)274-4435**

TABLE OF CONTENTS

TABLE OF CONTENTS	2
SPECIFICATIONS	5
Overview	5
Basic Information	5
Dimensions	5
Speed, Capacities and Weight	5
Accommodations	6
Hull and Deck Information	6
Engine Information	6
PHOTOS	7
2	7
3	7
4	7
5	7
6	7
7	7
8	8
9	8
10	8
11	8
12	8
13	8
14	9
15	9
16	9
17	9
18	9
19	9

20	10
21	10
22	10
23	10
24	10
25	10
26	11
27	11
28	11
29	11
30	11
31	11
32	12
33	12
34	12
35	12
36	12
37	12
38	13
39	13
40	13
41	13
42	13
43	13
44	14
45	14
46	14
47	14
48	14

49	14
50	15
51	15
CONTACTS	16
Contact details	16
Telephones	16
Office hours	16
Address	16

SPECIFICATIONS

Overview

New Bottom Job 3-2022. The bottom was sand blasted. A new barrier boat, and bottom job has been completed. Updated Survey is also available.

Slo - M'Ocean offers great 2 stateroom 2 head layout with a full galley and a spacious salon with a lower helm station.

The aft sun deck has a ton of room, and the flybridge has additional seating. This boat could be used as a live aboard or cruiser. This would be a affordable boat for the Great Loop.

She is powered by reliable Yanmar Diesels. The boat also features a low hour Onan Marine Generator.

Check out the FULL SPECS for more details and give us a call today to set up a time to come see her!

Basic Information

Category: Trawler Yacht

Sub Category: Aft Cabin

Model Year: 1987

Year Built: 1987

Country: United States

Dimensions

LOA: 34' 4" (10.46mm)

Beam: 12

Speed, Capacities and Weight

Water Capacity: 80 Gallons

Holding Tank: 40 Gal Gallons

Fuel Capacity: 300 Gal Gallons

Accommodations

Total Cabins: 2

Total Heads: 2

Hull and Deck Information

Hull Material: Fiberglass

Engine Information

Engines: 2

Manufacturer: Yanmar

Engine Type: Inboard

Fuel Type: Diesel

PHOTOS

2



3



4



5



6



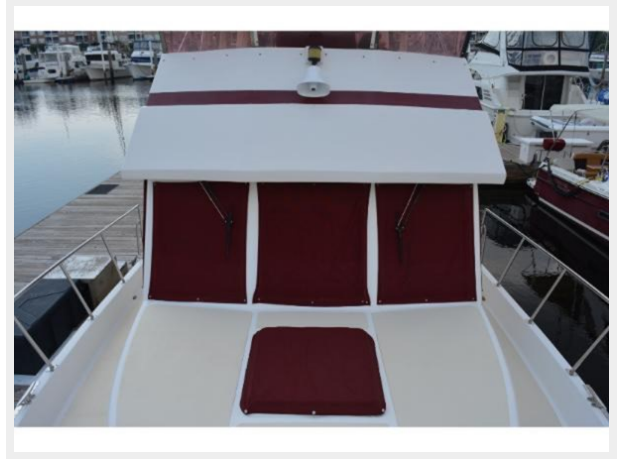
7



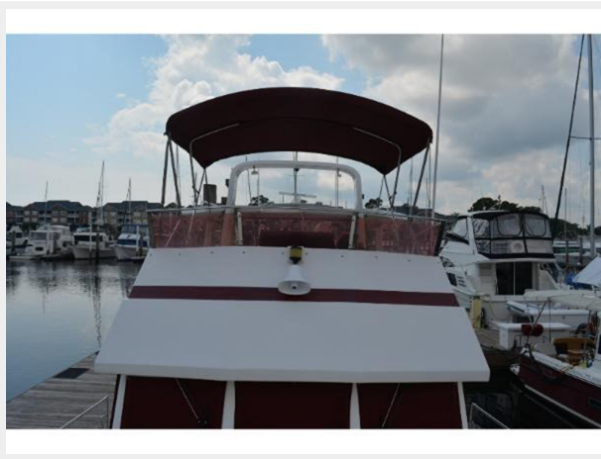
8



9



10



11



12



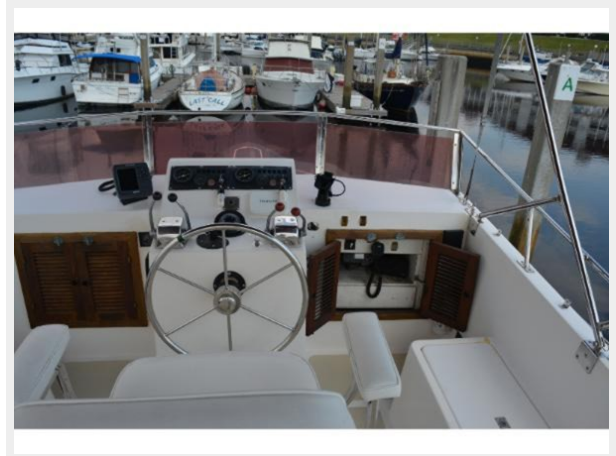
13



14



15



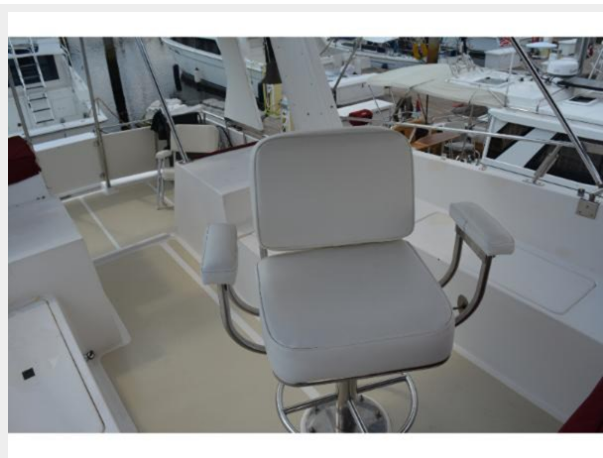
16



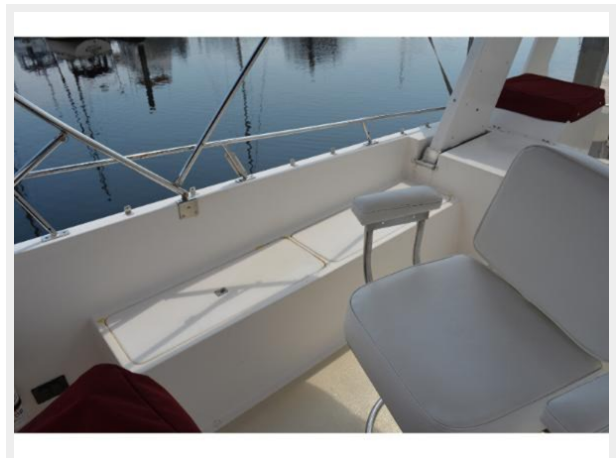
17



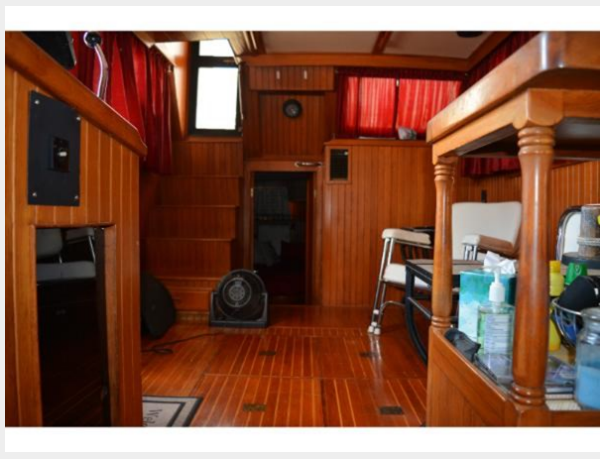
18



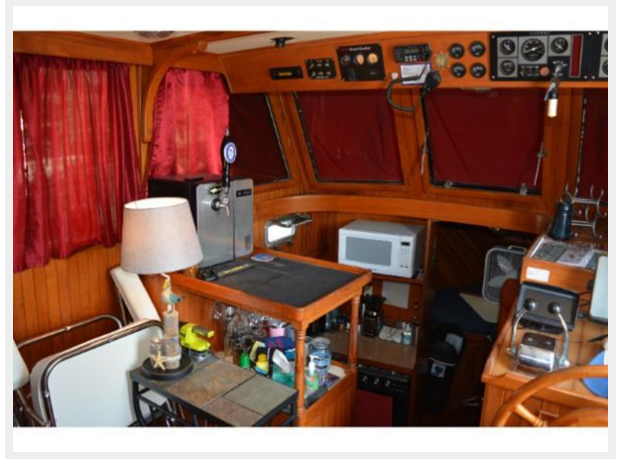
19



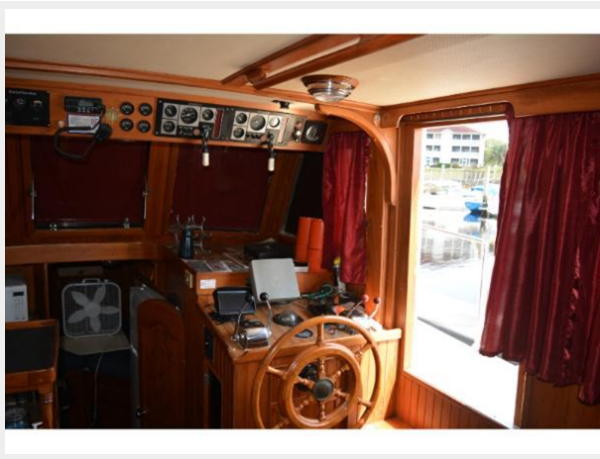
20



21



22



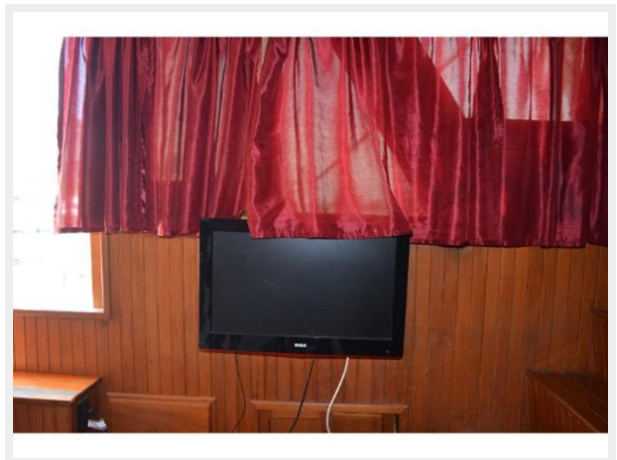
23



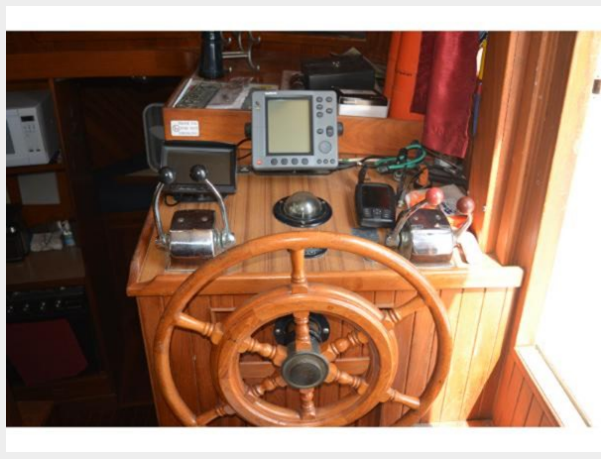
24



25



26



27



28



29



30



31



32



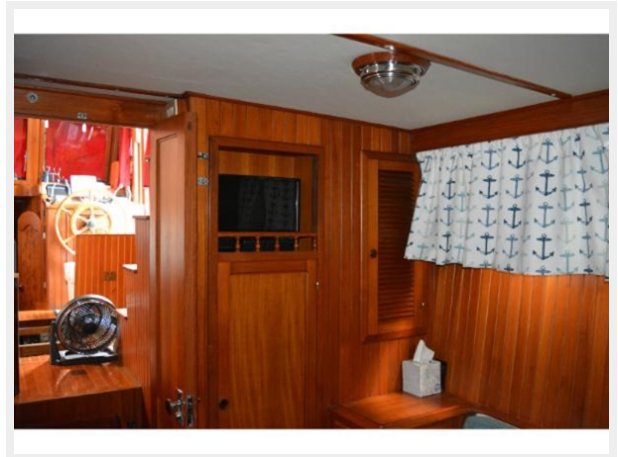
33



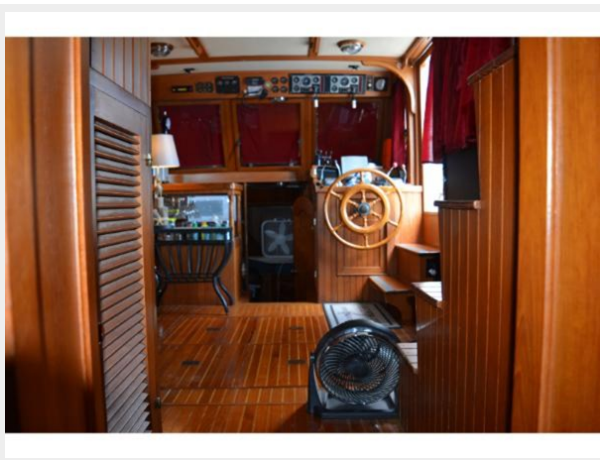
34



35



36



37



38



39



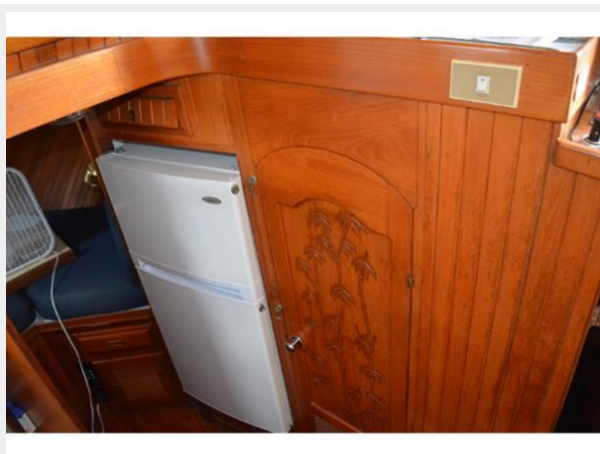
40



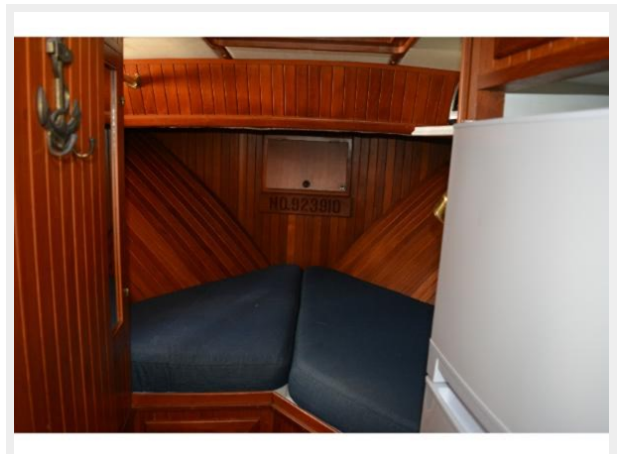
41



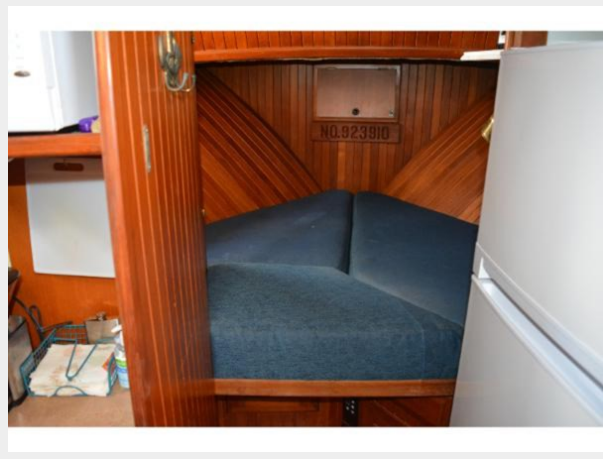
42



43



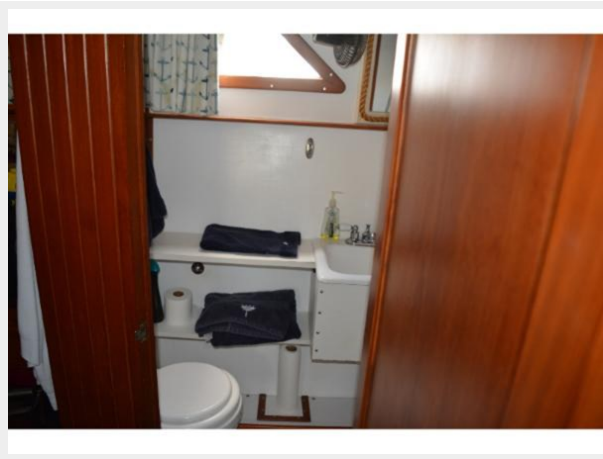
44



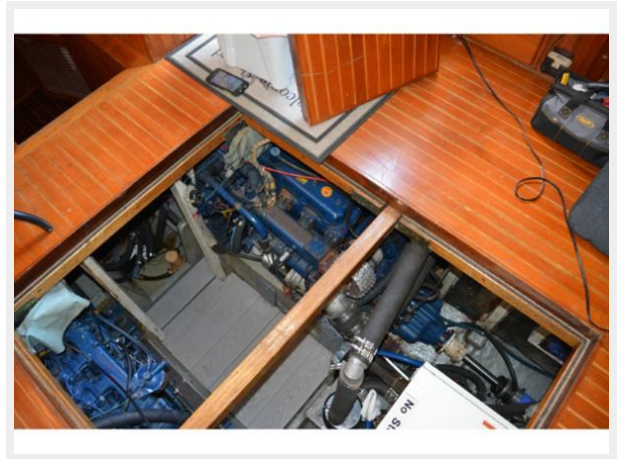
45



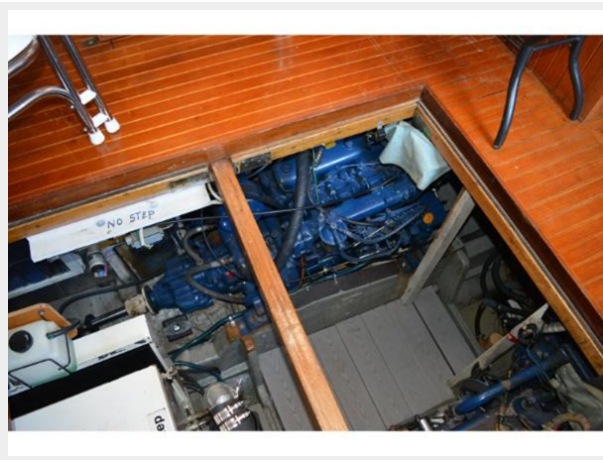
46



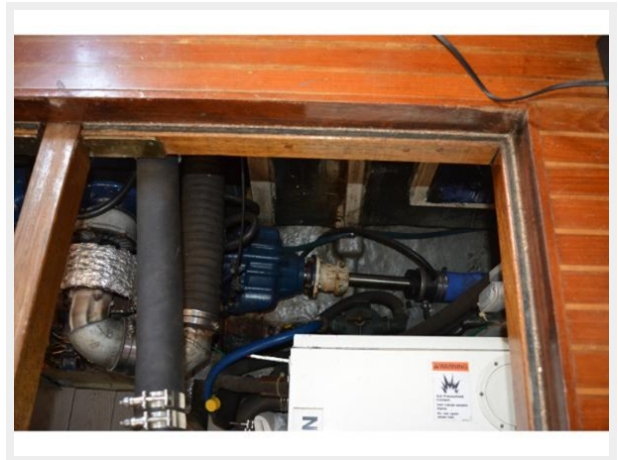
47



48



49



50



51



CONTACTS

Andrey Shestakov, leading yacht broker of the sales department of Shestakov Yacht Sales Inc. Shestakov Yacht Sales Inc., the official representative of the Miami/Fort Lauderdale FL headquarters.

Contact details

Email: andrey@shestakovyachtsales.com

Web: shestakovyachtsales.com/en/

Telephones

USA: +1(954)274-4435

Office hours

Monday – Saturday: **9:00 - 21:00** EDT

Sunday: **closed**

Address



Harbour Towne Marina, 850 NE 3rd St,
STE 213, Dania, FL 33004