

# HEESEN 50M ALUMINIUM YN 20350 PROJECT — HEESEN YACHTS



**Builder:** HEESEN YACHTS

**Year Built:** 2024

**Model:** Motor Yacht

**Price:** PRICE ON APPLICATION

**Location:** Netherlands

**LOA:** 164' 1" (50mm)

**Beam:** 29.52

**Min Draft:** 7' 1" (2.15mm)

**Max Draft:** 7' 1" (2.15mm)

**Max Speed:** 23 Knots Kts. (26 MPH)

Our experienced yacht broker, Andrey Shestakov, will help you choose and buy a yacht that best suits your needs **Heesen 50m Aluminium YN 20350 Project Jade — HEESEN YACHTS** from our catalogue. Presently, at **Shestakov Yacht Sales Inc.**, we have a wide variety of yachts available on our sale's list. We also work in close contact with all the big yacht manufacturers from all over the world.

If you would like to buy a yacht **Heesen 50m Aluminium YN 20350 Project Jade — HEESEN YACHTS** or would like help answering any questions concerning purchasing, selling or chartering a yacht, please call **+1(954)274-4435**

---

# TABLE OF CONTENTS

---

TABLE OF CONTENTS	2
SPECIFICATIONS	3
Overview	3
Basic Information	3
Dimensions	3
Speed, Capacities and Weight	3
Accommodations	4
Hull and Deck Information	4
Engine Information	4
PHOTOS	5
Main saloon	5
Main saloon dining	6
Sky lounge	6
Sky lounge	6
Owners stateroom	6
Guest suite	6
Guest bathroom	6
Beach club	6
CONTACTS	7
Contact details	7
Telephones	7
Office hours	7
Address	7

# SPECIFICATIONS

---

## Overview

---

At 50 metres and below 500 GT, Jade is an all-aluminium, fast-cruising yacht powered by green ocean engines. Heesen's 50-metre fast-cruising class is the first of its kind below 500 GT to comply with IMO Tier-III regulations. A curvy, sporty exterior design by Omega Architects complements Jade's performance and crisp design features. Heesen's optimised, low-drag hull design with a reduced transom depth allows for a shallow shaft angle. This makes Jade comfortable in rough seas yet perfect for cruising shallow waters. The ultra-efficient hull shape delivers on engineering and adventure, meaning Jade is ideal for both island hopping and longer passages.

## Basic Information

---

**Category:** Motor Yacht

**Model Year:** 2024

**Year Built:** 2024

**Country:** Netherlands

## Dimensions

---

**LOA:** 164' 1" (50mm)

**Beam:** 29.52

**Min Draft:** 7' 1" (2.15mm)

**Max Draft:** 7' 1" (2.15mm)

## Speed, Capacities and Weight

---

**Max Speed:** 23 Knots Kts. (26 MPH)

**Gross Tonnage:** 499 Pounds

**Water Capacity:** 16000 Gallons

**Fuel Capacity:** 14265.29 Gal Gallons

---

## Accommodations

---

**Total Cabins:** 5

**Total Berths:** 7

**Sleeps:** 12

**Total Heads:** 9

**Crew Cabin:** 9

**Crew Berths:** 9

**Crew Heads:** 5

---

## Hull and Deck Information

---

**Hull Material:** Aluminum

**Deck Material:** Teak

**Hull Configuration:** Semi-Displacement

**Hull Color:** White

**Hull Designer:** Heesen Yachts

**Exterior Designer:** Omega Architects

**Interior Designer:** Cristiano Gatto

---

## Engine Information

---

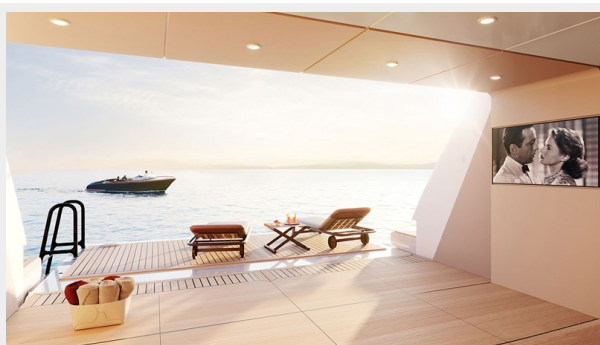
**Engines:** 2

**Manufacturer:** MTU

**Engine Type:** Inboard

**Fuel Type:** Diesel

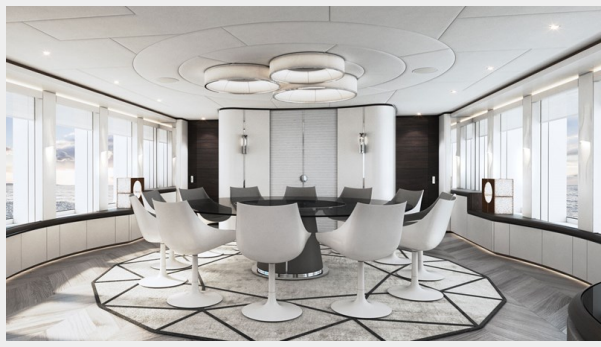
# PHOTOS



## Main saloon



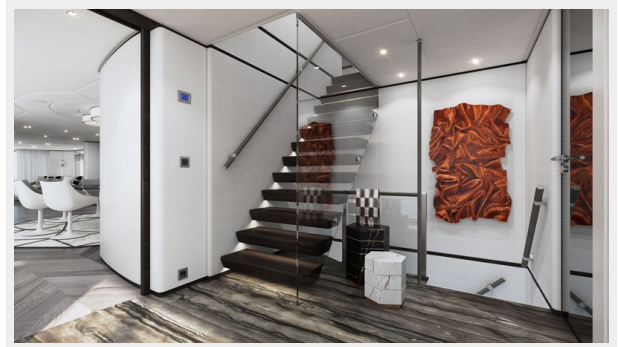
**Main saloon dining**



**Sky lounge**



**Sky lounge**



**Owners stateroom**



**Guest suite**



**Guest bathroom**



**Beach club**



# CONTACTS

---

Andrey Shestakov, leading yacht broker of the sales department of Shestakov Yacht Sales Inc. Shestakov Yacht Sales Inc., the official representative of the Miami/Fort Lauderdale FL headquarters.

## Contact details

---

Email: [andrey@shestakovyachtsales.com](mailto:andrey@shestakovyachtsales.com)

Web: [shestakovyachtsales.com/en/](http://shestakovyachtsales.com/en/)

## Telephones

---

USA: +1(954)274-4435

## Office hours

---

Monday – Saturday: **9:00 - 21:00** EDT

Sunday: **closed**

## Address

---



Harbour Towne Marina, 850 NE 3rd St,  
STE 213, Dania, FL 33004