

AISA — GALEON



Builder: GALEON

Model: Motor Yacht

LOA: 80' 5" (24.5mm)

Max Draft: 4' 4" (1.3mm)

Max Speed: 30 Knots Kts. (35 MPH)

Our experienced yacht broker, Andrey Shestakov, will help you choose and buy a yacht that best suits your needs **AISA — GALEON** from **our catalogue**. Presently, at **Shestakov Yacht Sales Inc.**, we have a wide variety of yachts available on **our sale's list**. We also work in close contact with all the big **yacht manufacturers** from all over the world.

If you would like to buy a yacht **AISA — GALEON** or would like help answering any questions concerning purchasing, selling or chartering a yacht, please call **+1(954)274-4435**

TABLE OF CONTENTS

TABLE OF CONTENTS	2
SPECIFICATIONS	4
Overview	4
Basic Information	4
Dimensions	4
Speed, Capacities and Weight	5
Accommodations	5
Hull and Deck Information	5
Engine Information	5
PHOTOS	6
2	6
3	6
4	6
5	6
6	6
7	6
8	7
9	7
10	7
11	7
12	7
13	7
14	7
15	7
16	8
17	8
CONTACTS	9
Contact details	9

Telephones	9
Office hours	9
Address	9

SPECIFICATIONS

Overview

AISA is the 24.5m Galeon 780 Crystal, built in 2012. The stunning exterior created by Tony Castro Naval Architects offers an abundance of space on all three decks. The lower deck layout includes 4 cabins with ensuite bathrooms.

The flybridge rest area allows for plenty of additional options, such as comfortable sun loungers, a bar, grill and dining area. The cockpit, which also houses the dining area, provides easy access to the forward seating area, which can be protected by an awning if necessary.

The salon has two main areas, a relaxation area with sofa, bar and entertainment system and a dining area for 8 guests.

The lower deck layout can accommodate 8 guests in 4 spacious cabins. All four cabins have en-suite bathrooms for comfort and privacy of all guests.

AISA is powered by twin MAN V12-1650 engines with 1800 engine hours and reaches a maximum speed of 30 knots.

Basic Information

Category: Motor Yacht

Model Year: 2012

Dimensions

LOA: 80' 5" (24.5mm)

Max Draft: 4' 4" (1.3mm)

Speed, Capacities and Weight

Max Speed: 30 Knots Kts. (35 MPH)

Water Capacity: 1800 Gallons

Fuel Capacity: 1452.95 Gal Gallons

Accommodations

Total Cabins: 4

Total Berths: 8

Hull and Deck Information

Hull Material: Fiberglass

Engine Information

Engines: 2

Manufacturer: MAN

PHOTOS

2



3



4



5



6



7



8



9



10



11



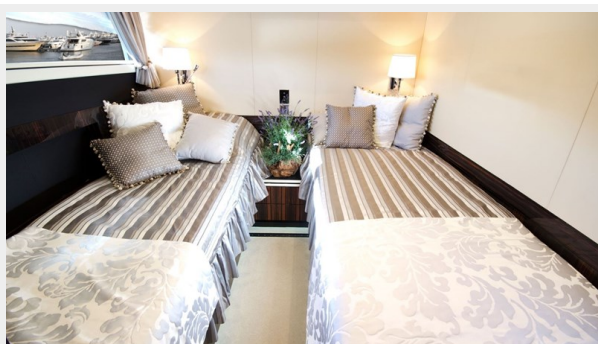
12



13



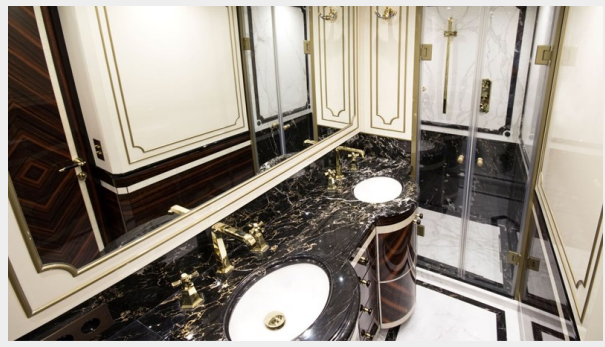
14



15



16



17



CONTACTS

Andrey Shestakov, leading yacht broker of the sales department of Shestakov Yacht Sales Inc. Shestakov Yacht Sales Inc., the official representative of the Miami/Fort Lauderdale FL headquarters.

Contact details

Email: **andrey@shestakovyachtsales.com**

Web: shestakovyachtsales.com/en/

Telephones

USA: **+1(954)274-4435**

Office hours

Monday – Saturday: **9:00 - 21:00** EDT

Sunday: **closed**

Address



Harbour Towne Marina, 850 NE 3rd St, STE 213, Dania, FL 33004