

## SHENANIGANS — CHRIS-CRAFT



**Builder:** CHRIS-CRAFT

**Year Built:** 1985

**Model:** Motor Yacht

**Price:** PRICE ON APPLICATION

**Location:** United States

**LOA:** 42' (12.8mm)

**Beam:** 14.75

**Min Draft:** 3' 6" (1.07mm)

**Max Draft:** 3' 6" (1.07mm)

**Cruise Speed:** 9 Knots Kts. (10 MPH)

**Max Speed:** 20 Knots Kts. (23 MPH)

Our experienced yacht broker, Andrey Shestakov, will help you choose and buy a yacht that best suits your needs **Shenanigans — CHRIS-CRAFT** from **our catalogue**. Presently, at **Shestakov Yacht Sales Inc.**, we have a wide variety of yachts available on **our sale's list**. We also work in close contact with all the big **yacht manufacturers** from all over the world.

If you would like to buy a yacht **Shenanigans — CHRIS-CRAFT** or would like help answering any questions concerning purchasing, selling or chartering a yacht, please call **+1(954)274-4435**

# TABLE OF CONTENTS

TABLE OF CONTENTS	2
SPECIFICATIONS	6
Overview	6
Basic Information	6
Dimensions	6
Speed, Capacities and Weight	6
Accommodations	6
Hull and Deck Information	7
Engine Information	7
PHOTOS	8
0_2782887_	8
2_2782887_	8
3_2782887_	8
4_2782887_	8
5_2782887_	9
6_2782887_	9
7_2782887_	9
8_2782887_	9
9_2782887_	9
10_2782887_	9
11_2782887_	10
12_2782887_	10
13_2782887_	10
14_2782887_	10
15_2782887_	10
16_2782887_	10
17_2782887_	11
18_2782887_	11

---

19_2782887_	11
20_2782887_	11
21_2782887_	11
22_2782887_	11
23_2782887_	12
24_2782887_	12
25_2782887_	12
26_2782887_	12
27_2782887_	12
28_2782887_	12
29_2782887_	13
30_2782887_	13
31_2782887_	13
32_2782887_	13
33_2782887_	13
34_2782887_	13
35_2782887_	14
36_2782887_	14
37_2782887_	14
38_2782887_	14
39_2782887_	14
40_2782887_	14
41_2782887_	15
42_2782887_	15
43_2782887_	15
44_2782887_	15
45_2782887_	15
46_2782887_	15
47_2782887_	16

---

---

48_2782887_	16
49_2782887_	16
50_2782887_	16
51_2782887_	16
52_2782887_	16
53_2782887_	17
54_2782887_	17
55_2782887_	17
56_2782887_	17
57_2782887_	17
58_2782887_	17
59_2782887_	18
60_2782887_	18
61_2782887_	18
62_2782887_	18
63_2782887_	18
64_2782887_	18
66_2782887_	19
65_2782887_	19
67_2782887_	19
68_2782887_	19
69_2782887_	19
70_2782887_	19
71_2782887_	20
72_2782887_	20
73_2782887_	20
74_2782887_	20
75_2782887_	20
76_2782887_	20

---

77_2782887_	21
78_2782887_	21
79_2782887_	21
80_2782887_	21
81_2782887_	21
82_2782887_	21
83_2782887_	22
84_2782887_	22
85_2782887_	22
86_2782887_	22
87_2782887_	23
88_2782887_	23
89_2782887_	23
90_2782887_	23
91_2782887_	23
92_2782887_	23
93_2782887_	24
94_2782887_	24
95_2782887_	24
96_2782887_	24
97_2782887_	24
98_2782887_	24
CONTACTS	25
Contact details	25
Telephones	25
Office hours	25
Address	25

---

# SPECIFICATIONS

---

## Overview

---

Enjoy spaciousness, open interior, comfortable motor yacht, the Chris Craft 425 Catalina is castle and kingdom afloat. Topside accommodations include an expansive aft deck with hardtop, plus a large flybridge – allowing for ample seating and entertaining areas on both levels. Down below, two very private staterooms, two heads, a large salon, roomy dinette and full-featured galley provide nearly every comfort of home. Head room aplenty... Forward Cabin 6'2", Galley 10'5". Salon 6'3", and Aft Cabin 6'1". Low engine hours on the Marine Power, 7.4 Vortec rebuilds – Starboard 2002 (1457) and Port 2019 (approx. 125 hrs gauge incorrect at 1480). Gas/Petrol engines.

## Basic Information

---

**Category:** Motor Yacht

**Model Year:** 1985

**Year Built:** 1985

**Country:** United States

## Dimensions

---

**LOA:** 42' (12.8mm)

**Beam:** 14.75

**Min Draft:** 3' 6" (1.07mm)

**Max Draft:** 3' 6" (1.07mm)

## Speed, Capacities and Weight

---

**Cruise Speed:** 9 Knots Kts. (10 MPH)

**Max Speed:** 20 Knots Kts. (23 MPH)

**Water Capacity:** 160 Gallons

**Holding Tank:** 35 Gal Gallons

**Fuel Capacity:** 400 Gal Gallons

## Accommodations

---

**Total Cabins:** 2

**Total Heads:** 2

---

## Hull and Deck Information

---

**Hull Material:** Fiberglass

## Engine Information

---

**Engines:** 2

**Manufacturer:** Marine Power

**Engine Type:** Inboard

**Fuel Type:** Gas/Petrol

# PHOTOS

0\_2782887\_



2\_2782887\_



3\_2782887\_



4\_2782887\_

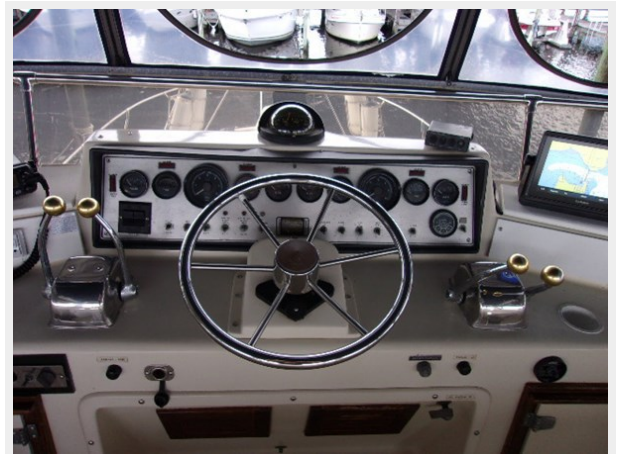




5\_2782887\_



6\_2782887\_



7\_2782887\_



8\_2782887\_



9\_2782887\_



10\_2782887\_





11\_2782887\_



12\_2782887\_



13\_2782887\_



14\_2782887\_



15\_2782887\_



16\_2782887\_





17\_2782887\_



18\_2782887\_



19\_2782887\_



20\_2782887\_



21\_2782887\_



22\_2782887\_

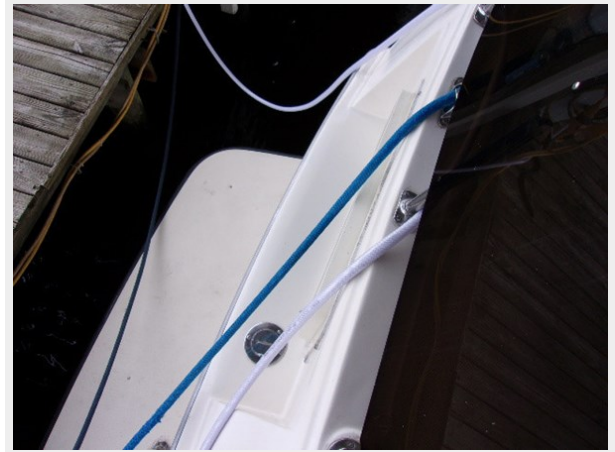




23\_2782887\_



24\_2782887\_



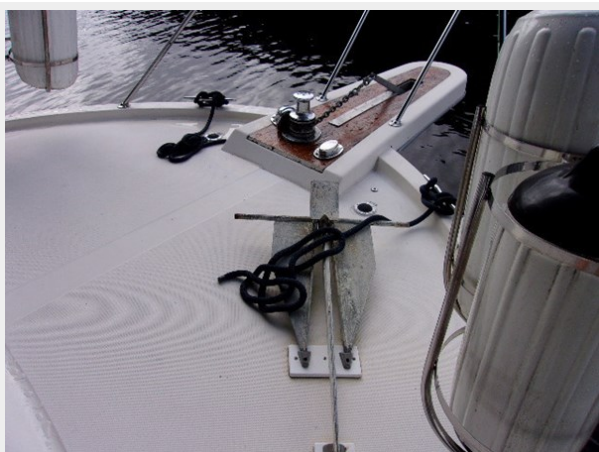
25\_2782887\_



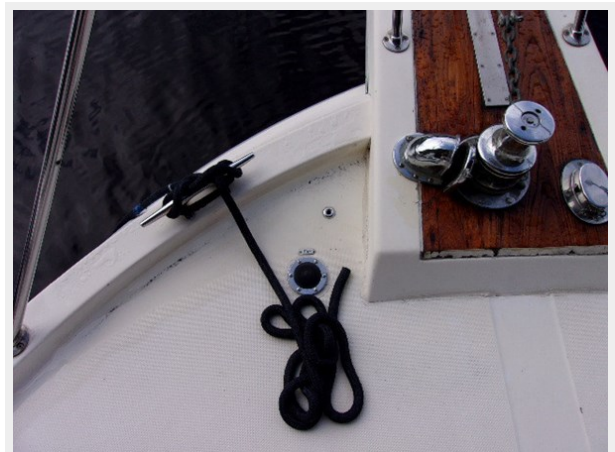
26\_2782887\_



27\_2782887\_



28\_2782887\_



29\_2782887\_



30\_2782887\_



31\_2782887\_



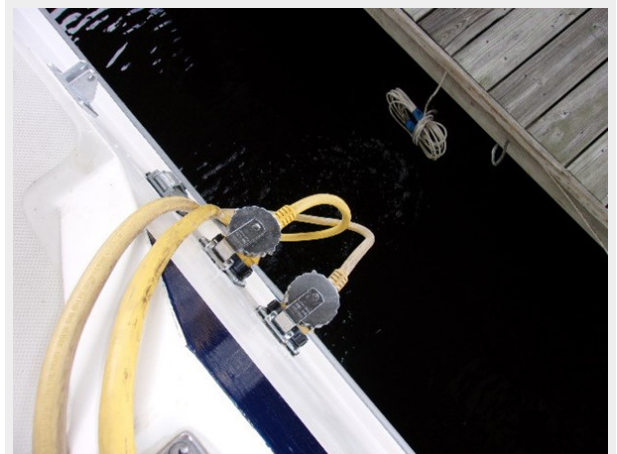
32\_2782887\_



33\_2782887\_



34\_2782887\_





35\_2782887\_



36\_2782887\_



37\_2782887\_



38\_2782887\_



39\_2782887\_



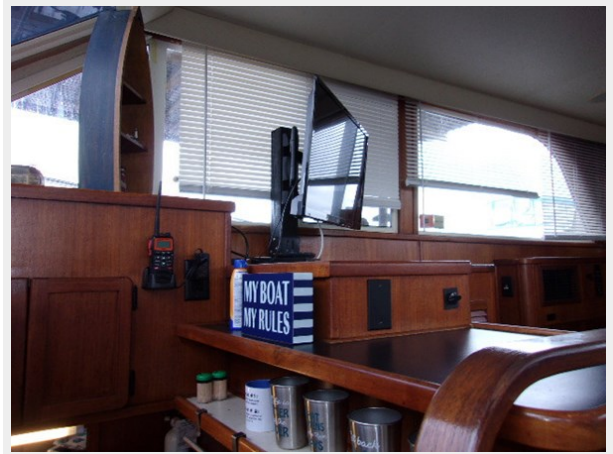
40\_2782887\_



41\_2782887\_



42\_2782887\_



43\_2782887\_



44\_2782887\_



45\_2782887\_



46\_2782887\_





47\_2782887\_



48\_2782887\_



49\_2782887\_



50\_2782887\_



51\_2782887\_



52\_2782887\_





53\_2782887\_



54\_2782887\_



55\_2782887\_



56\_2782887\_



57\_2782887\_



58\_2782887\_



59\_2782887\_



60\_2782887\_



61\_2782887\_



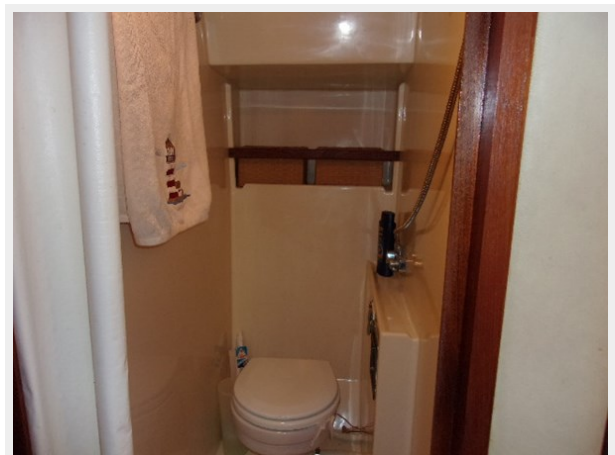
62\_2782887\_



63\_2782887\_



64\_2782887\_





65\_2782887\_



66\_2782887\_



67\_2782887\_



68\_2782887\_



69\_2782887\_



70\_2782887\_



71\_2782887\_



72\_2782887\_



73\_2782887\_



74\_2782887\_



75\_2782887\_



76\_2782887\_





77\_2782887\_



78\_2782887\_



79\_2782887\_



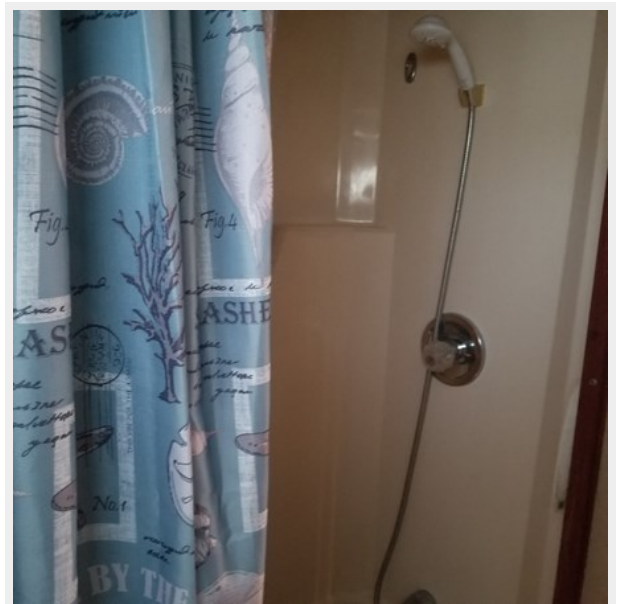
80\_2782887\_



81\_2782887\_



82\_2782887\_



83\_2782887\_



84\_2782887\_



85\_2782887\_



86\_2782887\_





87\_2782887\_



88\_2782887\_



89\_2782887\_



90\_2782887\_



91\_2782887\_



92\_2782887\_





93\_2782887\_



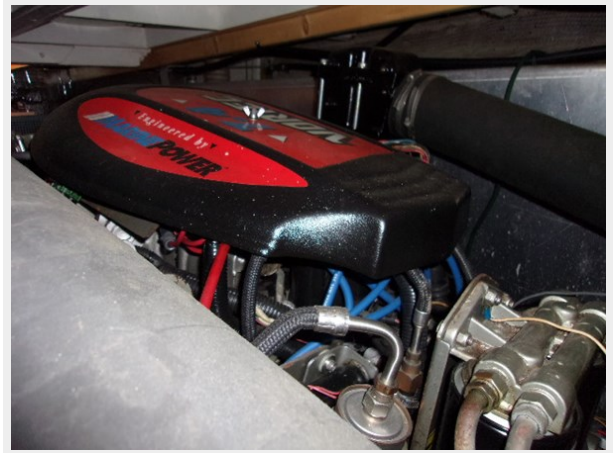
94\_2782887\_



95\_2782887\_



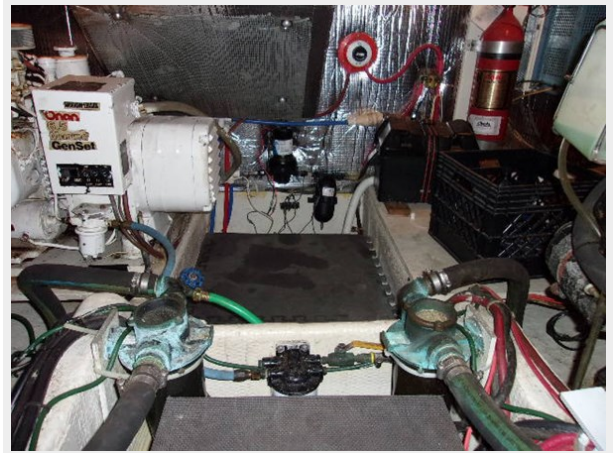
96\_2782887\_



97\_2782887\_



98\_2782887\_





# CONTACTS

---

Andrey Shestakov, leading yacht broker of the sales department of Shestakov Yacht Sales Inc. Shestakov Yacht Sales Inc., the official representative of the Miami/Fort Lauderdale FL headquarters.

## Contact details

---

Email: **andrey@shestakovyachtsales.com**

Web: [shestakovyachtsales.com/en/](http://shestakovyachtsales.com/en/)

## Telephones

---

USA: **+1(954)274-4435**

## Office hours

---

Monday – Saturday: **9:00 - 21:00** EDT

Sunday: **closed**

## Address

---



Harbour Towne Marina, 850 NE 3rd St, STE 213, Dania, FL 33004