

# TROY EXPLORER — TANSU YACHTS



**Builder:** TANSU YACHTS

**Year Built:** 1998

**Model:** Motor Yacht

**Price:** PRICE ON APPLICATION

**Location:** Turkey

**LOA:** 77' 6" (23.6mm)

**Beam:** 20.01

**Min Draft:** 8' 11" (2.7mm)

**Max Draft:** 8' 11" (2.7mm)

**Cruise Speed:** 10 Knots Kts. (12 MPH)

**Max Speed:** 12 Knots Kts. (14 MPH)

Our experienced yacht broker, Andrey Shestakov, will help you choose and buy a yacht that best suits your needs **TROY EXPLORER — TANSU YACHTS** from our catalogue. Presently, at Shestakov Yacht Sales Inc., we have a wide variety of yachts available on our sale's list. We also work in close contact with all the big yacht manufacturers from all over the world.

If you would like to buy a yacht **TROY EXPLORER — TANSU YACHTS** or would like help answering any questions concerning purchasing, selling or chartering a yacht, please call **+1(954)274-4435**

---

# TABLE OF CONTENTS

---

TABLE OF CONTENTS	2
SPECIFICATIONS	4
Overview	4
Basic Information	4
Dimensions	4
Speed, Capacities and Weight	4
Accommodations	4
Hull and Deck Information	5
Engine Information	5
PHOTOS	6
15965.1	6
15965.2	6
15965.3	6
15965.4	6
15965.5	6
15965.6	6
15965.7	7
15965.8	7
15965.9	7
15965.10	7
15965.11	7
15965.12	7
15965.13	8
15965.14	8
15965.15	8
15965.16	8
CONTACTS	9
Contact details	9

---

---

Telephones	9
Office hours	9
Address	9

---

# SPECIFICATIONS

---

## Overview

---

N/A

## Basic Information

---

**Category:** Motor Yacht

**Sub Category:** Displacement

**Model Year:** 1998

**Year Built:** 1998

**Country:** Turkey

## Dimensions

---

**LOA:** 77' 6" (23.6mm)

**Beam:** 20.01

**Min Draft:** 8' 11" (2.7mm)

**Max Draft:** 8' 11" (2.7mm)

## Speed, Capacities and Weight

---

**Cruise Speed:** 10 Knots Kts. (12 MPH)

**Cruise Speed Range:** 2000

**Max Speed:** 12 Knots Kts. (14 MPH)

**Water Capacity:** 4000 Gallons

**Fuel Capacity:** 2562.47 Gal Gallons

## Accommodations

---

**Total Cabins:** 4

**Total Berths:** 9

**Sleeps:** 9

**Crew Berths:** 3

---

## Hull and Deck Information

---

**Hull Material:** Cold Molded Mahogany

**Deck Material:** Teak

**Hull Designer:** TANSU YACHTS

**Exterior Designer:** TANSU YACHTS

**Interior Designer:** TANSU YACHTS

---

## Engine Information

---

**Engines:** 2

**Manufacturer:** MAN

**Engine Type:** Inboard

**Fuel Type:** Diesel

# PHOTOS

15965.1



15965.2



15965.3



15965.4



15965.5



15965.6





15965.7



15965.8



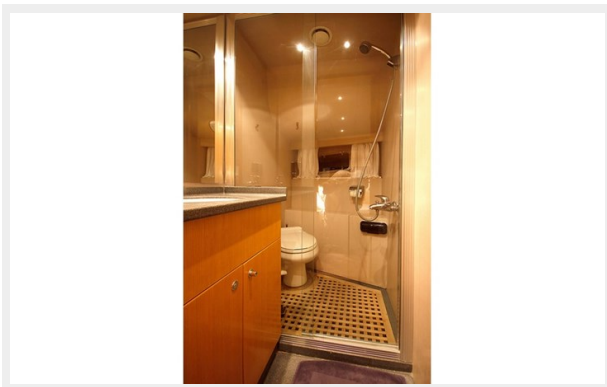
15965.9



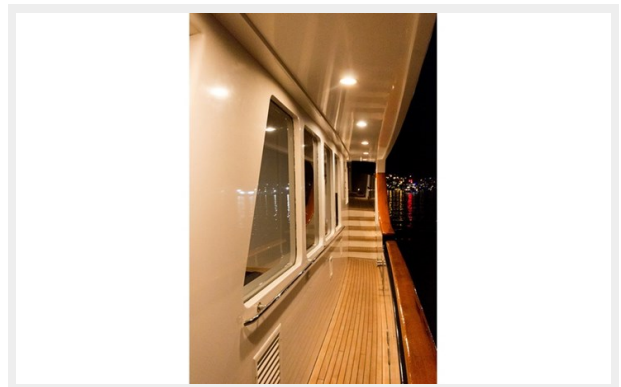
15965.10



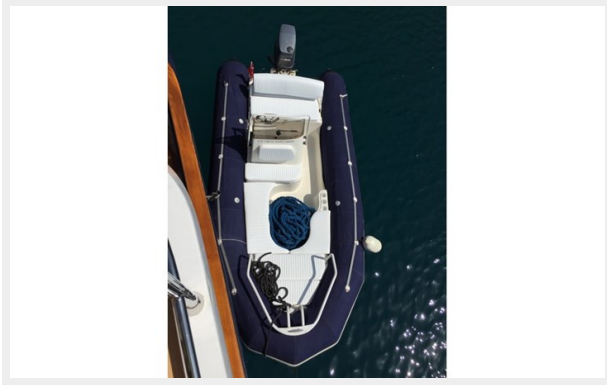
15965.11



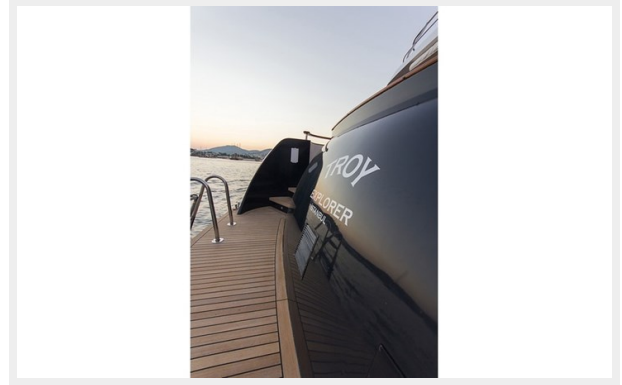
15965.12



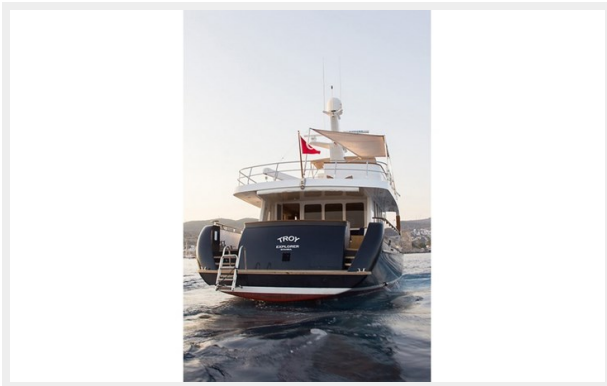
15965.13



15965.14



15965.15



15965.16





# CONTACTS

---

Andrey Shestakov, leading yacht broker of the sales department of Shestakov Yacht Sales Inc. Shestakov Yacht Sales Inc., the official representative of the Miami/Fort Lauderdale FL headquarters.

## Contact details

---

Email: [andrey@shestakovyachtsales.com](mailto:andrey@shestakovyachtsales.com)

Web: [shestakovyachtsales.com/en/](http://shestakovyachtsales.com/en/)

## Telephones

---

USA: +1(954)274-4435

## Office hours

---

Monday – Saturday: **9:00 - 21:00** EDT

Sunday: **closed**

## Address

---



Harbour Towne Marina, 850 NE 3rd St,  
STE 213, Dania, FL 33004