

## "WING IT" — NORDIC TUGS



**Builder:** NORDIC TUGS

**Year Built:** 2016

**Model:** Trawler Yacht

**Price:** PRICE ON APPLICATION

**Location:** United States

**LOA:** 34' 11" (10.64mm)

**Beam:** 11.33

**Min Draft:** 3' 8" (1.12mm)

**Max Draft:** 3' 8" (1.12mm)

**Cruise Speed:** 8 Knots Kts. (9 MPH)

**Max Speed:** 15 Knots Kts. (17 MPH)

Our experienced yacht broker, Andrey Shestakov, will help you choose and buy a yacht that best suits your needs "WING IT" — NORDIC TUGS from our catalogue. Presently, at Shestakov Yacht Sales Inc., we have a wide variety of yachts available on our sale's list. We also work in close contact with all the big yacht manufacturers from all over the world.

If you would like to buy a yacht "WING IT" — NORDIC TUGS or would like help answering any questions concerning purchasing, selling or chartering a yacht, please call +1(954)274-4435

# TABLE OF CONTENTS

---

TABLE OF CONTENTS	2
SPECIFICATIONS	5
Overview	5
Basic Information	5
Dimensions	5
Speed, Capacities and Weight	5
Accommodations	6
Hull and Deck Information	6
Engine Information	6
PHOTOS	7
2	7
3	7
4	7
5	7
6	7
7	7
8	8
9	8
10	8
11	8
12	8
13	8
14	9
15	9
16	9
17	9
18	9
19	9

---

20	10
21	10
22	10
23	10
24	10
25	10
26	11
27	11
28	11
29	11
30	11
31	11
32	12
33	12
34	12
35	12
36	12
37	12
38	13
39	13
40	13
41	13
42	13
43	13
44	14
45	14
46	14
47	14
48	14

---

---

49	14
50	15
51	15
52	15
53	15
54	15
55	15
56	16
CONTACTS	17
Contact details	17
Telephones	17
Office hours	17
Address	17

---

# SPECIFICATIONS

---

## Overview

---

If you have been waiting for that **"SPECIAL"** boat to hit the market then the time has finally come. I sold this Nordic Tug 34 new to the present owners in 2016 and they have cruised and enjoyed it tremendously but health issues are forcing the sale. These owners are true Yachters and know how to maintain their vessel and this one must be considered "BETTER THAN A NEW ONE" due to the upgrades and maintenance performed since new. All maintenance up to date including fresh bottom paint in the spring of 2021. Call today for an appointment to see this pristine vessel and you will be impressed - then start making your cruising plans for the upcoming season.

## Basic Information

---

**Category:** Trawler Yacht

**Sub Category:** Tug

**Model Year:** 2016

**Year Built:** 2016

**Country:** United States

## Dimensions

---

**LOA:** 34' 11" (10.64mm)

**Beam:** 11.33

**Min Draft:** 3' 8" (1.12mm)

**Max Draft:** 3' 8" (1.12mm)

## Speed, Capacities and Weight

---

**Cruise Speed:** 8 Knots Kts. (9 MPH)

**Max Speed:** 15 Knots Kts. (17 MPH)

**Water Capacity:** 100 Gallons

**Holding Tank:** 30 Gal Gallons

**Fuel Capacity:** 205 Gal Gallons

---

## Accommodations

---

**Total Cabins:** 1

**Total Heads:** 1

---

## Hull and Deck Information

---

**Hull Material:** Fiberglass

---

## Engine Information

---

**Engines:** 1

**Manufacturer:** Volvo Penta

**Engine Type:** Inboard

**Fuel Type:** Diesel

# PHOTOS

2



3



4



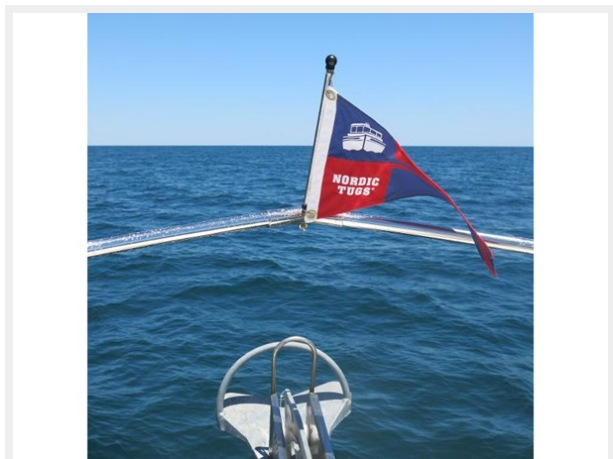
5



6



7



8



9



10



11



12



13





14



15



16



17



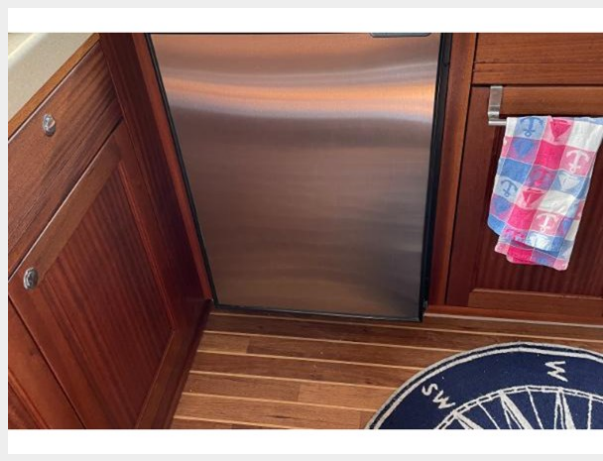
18



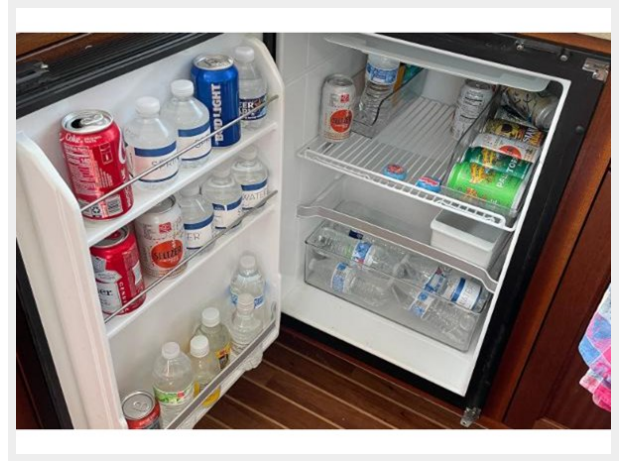
19



20



21



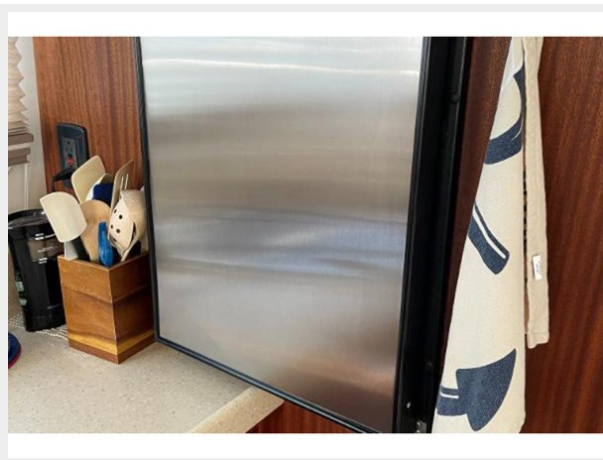
22



23



24



25



26



27



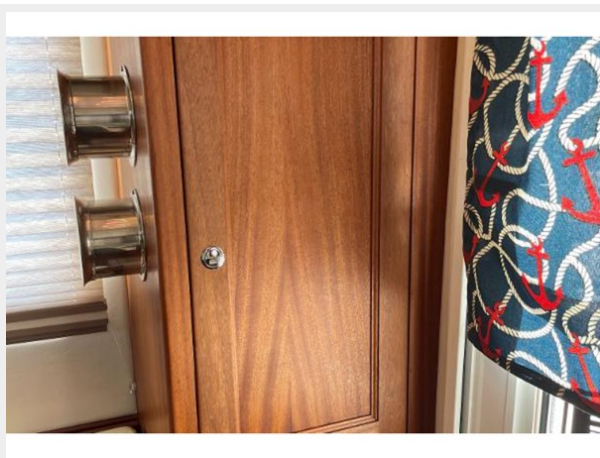
28



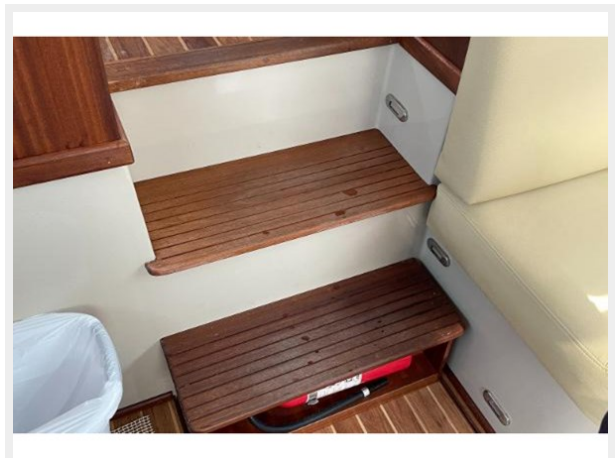
29



30



31



32



33



34



35



36



37



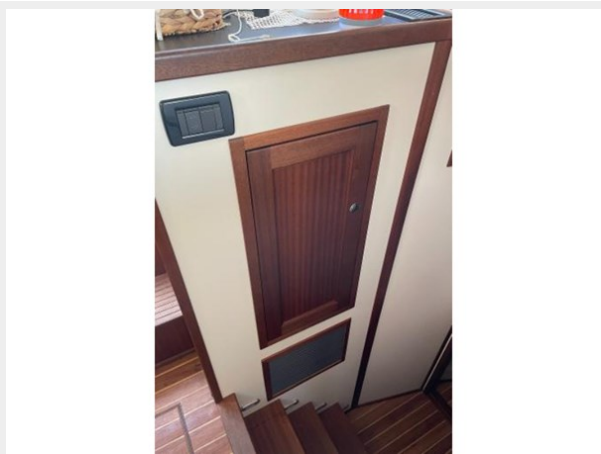
38



39



40



41



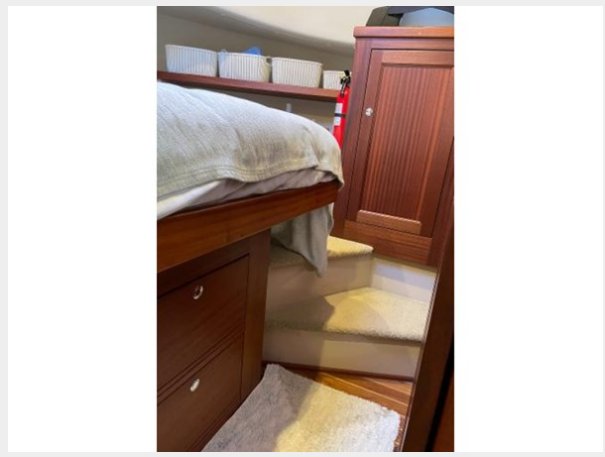
42



43



44



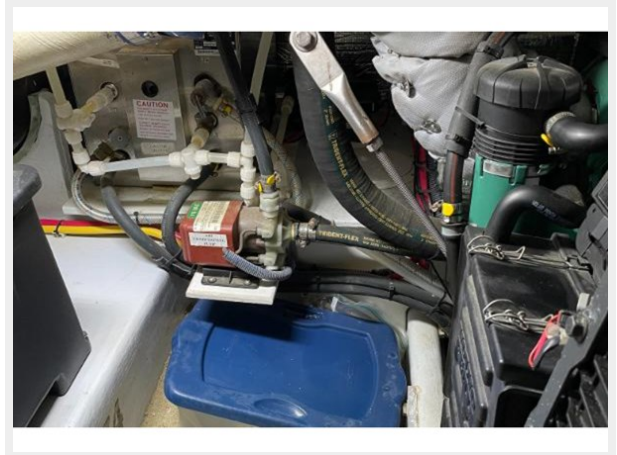
45



46



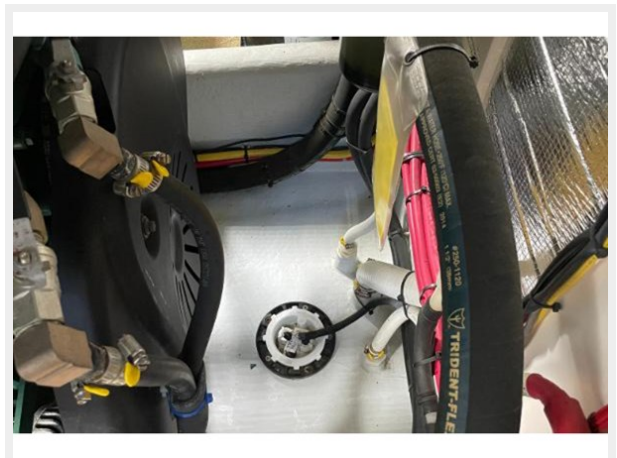
47



48



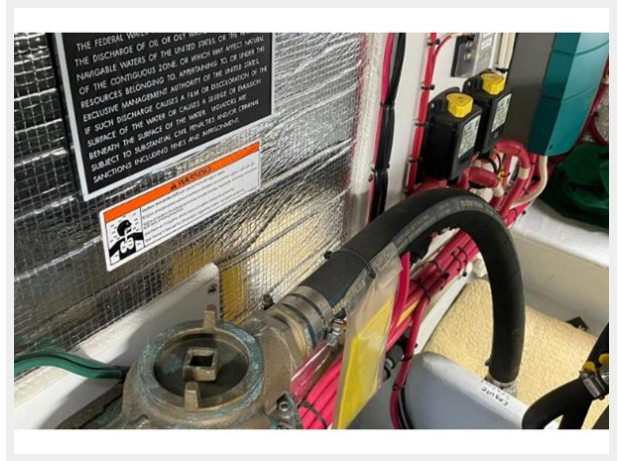
49



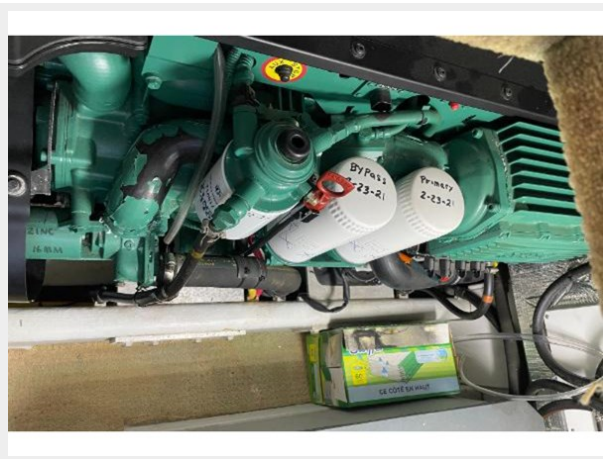
50



51



52



53



54



55



56





---

# CONTACTS

---

Andrey Shestakov, leading yacht broker of the sales department of Shestakov Yacht Sales Inc. Shestakov Yacht Sales Inc., the official representative of the Miami/Fort Lauderdale FL headquarters.

---

## Contact details

---

Email: **andrey@shestakovyachtsales.com**

Web: [shestakovyachtsales.com/en/](http://shestakovyachtsales.com/en/)

---

## Telephones

---

USA: **+1(954)274-4435**

---

## Office hours

---

Monday – Saturday: **9:00 - 21:00** EDT

Sunday: **closed**

---

## Address

---



Harbour Towne Marina, 850 NE 3rd St, STE 213, Dania, FL 33004