

## FD110-004 NEW ARRIVAL — HORIZON



**Builder:** HORIZON

**Year Built:** 2021

**Model:** Motor Yacht

**Price:** PRICE ON APPLICATION

**Location:** United States

**LOA:** 109' 6" (33.38mm)

**Beam:** 24.5

**Min Draft:** 6' 4" (1.93mm)

**Max Draft:** 6' 6" (1.98mm)

**Cruise Speed:** 12 Knots Kts. (14 MPH)

**Max Speed:** 18 Knots Kts. (21 MPH)

Our experienced yacht broker, Andrey Shestakov, will help you choose and buy a yacht that best suits your needs **FD110-004 New Arrival — HORIZON** from our catalogue. Presently, at Shestakov Yacht Sales Inc., we have a wide variety of yachts available on our sale's list. We also work in close contact with all the big yacht manufacturers from all over the world.

If you would like to buy a yacht **FD110-004 New Arrival — HORIZON** or would like help answering any questions concerning purchasing, selling or chartering a yacht, please call **+1(954)274-4435**

# TABLE OF CONTENTS

TABLE OF CONTENTS	2
SPECIFICATIONS	5
Overview	5
Basic Information	5
Dimensions	5
Speed, Capacities and Weight	6
Accommodations	6
Hull and Deck Information	6
Engine Information	6
PHOTOS	7
FD110-004-0032-R - Copy	7
FD110-004-0075-R - Copy	7
FD110-004-0083-R - Copy	7
FD110-004-0300-R - Copy	7
FD110-004-Boat Deck-MG_8003-R	7
FD110-004-0083T-R - Copy	7
FD110-004-Tri Deck_MG_8292-3-R	8
FD110-004-Fwd Deck-MG_8124-R1	8
FD110-004-Fwd Deck_MG_8144-3-R	8
FD110-004-Aft Deck-MG_7790-R - Copy	8
FD110-004-Aft Deck-MG_7720-R1 - Copy	8
FD110-004-Aft Deck-MG_7844-R1	8
FD110-004-Aft Deck__MG_8827-3-R - Copy	9
FD110-004-Pilot House-MG_8430-R1	9
FD110-004-Enclosed Skylounge_MG_7913-3-R	9
FD110-004-Enclosed Skylounge_MG_7910-3-R	9
FD110-004-Enclosed Skylounge-MG_8481-R1	9
FD110-004-Salon-MG_7678-R1	9

FD110-004-Salon-MG_7609-R	10
FD110-004-Salon-MG_7573-R	10
FD110-004-Dining-MG_7550-R	10
FD110-004-Dining-MG_7543-R	10
FD110-004-Dining_MG_7585-3-R	10
FD110-004-Dining-MG_8721-2-R	10
FD110-004-Galley-MG_7497-3-R	11
FD110-004-Galley-MG_7500-3-R	11
FD110-004-Master Stateroom_MG_6922-3-R	11
FD110-004-Master Stateroom_MG_6868-2-1	11
FD110-004-Master Stateroom-MG_6961-3-R	11
FD110-004-Master Stateroom_MG_6889-3-R	11
FD110-004-Master Stateroom-Nightstand_MG_7048-3-R	12
FD110-004-Master Stateroom-Vanity_MG_8769-3-R1	12
FD110-004-Master Head_MG_6991-3-R	12
FD110-004-Fwd. VIP Stateroom-MG_7102-3-R1	12
FD110-004-Stbd. VIP Stateroom-MG_7350-3-R	12
FD110-004-Port VIP Stateroom_MG_7269-3-R1	12
FD110-004-Fwd. Port Guest Stateroom-MG_7214-3-R	13
FD110-004-Fwd. Port Guest Stateroom_MG_7217-3-R	13
FD110-004-Stbd. VIP Head_MG_7392-3-R	13
FD110-004-Stbd. VIP Head_MG_7329-3-R	13
FD110-004-Laundry-MG_8797-3-R	14
FD110-004_-VIP Staterooms-MG_7416-3-R	14
FD110-004-Crew Area__MG_8917-3-R	14
CONTACTS	15
Contact details	15
Telephones	15
Office hours	15

---

Address

15

# SPECIFICATIONS

---

## Overview

---

### QUICK SPECS

Superyacht styling with tri-deck design

Enclosed skylounge w/ dayhead

Custom pilothouse w/ sofa and chart desk

On-deck Master stateroom + four guest cabins below, all ensuite

Three private crew quarters aft

Main salon + formal dining

Spacious galley w/ privacy screen & doors

Customized and luxurious interior design package

Large bow seating area + sun pads and Jacuzzi

Extensive storage in stern + hydraulic swim platform

## Basic Information

---

**Category:** Motor Yacht

**Sub Category:** Motor Yacht

**Model Year:** 2022

**Year Built:** 2021

**Country:** United States

## Dimensions

---

**LOA:** 109' 6" (33.38mm)

**LWL:** 95' 5" (29.08mm)

**Beam:** 24.5

**Min Draft:** 6' 4" (1.93mm)

**Max Draft:** 6' 6" (1.98mm)

---

## Speed, Capacities and Weight

---

**Cruise Speed:** 12 Knots Kts. (14 MPH)

**Max Speed:** 18 Knots Kts. (21 MPH)

**Gross Tonnage:** 155 Pounds

**Water Capacity:** 800 Gallons

**Holding Tank:** 200 Gal Gallons

**Fuel Capacity:** 5430 Gal Gallons

---

## Accommodations

---

**Total Cabins:** 5

**Total Heads:** 8

**Crew Heads:** 2

---

## Hull and Deck Information

---

**Hull Material:** Fiberglass

**Hull Color:** White

---

## Engine Information

---

**Engines:** 2

**Manufacturer:** CAT

**Engine Type:** Inboard

**Fuel Type:** Diesel

# PHOTOS

**FD110-004-0032-R - Copy**



**FD110-004-0075-R - Copy**



**FD110-004-0083-R - Copy**



**FD110-004-0300-R - Copy**



**FD110-004-0083T-R - Copy**



**FD110-004-Boat Deck-MG\_8003-R**



FD110-004-Fwd Deck-MG\_8124-R1



FD110-004-Tri Deck\_MG\_8292-3-R



FD110-004-Fwd Deck\_MG\_8144-3-R



FD110-004-Aft Deck-MG\_7790-R - Copy



FD110-004-Aft Deck-MG\_7844-R1



FD110-004-Aft Deck-MG\_7720-R1 - Copy





**FD110-004-Aft Deck\_\_MG\_8827-3-R - Copy**



**FD110-004-Pilot House-MG\_8430-R1**



**FD110-004-Enclosed Skylounge\_MG\_7913-3-R**



**FD110-004-Enclosed Skylounge\_MG\_7910-3-R**



**FD110-004-Enclosed Skylounge-MG\_8481-R1**



**FD110-004-Salon-MG\_7678-R1**



**FD110-004-Salon-MG\_7609-R**



**FD110-004-Salon-MG\_7573-R**



**FD110-004-Dining-MG\_7543-R**



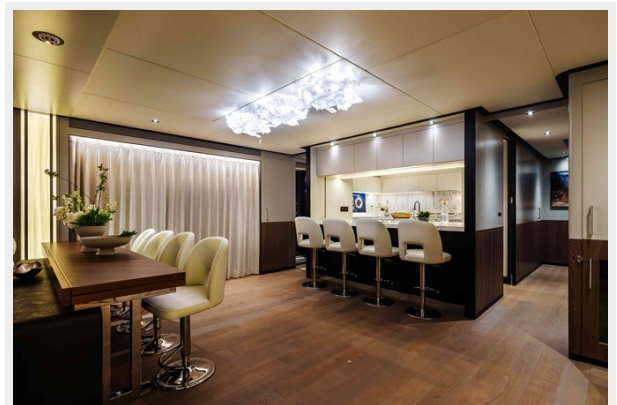
**FD110-004-Dining-MG\_7550-R**



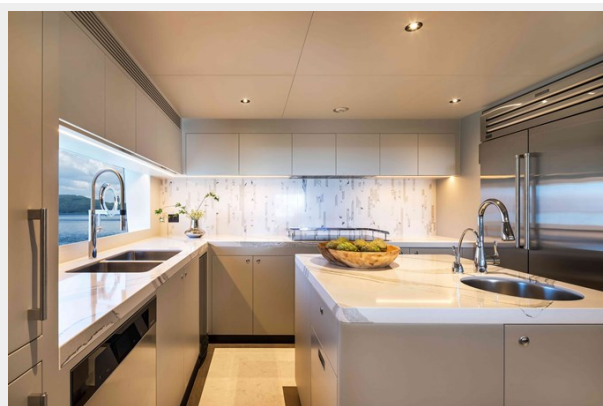
**FD110-004-Dining\_MG\_7585-3-R**



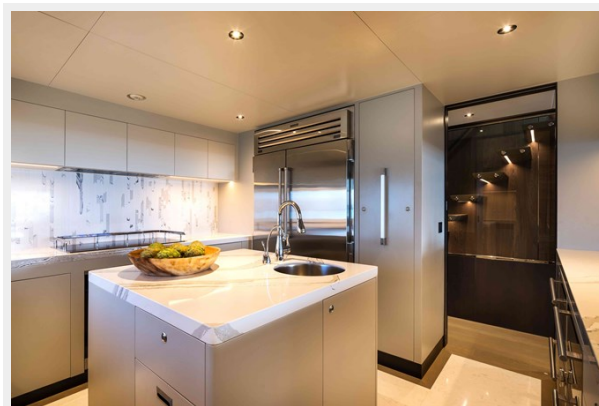
**FD110-004-Dining-MG\_8721-2-R**



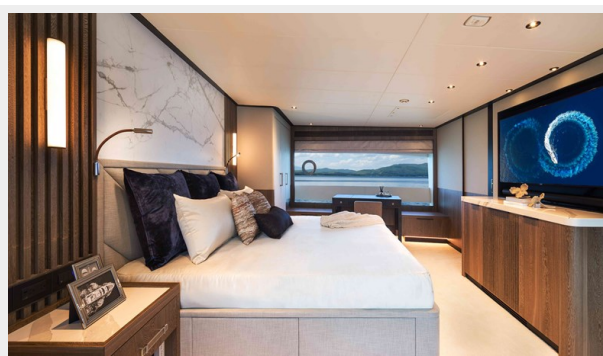
**FD110-004-Galley-MG\_7497-3-R**



**FD110-004-Galley-MG\_7500-3-R**



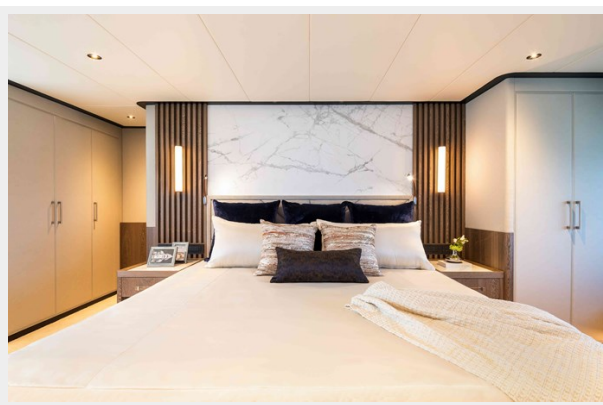
**FD110-004-Master Stateroom\_MG\_6868-2-1**



**FD110-004-Master Stateroom\_MG\_6922-3-R**



**FD110-004-Master Stateroom\_MG\_6889-3-R** **FD110-004-Master Stateroom-MG\_6961-3-R**



**FD110-004-Master Stateroom-  
Vanity\_MG\_8769-3-R1**



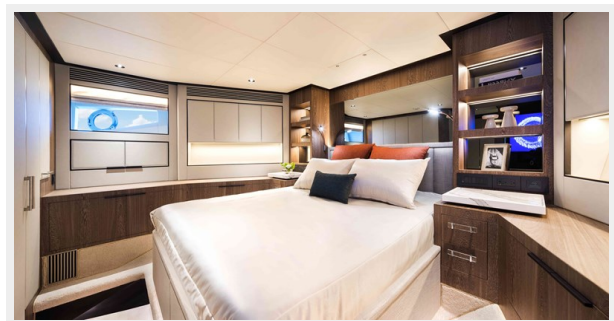
**FD110-004-Master Stateroom-  
Nightstand\_MG\_7048-3-R**



**FD110-004-Master Head\_MG\_6991-3-R**



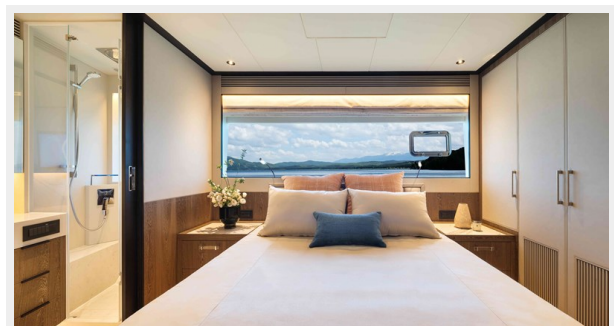
**FD110-004-Fwd. VIP Stateroom-MG\_7102-3-  
R1**



**FD110-004-Stbd. VIP Stateroom-MG\_7350-3-  
R**



**FD110-004-Port VIP Stateroom\_MG\_7269-3-  
R1**



**FD110-004-Fwd. Port Guest Stateroom-  
MG\_7214-3-R**



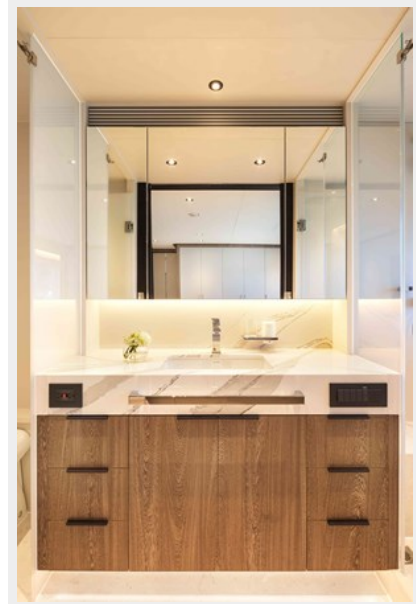
**FD110-004-Fwd. Port Guest  
Stateroom\_MG\_7217-3-R**



**FD110-004-Stbd. VIP Head\_MG\_7392-3-R**



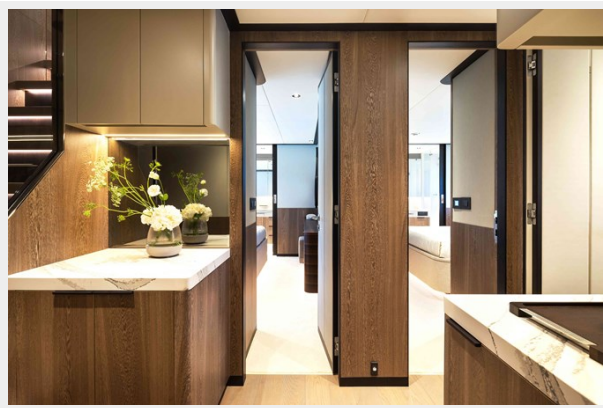
**FD110-004-Stbd. VIP Head\_MG\_7329-3-R**



**FD110-004-Laundry-MG\_8797-3-R**



**FD110-004\_-VIP Staterooms-MG\_7416-3-R**



**FD110-004-Crew Area\_\_MG\_8917-3-R**



# CONTACTS

---

Andrey Shestakov, leading yacht broker of the sales department of Shestakov Yacht Sales Inc. Shestakov Yacht Sales Inc., the official representative of the Miami/Fort Lauderdale FL headquarters.

## Contact details

---

Email: [andrey@shestakovyachtsales.com](mailto:andrey@shestakovyachtsales.com)

Web: [shestakovyachtsales.com/en/](http://shestakovyachtsales.com/en/)

## Telephones

---

USA: +1(954)274-4435

## Office hours

---

Monday – Saturday: **9:00 - 21:00** EDT

Sunday: **closed**

## Address

---



Harbour Towne Marina, 850 NE 3rd St,  
STE 213, Dania, FL 33004