

## TEMPO REALE — HAKVOORT



**Builder:** HAKVOORT

**Year Built:** 1990

**Model:** Motor Yacht

**Price:** PRICE ON APPLICATION

**Location:** United States

**LOA:** 112' (34.14mm)

**Beam:** 26.91

**Min Draft:** 4' 10" (1.47mm)

**Max Draft:** 4' 10" (1.47mm)

**Cruise Speed:** 20 Knots Kts. (23 MPH)

**Max Speed:** 30 Knots Kts. (35 MPH)

Our experienced yacht broker, Andrey Shestakov, will help you choose and buy a yacht that best suits your needs **Tempo Reale — HAKVOORT** from our catalogue. Presently, at Shestakov Yacht Sales Inc., we have a wide variety of yachts available on our sale's list. We also work in close contact with all the big yacht manufacturers from all over the world.

If you would like to buy a yacht **Tempo Reale — HAKVOORT** or would like help answering any questions concerning purchasing, selling or chartering a yacht, please call **+1(954)274-4435**

---

# TABLE OF CONTENTS

---

TABLE OF CONTENTS	2
SPECIFICATIONS	3
Overview	3
Basic Information	4
Dimensions	4
Speed, Capacities and Weight	4
Accommodations	4
Hull and Deck Information	4
Engine Information	5
PHOTOS	6
CONTACTS	18
Contact details	18
Telephones	18
Office hours	18
Address	18

---

# SPECIFICATIONS

---

## Overview

---

On boarding it is obvious the massive cockpit idea for Sport Fishing or staging all types of water sports. A hydraulic swim platform extends into the water for easy access for swimming or diving. To port and starboard in the cockpit are settee seating with cocktail tables ideal for viewing all the action. Going up the steps and into the Main Salon/Dining area your first impression is of warm woods and exquisite Dutch quality. This area is ideal for entertaining in grand style with a bar forward to port and the dining table to starboard. The area also features comfortable lounging and access to the entertaining systems. Proceeding forward to starboard is the Master or VIP stateroom on this main deck with a beautiful ensuite head with bath and large hanging lockers. Proceeding down from the Main Salon area is the second VIP stateroom to starboard with en-suite head, bath and hanging locker. Across the hall through an electric hidden pocket door is the access to the Main Galley the size and equipment as you would expect on any large superyacht (much larger than any Sport Fishing Yachts) with three private double crew staterooms for up to six crew (as you would expect to see in a superyacht). Proceeding up from the Main Salon you enter the Sky Lounge/Helm area. This area gives you a second salon with excellent panoramic views ideal for at anchor or underway. Forward is the main helm area complete with all the navigations electronics your captain could ask for. Out the aft electric doors onto the upper deck lounging and dining area ideal for alfresco dining in the open air (similar feel to a large motor yacht). Up easy steps to the upper Flying Bridge complete with hard top and lounging area (like on a large Motoryacht) as well as a forward command station for full operation and an aft command station for operating the vessel for landing large fish or deep dropping for bottom fishing. On the foredeck is a large sun area complete with a six person Jacuzzi tub also the perfect area for entertaining larger groups.

Comments: This yacht was originally custom built by the famous Dutch Shipyard Hakvoort in the beautiful Village of Monnickendam. Hakvoort is known for producing some of the worlds finest yachts and TEMPO REALE is a perfect example. Originally designed and built to be the ultimate sporting tender to a large Superyacht she was designed primarily for extending the entertaining capacity with the ability of Speed, Luxury, and Shoal draft (only 4' with the Jet Drives). The ideal vessel for the Bahamas or like areas. TEMPO REALE has been lovingly maintained and updated by her generous owner and full time crew. Any Yachting enthusiast will be impressed by her exceptional condition, quality and design. If you are the person who only demands the best this unique yacht may well be what you desire and at a fraction of the replacement value and ready for your adventures now without the wait of a new build.

---

## Basic Information

---

**Category:** Motor Yacht

**Model Year:** 1990

**Year Built:** 1990

**Country:** United States

---

## Dimensions

---

**LOA:** 112' (34.14mm)

**LWL:** 91' 1" (27.76mm)

**Beam:** 26.91

**Min Draft:** 4' 10" (1.47mm)

**Max Draft:** 4' 10" (1.47mm)

---

## Speed, Capacities and Weight

---

**Cruise Speed:** 20 Knots Kts. (23 MPH)

**Max Speed:** 30 Knots Kts. (35 MPH)

**Gross Tonnage:** 221 Pounds

**Water Capacity:** 2200 Gallons

**Holding Tank:** 280 Gal Gallons

**Fuel Capacity:** 6660 Gal Gallons

---

## Accommodations

---

**Total Cabins:** 2

**Total Heads:** 3

**Crew Heads:** 3

---

## Hull and Deck Information

---

**Hull Material:** Aluminum

---

## Engine Information

---

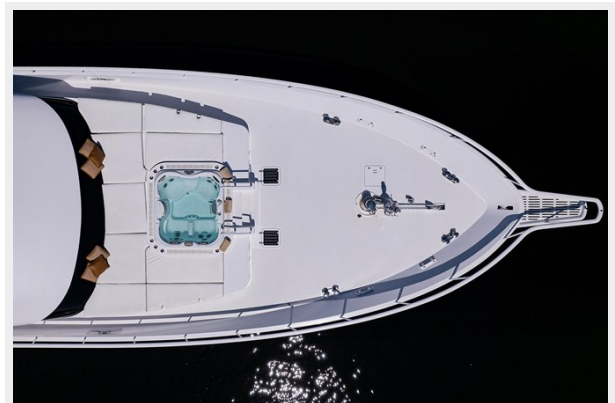
**Engines:** 2

**Manufacturer:** MTU

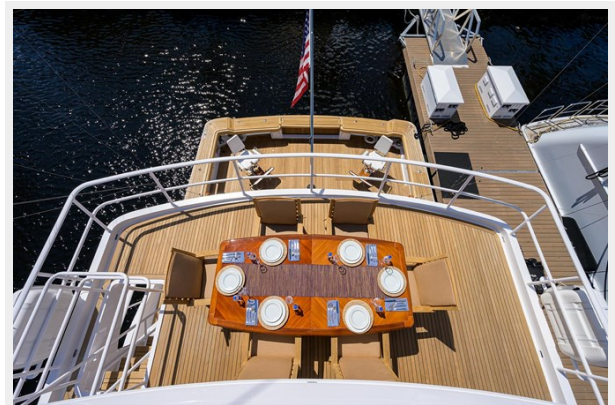
**Engine Type:** Inboard

**Fuel Type:** Diesel

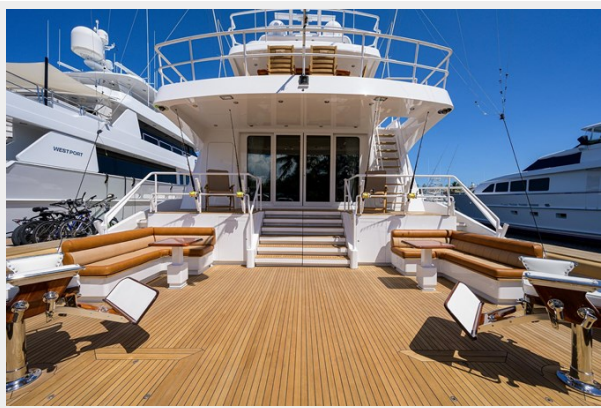
# PHOTOS



















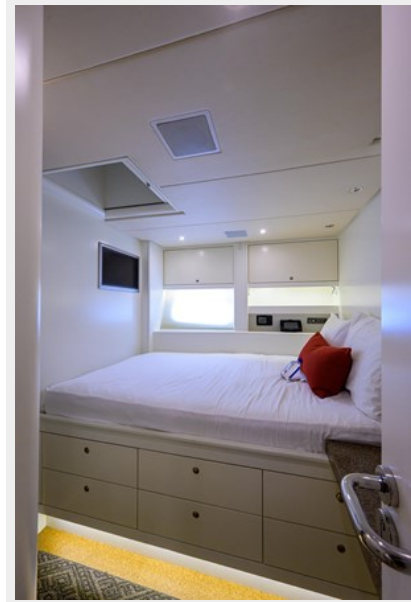




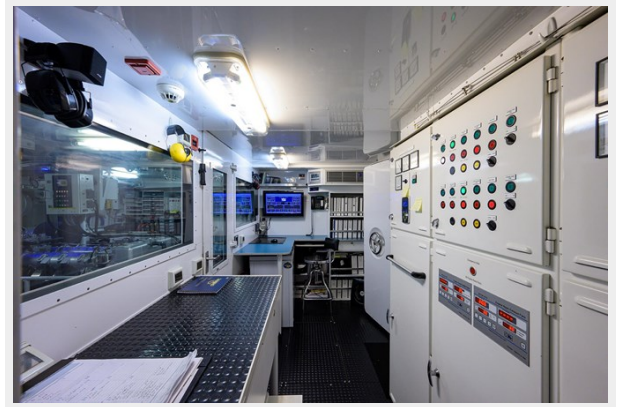
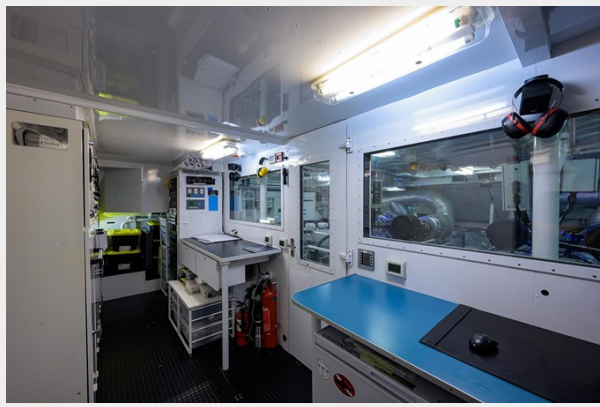




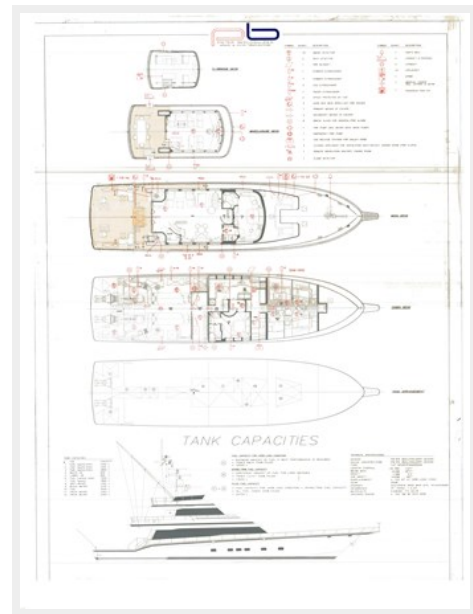
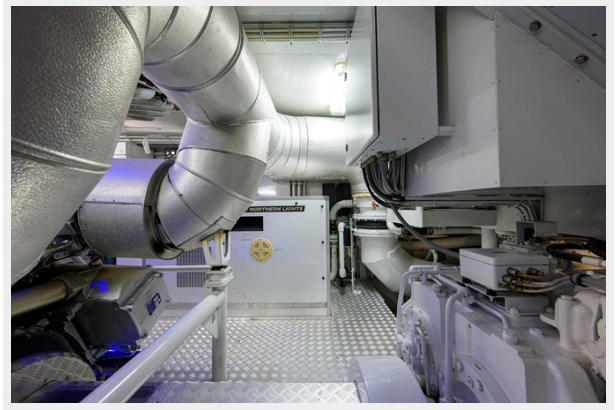
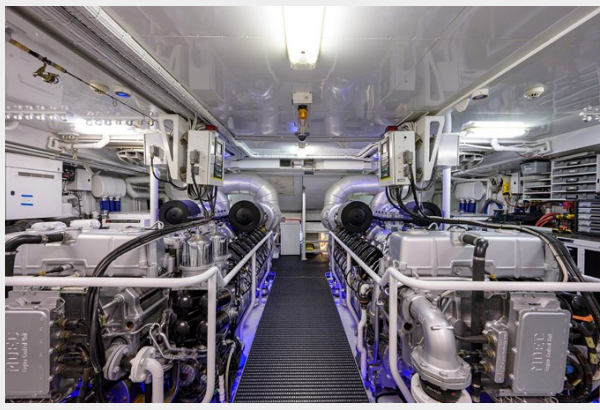












# CONTACTS

---

Andrey Shestakov, leading yacht broker of the sales department of Shestakov Yacht Sales Inc. Shestakov Yacht Sales Inc., the official representative of the Miami/Fort Lauderdale FL headquarters.

## Contact details

---

Email: [andrey@shestakovyachtsales.com](mailto:andrey@shestakovyachtsales.com)

Web: [shestakovyachtsales.com/en/](http://shestakovyachtsales.com/en/)

## Telephones

---

USA: +1(954)274-4435

## Office hours

---

Monday – Saturday: **9:00 - 21:00** EDT

Sunday: **closed**

## Address

---



Harbour Towne Marina, 850 NE 3rd St,  
STE 213, Dania, FL 33004