

## LADY PEGASUS — WESTPORT



**Builder:** WESTPORT

**Year Built:** 2010

**Model:** Motor Yacht

**Price:** PRICE ON APPLICATION

**Location:** United States

**LOA:** 130' (39.62m)

**Beam:** 26

**Max Draft:** 7' 6" (2.29m)

**Cruise Speed:** 20 Knots Kts. (23 MPH)

**Max Speed:** 22 Knots Kts. (25 MPH)

Our experienced yacht broker, Andrey Shestakov, will help you choose and buy a yacht that best suits your needs **LADY PEGASUS — WESTPORT** from **our catalogue**. Presently, at **Shestakov Yacht Sales Inc.**, we have a wide variety of yachts available on **our sale's list**. We also work in close contact with all the big **yacht manufacturers** from all over the world.

If you would like to buy a yacht **LADY PEGASUS — WESTPORT** or would like help answering any questions concerning purchasing, selling or chartering a yacht, please call **+1(954)274-4435**

# TABLE OF CONTENTS

TABLE OF CONTENTS	2
SPECIFICATIONS	5
Basic Information	5
Dimensions	5
Speed, Capacities and Weight	5
Accommodations	5
Hull and Deck Information	5
Engine Information	6
PHOTOS	7
Dining and salon at night	7
Main salon looking fwd	7
Galley aft	7
Galley forward	7
Day head main deck	8
On deck master office	8
Master	8
Master - On deck stbd side	8
Wardrobe dressing room x2	9
Master - On deck portside	9
Wardrobe dressing room	9
Master bath	9
Master toilet room	10
VIP Port	10
VIP ensuite head to port	10
VIP ensuite head to port	10
VIP ensuite head stbd	11
VIP Stbd	11
VIP ensuite head stbd	11

Guest twin cabin to port	11
Guest head - port	12
Guest twin cabin to stbd	12
Guest head - stbd	12
Pilothouse	12
Pilothouse	13
Pilothouse Captain's desk	13
Day head skylounge	13
Skylounge	13
AV room equipment	14
Crew lounge	14
Aft deck aft settee	14
Aft deck dining	14
Aft deck bar fwd to port	14
Flybridge looking fwd	14
Flybridge view fwd	15
Flybridge - Hot tub	15
Hot tub FB fwd	15
Flybridge looking aft	15
Flybridge port side aft	15
Flybridge aft seating	15
Flybridge aft	16
Skylounge and boat deck view aft	16
Skylounge boat deck view fwd to port	16
Skylounge boat deck looking aft	16
Skylounge outside aft seating area	17
Boat deck with tender	17
Foredeck seating	17
Foredeck	17

---

Observation deck looking aft	17
Observation deck fwd	17
Engine room	18
CONTACTS	19
Contact details	19
Telephones	19
Office hours	19
Address	19

---

# SPECIFICATIONS

---

## Basic Information

---

**Category:** Motor Yacht

**Sub Category:** Pilothouse

**Model Year:** 2011

**Year Built:** 2010

**Country:** United States

## Dimensions

---

**LOA:** 130' (39.62mm)

**Beam:** 26

**Max Draft:** 7' 6" (2.29mm)

## Speed, Capacities and Weight

---

**Cruise Speed:** 20 Knots Kts. (23 MPH) **Cruise Speed Range:** 3000

**Max Speed:** 22 Knots Kts. (25 MPH)

**Gross Tonnage:** 333 Pounds

**Water Capacity:** 1726 Gallons

**Holding Tank:** 1700 Gal Gallons

**Fuel Capacity:** 9965 Gal Gallons

## Accommodations

---

**Total Cabins:** 5

## Hull and Deck Information

---

**Hull Material:** Fiberglass

**Deck Material:** Teak

**Hull Configuration:** Semi-Displacement **Hull Designer:** William Garden

**Interior Designer:** Westport

---

## Engine Information

---

**Engines:** 2

**Manufacturer:** MTU

**Engine Type:** Inboard

**Fuel Type:** Diesel

# PHOTOS

**Dining and salon at night**



**Main salon looking fwd**



**Galley aft**



**Galley forward**





**Day head main deck**



**On deck master office**



**Master**



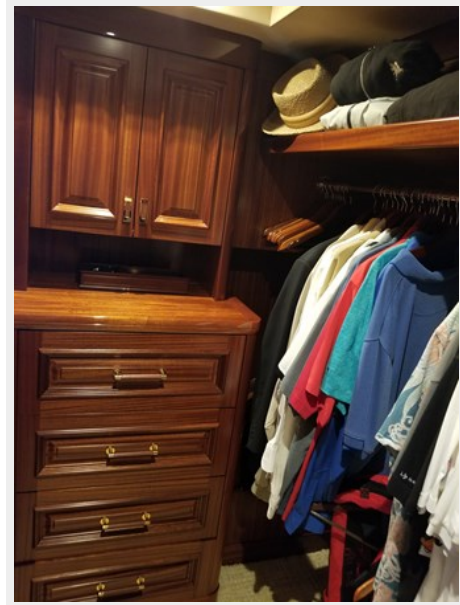
**Master - On deck stbd side**





**Wardrobe dressing room x2**

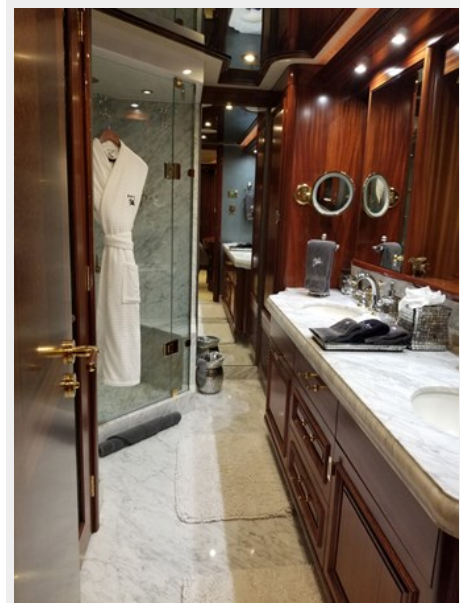
**Master - On deck portside**



**Wardrobe dressing room**



**Master bath**



**Master toilet room**



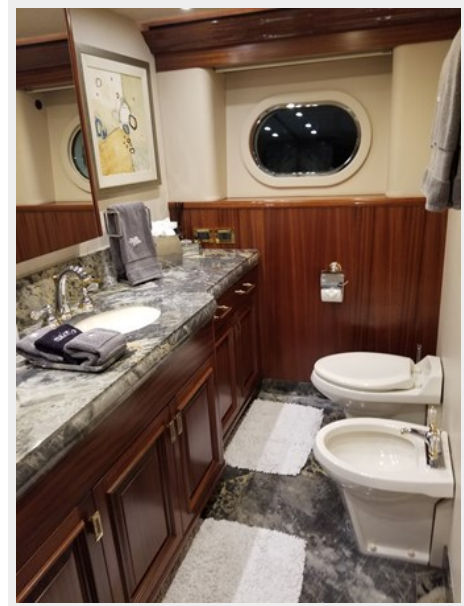
**VIP Port**



**VIP ensuite head to port**



**VIP ensuite head to starboard**





**VIP Stbd**



**VIP ensuite head stbd**



**VIP ensuite head stbd**



**Guest twin cabin to port**



**Guest head - port**



**Guest twin cabin to stbd**



**Guest head - stbd**



**Pilothouse**





**Pilothouse**



**Pilothouse Captain's desk**



**Skyounge**

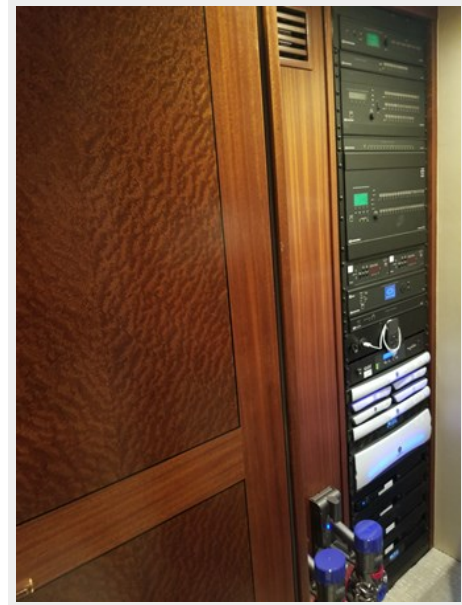


**Day head skylounge**



**AV room equipment**

**Crew lounge**



**Aft deck aft settee**



**Aft deck dining**



**Aft deck bar fwd to port**



**Flybridge looking fwd**





**Flybridge view fwd**



**Flybridge - Hot tub**



**Hot tub FB fwd**



**Flybridge looking aft**



**Flybridge port side aft**

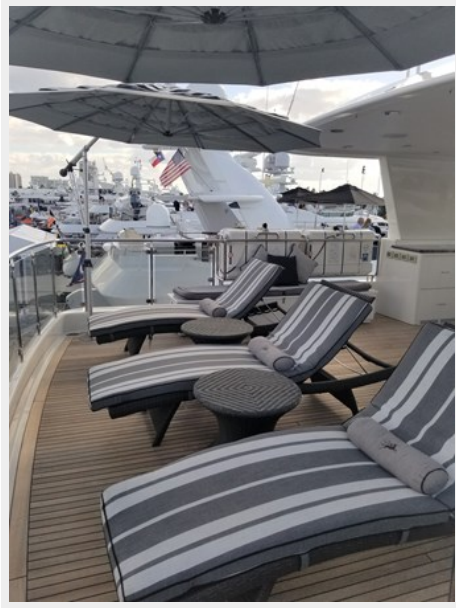


**Flybridge aft seating**





**Flybridge aft**



**Skylounge and boat deck view aft**



**Skylounge boat deck looking aft**



**Skylounge boat deck view fwd to port**



**Skylounge outside aft seating area**



**Boat deck with tender**



**Foredeck seating**



**Foredeck**



**Observation deck looking aft**



**Observation deck fwd**





## Engine room



# CONTACTS

---

Andrey Shestakov, leading yacht broker of the sales department of Shestakov Yacht Sales Inc. Shestakov Yacht Sales Inc., the official representative of the Miami/Fort Lauderdale FL headquarters.

## Contact details

---

Email: **andrey@shestakovyachtsales.com**

Web: [shestakovyachtsales.com/en/](http://shestakovyachtsales.com/en/)

## Telephones

---

USA: **+1(954)274-4435**

## Office hours

---

Monday – Saturday: **9:00 - 21:00** EDT

Sunday: **closed**

## Address

---



Harbour Towne Marina, 850 NE 3rd St, STE 213, Dania, FL 33004