

SPENCER ARYN — OCEAN ALEXANDER



Builder: OCEAN ALEXANDER

Year Built: 2019

Model: Boats

Price: PRICE ON APPLICATION

Location: United States

LOA: 47' (14.33mm)

Beam: 13.75

Min Draft: 2' 6" (0.76mm)

Max Draft: 3' 2" (0.97mm)

Our experienced yacht broker, Andrey Shestakov, will help you choose and buy a yacht that best suits your needs **Spencer Aryn — OCEAN ALEXANDER** from our catalogue. Presently, at Shestakov Yacht Sales Inc., we have a wide variety of yachts available on our sale's list. We also work in close contact with all the big yacht manufacturers from all over the world.

If you would like to buy a yacht **Spencer Aryn — OCEAN ALEXANDER** or would like help answering any questions concerning purchasing, selling or chartering a yacht, please call **+1(954)274-4435**

TABLE OF CONTENTS

TABLE OF CONTENTS	2
SPECIFICATIONS	5
Overview	5
Basic Information	7
Dimensions	7
Speed, Capacities and Weight	7
Accommodations	8
Hull and Deck Information	8
Engine Information	8
PHOTOS	9
DJI_0589	9
DJI_0655	9
DJI_0602	9
DJI_0613	9
DJI_0643	9
DJI_0600	9
DJI_0611-Edit	10
DJI_0650-Edit	10
DJI_0591	10
DJI_0635-Edit	10
DSC_6692	10
DSC_6588	10
DSC_6677	11
DSC_6572	11
DSC_6733	11
DSC_6579	11
DSC_6594	11
DSC_6614	11

DSC_6662	12
DSC_6649	12
DSC_6652	12
DSC_6669	12
DSC_6969	12
DSC_6542	12
DSC_6369	13
DSC_6367-2	13
DSC_6428	13
DSC_6408-2-Edit	13
DSC_6424-Edit	13
DSC_6394	13
DSC_6386	14
DSC_6392	14
DSC_6358	14
DSC_6451	14
DSC_8644	14
DSC_6514	14
DSC_6335	15
DSC_6343-2	15
DSC_6485-Edit	15
DSC_6487-Edit	15
DSC_6891	15
DSC_6756	15
DSC_6817-Edit-Edit	16
DSC_6867-Edit	16
DSC_6823-Edit	16
DSC_6927-Edit	16
DSC_6951-Edit	16

DSC_6938-Edit	16
DSC_6990	17
DSC_6599	17
CONTACTS	18
Contact details	18
Telephones	18
Office hours	18
Address	18

SPECIFICATIONS

Overview

Loaded with options, recently completed 300 hour service, and kept in the brackish waters of the Chesapeake Bay, this rare Ocean Alexander 45 Divergence is the best day boat on the market. This is the ultimate center console day boat with yacht finishes.

Featuring the same finish, construction techniques, and attention to detail **as larger 100'+ Ocean Alexanders**, this 45 represents a phenomenal opportunity to get into a caliber of boat that **no other manufacturer produces in this size range**. With a **dry weight of almost 29,000lbs and a beam of 13' 9"**, the 45 Divergence runs like a tank and is a **far better blue water boat** than anything else in its class.

The boat features an **Alexseal painted hull and superstructure**, making maintenance extremely easy and **avoids the seasonal oxidation** found on gelcoat boats that often require a compound to remove. **Esthec decking**, usually reserved for larger yachts, is laid throughout to create a **teak look, without teak maintenance**. **Powered by 1,400HP of Mercury outboards**, the boat **gets on plane with little to no bow rise**. Docking could not be easier with the **Mercury joystick and a bow thruster**.

Loaded with standard features seldom, if ever, found on center consoles in this size, the boat boasts the following features, options, and upgrades:

- **Alexseal Paint Hull Color: White w/ Black Stripe**
- Full 300 hour service on engines (December 2022)
- New fusion AMP (2022)
- New freshwater pump (2022)
- **Quad Mercury Verado 350hp: White**
- **Mercury Joystick Piloting Control**
- **SeaKeeper 6 Stabilizer**
- **OctoPlex AC/DC monitoring system and electronic distribution panel**
- **Nautical (Esthec) Decking**
- Opposing seating in cockpit with sliding backrests
- **Dual, foldout balconies on starboard and port side**
- **Retractable Motorized Shurshade Cockpit Sunshade**
- **FLIR Thermal Night Vision M324S with Stabilized Gyro**
- AIS (Automatic Identification System) VHF
- **KVH Tracvision TV3 SAT TV System**
- Outdoor Galley Lid **carbon fiber**
- **Kenyon Grill**
- **Icemaker in Outdoor Galley**

- Fish Box Freezer Plate in Aft Port Tub
- Custom Walnut Flooring in Lieu of Carpet
- **Bow Thruster – Side Power 24V with Joystick Helm Control**
- **Bow and Cockpit Table:** Teak
- Edson comfort grip power wheel, **carbon fiber**
- **Carbon Fiber** Hull Side Inserts
- Engine Covers Sunbrella: Black
- Hardtop Spreader Lights, LED (1 Forward, 2 Aft)
- Bow Sunshade w/Carbon Fiber Poles
- Hardtop Hatch
- Custom Painted Molded Antenna Mast to Match Hull Color
- Electrical Adjustable Helm Seat, Captain Only
- Custom Design Painted Helm Station with **Carbon Fiber** Inserts
- Fiberglass Aft Sofa in Lieu of Standard Forward-Facing Fold Down Bench
- **Canvas Cover Package**
- Additional Rod Holders (6)

Beefy gunnels are carried all the way to the bow where **V-shaped bow seating**, along with **forward facing backrests**, is coupled with a **high-low, high gloss teak table**. When the table is lowered, a filler cushion creates a wide sun pad for multiple people. The lounge forward of the helm allows for multiple passengers to recline, while still facing forward, underway. **A Fusion stereo remote, dedicated bow speakers, and pop-up courtesy lights**, keeps all bow passengers entertained.

The helm is akin to one found on a much larger yacht and will leave nothing for want. **Triple Garmin 8617s feature integration for 1224XHD Radar, SeaKeeper, Infrared Camera (FLIR), Lumishore underwater lighting, Fusion stereo, sonar, and AIS. OctoPlex, windlass control with chain counter, VHF, spotlight, trim tab, and bow thruster** control round out a helm that will satisfy even the most demanding. Three helm seats keep the captain company with flip up bolsters and folding armrests.

While most dayboats of this size feature some sort of wet bar, none feature a **true outdoor galley** like the 45 Divergence. A carbon fiber lid lifts to reveal a **sink** with telescoping faucet, **grill, and cooktop**. The cooking area is flanked by an **icemaker, drawer refrigerator, and drawer freezer**, which provide everything needed to entertain and prepare any meal.

There is no other cockpit in this layout, period. Dual seating consoles sit opposite one another. But, the forward console's backrest slides back, to provide **two rows of bench seating, both facing forward**. This provides seating for a small crowd.. When it comes time to eat, swim, or entertain, a cockpit table rises from the floor and both **starboard and portside balconies fold out**. With both balconies out, the beam of the boat transforms to close to 20'.

A **transom locker** can serve as dive tank storage, a baitwell, or fender storage. Another **sink with telescoping faucet** is built into the port side of the transom, hidden from site when the lid is closed.

Below deck, the design and luxury will rival any yacht, true in point to the Ocean Alexander brand. Designed by world-renowned yacht designer **Evan Marshall**, the cabin features rich oak cabinetry, hardwood flooring, and luxurious soft goods. **A U-shaped dinette can easily be converted to a large berth** with the help of a high-low table, filler cushion, and **pivoting forward bulkhead** that, when up, significantly increases the length of the berth. When closed, it serves as great storage to keep items out of sight.

Satellite television, Apple TV, Television and Fusion soundbar will make any guests forget that they are on a 45' center console. A luxurious head with backlit mirror and separate shower stall make extended stays very comfortable.

Do not miss this opportunity before it is gone. Seldom do you find a boat of this caliber in this size range and layout.

Boat is offsite, call ahead for appointment

Basic Information

Category: Boats

Sub Category: Center Console

Model Year: 2020

Year Built: 2019

Country: United States

Dimensions

LOA: 47' (14.33mm)

LWL: 37' (11.28mm)

Beam: 13.75

Min Draft: 2' 6" (0.76mm)

Max Draft: 3' 2" (0.97mm)

Speed, Capacities and Weight

Water Capacity: 100 Gallons

Holding Tank: 40 Gal Gallons

Fuel Capacity: 607 Gal Gallons

Accommodations

Total Cabins: 1

Total Berths: 1

Sleeps: 2

Total Heads: 1

Hull and Deck Information

Hull Material: Fiberglass

Deck Material: Fiberglass

Hull Configuration: Modified V-Hull

Hull Color: White

Interior Designer: Evan Marshall

Engine Information

Engines: 4

Manufacturer: Mercury

Engine Type: Outboard

Fuel Type: Gas/Petrol

PHOTOS

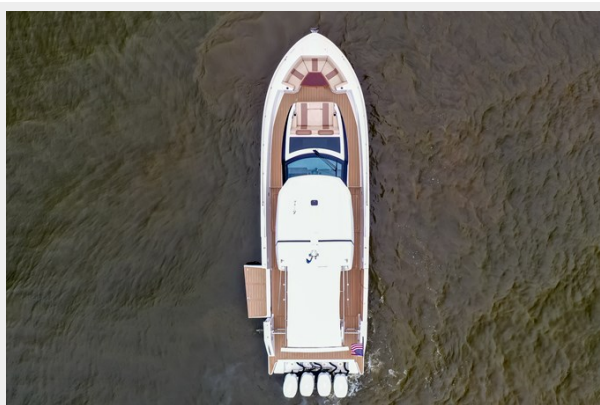
DJI_0589



DJI_0655



DJI_0602



DJI_0613



DJI_0643



DJI_0600



DJI_0611-Edit



DJI_0650-Edit



DJI_0591



DJI_0635-Edit



DSC_6692



DSC_6588



DSC_6677



DSC_6572



DSC_6733



DSC_6579



DSC_6594



DSC_6614



DSC_6662



DSC_6649



DSC_6652



DSC_6669



DSC_6969



DSC_6542



DSC_6369



DSC_6367-2



DSC_6428



DSC_6408-2-Edit



DSC_6424-Edit



DSC_6394



DSC_6386



DSC_6392



DSC_6358



DSC_6451



DSC_8644



DSC_6514



DSC_6335



DSC_6343-2



DSC_6485-Edit



DSC_6487-Edit



DSC_6891



DSC_6756



DSC_6817-Edit-Edit



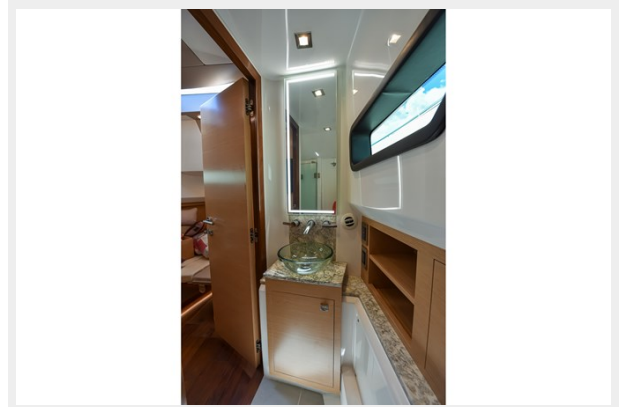
DSC_6867-Edit



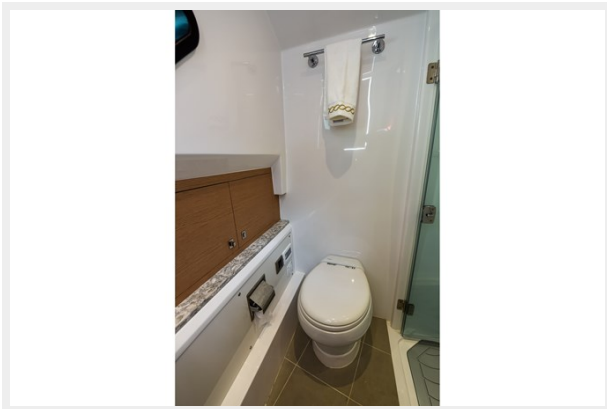
DSC_6823-Edit



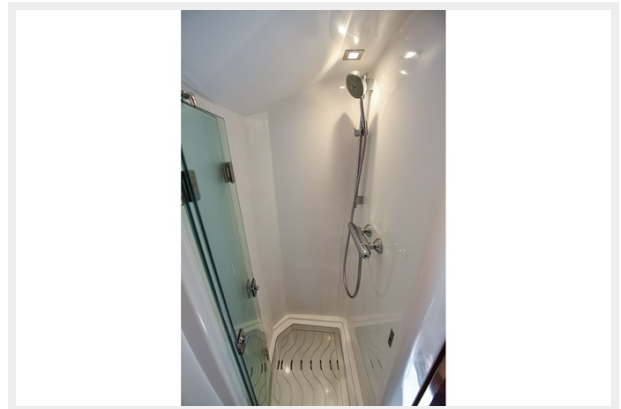
DSC_6927-Edit



DSC_6951-Edit



DSC_6938-Edit



DSC_6990



DSC_6599



CONTACTS

Andrey Shestakov, leading yacht broker of the sales department of Shestakov Yacht Sales Inc. Shestakov Yacht Sales Inc., the official representative of the Miami/Fort Lauderdale FL headquarters.

Contact details

Email: andrey@shestakovyachtsales.com

Web: shestakovyachtsales.com/en/

Telephones

USA: +1(954)274-4435

Office hours

Monday – Saturday: **9:00 - 21:00** EDT

Sunday: **closed**

Address



Harbour Towne Marina, 850 NE 3rd St,
STE 213, Dania, FL 33004