

CYGNUS II — CUSTOM



Builder: CUSTOM

Year Built: 1930

Model: Motor Yacht

Price: PRICE ON APPLICATION

Location: United States

LOA: 56' (17.07mm)

Beam: 13.5

Min Draft: 3' 6" (1.07mm)

Max Draft: 4' (1.22mm)

Cruise Speed: 9 Knots Kts. (10 MPH)

Max Speed: 12 Knots Kts. (14 MPH)

Our experienced yacht broker, Andrey Shestakov, will help you choose and buy a yacht that best suits your needs **Cygnus II — CUSTOM** from our catalogue. Presently, at Shestakov Yacht Sales Inc., we have a wide variety of yachts available on our sale's list. We also work in close contact with all the big yacht manufacturers from all over the world.

If you would like to buy a yacht **Cygnus II — CUSTOM** or would like help answering any questions concerning purchasing, selling or chartering a yacht, please call **+1(954)274-4435**

TABLE OF CONTENTS

| | |
|--|---|
| TABLE OF CONTENTS | 2 |
| SPECIFICATIONS | 5 |
| Overview | 5 |
| Basic Information | 5 |
| Dimensions | 5 |
| Speed, Capacities and Weight | 5 |
| Accommodations | 5 |
| Hull and Deck Information | 5 |
| Engine Information | 6 |
| PHOTOS | 7 |
| 0_2783040_cygnus_ii_starboard_profile1 | 7 |
| 1_2783040_cygnus_ii_starboard_profile2 | 7 |
| 3_2783040_cygnus_ii_starboard_forward_profile2 | 7 |
| 2_2783040_cygnus_ii_starboard_forward_profile1 | 7 |
| 4_2783040_cygnus_ii_starboard_forward_profile3 | 7 |
| 5_2783040_cygnus_ii_port_forward_profile | 7 |
| 7_2783040_cygnus_ii_aft_profile | 8 |
| 6_2783040_cygnus_ii_port_aft_profile | 8 |
| 8_2783040_cygnus_ii_anchor_windlass | 8 |
| 9_2783040_cygnus_ii_foredeck | 8 |
| 11_2783040_cygnus_ii_port_side_deck1 | 8 |
| 10_2783040_cygnus_ii_foredeck_aft | 8 |
| 12_2783040_cygnus_ii_port_side_deck2 | 9 |
| 13_2783040_cygnus_ii_starboard_side_deck1 | 9 |
| 14_2783040_cygnus_ii_starboard_side_deck2 | 9 |
| 15_2783040_cygnus_ii_starboard_side_deck3 | 9 |
| 16_2783040_cygnus_ii_aftdeck1 | 9 |
| 17_2783040_cygnus_ii_aftdeck2 | 9 |

| | |
|---|----|
| 18_2783040_cygnus_ii_aftdeck3 | 10 |
| 19_2783040_cygnus_ii_aftdeck4 | 10 |
| 20_2783040_cygnus_ii_aftdeck_port | 10 |
| 21_2783040_cygnus_ii_aftdeck_starboard | 10 |
| 22_2783040_cygnus_ii_aftdeck_forward1 | 10 |
| 23_2783040_cygnus_ii_aftdeck_forward2 | 10 |
| 24_2783040_cygnus_ii_tender1 | 11 |
| 25_2783040_cygnus_ii_tender2 | 11 |
| 26_2783040_cygnus_ii_tender3 | 11 |
| 27_2783040_cygnus_ii_tender4 | 11 |
| 28_2783040_cygnus_ii_pilothouse1 | 11 |
| 29_2783040_cygnus_ii_pilothouse2 | 11 |
| 30_2783040_cygnus_ii_pilothouse_port1 | 12 |
| 31_2783040_cygnus_ii_pilothouse_port2 | 12 |
| 32_2783040_cygnus_ii_pilothouse_starboard | 12 |
| 33_2783040_cygnus_ii_pilothouse_aft | 12 |
| 35_2783040_cygnus_ii_pilothouse_helm2 | 12 |
| 34_2783040_cygnus_ii_pilothouse_helm1 | 12 |
| 36_2783040_cygnus_ii_starboard_engine_control | 13 |
| 37_2783040_cygnus_ii_pilothouse_aft_seating | 13 |
| 38_2783040_cygnus_ii_pilothouse_port_seating | 13 |
| 39_2783040_cygnus_ii_pilothouse_starboard_seating | 13 |
| 40_2783040_cygnus_ii_salon_forward1 | 13 |
| 41_2783040_cygnus_ii_salon_forward2 | 13 |
| 42_2783040_cygnus_ii_salon_aft | 14 |
| 43_2783040_cygnus_ii_salon_port1 | 14 |
| 45_2783040_cygnus_ii_salon_starboard | 14 |
| 44_2783040_cygnus_ii_salon_port2 | 14 |
| 46_2783040_cygnus_ii_salon_seating | 14 |

| | |
|--|----|
| 47_2783040_cygnus_ii_champagne_service | 14 |
| 48_2783040_cygnus_ii_galley | 15 |
| 49_2783040_cygnus_ii_galley_aft | 15 |
| 50_2783040_cygnus_ii_galley_port | 15 |
| 51_2783040_cygnus_ii_galley_starboard1 | 15 |
| 52_2783040_cygnus_ii_galley_starboard2 | 15 |
| 53_2783040_cygnus_ii_master_stateroom | 15 |
| 54_2783040_cygnus_ii_master_stateroom_port | 16 |
| 55_2783040_cygnus_ii_master_stateroom_starboard1 | 16 |
| 57_2783040_cygnus_ii_master_stateroom_forward | 16 |
| 56_2783040_cygnus_ii_master_stateroom_starboard2 | 16 |
| 58_2783040_cygnus_ii_master_stateroom_head | 16 |
| 59_2783040_cygnus_ii_guest_stateroom1 | 16 |
| 60_2783040_cygnus_ii_guest_stateroom2 | 17 |
| 61_2783040_cygnus_ii_guest_stateroom_head | 17 |
| 63_2783040_cygnus_ii_port_racor_fuel_filter | 17 |
| 62_2783040_cygnus_ii_port_main_engine | 17 |
| 65_2783040_cygnus_ii_starboard_racor_fuel_filter | 17 |
| 64_2783040_cygnus_ii_starboard_main_engine | 17 |
| 66_2783040_cygnus_ii_water_heater | 18 |
| 67_2783040_cygnus_ii_electrical_panel | 18 |
| 69_2783040_cygnus_ii_battery_charger | 18 |
| 68_2783040_cygnus_ii_generator | 18 |
| 70_2783040_cygnus_ii_show_award | 18 |
| CONTACTS | 19 |
| Contact details | 19 |
| Telephones | 19 |
| Office hours | 19 |
| Address | 19 |

SPECIFICATIONS

Overview

Cygnus II is a 1930 William Krumholz designed and Jakobson & Peterson built classic 56' Flattop motoryacht, with similar styling to Elco and Trumpy. She is owned by a very experienced and knowledgeable yachting couple who have decided it is time to move on to other life projects. If you are looking for a classic yacht that turns heads in any harbor, Cygnus II meets that requirement. She has been recognized at numerous prestigious shows, most recently as People's Choice winner at the 33rd annual Antique and Classic Boat Festival at the Chesapeake Bay Maritime Museum in St. Michaels, MD. Cygnus II has also been featured in several yachting magazines. She has been successfully chartered previously, but she is now used privately by her present owners. Cygnus II offers numerous upgrades, like her Yanmar 170 HP main engines, but her owners have also tried to maintain her classic equipment in working order.

Basic Information

Category: Motor Yacht

Model Year: 1930

Year Built: 1930

Country: United States

Dimensions

LOA: 56' (17.07mm)

Beam: 13.5

Min Draft: 3' 6" (1.07mm)

Max Draft: 4' (1.22mm)

Speed, Capacities and Weight

Cruise Speed: 9 Knots Kts. (10 MPH)

Max Speed: 12 Knots Kts. (14 MPH)

Water Capacity: 200 Gallons

Holding Tank: 20 Gal Gallons

Fuel Capacity: 400 Gal Gallons

Accommodations

Total Cabins: 2

Total Berths: 3

Total Heads: 2

Hull and Deck Information

Hull Material: Wood

Engine Information

Engines: 2

Manufacturer: Yanmar

Engine Type: Inboard

Fuel Type: Diesel

PHOTOS

0_2783040_cygnus_ii_starboard_profile1



1_2783040_cygnus_ii_starboard_profile2



2_2783040_cygnus_ii_starboard_forward_profile1



3_2783040_cygnus_ii_starboard_forward_profile2



4_2783040_cygnus_ii_starbaord_forward_profile3



5_2783040_cygnus_ii_port_forward_profile



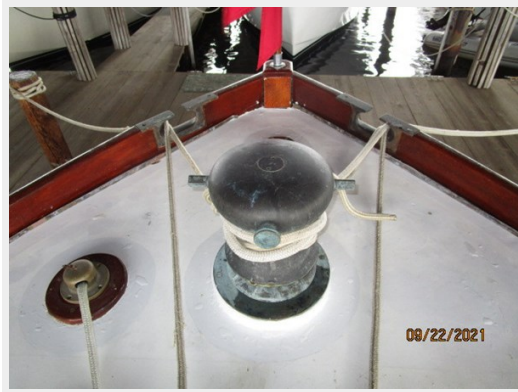
6_2783040_cygnus_ii_port_aft_profile



7_2783040_cygnus_ii_aft_profile



8_2783040_cygnus_ii_anchor_windlass



9_2783040_cygnus_ii_foredeck



10_2783040_cygnus_ii_foredeck_aft



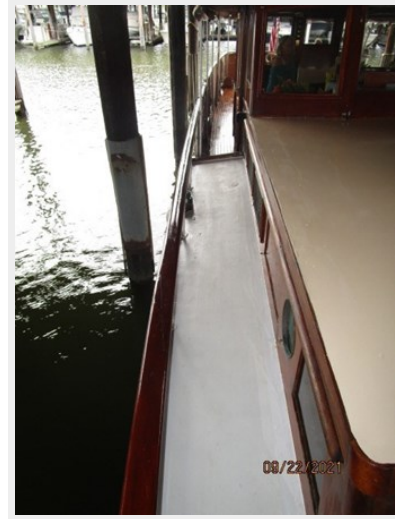
11_2783040_cygnus_ii_port_side_deck1



12_2783040_cygnus_ii_port_side_deck2



13_2783040_cygnus_ii_starboard_side_deck1



14_2783040_cygnus_ii_starboard_side_deck2



15_2783040_cygnus_ii_starboard_side_deck3



16_2783040_cygnus_ii_aftdeck1



17_2783040_cygnus_ii_aftdeck2



18_2783040_cygnus_ii_ aftdeck3



19_2783040_cygnus_ii_ aftdeck4



20_2783040_cygnus_ii_ aftdeck_port



21_2783040_cygnus_ii_ aftdeck_starboard



22_2783040_cygnus_ii_ aftdeck_forward1



23_2783040_cygnus_ii_ aftdeck_forward2



24_2783040_cygnus_ii_tender1



25_2783040_cygnus_ii_tender2



26_2783040_cygnus_ii_tender3



27_2783040_cygnus_ii_tender4



28_2783040_cygnus_ii_pilothouse1



29_2783040_cygnus_ii_pilothouse2



30_2783040_cygnus_ii_pilothouse_port1



31_2783040_cygnus_ii_pilothouse_port2



32_2783040_cygnus_ii_pilothouse_starboard



33_2783040_cygnus_ii_pilothouse_aft



34_2783040_cygnus_ii_pilothouse_helm1



35_2783040_cygnus_ii_pilothouse_helm2



36_2783040_cygnus_ii_starboard_engine_control



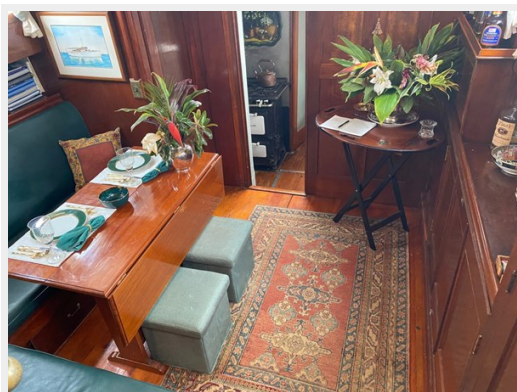
37_2783040_cygnus_ii_pilothouse_aft_seating



38_2783040_cygnus_ii_pilothouse_port_seating 39_2783040_cygnus_ii_pilothouse_starboard_seating



40_2783040_cygnus_ii_salon_forward1



41_2783040_cygnus_ii_salon_forward2



42_2783040_cygnus_ii_salon_aft



43_2783040_cygnus_ii_salon_port1



44_2783040_cygnus_ii_salon_port2



45_2783040_cygnus_ii_salon_starboard



46_2783040_cygnus_ii_salon_seating



47_2783040_cygnus_ii_champagne_service



48_2783040_cygnus_ii_galley



49_2783040_cygnus_ii_galley_aft



50_2783040_cygnus_ii_galley_port



51_2783040_cygnus_ii_galley_starboard1



52_2783040_cygnus_ii_galley_starboard2



53_2783040_cygnus_ii_master_stateroom



54_2783040_cygnus_ii_master_stateroom_port 55_2783040_cygnus_ii_master_stateroom_starboard1



56_2783040_cygnus_ii_master_stateroom_starboard2 57_2783040_cygnus_ii_master_stateroom_forward



58_2783040_cygnus_ii_master_stateroom_head



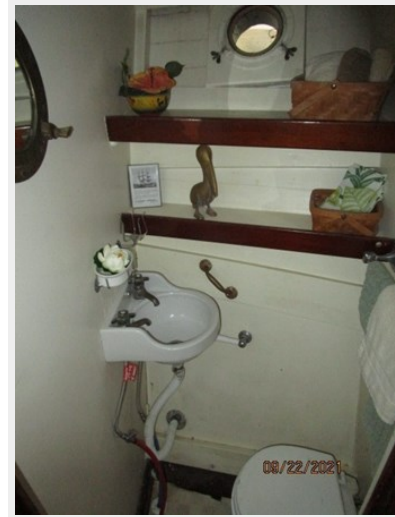
59_2783040_cygnus_ii_guest_stateroom1



60_2783040_cygnus_ii_guest_stateroom2



61_2783040_cygnus_ii_guest_stateroom_head



62_2783040_cygnus_ii_port_main_engine



63_2783040_cygnus_ii_port_racor_fuel_filter



64_2783040_cygnus_ii_starboard_main_engine



65_2783040_cygnus_ii_starboard_racor_fuel_filter



66_2783040_cygnus_ii_water_heater



67_2783040_cygnus_ii_electrical_panel



68_2783040_cygnus_ii_generator



69_2783040_cygnus_ii_battery_charger



70_2783040_cygnus_ii_show_award



CONTACTS

Andrey Shestakov, leading yacht broker of the sales department of Shestakov Yacht Sales Inc. Shestakov Yacht Sales Inc., the official representative of the Miami/Fort Lauderdale FL headquarters.

Contact details

Email:
andrey@shestakovyachtsales.com

Web: shestakovyachtsales.com/en/

Telephones

USA: +1(954)274-4435

Office hours

Monday – Saturday: **9:00 - 21:00 EDT**

Sunday: **closed**

Address



Harbour Towne Marina, 850 NE 3rd St,
STE 213, Dania, FL 33004