

Y-KNOT — SEA RAY



Builder: SEA RAY

Year Built: 1999

Model: Cruising Yacht

Price: PRICE ON APPLICATION

Location: United States

LOA: 34' (10.36mm)

Beam: 11.41

Max Draft: 2' 5" (0.74mm)

Cruise Speed: 20 Knots Kts. (23 MPH)

Max Speed: 30 Knots Kts. (35 MPH)

Our experienced yacht broker, Andrey Shestakov, will help you choose and buy a yacht that best suits your needs **Y-Knot — SEA RAY** from **our catalogue**. Presently, at **Shestakov Yacht Sales Inc.**, we have a wide variety of yachts available on **our sale's list**. We also work in close contact with all the big **yacht manufacturers** from all over the world.

If you would like to buy a yacht **Y-Knot — SEA RAY** or would like help answering any questions concerning purchasing, selling or chartering a yacht, please call **+1(954)274-4435**

TABLE OF CONTENTS

TABLE OF CONTENTS	2
SPECIFICATIONS	5
Overview	5
Basic Information	5
Dimensions	5
Speed, Capacities and Weight	5
Accommodations	5
Hull and Deck Information	6
Engine Information	6
PHOTOS	7
2	7
3	7
4	7
5	7
6	7
7	7
8	8
9	8
10	8
11	8
12	8
13	8
14	9
15	9
16	9
17	9
18	9
19	9

20	10
21	10
22	10
23	10
24	10
25	10
DSC03210	11
26	11
DSC03209	11
28	11
29	11
30	11
31	12
32	12
33	12
34	12
35	12
36	12
37	13
38	13
39	13
40	13
41	13
42	13
43	14
44	14
45	14
46	14
47	14

48	14
CONTACTS	15
Contact details	15
Telephones	15
Office hours	15
Address	15

SPECIFICATIONS

Overview

This vessel has been kept in *fresh water* its whole life. **It has had all of the regular engine maintenance completed with records available.** This model is a great layout both inside and out and has always been one of Sea Ray's best sellers. This is an opportunity to get into a comfortable family cruiser without breaking the bank. Call today and start making your boating plans! ***SELLER SAYS TO BRING ALL OFFERS.....HIS FAMILY HAS OUTGROWN THIS ONE AND HE HAS FOUND HIS NEXT BOAT!***

Basic Information

Category: Cruising Yacht

Sub Category: Express

Model Year: 1999

Year Built: 1999

Country: United States

Dimensions

LOA: 34' (10.36mm)

Beam: 11.41

Max Draft: 2' 5" (0.74mm)

Speed, Capacities and Weight

Cruise Speed: 20 Knots Kts. (23 MPH) **Max Speed:** 30 Knots Kts. (35 MPH)

Water Capacity: 40 Gallons

Holding Tank: 28 Gal Gallons

Fuel Capacity: 225 Gal Gallons

Accommodations

Total Cabins: 2

Total Heads: 1

Hull and Deck Information

Hull Material: Fiberglass

Engine Information

Engines: 2

Manufacturer: Mercruiser

Engine Type: Inboard

Fuel Type: Gas

PHOTOS

2



3



4



5



6



7



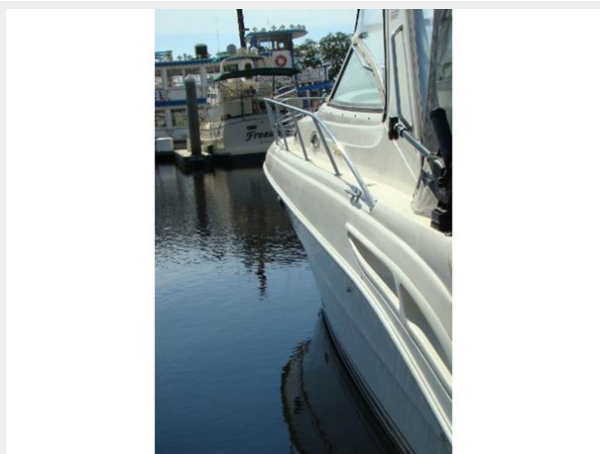
8



9



10



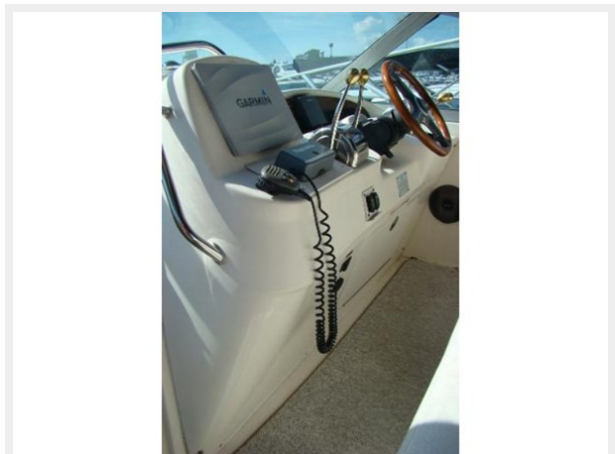
11



12



13



14



15



16



17



18



19



20



21



22



23



24



25



26



DSC03210



DSC03209



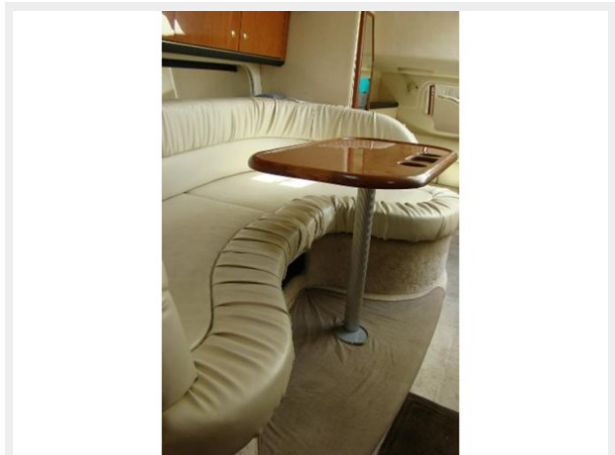
28



29



30



31



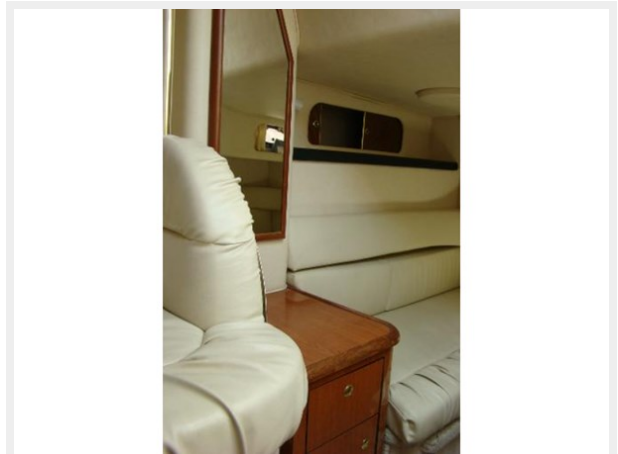
32



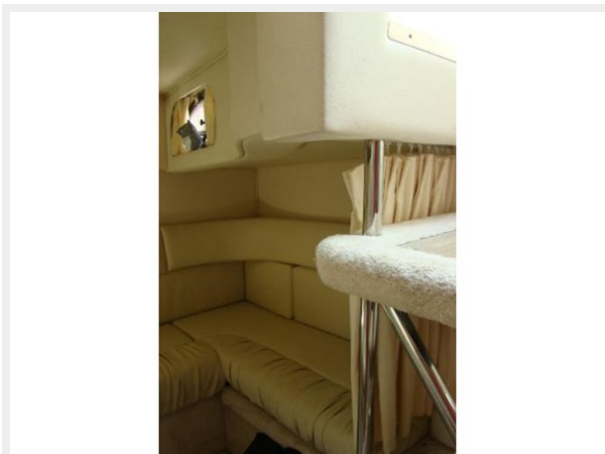
33



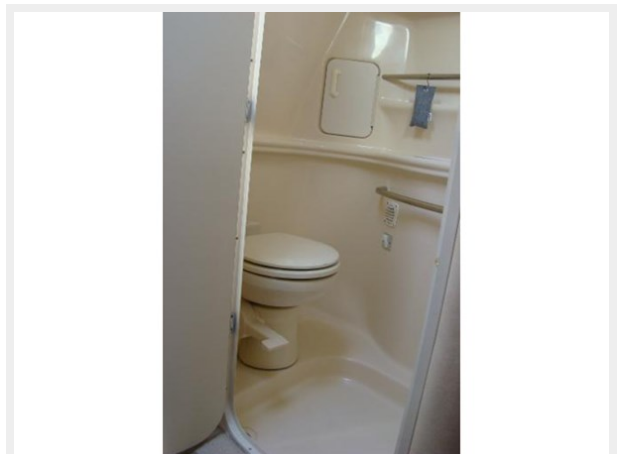
34



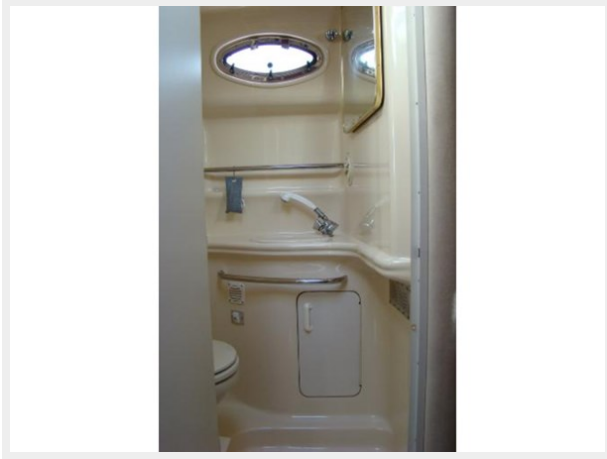
35



36



37



38



39



40



41



42



43



44



45



46



47



48



CONTACTS

Andrey Shestakov, leading yacht broker of the sales department of Shestakov Yacht Sales Inc. Shestakov Yacht Sales Inc., the official representative of the Miami/Fort Lauderdale FL headquarters.

Contact details

Email: **andrey@shestakovyachtsales.com**

Web: shestakovyachtsales.com/en/

Telephones

USA: **+1(954)274-4435**

Office hours

Monday – Saturday: **9:00 - 21:00** EDT

Sunday: **closed**

Address



Harbour Towne Marina, 850 NE 3rd St, STE 213, Dania, FL 33004