

LOCKDOWN — VIKING



Builder: [VIKING](#)

LOA: 64' (19.51m)

Year Built: 2008

Model: Sport Yacht

Price: PRICE ON APPLICATION

Location: United States

Our experienced yacht broker, Andrey Shestakov, will help you choose and buy a yacht that best suits your needs **Lockdown — VIKING** from our catalogue. Presently, at Shestakov Yacht Sales Inc., we have a wide variety of yachts available on our sale's list. We also work in close contact with all the big yacht manufacturers from all over the world.

If you would like to buy a yacht **Lockdown — VIKING** or would like help answering any questions concerning purchasing, selling or chartering a yacht, please call **+1(954)274-4435**

TABLE OF CONTENTS

| | |
|------------------------------------|---|
| TABLE OF CONTENTS | 2 |
| SPECIFICATIONS | 4 |
| Overview | 4 |
| Basic Information | 4 |
| Dimensions | 4 |
| Accommodations | 4 |
| Hull and Deck Information | 4 |
| Engine Information | 4 |
| PHOTOS | 5 |
| 7905953_20210603085239230_1_XLARGE | 5 |
| 7905953_20210603084953463_1_XLARGE | 5 |
| 7905953_20210603085002018_1_XLARGE | 5 |
| 7905953_20210603085010153_1_XLARGE | 5 |
| 7905953_20210603085019393_1_XLARGE | 5 |
| 7905953_20210603085024380_1_XLARGE | 5 |
| 7905953_20210603085033284_1_XLARGE | 6 |
| 7905953_20210603085037955_1_XLARGE | 6 |
| 7905953_20210603085047789_1_XLARGE | 6 |
| 7905953_20210603085043089_1_XLARGE | 6 |
| 7905953_20210603085053144_1_XLARGE | 6 |
| 7905953_20210603085102898_1_XLARGE | 6 |
| 7905953_20210603085108223_1_XLARGE | 7 |
| 7905953_20210603085113322_1_XLARGE | 7 |
| 7905953_20210603085118161_1_XLARGE | 7 |
| 7905953_20210603085122627_1_XLARGE | 7 |
| 7905953_20210603085126723_1_XLARGE | 7 |
| 7905953_20210603085131902_1_XLARGE | 7 |
| 7905953_20210603085135371_1_XLARGE | 8 |

| | |
|------------------------------------|-----------|
| 7905953_20210603085147510_1_XLARGE | 8 |
| 7905953_20210603085152230_1_XLARGE | 8 |
| 7905953_20210603085156431_1_XLARGE | 8 |
| 7905953_20210603085200305_1_XLARGE | 8 |
| 7905953_20210603085204060_1_XLARGE | 8 |
| 7905953_20210603085208178_1_XLARGE | 9 |
| 7905953_20210603085218891_1_XLARGE | 9 |
| 7905953_20210603085222328_1_XLARGE | 9 |
| 7905953_20210603085234976_1_XLARGE | 9 |
| 7905953_20210603085243837_1_XLARGE | 9 |
| 7905953_20210603085241694_1_XLARGE | 9 |
| 7905953_20210603090022270_1_XLARGE | 10 |
| 7905953_20210603090031026_1_XLARGE | 10 |
| 7905953_20210603090034129_1_XLARGE | 10 |
| 7905953_20210603090036852_1_XLARGE | 10 |
| 7905953_20210603090040074_1_XLARGE | 11 |
| 7905953_20210603090025136_1_XLARGE | 11 |
| 7905953_20210603090028270_1_XLARGE | 11 |
| 7905953_20210603090043449_1_XLARGE | 11 |
| CONTACTS | 12 |
| Contact details | 12 |
| Telephones | 12 |
| Office hours | 12 |
| Address | 12 |

SPECIFICATIONS

Overview

Lockdown is a 2008 64 Viking with CAT C32 Engines, she has been kept in excellent working order with all services up to date and hull has been recently painted for a new look. Lockdown ready for its next owner.

Basic Information

Category: Sport Yacht

Model Year: 2008

Year Built: 2008

Country: United States

Dimensions

LOA: 64' (19.51mm)

Accommodations

Total Cabins: 4

Total Heads: 3

Hull and Deck Information

Hull Material: Fiberglass

Engine Information

Engines: 2

Manufacturer: CAT

Engine Type: Inboard

Fuel Type: Diesel

PHOTOS

7905953_20210603085239230_1_XLARGE



7905953_20210603084953463_1_XLARGE



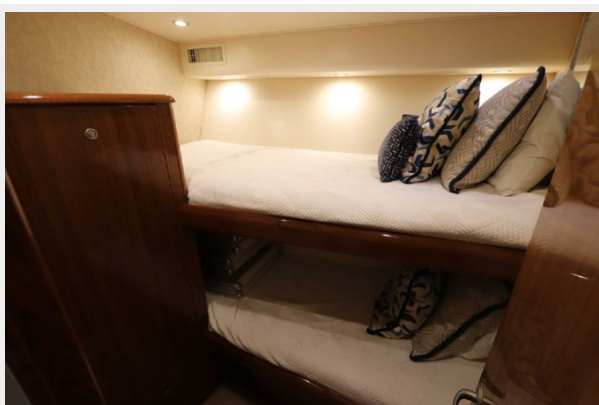
7905953_20210603085002018_1_XLARGE



7905953_20210603085010153_1_XLARGE



7905953_20210603085019393_1_XLARGE



7905953_20210603085024380_1_XLARGE



7905953_20210603085033284_1_XLARGE



7905953_20210603085037955_1_XLARGE



7905953_20210603085047789_1_XLARGE



7905953_20210603085043089_1_XLARGE



7905953_20210603085053144_1_XLARGE



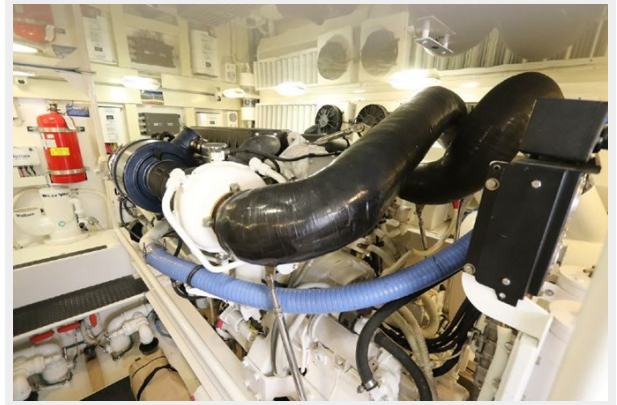
7905953_20210603085102898_1_XLARGE



7905953_20210603085108223_1_XLARGE



7905953_20210603085113322_1_XLARGE



7905953_20210603085118161_1_XLARGE



7905953_20210603085122627_1_XLARGE



7905953_20210603085126723_1_XLARGE



7905953_20210603085131902_1_XLARGE



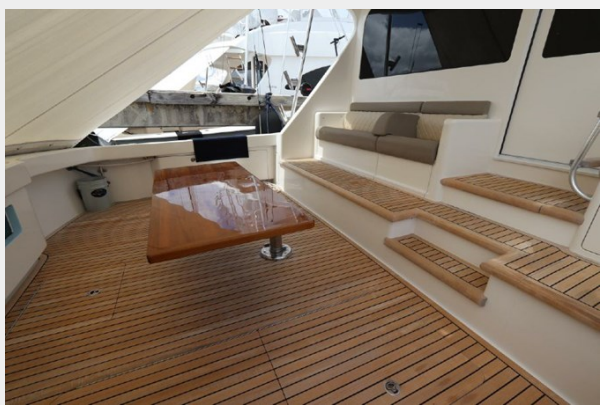
7905953_20210603085135371_1_XLARGE



7905953_20210603085147510_1_XLARGE



7905953_20210603085152230_1_XLARGE



7905953_20210603085156431_1_XLARGE



7905953_20210603085200305_1_XLARGE



7905953_20210603085204060_1_XLARGE



7905953_20210603085208178_1_XLARGE



7905953_20210603085218891_1_XLARGE



7905953_20210603085222328_1_XLARGE



7905953_20210603085234976_1_XLARGE



7905953_20210603085241694_1_XLARGE



7905953_20210603085243837_1_XLARGE



7905953_20210603090022270_1_XLARGE



7905953_20210603090031026_1_XLARGE



7905953_20210603090034129_1_XLARGE



7905953_20210603090036852_1_XLARGE



7905953_20210603090040074_1_XLARGE



7905953_20210603090025136_1_XLARGE



7905953_20210603090028270_1_XLARGE



7905953_20210603090043449_1_XLARGE



CONTACTS

Andrey Shestakov, leading yacht broker of the sales department of Shestakov Yacht Sales Inc. Shestakov Yacht Sales Inc., the official representative of the Miami/Fort Lauderdale FL headquarters.

Contact details

Email: andrey@shestakovyachtsales.com

Web: shestakovyachtsales.com/en/

Telephones

USA: +1(954)274-4435

Office hours

Monday – Saturday: **9:00 - 21:00** EDT

Sunday: **closed**

Address



Harbour Towne Marina, 850 NE 3rd St,
STE 213, Dania, FL 33004