

## TLC — MAINSHIP



**Builder:** MAINSHIP

**Year Built:** 2004

**Model:** Cruising Yacht

**Price:** PRICE ON APPLICATION

**LOA:** 34' (10.36mm)

**Beam:** 12.25

**Max Draft:** 3' 3" (0.99mm)

Our experienced yacht broker, Andrey Shestakov, will help you choose and buy a yacht that best suits your needs **TLC — MAINSHIP** from our catalogue. Presently, at **Shestakov Yacht Sales Inc.**, we have a wide variety of yachts available on our sale's list. We also work in close contact with all the big yacht manufacturers from all over the world.

If you would like to buy a yacht **TLC — MAINSHIP** or would like help answering any questions concerning purchasing, selling or chartering a yacht, please call **+1(954)274-4435**

# TABLE OF CONTENTS

TABLE OF CONTENTS	2
SPECIFICATIONS	4
Overview	4
Basic Information	4
Dimensions	4
Speed, Capacities and Weight	4
Accommodations	4
Hull and Deck Information	5
Engine Information	5
PHOTOS	6
Mainship 34 - TLC - - 1	6
Mainship 34 - TLC - - 7	6
Mainship 34 - TLC - - 8	6
Mainship 34 - TLC - - 9	6
Mainship 34 - TLC - - 10	6
Mainship 34 - TLC - - 11	6
Mainship 34 - TLC - - 12	7
Mainship 34 - TLC - - 13	7
Mainship 34 - TLC - - 14	7
Mainship 34 - TLC - - 15	7
Mainship 34 - TLC - - 16	7
Mainship 34 - TLC - - 17	7
Mainship 34 - TLC - - 18	8
Mainship 34 - TLC - - 19	8
Mainship 34 - TLC - - 20	8
Mainship 34 - TLC - - 21	8
Mainship 34 - TLC - - 22	8
Mainship 34 - TLC - - 23	8

---

Mainship 34 - TLC - - 24	9
Mainship 34 - TLC - - 25	9
Mainship 34 - TLC - - 26	9
Mainship 34 - TLC - - 27	9
Mainship 34 - TLC - - 28	9
Mainship 34 - TLC - - 29	9
Mainship 34 - TLC - - 30	10
Mainship 34 - TLC - - 31	10
Mainship 34 - TLC - - 33	10
Mainship 34 - TLC - - 32	10
Mainship 34 - TLC - - 34	11
Mainship 34 - TLC - - 35	11
Mainship 34 - TLC - - 36	11
Mainship 34 - TLC - - 37	11
CONTACTS	12
Contact details	12
Telephones	12
Office hours	12
Address	12

---

---

# SPECIFICATIONS

---

## Overview

---

PRELIMINARY LISTING - FULL LISTING TO FOLLOW AT THE END OF THE WEEK

"TLC" is a very nice, clean, Mainship Pilot 32. With her comfortable layout, bow thruster, new electronics and low hours, she is a perfect match for a cruising couple or for family outings on the bay. She shows extremely well and won't last long, so call to schedule a showing today!

## Basic Information

---

**Category:** Cruising Yacht

**Sub Category:** Downeast

**Model Year:** 2004

**Year Built:** 2004

## Dimensions

---

**LOA:** 34' (10.36mm)

**Beam:** 12.25

**Max Draft:** 3' 3" (0.99mm)

## Speed, Capacities and Weight

---

**Water Capacity:** 70 Gallons

**Fuel Capacity:** 250 Gal Gallons

## Accommodations

---

**Total Cabins:** 1

**Total Berths:** 2

**Total Heads:** 1

---

## Hull and Deck Information

---

**Hull Material:** Fiberglass

---

## Engine Information

---

**Engines:** 1

**Manufacturer:** Yanmar

**Engine Type:** Inboard

**Fuel Type:** Diesel

# PHOTOS

**Mainship 34 - TLC - - 1**



**Mainship 34 - TLC - - 7**



**Mainship 34 - TLC - - 8**



**Mainship 34 - TLC - - 9**



**Mainship 34 - TLC - - 10**



**Mainship 34 - TLC - - 11**





**Mainship 34 - TLC - - 12**



**Mainship 34 - TLC - - 13**



**Mainship 34 - TLC - - 14**



**Mainship 34 - TLC - - 15**



**Mainship 34 - TLC - - 16**



**Mainship 34 - TLC - - 17**





**Mainship 34 - TLC - - 18**



**Mainship 34 - TLC - - 19**



**Mainship 34 - TLC - - 20**



**Mainship 34 - TLC - - 21**



**Mainship 34 - TLC - - 22**



**Mainship 34 - TLC - - 23**





**Mainship 34 - TLC - - 24**



**Mainship 34 - TLC - - 25**



**Mainship 34 - TLC - - 26**



**Mainship 34 - TLC - - 27**



**Mainship 34 - TLC - - 28**



**Mainship 34 - TLC - - 29**



**Mainship 34 - TLC - - 30**



**Mainship 34 - TLC - - 31**



**Mainship 34 - TLC - - 33**



**Mainship 34 - TLC - - 32**





**Mainship 34 - TLC - - 34**



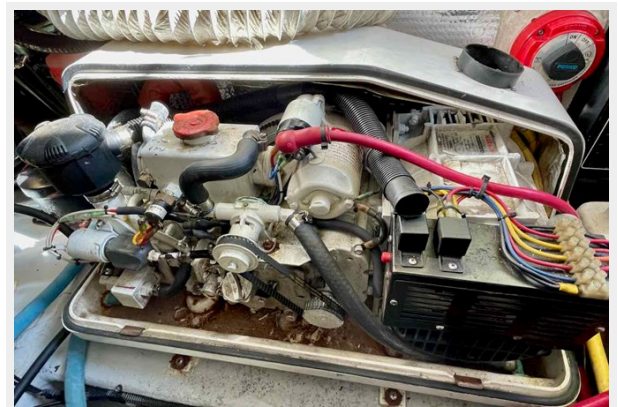
**Mainship 34 - TLC - - 35**



**Mainship 34 - TLC - - 36**



**Mainship 34 - TLC - - 37**





# CONTACTS

---

Andrey Shestakov, leading yacht broker of the sales department of Shestakov Yacht Sales Inc. Shestakov Yacht Sales Inc., the official representative of the Miami/Fort Lauderdale FL headquarters.

## Contact details

---

Email: **andrey@shestakovyachtsales.com**

Web: [shestakovyachtsales.com/en/](http://shestakovyachtsales.com/en/)

## Telephones

---

USA: **+1(954)274-4435**

## Office hours

---

Monday – Saturday: **9:00 - 21:00** EDT

Sunday: **closed**

## Address

---



Harbour Towne Marina, 850 NE 3rd St, STE 213, Dania, FL 33004