

MONAKANA — PURSUIT



Builder: PURSUIT

Year Built: 2000

Model: Sport Fisherman

Price: PRICE ON APPLICATION

Location: United States

LOA: 32' 8" (9.96mm)

Beam: 10.5

Min Draft: 2' 10" (0.86mm)

Cruise Speed: 21 Knots Kts. (24 MPH)

Max Speed: 30 Knots Kts. (35 MPH)

Our experienced yacht broker, Andrey Shestakov, will help you choose and buy a yacht that best suits your needs **MONAKANA — PURSUIT** from our catalogue. Presently, at Shestakov Yacht Sales Inc., we have a wide variety of yachts available on our sale's list. We also work in close contact with all the big yacht manufacturers from all over the world.

If you would like to buy a yacht **MONAKANA — PURSUIT** or would like help answering any questions concerning purchasing, selling or chartering a yacht, please call +1(954)274-4435

TABLE OF CONTENTS

TABLE OF CONTENTS	2
SPECIFICATIONS	6
Overview	6
Basic Information	6
Dimensions	6
Speed, Capacities and Weight	6
Accommodations	6
Hull and Deck Information	7
Engine Information	7
PHOTOS	8
Functional bow and side rails	8
Secure for a weekend at the islands	8
Oversize windshield with vents	8
Good gelcoat	8
Three-side enclosure	9
Clean, spacious bow	9
Molded bow pulpit with roller	9
Bow roller and anchor	9
Windlass controls, anchor locker	10
Lewmar windlass with foot switches	10
Anchor locker, chain/line rode	10
Factory hardtop, rocket launchers	10
10 rocket launchers, cockpit LED flood	11
Underside of hardtop with light bar	11
Molded step to side deck	11
Spacious cockpit to starboard	11
Transom door and drop-down seating	11
Transom seating	11

In-sole fish box	12
Plenty of room!	12
Removeable fish box with macerator	12
Fish box removed	12
Port cockpit	12
Port gaff racks	12
Cockpit freshwater shower	13
Hardtop electric spotlight	13
Newer radar	13
Room for antennas/raft, etc.	13
Factory arch supporting hardtop	14
Helm deck, centerline companionway	14
Modular helm, tilts aft for electronics access	14
Port chart flat	14
Faria gauges, stereo controller	15
Plenty of space for modern electronics	15
Port engine hours	15
Starboard engine hours	15
Updated electronics	16
Simrad plotter/radar	16
Simrad autopilot	16
Lowrance color sounder	16
Rudder angle indicator	17
Standard VHF	17
Ritchie compass	17
Spotlight controls	17
Accessory switches	18
Windlass and trim tab controls	18
Helm breakers	18

Oversized, adjustable helm seat	18
Helmseat with locking stowage below	19
Adjustable pedestal base	19
Starboard helm seat module	19
Helm module stowage	19
Helm module sink and cutting board.	20
Cover over sink	20
Cockpit seat, to starboard	20
Under seat stowage	20
Port helm deck L-shaped seating	21
Under seating locking stowage	21
Port side bait tank	21
Under seat stowage	21
Bait tank	22
Forward V-berth double sleeping area	22
Under V-berth stowage, to starboard	22
SCUBA tank support hooks	22
Under V-berth stowage to port	23
Cabin overhead rod racks and hatches	23
Teak hanging locker	23
Cabin Kenwood stereo	23
Teak tabletop with inlay	24
Convertible dinette	24
Under dinette seating stowage	24
Dinette stowage	24
Cabin AC/DC distribution panels	25
Full-function galley	25
Electric cooktop	25
Built-in microwave	25

Molded galley sink	26
Granite Cote composite counter surfaces	26
AC/DC refer/freezer	26
Above sink stowage	26
AC/DC refer/freezer	27
Under counter galley stowage	27
Solid teak steps, with access under each	27
Under step stowage	27
Solid teak and holly sole	28
Custom Pursuit battery management system	28
Head with sink, shower, electric head	28
Molded sink with pull-out shower head	28
head stowage under sink	29
Head with opening port, full length mirror	29
Holding tank monitor	29
Day hatch for engine compartment access	29
Hel deck hatch lift gives unfettered access	30
Aft engine compartment	30
2016 MerCruiser, port	30
2016 MerCruiser, starboard	30
2016 Tides dripless shaft seals	30
CONTACTS	31
Contact details	31
Telephones	31
Office hours	31
Address	31

SPECIFICATIONS

Overview

MONAKANA is a premium sportfisher/family cruiser with style, quality, large cockpit area, and nicely appointed cabin. With her repower, she represents a great value in a top-tier boat. There is not a better boat made in this class and size. With all the right options, and accommodations for four, she is suitable for local entertaining, as well as following the fish offshore.

Basic Information

Category: Sport Fisherman

Model Year: 2000

Year Built: 2000

Refit Type: Re-power

Country: United States

Dimensions

LOA: 32' 8" (9.96mm)

Beam: 10.5

Min Draft: 2' 10" (0.86mm)

Speed, Capacities and Weight

Cruise Speed: 21 Knots Kts. (24 MPH)

Cruise Speed Range: 343

Max Speed: 30 Knots Kts. (35 MPH)

Max Speed Range: 299 Kts.

Water Capacity: 30 Gallons

Holding Tank: 9 Gal Gallons

Fuel Capacity: 218 Gal Gallons

Fuel Consumption: 14.2 Gal Gallons

Accommodations

Total Cabins: 1

Hull and Deck Information

Hull Material: Fiberglass

Deck Material: Fiberglass Sandwich

Hull Configuration: Modified Deep Vee

Hull Color: white

Hull Designer: John Garland

Engine Information

Engines: 2

Manufacturer: Mercury Mercruiser

Engine Type: Inboard

Fuel Type: Gas

PHOTOS

Secure for a weekend at the islands



Functional bow and side rails



Oversize windshield with vents



Good gelcoat



Three-side enclosure



Clean, spacious bow



Molded bow pulpit with roller



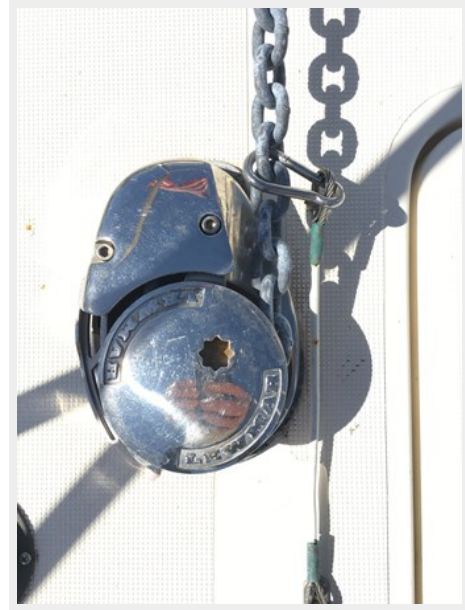
Bow roller and anchor



Windlass controls, anchor locker



Lewmar windlass with foot switches



Anchor locker, chain/line rode



Factory hardtop, rocket launchers



10 rocket launchers, cockpit LED flood



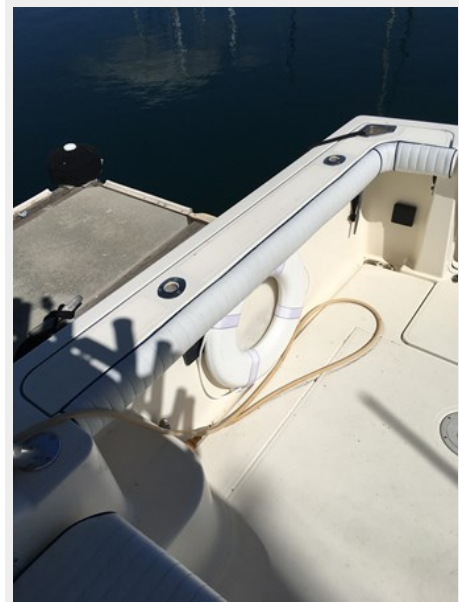
Underside of hardtop with light bar



Spacious cockpit to starboard



Molded step to side deck



Transom door and drop-down seating



Transom seating



Plenty of room!



In-sole fish box



Removeable fish box with macerator



Fish box removed



Port cockpit



Port gaff racks



Cockpit freshwater shower



Hardtop electric spotlight



Newer radar



Room for antennas/raft, etc.



Factory arch supporting hardtop



Helm deck, centerline companionway



Modular helm, tilts aft for electronics access

Port chart flat



Faria gauges, stereo controller

Plenty of space for modern electronics



Port engine hours



Starboard engine hours



Updated electronics



Simrad plotter/radar



Simrad autopilot



Lowrance color sounder



Standard VHF



Rudder angle indicator



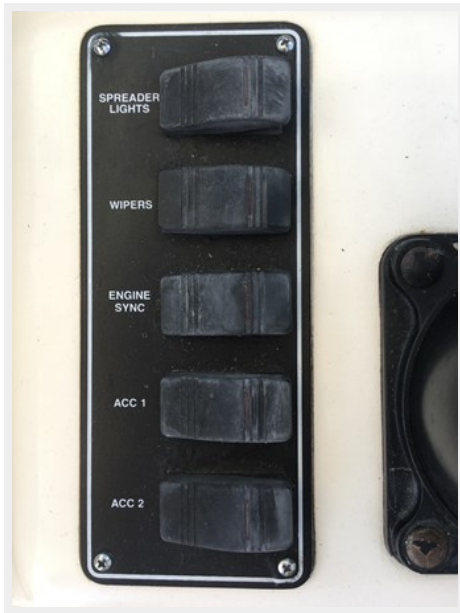
Spotlight controls



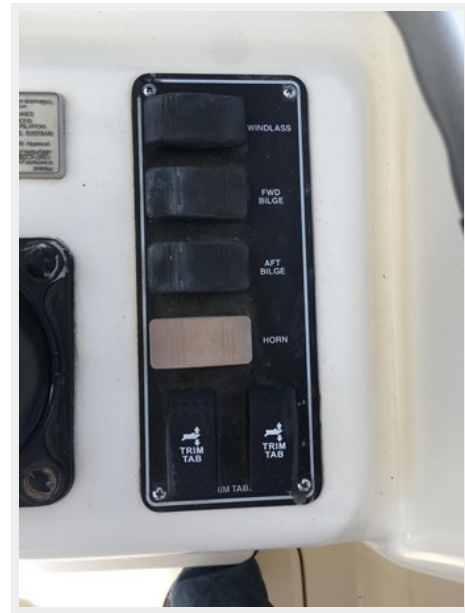
Ritchie compass



Accessory switches



Windlass and trim tab controls



Helm breakers



Oversized, adjustable helm seat



Helmseat with locking storage below



Adjustable pedestal base



Starboard helm seat module



Helm module stowage



Helm module sink and cutting board.



Cover over sink



Cockpit seat, to starboard



Under seat stowage



Port helm deck L-shaped seating



Under seating locking stowage



Under seat stowage



Port side bait tank



Bait tank



Forward V-berth double sleeping area



Under V-berth storage, to starboard



SCUBA tank support hooks



Under V-berth stowage to port



Cabin overhead rod racks and hatches



Teak hanging locker



Cabin Kenwood stereo



Convertible dinette



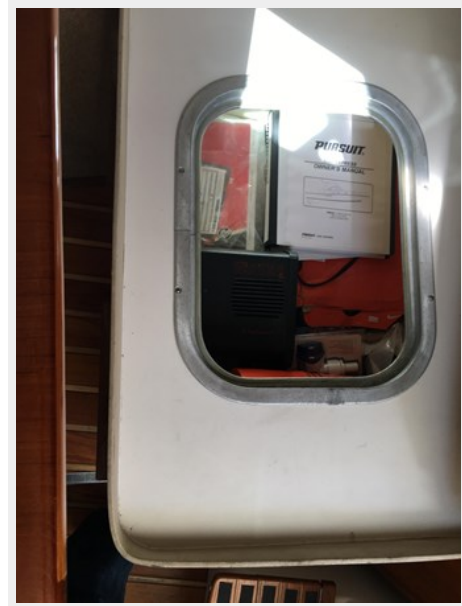
Teak tabletop with inlay



Under dinette seating stowage



Dinette stowage



Cabin AC/DC distribution panels



Full-function galley



Built-in microwave



Electric cooktop



Molded galley sink



Granite Cote composite counter surfaces



Above sink stowage



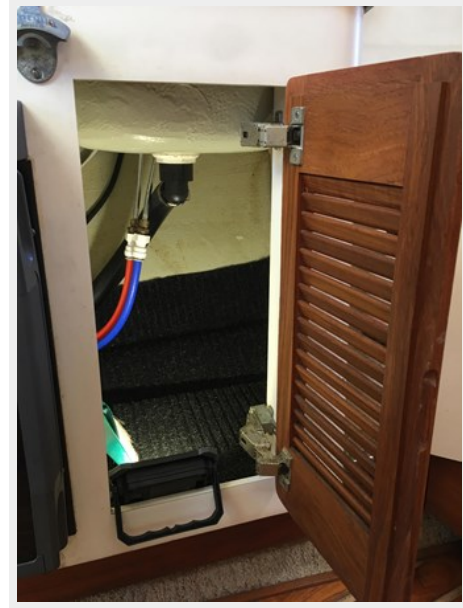
AC/DC refer/freezer



AC/DC refer/freezer



Under counter galley stowage



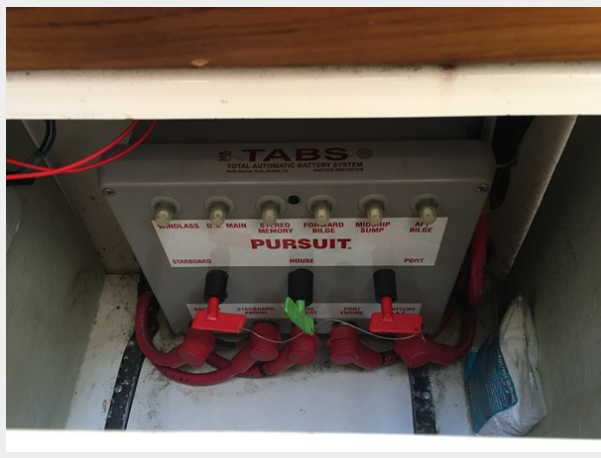
Solid teak steps, with access under each



Under step stowage



Custom Pursuit battery management system



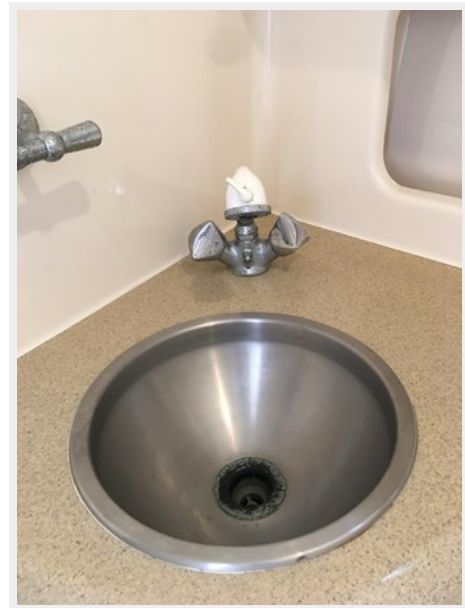
Solid teak and holly sole



Head with sink, shower, electric head



Molded sink with pull-out shower head



head stowage under sink



Head with opening port, full length mirror



Holding tank monitor



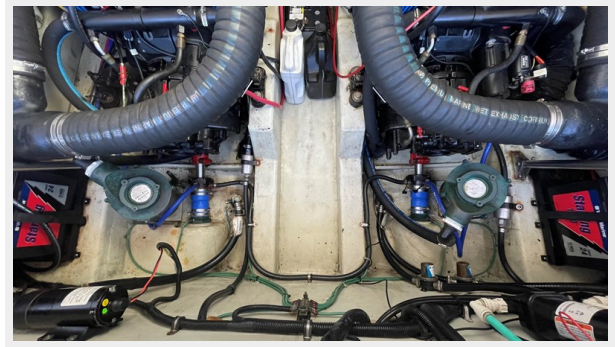
Day hatch for engine compartment access



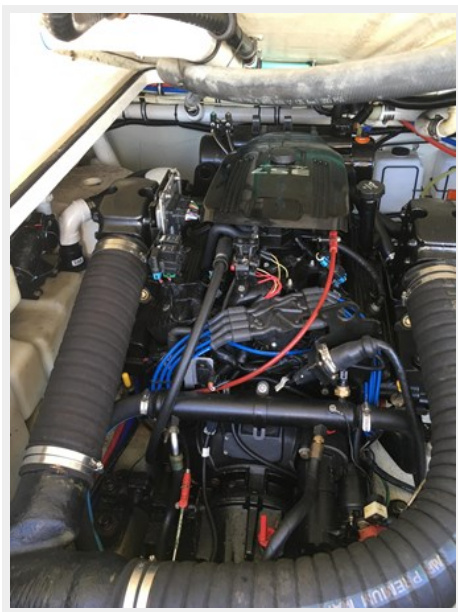
Hel deck hatch lift gives unfettered access



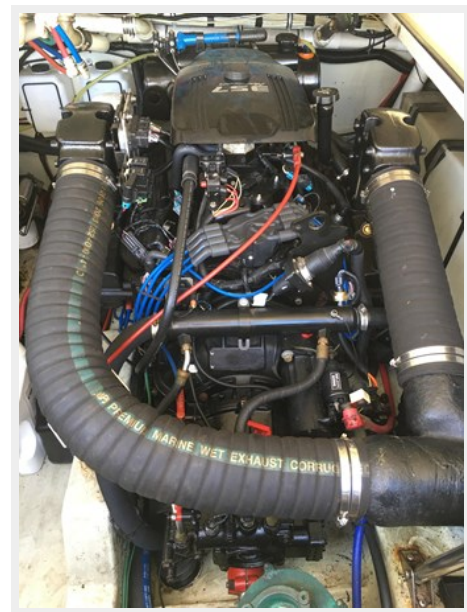
Aft engine compartment



2016 MerCruiser, port



2016 MerCruiser, starboard



2016 Tides dripless shaft seals



CONTACTS

Andrey Shestakov, leading yacht broker of the sales department of Shestakov Yacht Sales Inc. Shestakov Yacht Sales Inc., the official representative of the Miami/Fort Lauderdale FL headquarters.

Contact details

Email: andrey@shestakovyachtsales.com

Web: shestakovyachtsales.com/en/

Telephones

USA: +1(954)274-4435

Office hours

Monday – Saturday: **9:00 - 21:00** EDT

Sunday: **closed**

Address



Harbour Towne Marina, 850 NE 3rd St,
STE 213, Dania, FL 33004