

## CASSINELLA — ARNO LEOPARD



**Builder:** ARNO LEOPARD

**Year Built:** 2007

**Model:** Motor Yacht

**Price:** PRICE ON APPLICATION

**LOA:** 100' 5" (30.61mm)

**Beam:** 23

**Min Draft:** 3' 5" (1.04mm)

**Cruise Speed:** 30 Knots Kts. (35 MPH)

**Max Speed:** 36 Knots Kts. (41 MPH)

Our experienced yacht broker, Andrey Shestakov, will help you choose and buy a yacht that best suits your needs **Cassinella — ARNO LEOPARD** from **our catalogue**. Presently, at **Shestakov Yacht Sales Inc.**, we have a wide variety of yachts available on **our sale's list**. We also work in close contact with all the big **yacht manufacturers** from all over the world.

If you would like to buy a yacht **Cassinella — ARNO LEOPARD** or would like help answering any questions concerning purchasing, selling or chartering a yacht, please call **+1(954)274-4435**

---

# TABLE OF CONTENTS

---

TABLE OF CONTENTS	2
SPECIFICATIONS	6
Overview	6
Basic Information	6
Dimensions	6
Speed, Capacities and Weight	6
Accommodations	6
Hull and Deck Information	6
Engine Information	7
PHOTOS	8
DJI_0005	8
DJI_0007	8
DJI_0008	8
DJI_0012	8
DJI_0013	8
DJI_0032	8
DJI_0057	8
DJI_0113	8
DJI_0115	9
DJI_0134	9
DJI_0136	9
DJI_0138	9
SAM_0356	9
SAM_0365	9
SAM_0368	9
SAM_0371	9
SAM_0374	10
SAM_0377	10

---

SAM_0380	10
SAM_0383	10
SAM_0386	10
SAM_0389	10
SAM_0392	11
SAM_0395	11
SAM_0399	11
SAM_0402	11
SAM_0408	11
SAM_0413	11
SAM_0327	12
SAM_0330	12
SAM_0256	12
SAM_0333	12
SAM_0259	12
SAM_0335	12
SAM_0338	13
SAM_0344	13
SAM_0353	13
SAM_0347	13
SAM_0306	13
SAM_0309	13
SAM_0324	14
SAM_0312	14
101_leopard_aft_deck1	14
101_leopard_aft_deck2	14
101_leopard_aft_deck3	14
101_leopard_aft_deck4	14
101_leopard_aft_deck5	15

---

---

101_leopard_aft_deck6	15
101_leopard_aft_deck7	15
101_leopard_aft_deck8	15
101_leopard_aft_deck9	15
101_leopard_aft_deck10	15
101_leopard_aft_deck11	16
101_leopard_garage1	16
101_leopard_garage2	16
101_leopard_garage3	16
101_leopard_hallway2	16
101_leopard_hallway3	16
101_leopard_hallway1	17
101_leopard_hallway4	17
101_leopard_master_stateroom1	17
101_leopard_master_head1	17
101_leopard_master_head2	18
101_leopard_master_head3	18
101_leopard_master_head4	18
101_leopard_master_head5	18
101_leopard_master_head6	19
101_leopard_master_stateroom2	19
101_leopard_master_stateroom4	19
101_leopard_master_stateroom6	19
101_leopard_port_guest_head2	19
101_leopard_port_guest_head1	19
101_leopard_port_guest_head3	20
101_leopard_port_guest_head4	20
101_leopard_starboard_guest_head1	20
101_leopard_port_guest_stateroom4	20

---

---

101_leopard_starboard_guest_head2	21
101_leopard_starboard_guest_head3	21
101_leopard_starboard_guest_head4	21
101_leopard_starboard_guest_head5	21
101_leopard_starboard_guest_stateroom4	22
101_leopard_starboard_guest_stateroom3	22
101_leopard_swim_platform1	22
101_leopard_forward_stateroom1	22
101_leopard_forward_stateroom2	22
101_leopard_forward_stateroom3	22
101_leopard_forward_head1	23
101_leopard_forward_stateroom4	23
101_leopard_forward_head2	23
101_leopard_forward_head3	23
101_leopard_forward_head4	24
101_leopard_forward_head5	24
101_leopard_forward_stateroom5	24
CONTACTS	25
Contact details	25
Telephones	25
Office hours	25
Address	25

---

# SPECIFICATIONS

---

## Overview

---

N/A

## Basic Information

---

**Category:** Motor Yacht

**Sub Category:** Mega Yacht

**Model Year:** 2007

**Year Built:** 2007

## Dimensions

---

**LOA:** 100' 5" (30.61mm)

**Beam:** 23

**Min Draft:** 3' 5" (1.04mm)

## Speed, Capacities and Weight

---

**Cruise Speed:** 30 Knots Kts. (35 MPH) **Cruise Speed Range:** 440

**Max Speed:** 36 Knots Kts. (41 MPH) **Gross Tonnage:** 149 Pounds

**Water Capacity:** 369 Gallons **Holding Tank:** 224 Gal Gallons

**Fuel Capacity:** 2522 Gal Gallons

## Accommodations

---

**Total Cabins:** 4

## Hull and Deck Information

---

**Hull Material:** GRP

**Deck Material:** Teak

**Exterior Designer:** Arno Leopard

**Interior Designer:** Andrea Bacigalupo

---

## Engine Information

---

**Engines:** 1

**Manufacturer:** MTU

# PHOTOS

DJI\_0005



DJI\_0007



DJI\_0008



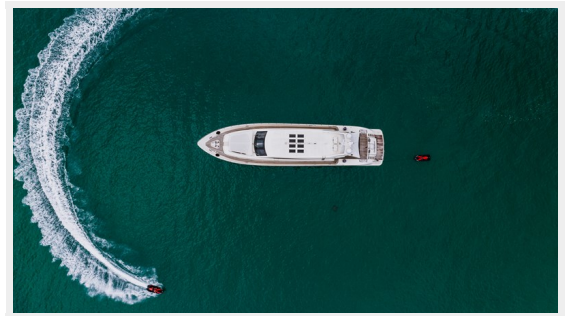
DJI\_0012



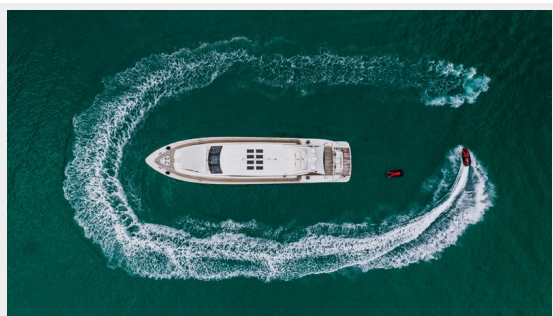
DJI\_0013



DJI\_0032



DJI\_0057



DJI\_0113





DJI\_0115



DJI\_0134



DJI\_0136



DJI\_0138



SAM\_0356



SAM\_0365



SAM\_0368



SAM\_0371



**SAM\_0374**



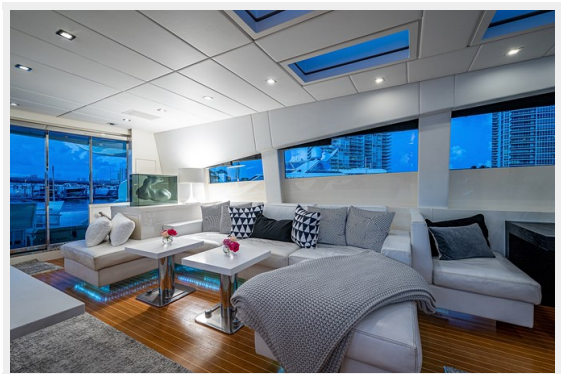
**SAM\_0377**



**SAM\_0380**



**SAM\_0383**



**SAM\_0386**



**SAM\_0389**





**SAM\_0392**



**SAM\_0395**



**SAM\_0399**



**SAM\_0402**



**SAM\_0408**



**SAM\_0413**



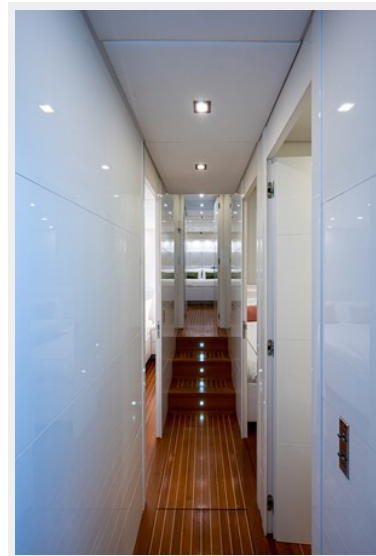
**SAM\_0327**



**SAM\_0330**



**SAM\_0256**



**SAM\_0333**



**SAM\_0259**



**SAM\_0335**





**SAM\_0338**



**SAM\_0344**



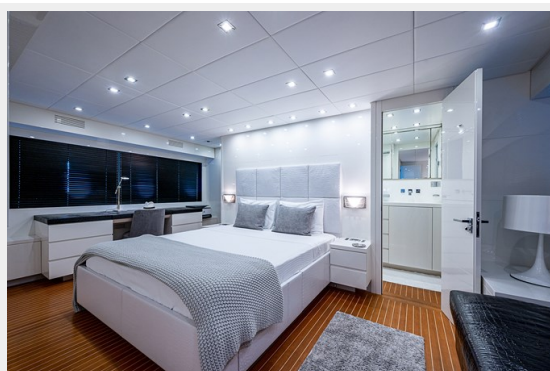
**SAM\_0353**



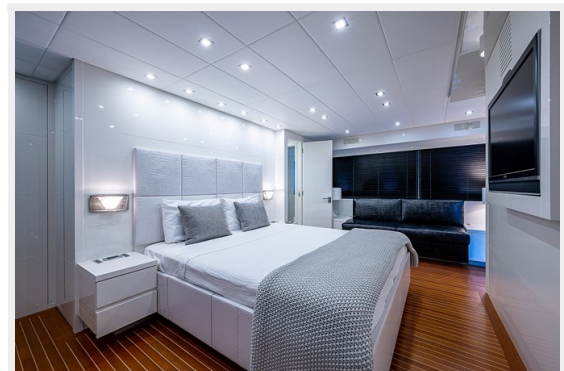
**SAM\_0347**



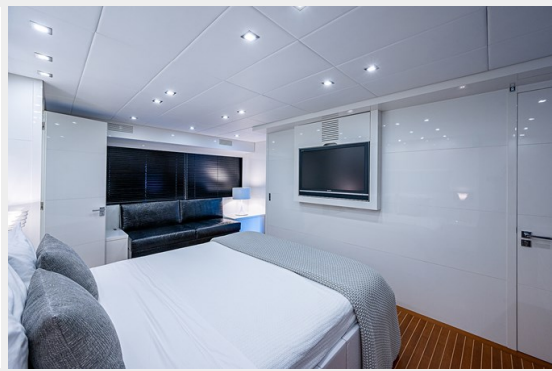
**SAM\_0306**



**SAM\_0309**



**SAM\_0312**



**SAM\_0324**



**101\_leopard\_aft\_deck1**



**101\_leopard\_aft\_deck2**



**101\_leopard\_aft\_deck3**



**101\_leopard\_aft\_deck4**





101\_leopard\_aft\_deck5



101\_leopard\_aft\_deck6



101\_leopard\_aft\_deck7



101\_leopard\_aft\_deck8



101\_leopard\_aft\_deck9



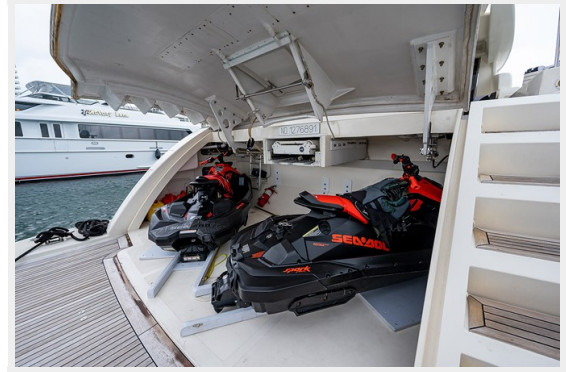
101\_leopard\_aft\_deck10



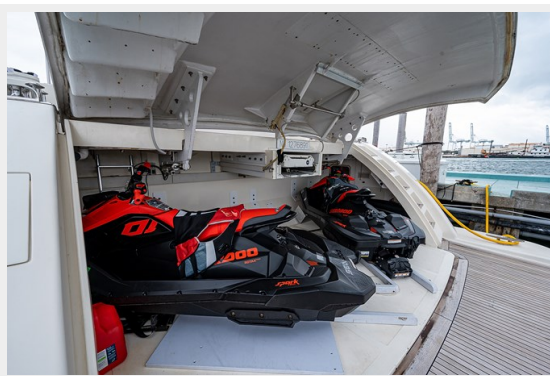
101\_leopard\_aft\_deck11



101\_leopard\_garage1



101\_leopard\_garage2



101\_leopard\_garage3



101\_leopard\_hallway2

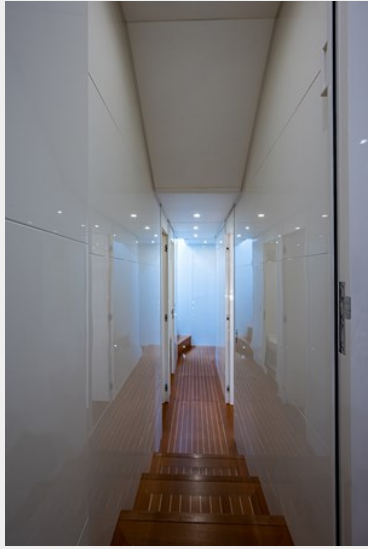


101\_leopard\_hallway3

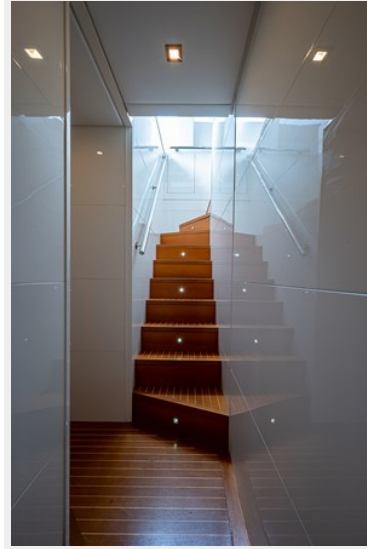




**101\_leopard\_hallway1**



**101\_leopard\_hallway4**



**101\_leopard\_master\_stateroom1**



**101\_leopard\_master\_head1**



101\_leopard\_master\_head2



101\_leopard\_master\_head3



101\_leopard\_master\_head4



101\_leopard\_master\_head5



101\_leopard\_master\_head6



101\_leopard\_master\_stateroom2



101\_leopard\_master\_stateroom4



101\_leopard\_master\_stateroom6



101\_leopard\_port\_guest\_head1



101\_leopard\_port\_guest\_head2



101\_leopard\_port\_guest\_head3



101\_leopard\_port\_guest\_head4



101\_leopard\_starboard\_guest\_head1



101\_leopard\_port\_guest\_stateroom4





**101\_leopard\_starboard\_guest\_head2**



**101\_leopard\_starboard\_guest\_head3**



**101\_leopard\_starboard\_guest\_head4**



**101\_leopard\_starboard\_guest\_head5**



101\_leopard\_starboard\_guest\_stateroom4

101\_leopard\_starboard\_guest\_stateroom3



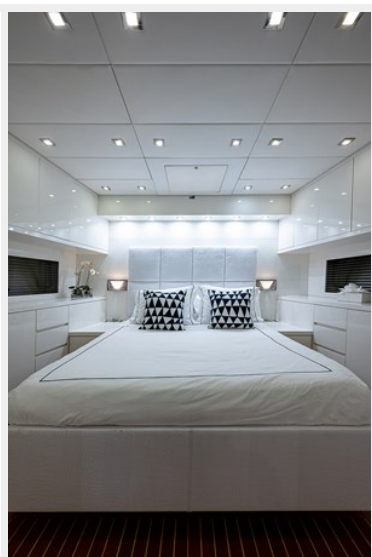
101\_leopard\_swim\_platform1



101\_leopard\_forward\_stateroom1



101\_leopard\_forward\_stateroom2



101\_leopard\_forward\_stateroom3



101\_leopard\_forward\_head1



101\_leopard\_forward\_stateroom4



101\_leopard\_forward\_head2



101\_leopard\_forward\_head3



101\_leopard\_forward\_head4



101\_leopard\_forward\_head5



101\_leopard\_forward\_stateroom5





# CONTACTS

---

Andrey Shestakov, leading yacht broker of the sales department of Shestakov Yacht Sales Inc. Shestakov Yacht Sales Inc., the official representative of the Miami/Fort Lauderdale FL headquarters.

## Contact details

---

Email: **andrey@shestakovyachtsales.com**

Web: [shestakovyachtsales.com/en/](http://shestakovyachtsales.com/en/)

## Telephones

---

USA: **+1(954)274-4435**

## Office hours

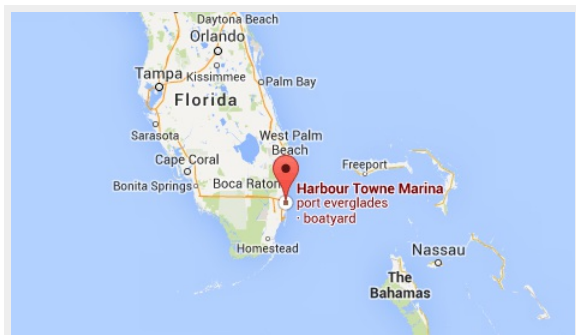
---

Monday – Saturday: **9:00 - 21:00 EDT**

Sunday: **closed**

## Address

---



Harbour Towne Marina, 850 NE 3rd St, STE 213, Dania, FL 33004