

AKULA — CANTIERE NAVALI DI PESARO



Builder: CANTIERE NAVALI DI PESARO

Year Built: 2006

Model: Motor Yacht

Price: PRICE ON APPLICATION

Location: Italy

LOA: 78' 8" (23.96mm)

Beam: 24.7

Max Draft: 7' 7" (2.3mm)

Cruise Speed: 10 Knots Kts. (12 MPH)

Max Speed: 11.5 Knots Kts. (13 MPH)

Our experienced yacht broker, Andrey Shestakov, will help you choose and buy a yacht that best suits your needs **AKULA — CANTIERE NAVALI DI PESARO** from **our catalogue**. Presently, at **Shestakov Yacht Sales Inc.**, we have a wide variety of yachts available on **our sale's list**. We also work in close contact with all the big **yacht manufacturers** from all over the world.

If you would like to buy a yacht **AKULA — CANTIERE NAVALI DI PESARO** or would like help answering any questions concerning purchasing, selling or chartering a yacht, please call **+1(954)274-4435**

TABLE OF CONTENTS

TABLE OF CONTENTS	2
SPECIFICATIONS	4
Overview	4
Basic Information	4
Dimensions	4
Speed, Capacities and Weight	4
Accommodations	5
Hull and Deck Information	5
Engine Information	5
PHOTOS	6
yacht-akula-24m-exterior-01	6
yacht-akula-24m-exterior-02	6
yacht-akula-24m-exterior-03	6
yacht-akula-24m-exterior-04	6
yacht-akula-24m-GA-01	6
yacht-akula-24m-GA-02	6
yacht-akula-24m-GA-03	7
yacht-akula-24m-interior-01	7
yacht-akula-24m-interior-02	7
yacht-akula-24m-interior-03	7
yacht-akula-24m-interior-04	7
yacht-akula-24m-interior-05	7
yacht-akula-24m-interior-06	7
yacht-akula-24m-interior-07	7
yacht-akula-24m-interior-08	8
yacht-akula-24m-interior-09	8
yacht-akula-24m-profile-01	8
yacht-akula-24m-profile-02	8

CONTACTS	9
Contact details	9
Telephones	9
Office hours	9
Address	9

SPECIFICATIONS

Overview

- Envisioned as a rule breaker
- A robust, go-anywhere explorer yacht
- A unique yacht with impressive technical capabilities, such as at anchor and underway stabilisers and a wide beam
- Unique seafaring spirit interior
- Impressive exterior deck areas for her size, ideal for relaxing and entertaining.
- Great fuel economy

Basic Information

Category: Motor Yacht

Sub Category: Expedition/Explorer

Model Year: 2006

Year Built: 2006

Country: Italy

Dimensions

LOA: 78' 8" (23.96mm)

Beam: 24.7

Max Draft: 7' 7" (2.3mm)

Speed, Capacities and Weight

Cruise Speed: 10 Knots Kts. (12 MPH) **Cruise Speed Range:** 6000

Max Speed: 11.5 Knots Kts. (13 MPH) **Gross Tonnage:** 120 Pounds

Water Capacity: 2500 Gallons

Fuel Capacity: 8717.68 Gal Gallons

Fuel Consumption: 14.53 Gal Gallons

Accommodations

Total Cabins: 4

Sleeps: 8

Crew Cabin: 4

Hull and Deck Information

Hull Material: Steel

Deck Material: Teak

Hull Configuration: Full Displacement

Exterior Designer: Sergio Cutolo

Interior Designer: Sergio Cutolo

Engine Information

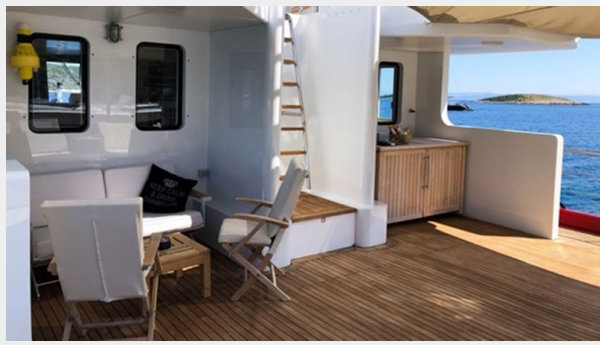
Engines: 2

Manufacturer: Baudouin

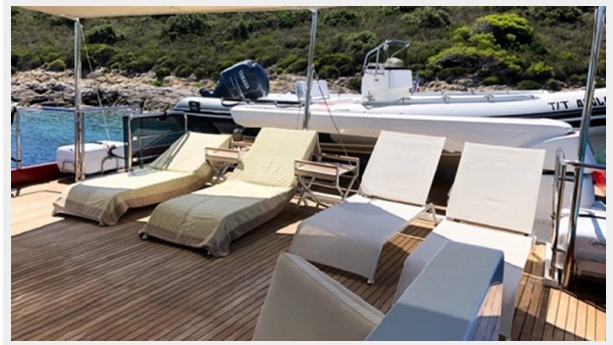
Fuel Type: Diesel

PHOTOS

yacht-akula-24m-exterior-01



yacht-akula-24m-exterior-02



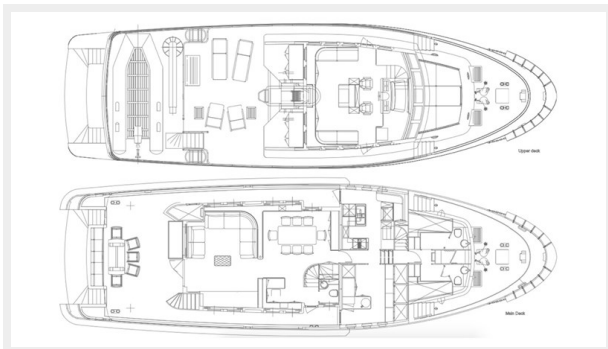
yacht-akula-24m-exterior-03



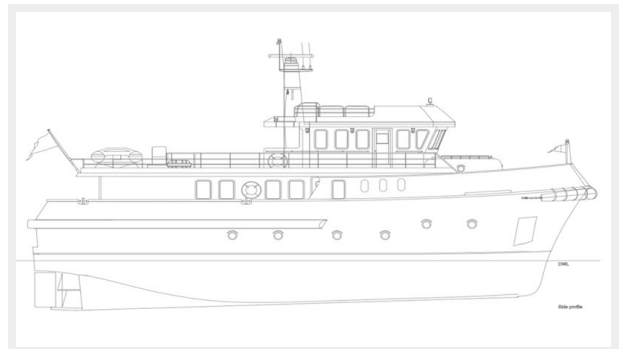
yacht-akula-24m-exterior-04



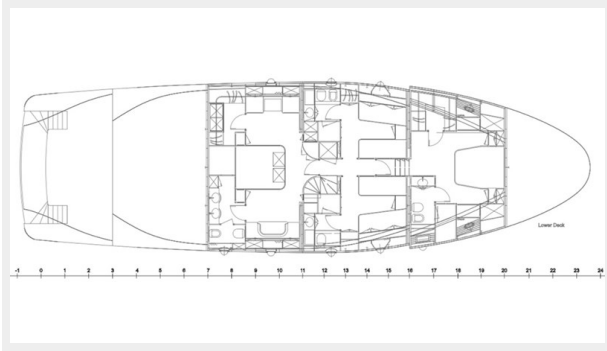
yacht-akula-24m-GA-01



yacht-akula-24m-GA-02



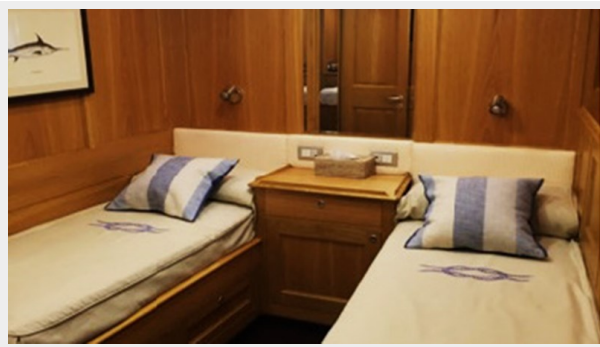
yacht-akula-24m-GA-03



yacht-akula-24m-interior-01



yacht-akula-24m-interior-02



yacht-akula-24m-interior-03



yacht-akula-24m-interior-04



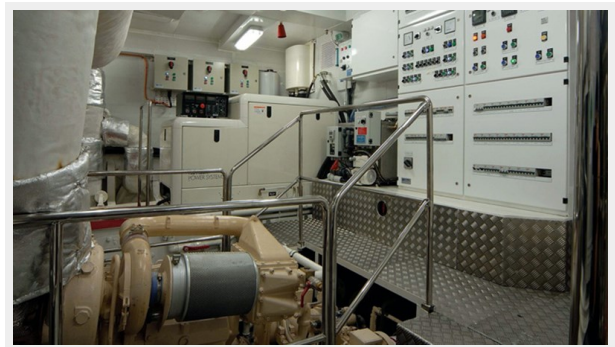
yacht-akula-24m-interior-05



yacht-akula-24m-interior-06



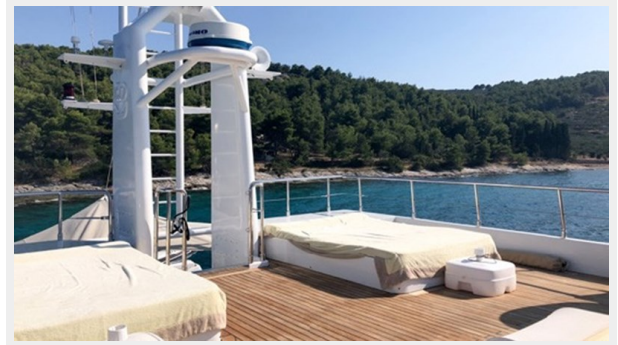
yacht-akula-24m-interior-07



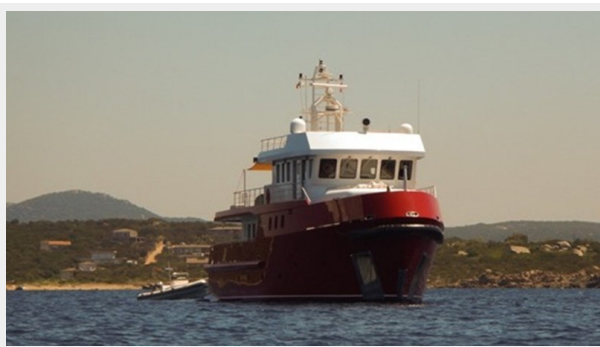
yacht-akula-24m-interior-08



yacht-akula-24m-interior-09



yacht-akula-24m-profile-01



yacht-akula-24m-profile-02



CONTACTS

Andrey Shestakov, leading yacht broker of the sales department of Shestakov Yacht Sales Inc. Shestakov Yacht Sales Inc., the official representative of the Miami/Fort Lauderdale FL headquarters.

Contact details

Email: **andrey@shestakovyachtsales.com**

Web: shestakovyachtsales.com/en/

Telephones

USA: **+1(954)274-4435**

Office hours

Monday – Saturday: **9:00 - 21:00** EDT

Sunday: **closed**

Address



Harbour Towne Marina, 850 NE 3rd St, STE 213, Dania, FL 33004