

## NO TIME TO DIE — SANLORENZO



**Builder:** SANLORENZO

**Year Built:** 2020

**Model:** Motor Yacht

**Price:** PRICE ON APPLICATION

**Location:** United States

**LOA:** 87' 5" (26.64mm)

**Beam:** 23.41

**Min Draft:** 5' 11" (1.8mm)

**Cruise Speed:** 20 Knots Kts. (23 MPH)

**Max Speed:** 23 Knots Kts. (26 MPH)

Our experienced yacht broker, Andrey Shestakov, will help you choose and buy a yacht that best suits your needs **No Time to Die — SANLORENZO** from our catalogue. Presently, at Shestakov Yacht Sales Inc., we have a wide variety of yachts available on our sale's list. We also work in close contact with all the big yacht manufacturers from all over the world.

If you would like to buy a yacht **No Time to Die — SANLORENZO** or would like help answering any questions concerning purchasing, selling or chartering a yacht, please call **+1(954)274-4435**

# TABLE OF CONTENTS

TABLE OF CONTENTS	2
SPECIFICATIONS	5
Overview	5
Basic Information	5
Dimensions	6
Speed, Capacities and Weight	6
Accommodations	6
Hull and Deck Information	6
Engine Information	6
PHOTOS	7
SX88 Sanlorenzo	7
SX88 Sanlorenzo	7
Exterior	7
Exterior	7
Flybridge and Aft Deck	7
Flybridge Lounge	7
Aft Deck	8
Beach Club	8
Aft Deck Seating	8
Beach Club	8
Seating	8
Flybridge	8
Flybridge	9
Flybridge Bar	9
Flybridge Dining	9
Flybridge Dining	9
Aft Deck Dining	9
Salon	9

---

Salon	10
Salon	10
Salon	10
Salon	10
Salon	10
Galley	10
Galley	11
Salon	11
Hallway to Staterooms	11
Primary Stateroom	11
Primary Stateroom	11
Primary Stateroom	11
Primary Stateroom	12
Primary Stateroom	12
Primary Head	12
Primary Head	12
Primary Head	12
Primary Head	12
Guest Stateroom	13
Guest Stateroom	13
Guest Stateroom	13
Guest Stateroom	13
Guest Head	13
Guest Head	13
Guest Stateroom	14
Guest Stateroom	14
Guest Stateroom	14
Guest Head	14
Guest Head	14

---

---

CONTACTS	15
Contact details	15
Telephones	15
Office hours	15
Address	15

---

# SPECIFICATIONS

---

## Overview

---

### 2020 Sanlorenzo SX88

New to Market and the only SX88 available for immediate delivery.

Intent to push the boundaries of traditional yacht design, Sanlorenzo literally brought on board modern design principles of home living with the SX line, whose principal design aesthetic is that of a megayacht that feels like an open loft. A central component to the SX88's design was a continuous flow from stern to bow, replete with an open kitchen adjacent to the formal dining area, a main living area with wide glass walls overlooking the sea and a seamless transition from interior to exterior.

Aft of the main-deck living area, and down five easily negotiated steps, the open cockpit/beach club area accommodates a multitude of toys, including a tender, jet ski and sea bobs. The crane to move these watercrafts is elegantly disguised in the prolonged profile of the handrail, with no visual disturbance to the SX88's eye-catching profile. Once the watercrafts have been effortlessly deployed, the wide stern area offers a best-in-class 323-square-feet of beach club space, shaded by umbrellas and furnished to enjoy life to the finest—at the water's edge.

A testament to the SX88's megayacht DNA, the only steering position is on the upper deck, with a reverse angled windshield and 9-foot-long side windows that can be lowered completely, making you one with your surroundings in a superb lounge area. A dedicated lounging area aft is left open to the elements yielding stunning views and alfresco dining.

---

## Basic Information

---

**Category:** Motor Yacht

**Sub Category:** Motor Yacht

**Model Year:** 2020

**Year Built:** 2020

**Country:** United States

---

## Dimensions

---

**LOA:** 87' 5" (26.64mm)

**Beam:** 23.41

**Min Draft:** 5' 11" (1.8mm)

---

## Speed, Capacities and Weight

---

**Cruise Speed:** 20 Knots Kts. (23 MPH)

**Max Speed:** 23 Knots Kts. (26 MPH)

**Water Capacity:** 528 Gallons

**Holding Tank:** 145 Gal Gallons

**Fuel Capacity:** 2456 Gal Gallons

---

## Accommodations

---

**Total Cabins:** 4

**Total Heads:** 5

---

## Hull and Deck Information

---

**Hull Material:** Fiberglass

---

## Engine Information

---

**Engines:** 3

**Manufacturer:** Volvo

**Engine Type:** Inboard

**Fuel Type:** Diesel

# PHOTOS

**SX88 Sanlorenzo**



**SX88 Sanlorenzo**



**Exterior**



**Exterior**



**Flybridge and Aft Deck**



**Flybridge Lounge**



**Aft Deck**



**Beach Club**



**Aft Deck Seating**



**Beach Club**



**Seating**



**Flybridge**





**Flybridge**



**Flybridge Bar**



**Flybridge Dining**



**Flybridge Dining**



**Aft Deck Dining**



**Salon**



Salon



Salon



Salon



Salon



Salon



Galley



**Galley**



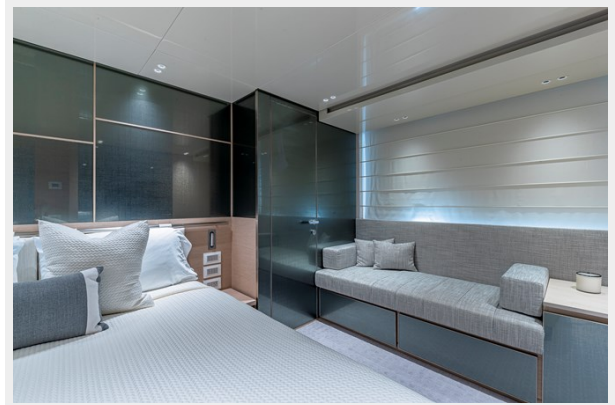
**Salon**



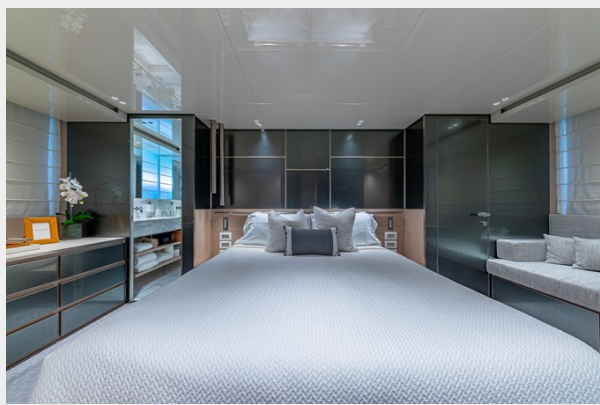
**Hallway to Staterooms**



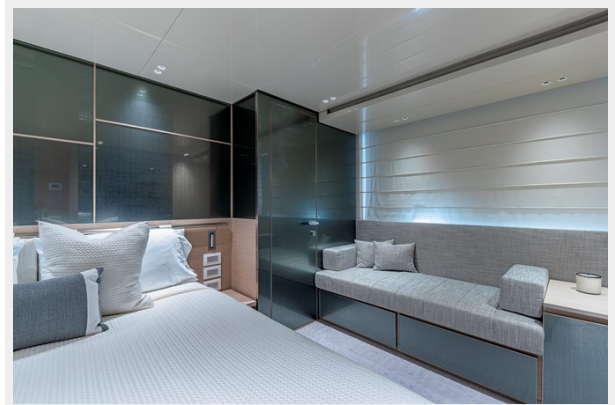
**Primary Stateroom**



**Primary Stateroom**



**Primary Stateroom**



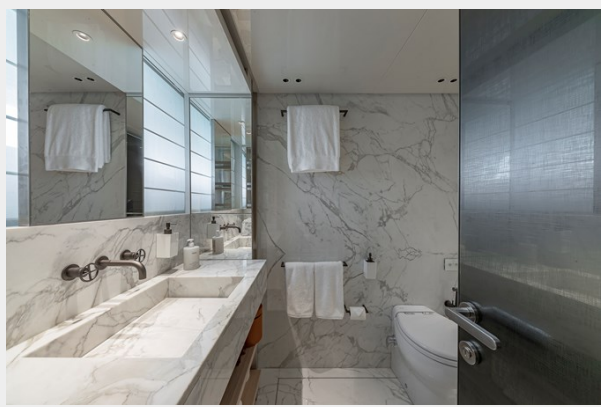
**Primary Stateroom**



**Primary Stateroom**



**Primary Head**



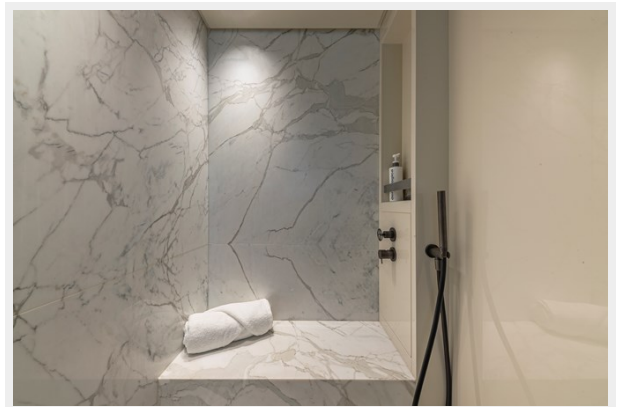
**Primary Head**



**Primary Head**



**Primary Head**



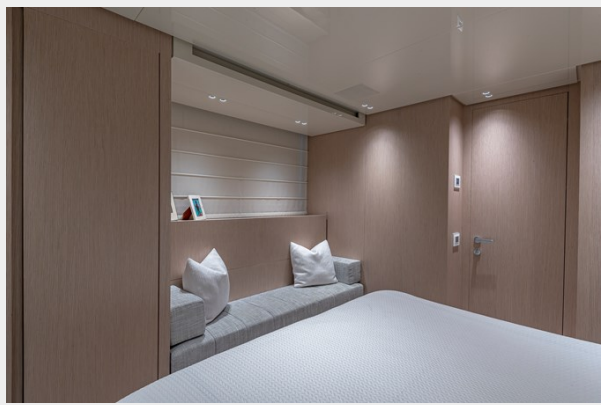
**Guest Stateroom**



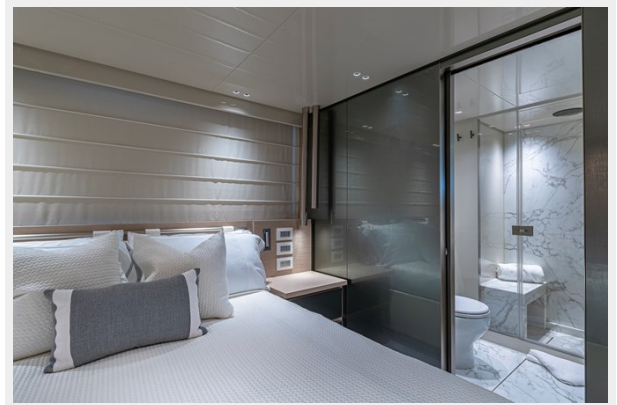
**Guest Stateroom**



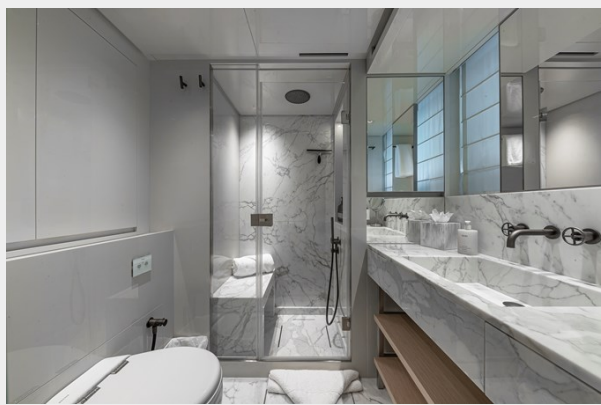
**Guest Stateroom**



**Guest Stateroom**



**Guest Head**



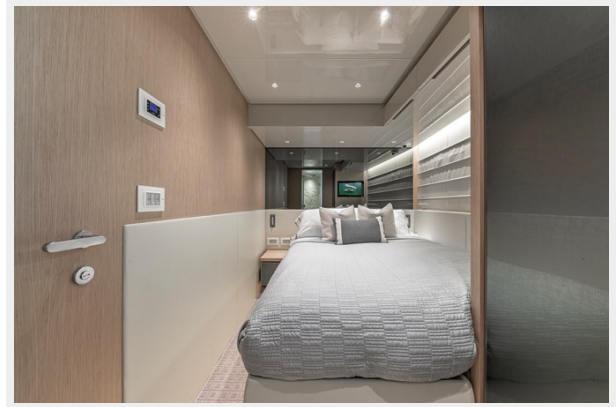
**Guest Head**



**Guest Stateroom**



**Guest Stateroom**



**Guest Stateroom**



**Guest Head**



**Guest Head**



---

# CONTACTS

---

Andrey Shestakov, leading yacht broker of the sales department of Shestakov Yacht Sales Inc. Shestakov Yacht Sales Inc., the official representative of the Miami/Fort Lauderdale FL headquarters.

---

## Contact details

---

Email: [andrey@shestakovyachtsales.com](mailto:andrey@shestakovyachtsales.com)

Web: [shestakovyachtsales.com/en/](http://shestakovyachtsales.com/en/)

---

## Telephones

---

USA: +1(954)274-4435

---

## Office hours

---

Monday – Saturday: **9:00 - 21:00** EDT

Sunday: **closed**

---

## Address

---



Harbour Towne Marina, 850 NE 3rd St,  
STE 213, Dania, FL 33004