

KISMET — HARGRAVE



Builder: HARGRAVE

Year Built: 2003

Model: Motor Yacht

Price: PRICE ON APPLICATION

Location: United States

LOA: 78' 6" (23.93mm)

Beam: 20

Max Draft: 5' 8" (1.73mm)

Cruise Speed: 17 Knots Kts. (20 MPH)

Max Speed: 21 Knots Kts. (24 MPH)

Our experienced yacht broker, Andrey Shestakov, will help you choose and buy a yacht that best suits your needs **Kismet — HARGRAVE** from our catalogue. Presently, at Shestakov Yacht Sales Inc., we have a wide variety of yachts available on our sale's list. We also work in close contact with all the big yacht manufacturers from all over the world.

If you would like to buy a yacht **Kismet — HARGRAVE** or would like help answering any questions concerning purchasing, selling or chartering a yacht, please call **+1(954)274-4435**

TABLE OF CONTENTS

TABLE OF CONTENTS	2
SPECIFICATIONS	3
Overview	3
Basic Information	3
Dimensions	3
Speed, Capacities and Weight	3
Accommodations	4
Hull and Deck Information	4
Engine Information	4
PHOTOS	5
CONTACTS	11
Contact details	11
Telephones	11
Office hours	11
Address	11

SPECIFICATIONS

Overview

Haul out Bottom Job & Insurance Survey (August 2020)

With a wonderful balance of indoor and outdoor space, five staterooms, an abundant equipment list, day heads on main deck and sky lounge levels, dependable CAT power, twin 32 kw gensets, bow and stern thrusters, waste treatment and top flight maintenance, KISMET is a must see!

Accommodations: 5 Staterooms / Sleeps 10 (includes forward crew bunk beds)

Basic Information

Category: Motor Yacht

Sub Category: Semi-Displacement

Model Year: 2003

Year Built: 2003

Country: United States

Dimensions

LOA: 78' 6" (23.93mm)

LWL: 68' 6" (20.88mm)

Beam: 20

Max Draft: 5' 8" (1.73mm)

Speed, Capacities and Weight

Cruise Speed: 17 Knots Kts. (20 MPH)

Max Speed: 21 Knots Kts. (24 MPH)

Water Capacity: 435 Gallons

Holding Tank: 100 Gal Gallons

Fuel Capacity: 2700 Gal Gallons

Accommodations

Total Cabins: 5

Total Berths: 7

Sleeps: 10

Total Heads: 7

Crew Cabin: 1

Crew Berths: 1

Crew Heads: 1

Hull and Deck Information

Hull Material: Fiberglass

Deck Material: Fiberglass

Hull Configuration: Semi-Displacement

Hull Color: White

Hull Designer: Hargrave Yacht Design

Exterior Designer: Hargrave Yacht Design

Interior Designer: Yacht Interiors by Shelley

Engine Information

Engines: 2

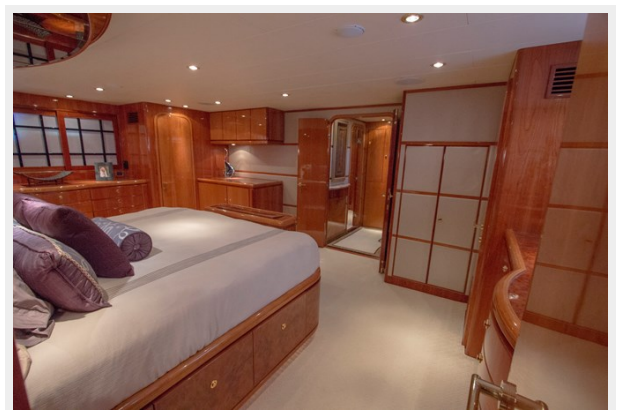
Manufacturer: Caterpillar

Engine Type: Inboard

Fuel Type: Diesel

PHOTOS

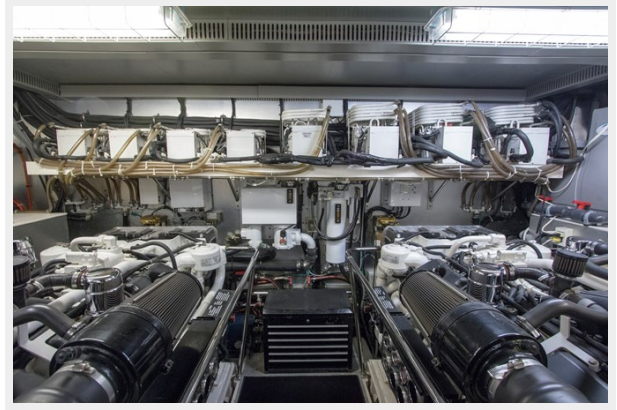












CONTACTS

Andrey Shestakov, leading yacht broker of the sales department of Shestakov Yacht Sales Inc. Shestakov Yacht Sales Inc., the official representative of the Miami/Fort Lauderdale FL headquarters.

Contact details

Email: andrey@shestakovyachtsales.com

Web: shestakovyachtsales.com/en/

Telephones

USA: +1(954)274-4435

Office hours

Monday – Saturday: **9:00 - 21:00** EDT

Sunday: **closed**

Address



Harbour Towne Marina, 850 NE 3rd St,
STE 213, Dania, FL 33004