

UNLEASHED — VIKING



Builder: VIKING

Year Built: 1998

Model: Sport Fisherman

Price: PRICE ON APPLICATION

Location: United States

LOA: 55' (16.76mm)

Beam: 17.33

Max Draft: 5' (1.52mm)

Cruise Speed: 28 Knots Kts. (32 MPH)

Max Speed: 38 Knots Kts. (44 MPH)

Our experienced yacht broker, Andrey Shestakov, will help you choose and buy a yacht that best suits your needs **UNLEASHED — VIKING** from our catalogue. Presently, at Shestakov Yacht Sales Inc., we have a wide variety of yachts available on our sale's list. We also work in close contact with all the big yacht manufacturers from all over the world.

If you would like to buy a yacht **UNLEASHED — VIKING** or would like help answering any questions concerning purchasing, selling or chartering a yacht, please call **+1(954)274-4435**

TABLE OF CONTENTS

TABLE OF CONTENTS	2
SPECIFICATIONS	5
Overview	5
Basic Information	5
Dimensions	5
Speed, Capacities and Weight	5
Accommodations	5
Hull and Deck Information	5
Engine Information	6
PHOTOS	7
8068522_20211014034944096_1_XLARGE	7
8068522_20211014034947113_1_XLARGE	7
8068522_20211014034950432_1_XLARGE	7
8068522_20211014034954524_1_XLARGE	7
8068522_20211014035001070_1_XLARGE	8
8068522_20211014035004778_1_XLARGE	8
8068522_20211014035007937_1_XLARGE	8
8068522_20211014035010987_1_XLARGE	8
6933626_0_101220181842_7	8
8068522_20211014035013524_1_XLARGE	8
8068522_20211014034841056_1_XLARGE	9
8068522_20211014034852846_1_XLARGE	9
8068522_20211014034847113_1_XLARGE	9
8068522_20211014034843591_1_XLARGE	9
8068522_20211014034855571_1_XLARGE	10
8068522_20211014034707237_1_XLARGE	10
8068522_20211014034919544_1_XLARGE	10
8068522_20211014034910889_1_XLARGE	10

6933626_0_101220181842_12	11
6933626_0_101220181842_13	11
8068522_20211014034913926_1_XLARGE	11
8068522_20211014034916870_1_XLARGE	11
8068522_20211014034907534_1_XLARGE	12
8068522_20211014034901773_1_XLARGE	12
8068522_20211014034936610_1_XLARGE	12
8068522_20211014034928590_1_XLARGE	12
6933626_0_101220181842_16	13
8068522_20211014034940468_1_XLARGE	13
8068522_20211014034922527_1_XLARGE	13
8068522_20211014034905025_1_XLARGE	13
8068522_20211014034925506_1_XLARGE	14
8068522_20211014034834347_1_XLARGE	14
8068522_20211014034831951_1_XLARGE	14
8068522_20211014034837815_1_XLARGE	14
8068522_20211014034654653_1_XLARGE	15
8068522_20211014034828897_1_XLARGE	15
6933626_0_101220181842_5	15
8068522_20211014034651264_1_XLARGE	15
8068522_20211014034645012_1_XLARGE	16
8068522_20211014034639034_1_XLARGE	16
8068522_20211014034641984_1_XLARGE	16
8068522_20211014034648396_1_XLARGE	16
8068522_20211014034636579_1_XLARGE	16
8068522_20211014034755234_1_XLARGE	16
8068522_20211014034758119_1_XLARGE	17
8068522_20211014034801285_1_XLARGE	17
8068522_20211014034804301_1_XLARGE	17

8068522_20211014034807506_1_XLARGE	17
8068522_20211014034817095_1_XLARGE	17
8068522_20211014034820507_1_XLARGE	17
8068522_20211014034826064_1_XLARGE	18
8068522_20211014034823608_1_XLARGE	18
8068522_20211014034711034_1_XLARGE	18
8068522_20211014034714282_1_XLARGE	18
8068522_20211014034717742_1_XLARGE	18
8068522_20211014034720280_1_XLARGE	18
8068522_20211014034729266_1_XLARGE	19
8068522_20211014034750593_1_XLARGE	19
8068522_20211014034726380_1_XLARGE	19
8068522_20211014034733190_1_XLARGE	19
8068522_20211014034616719_1_XLARGE	20
8068522_20211014034620700_1_XLARGE	20
8068522_20211014034623577_1_XLARGE	20
8068522_20211014034628020_1_XLARGE	20
8068522_20211014034632349_1_XLARGE	20
CONTACTS	21
Contact details	21
Telephones	21
Office hours	21
Address	21

SPECIFICATIONS

Overview

N/A

Basic Information

Category: Sport Fisherman

Model Year: 1998

Year Built: 1998

Country: United States

Dimensions

LOA: 55' (16.76mm)

Beam: 17.33

Max Draft: 5' (1.52mm)

Speed, Capacities and Weight

Cruise Speed: 28 Knots Kts. (32 MPH)

Max Speed: 38 Knots Kts. (44 MPH)

Water Capacity: 250 Gallons

Holding Tank: 100 Gal Gallons

Fuel Capacity: 2500 Gal Gallons

Accommodations

Total Cabins: 3

Total Heads: 2

Hull and Deck Information

Hull Material: Fiberglass

Engine Information

Engines: 2

Manufacturer: MAN

Engine Type: Inboard

Fuel Type: Diesel/Electric

PHOTOS

8068522_20211014034944096_1_XLARGE



8068522_20211014034947113_1_XLARGE



8068522_20211014034950432_1_XLARGE



8068522_20211014034954524_1_XLARGE



8068522_20211014035001070_1_XLARGE



8068522_20211014035004778_1_XLARGE



8068522_20211014035007937_1_XLARGE



8068522_20211014035010987_1_XLARGE



6933626_0_101220181842_7



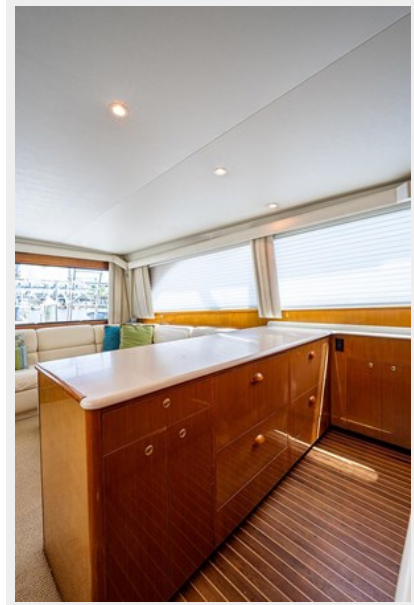
8068522_20211014035013524_1_XLARGE



8068522_20211014034841056_1_XLARGE



8068522_20211014034852846_1_XLARGE



8068522_20211014034847113_1_XLARGE



8068522_20211014034843591_1_XLARGE



8068522_2021101403485571_1_XLARGE



8068522_20211014034707237_1_XLARGE



8068522_20211014034919544_1_XLARGE



8068522_20211014034910889_1_XLARGE



6933626_0_101220181842_12



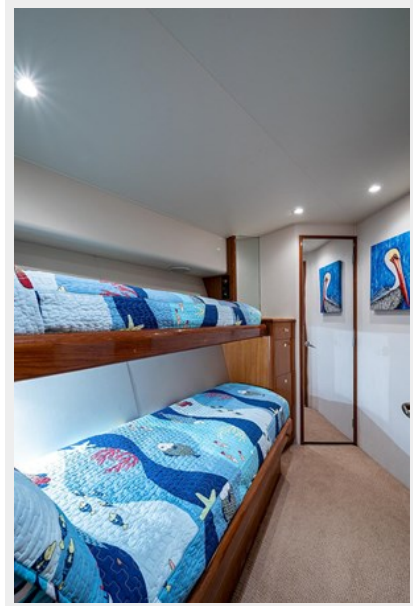
6933626_0_101220181842_13



8068522_20211014034913926_1_XLARGE



8068522_20211014034916870_1_XLARGE



8068522_20211014034907534_1_XLARGE

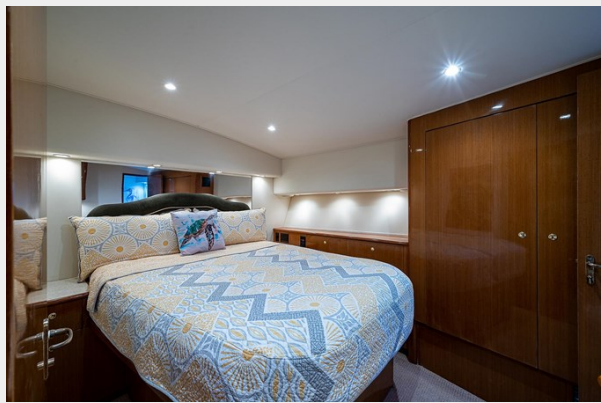


8068522_20211014034901773_1_XLARGE



8068522_20211014034936610_1_XLARGE

8068522_20211014034928590_1_XLARGE



6933626_0_101220181842_16



8068522_20211014034940468_1_XLARGE



8068522_20211014034922527_1_XLARGE



8068522_20211014034905025_1_XLARGE



8068522_20211014034925506_1_XLARGE



8068522_20211014034834347_1_XLARGE



8068522_20211014034831951_1_XLARGE



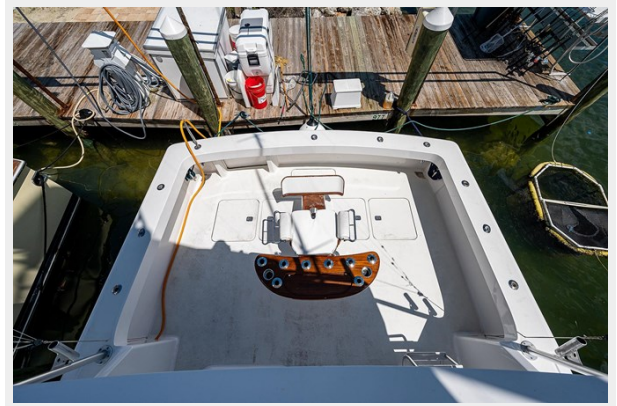
8068522_20211014034837815_1_XLARGE



8068522_20211014034654653_1_XLARGE



8068522_20211014034828897_1_XLARGE



6933626_0_101220181842_5

8068522_20211014034651264_1_XLARGE



8068522_20211014034645012_1_XLARGE



8068522_20211014034639034_1_XLARGE



8068522_20211014034641984_1_XLARGE



8068522_20211014034648396_1_XLARGE



8068522_20211014034636579_1_XLARGE



8068522_20211014034755234_1_XLARGE



8068522_20211014034758119_1_XLARGE



8068522_20211014034801285_1_XLARGE



8068522_20211014034804301_1_XLARGE



8068522_20211014034807506_1_XLARGE



8068522_20211014034817095_1_XLARGE



8068522_20211014034820507_1_XLARGE



8068522_20211014034826064_1_XLARGE



8068522_20211014034823608_1_XLARGE



8068522_20211014034711034_1_XLARGE



8068522_20211014034714282_1_XLARGE



8068522_20211014034717742_1_XLARGE



8068522_20211014034720280_1_XLARGE



8068522_20211014034729266_1_XLARGE



8068522_20211014034750593_1_XLARGE



8068522_20211014034726380_1_XLARGE



8068522_20211014034733190_1_XLARGE



8068522_20211014034616719_1_XLARGE



8068522_20211014034620700_1_XLARGE



8068522_20211014034623577_1_XLARGE



8068522_20211014034628020_1_XLARGE



8068522_20211014034632349_1_XLARGE



CONTACTS

Andrey Shestakov, leading yacht broker of the sales department of Shestakov Yacht Sales Inc. Shestakov Yacht Sales Inc., the official representative of the Miami/Fort Lauderdale FL headquarters.

Contact details

Email: andrey@shestakovyachtsales.com

Web: shestakovyachtsales.com/en/

Telephones

USA: +1(954)274-4435

Office hours

Monday – Saturday: **9:00 - 21:00** EDT

Sunday: **closed**

Address



Harbour Towne Marina, 850 NE 3rd St,
STE 213, Dania, FL 33004