

MOON SHELL — CATALINA



Builder: CATALINA

Year Built: 1990

Model: Sloop

Price: PRICE ON APPLICATION

Location: United States

LOA: 42' (12.8mm)

Beam: 13.83

Max Draft: 6' (1.83mm)

Cruise Speed: 7 Knots Kts. (8 MPH)

Max Speed: 9 Knots Kts. (10 MPH)

Our experienced yacht broker, Andrey Shestakov, will help you choose and buy a yacht that best suits your needs **Moon Shell — CATALINA** from our catalogue. Presently, at Shestakov Yacht Sales Inc., we have a wide variety of yachts available on our sale's list. We also work in close contact with all the big yacht manufacturers from all over the world.

If you would like to buy a yacht **Moon Shell — CATALINA** or would like help answering any questions concerning purchasing, selling or chartering a yacht, please call **+1(954)274-4435**

TABLE OF CONTENTS

TABLE OF CONTENTS	2
SPECIFICATIONS	4
Overview	4
Basic Information	4
Dimensions	4
Speed, Capacities and Weight	4
Accommodations	4
Hull and Deck Information	5
Engine Information	5
PHOTOS	6
1006 Moon Shell Bow	6
1005 Moon Shell Starboard	6
1007 Moonshell Stern	6
1008 Moon Shell Port	6
1012 Moonshell 1990 Catalina 42	7
1013 Moon Shell Foredeck	7
1014 Moon Shell Furler	7
1015 Moon Shell Anchor	7
1016 Moon Shell Anchor Locker	8
1017 Moon Shell Tender	8
1018 Moon Shell Main sail Cradle	8
1019 Moon Shell Cabin-Top	8
1021 Moon Shell Cabin-top Winch	9
1020 Moon Shell Dodger	9
1021 Moon Shell Primary Winch	9
1022 Moon Shell Electronics	9
1023 Moon Shell Binnacle	10
1024 Moon Shell Salon Port	10

1026 Moon Shell Aft Head	10
1025 Moon Shell Galley	10
1027 Moon Shell Starboard Guest Cabin	11
1028 Moon Shell Port Guest Cabin	11
1030 Moon Shell Master Cabin Fwd	11
1029 Moon Shell Salon	11
1031 Moon Shell Master Berth	12
1032 Moon Shell Master Cabin	12
1033 Master Head	12
1034 Moon Shell Engine compartment	12
1035 Moon Shell Engine	13
1040 catalina_42_drawing	13
CONTACTS	14
Contact details	14
Telephones	14
Office hours	14
Address	14

SPECIFICATIONS

Overview

The 1990 Catalina 42 performance sloop "Moon Shell" is available in New Bern North Carolina. She features a 3 stateroom 2 head layout with a spacious salon and galley. Moon Shell has a large comfortable cockpit with "sugar scoop" for easy boarding from dock or tender. A well designed sail-plan and deck layout make Moon Shell easy to handle, The Nelson Marek designed hull is fast and nimble. She is well suited for club racing or cruising. She features sea water cooled refrigerator, pressure hot/cold fresh water, auto-pilot, VHF radio and depth sounder. The current owner has added an inflatable tender with outboard motor. Please see full specs for more details.

Basic Information

Category: Sloop

Model Year: 1990

Year Built: 1990

Country: United States

Dimensions

LOA: 42' (12.8mm)

Beam: 13.83

Max Draft: 6' (1.83mm)

Speed, Capacities and Weight

Cruise Speed: 7 Knots Kts. (8 MPH)

Max Speed: 9 Knots Kts. (10 MPH)

Fuel Capacity: 39 Gal Gallons

Accommodations

Total Cabins: 3

Total Berths: 3

Total Heads: 2

Hull and Deck Information

Hull Material: Fiberglass

Engine Information

Engines: 1

Manufacturer: Yanmar

Engine Type: Inboard

Fuel Type: Diesel

PHOTOS

1005 Moon Shell Starboard



1006 Moon Shell Bow



1007 Moonshell Stern



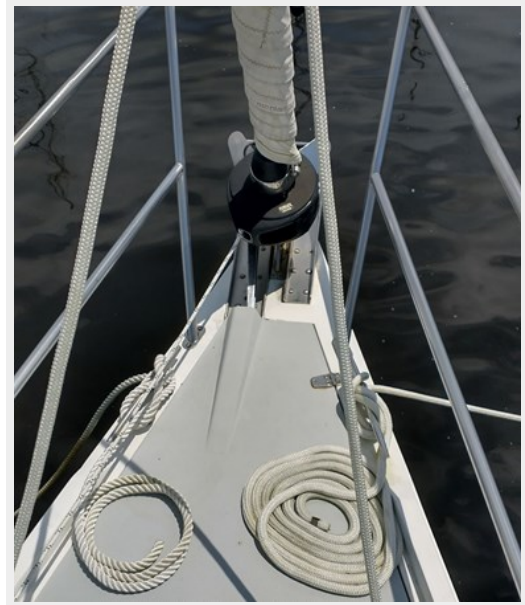
1008 Moon Shell Port



1012 Moonshell 1990 Catalina 42



1013 Moon Shell Foredeck



1014 Moon Shell Furler



1015 Moon Shell Anchor



1016 Moon Shell Anchor Locker



1017 Moon Shell Tender



1018 Moon Shell Main sail Cradle



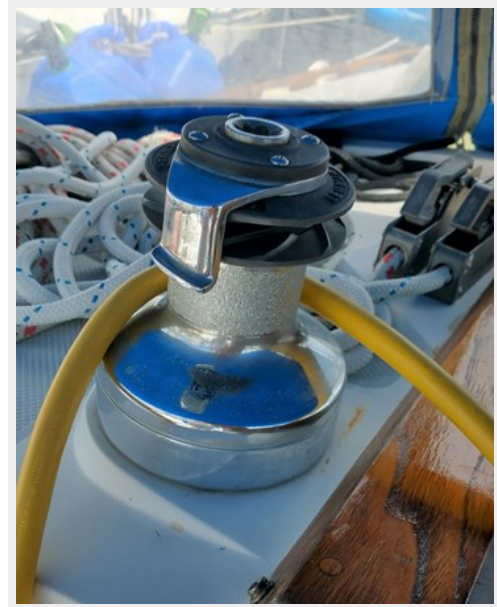
1019 Moon Shell Cabin-Top



1020 Moon Shell Dodger



1021 Moon Shell Cabin-top Winch



1021 Moon Shell Primary Winch



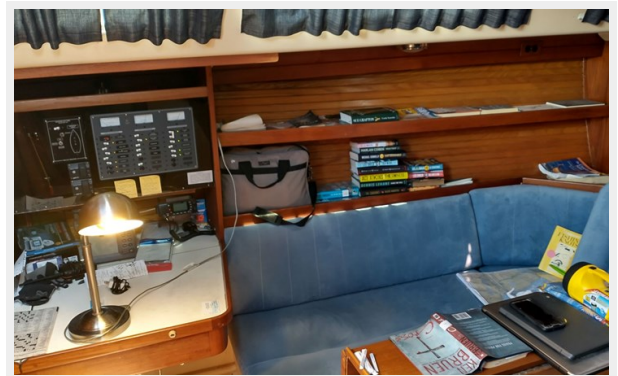
1022 Moon Shell Electronics



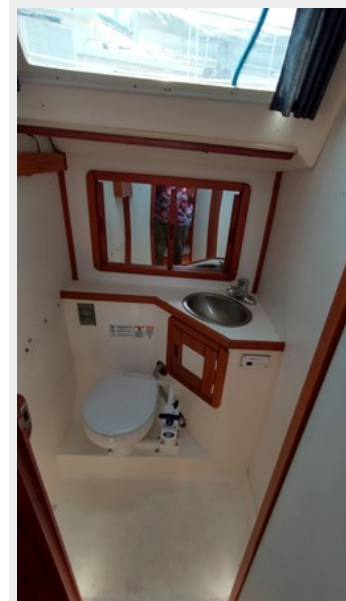
1023 Moon Shell Binnacle



1024 Moon Shell Salon Port



1026 Moon Shell Aft Head



1025 Moon Shell Galley



1027 Moon Shell Starboard Guest Cabin



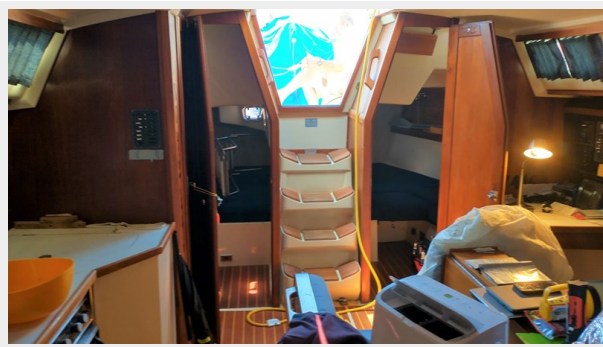
1028 Moon Shell Port Guest Cabin



1030 Moon Shell Master Cabin Fwd



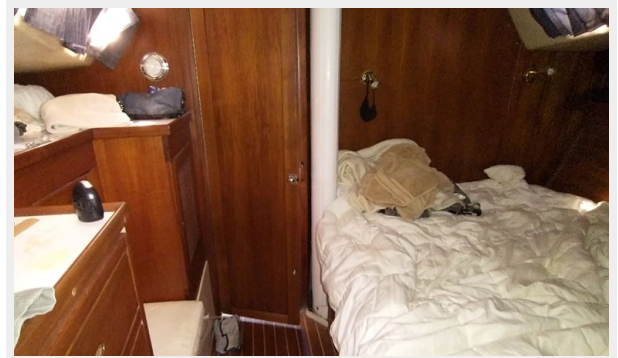
1029 Moon Shell Salon



1031 Moon Shell Master Berth



1032 Moon Shell Master Cabin



1033 Master Head



1034 Moon Shell Engine compartment



1035 Moon Shell Engine



1040 catalina_42_drawing



CONTACTS

Andrey Shestakov, leading yacht broker of the sales department of Shestakov Yacht Sales Inc. Shestakov Yacht Sales Inc., the official representative of the Miami/Fort Lauderdale FL headquarters.

Contact details

Email: andrey@shestakovyachtsales.com

Web: shestakovyachtsales.com/en/

Telephones

USA: +1(954)274-4435

Office hours

Monday – Saturday: **9:00 - 21:00** EDT

Sunday: **closed**

Address



Harbour Towne Marina, 850 NE 3rd St,
STE 213, Dania, FL 33004