

ENCLOSED BRIDGE — VIKING



Builder: VIKING

Year Built: 2002

Model: Sport Fisherman

Price: PRICE ON APPLICATION

Location: United States

LOA: 65' (19.81mm)

Beam: 19.33

Max Draft: 6' (1.83mm)

Cruise Speed: 28 Knots Kts. (32 MPH)

Max Speed: 36 Knots Kts. (41 MPH)

Our experienced yacht broker, Andrey Shestakov, will help you choose and buy a yacht that best suits your needs **Enclosed Bridge — VIKING** from our catalogue. Presently, at Shestakov Yacht Sales Inc., we have a wide variety of yachts available on our sale's list. We also work in close contact with all the big yacht manufacturers from all over the world.

If you would like to buy a yacht **Enclosed Bridge — VIKING** or would like help answering any questions concerning purchasing, selling or chartering a yacht, please call **+1(954)274-4435**

TABLE OF CONTENTS

TABLE OF CONTENTS	2
SPECIFICATIONS	5
Overview	5
Basic Information	5
Dimensions	5
Speed, Capacities and Weight	5
Accommodations	5
Hull and Deck Information	5
Engine Information	6
PHOTOS	7
8071761_20211016090656603_1_XLARGE	7
8071761_20211016091339942_1_XLARGE	7
8071761_20211016091343506_1_XLARGE	7
8071761_20211016091400162_1_XLARGE	7
8071761_20211016090904133_1_XLARGE	7
8071761_20211016091352970_1_XLARGE	7
8071761_20211016091109908_1_XLARGE	8
8071761_20211016090900564_1_XLARGE	8
8071761_20211016091132496_1_XLARGE	8
8071761_20211016091123072_1_XLARGE	8
8071761_20211016091118454_1_XLARGE	9
8071761_20211016091156738_1_XLARGE	9
8071761_20211016091136555_1_XLARGE	9
8071761_20211016091141543_1_XLARGE	9
8071761_20211016091148997_1_XLARGE	10
8071761_20211016091153278_1_XLARGE	10
8071761_20211016091145448_1_XLARGE	10
8071761_20211016091046266_1_XLARGE	10

8071761_20211016091051182_1_XLARGE	11
8071761_20211016091054737_1_XLARGE	11
8071761_20211016091038914_1_XLARGE	11
8071761_20211016091211678_1_XLARGE	11
8071761_20211016091208693_1_XLARGE	12
8071761_20211016091220477_1_XLARGE	12
8071761_20211016091205044_1_XLARGE	12
8071761_20211016090850468_1_XLARGE	12
8071761_20211016090853741_1_XLARGE	13
8071761_20211016090846256_1_XLARGE	13
8071761_20211016090857023_1_XLARGE	13
8071761_20211016090946507_1_XLARGE	13
8071761_20211016090953354_1_XLARGE	14
8071761_20211016090926309_1_XLARGE	14
8071761_20211016090922287_1_XLARGE	14
8071761_20211016090916057_1_XLARGE	14
8071761_20211016090912762_1_XLARGE	15
8071761_20211016090910525_1_XLARGE	15
8071761_20211016090907551_1_XLARGE	15
8071761_20211016090825852_1_XLARGE	15
8071761_20211016090839979_1_XLARGE	16
8071761_20211016090816867_1_XLARGE	16
8071761_20211016090843155_1_XLARGE	16
8071761_20211016090800634_1_XLARGE	16
8071761_20211016090738973_1_XLARGE	16
8071761_20211016090750722_1_XLARGE	16
8071761_20211016090744890_1_XLARGE	17
8071761_20211016090741616_1_XLARGE	17
8071761_20211016090957836_1_XLARGE	17

8071761_20211016091001496_1_XLARGE	17
8071761_20211016091007369_1_XLARGE	17
8071761_20211016091005225_1_XLARGE	17
8071761_20211016091010978_1_XLARGE	18
8071761_20211016091017041_1_XLARGE	18
8071761_20211016091224385_1_XLARGE	18
8071761_20211016091228428_1_XLARGE	18
8071761_20211016091231968_1_XLARGE	19
8071761_20211016091235045_1_XLARGE	19
8071761_20211016091239129_1_XLARGE	19
8071761_20211016091306209_1_XLARGE	19
8071761_20211016091312387_1_XLARGE	20
8071761_20211016091320657_1_XLARGE	20
CONTACTS	21
Contact details	21
Telephones	21
Office hours	21
Address	21

SPECIFICATIONS

Overview

N/A

Basic Information

Category: Sport Fisherman

Model Year: 2002

Year Built: 2002

Country: United States

Dimensions

LOA: 65' (19.81mm)

LWL: 59' 11" (18.26mm)

Beam: 19.33

Max Draft: 6' (1.83mm)

Speed, Capacities and Weight

Cruise Speed: 28 Knots Kts. (32 MPH)

Max Speed: 36 Knots Kts. (41 MPH)

Water Capacity: 360 Gallons

Holding Tank: 200 Gal Gallons

Fuel Capacity: 2000 Gal Gallons

Accommodations

Total Cabins: 4

Total Heads: 4

Hull and Deck Information

Hull Material: Fiberglass

Engine Information

Engines: 2

Manufacturer: MTU

Engine Type: Inboard

Fuel Type: Diesel

PHOTOS

8071761_20211016090656603_1_XLARGE



8071761_20211016091339942_1_XLARGE



8071761_20211016091343506_1_XLARGE

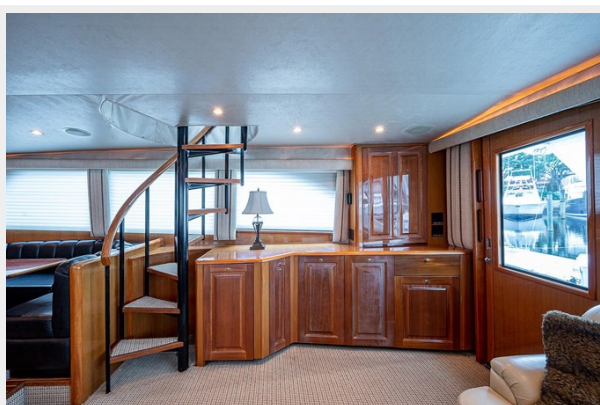


8071761_20211016091400162_1_XLARGE



8071761_20211016090904133_1_XLARGE

8071761_20211016091352970_1_XLARGE



8071761_20211016091109908_1_XLARGE



8071761_20211016090900564_1_XLARGE



8071761_20211016091132496_1_XLARGE



8071761_20211016091123072_1_XLARGE



8071761_20211016091118454_1_XLARGE



8071761_20211016091156738_1_XLARGE



8071761_20211016091136555_1_XLARGE



8071761_20211016091141543_1_XLARGE



8071761_20211016091148997_1_XLARGE



8071761_20211016091153278_1_XLARGE



8071761_20211016091145448_1_XLARGE



8071761_20211016091046266_1_XLARGE



8071761_20211016091051182_1_XLARGE



8071761_20211016091054737_1_XLARGE



8071761_20211016091038914_1_XLARGE



8071761_20211016091211678_1_XLARGE



8071761_20211016091208693_1_XLARGE



8071761_20211016091220477_1_XLARGE



8071761_20211016091205044_1_XLARGE



8071761_20211016090850468_1_XLARGE



8071761_20211016090853741_1_XLARGE



8071761_20211016090846256_1_XLARGE



8071761_20211016090857023_1_XLARGE



8071761_20211016090946507_1_XLARGE



8071761_20211016090953354_1_XLARGE

8071761_20211016090926309_1_XLARGE



8071761_20211016090922287_1_XLARGE

8071761_20211016090916057_1_XLARGE



8071761_20211016090912762_1_XLARGE



8071761_20211016090910525_1_XLARGE



8071761_20211016090907551_1_XLARGE



8071761_20211016090825852_1_XLARGE



8071761_20211016090839979_1_XLARGE

8071761_20211016090816867_1_XLARGE



8071761_20211016090843155_1_XLARGE

8071761_20211016090800634_1_XLARGE



8071761_20211016090738973_1_XLARGE

8071761_20211016090750722_1_XLARGE



8071761_20211016090744890_1_XLARGE



8071761_20211016090741616_1_XLARGE



8071761_20211016090957836_1_XLARGE



8071761_20211016091001496_1_XLARGE



8071761_20211016091007369_1_XLARGE

8071761_20211016091005225_1_XLARGE



8071761_20211016091010978_1_XLARGE



8071761_20211016091017041_1_XLARGE



8071761_20211016091224385_1_XLARGE



8071761_20211016091228428_1_XLARGE



8071761_20211016091231968_1_XLARGE



8071761_20211016091235045_1_XLARGE



8071761_20211016091239129_1_XLARGE



8071761_20211016091306209_1_XLARGE



8071761_20211016091312387_1_XLARGE



8071761_20211016091320657_1_XLARGE



CONTACTS

Andrey Shestakov, leading yacht broker of the sales department of Shestakov Yacht Sales Inc. Shestakov Yacht Sales Inc., the official representative of the Miami/Fort Lauderdale FL headquarters.

Contact details

Email: andrey@shestakovyachtsales.com

Web: shestakovyachtsales.com/en/

Telephones

USA: +1(954)274-4435

Office hours

Monday – Saturday: **9:00 - 21:00** EDT

Sunday: **closed**

Address



Harbour Towne Marina, 850 NE 3rd St,
STE 213, Dania, FL 33004