

PREDATOR 68 — SUNSEEKER



Builder: SUNSEEKER

Year Built: 2015

Model: Cruising Yacht

Price: PRICE ON APPLICATION

Location: United States

LOA: 68' (20.73m)

Cruise Speed: 24 Knots Kts. (28 MPH)

Max Speed: 33 Knots Kts. (38 MPH)

Our experienced yacht broker, Andrey Shestakov, will help you choose and buy a yacht that best suits your needs **Predator 68 — SUNSEEKER** from **our catalogue**. Presently, at **Shestakov Yacht Sales Inc.**, we have a wide variety of yachts available on **our sale's list**. We also work in close contact with all the big **yacht manufacturers** from all over the world.

If you would like to buy a yacht **Predator 68 — SUNSEEKER** or would like help answering any questions concerning purchasing, selling or chartering a yacht, please call **+1(954)274-4435**

TABLE OF CONTENTS

TABLE OF CONTENTS	2
SPECIFICATIONS	4
Overview	4
Basic Information	4
Dimensions	4
Speed, Capacities and Weight	4
Accommodations	4
Hull and Deck Information	4
Engine Information	5
PHOTOS	6
7860245_0_030520211358_0	6
7860245_0_030520211358_1	6
7860245_0_030520211358_2	6
7860245_0_030520211355_5	6
7860245_0_030520211355_6	6
7860245_0_030520211355_7	6
7860245_0_030520211355_8	7
7860245_0_030520211355_9	7
7860245_0_030520211355_10	7
7860245_0_030520211355_11	7
7860245_0_030520211355_12	7
7860245_0_030520211355_13	7
7860245_0_030520211355_14	7
7860245_0_030520211355_15	7
7860245_0_030520211355_16	8
7860245_0_030520211358_18	8
7860245_0_030520211355_17	8
7860245_0_030520211358_16	8

7860245_0_030520211358_19	8
7860245_0_030520211358_17	8
CONTACTS	9
Contact details	9
Telephones	9
Office hours	9
Address	9

SPECIFICATIONS

Overview

Breathtaking in every sense of the word, nothing signals your arrival like the Predator 68.

- Twin MAN 1550 with 540hrs! (both engines and generator recently serviced)- Fully loaded- Joystick- New Upholstery- New AC Condenser- SAT-TV- Tender Garage- Washer/Dryer combo- And many more options!

Basic Information

Category: Cruising Yacht

Model Year: 2015

Year Built: 2015

Country: United States

Dimensions

LOA: 68' (20.73mm)

Speed, Capacities and Weight

Cruise Speed: 24 Knots Kts. (28 MPH) **Cruise Speed Range:** 260

Max Speed: 33 Knots Kts. (38 MPH) **Water Capacity:** 211 Gallons

Fuel Capacity: 925 Gal Gallons

Accommodations

Total Cabins: 3

Hull and Deck Information

Hull Material: Fiberglass

Engine Information

Engines: 2

Manufacturer: MAN

Engine Type: Inboard

Fuel Type: Diesel

PHOTOS

7860245_0_030520211358_0



7860245_0_030520211358_1



7860245_0_030520211358_2



7860245_0_030520211355_5



7860245_0_030520211355_6



7860245_0_030520211355_7



7860245_0_030520211355_8



7860245_0_030520211355_9



7860245_0_030520211355_10



7860245_0_030520211355_11



7860245_0_030520211355_12



7860245_0_030520211355_13



7860245_0_030520211355_14



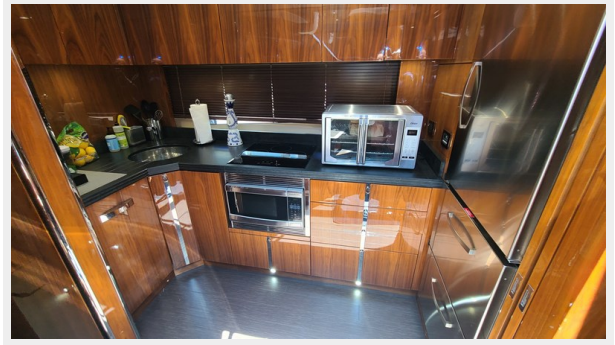
7860245_0_030520211355_15



7860245_0_030520211355_16



7860245_0_030520211358_18



7860245_0_030520211355_17



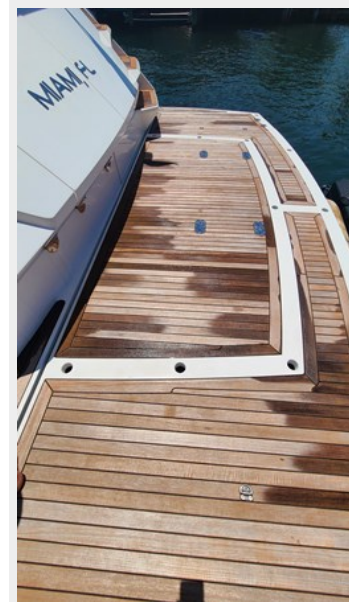
7860245_0_030520211358_16



7860245_0_030520211358_17



7860245_0_030520211358_19



CONTACTS

Andrey Shestakov, leading yacht broker of the sales department of Shestakov Yacht Sales Inc. Shestakov Yacht Sales Inc., the official representative of the Miami/Fort Lauderdale FL headquarters.

Contact details

Email: **andrey@shestakovyachtsales.com**

Web: shestakovyachtsales.com/en/

Telephones

USA: **+1(954)274-4435**

Office hours

Monday – Saturday: **9:00 - 21:00** EDT

Sunday: **closed**

Address



Harbour Towne Marina, 850 NE 3rd St, STE 213, Dania, FL 33004