

## WALIDADA — NAUTOR'S SWAN



**Builder:** NAUTOR'S SWAN

**Year Built:** 1977

**Model:** Cruising/Racing Sailboat

**Price:** PRICE ON APPLICATION

**LOA:** 47' 11" (14.6mm)

**Beam:** 13.91

**Min Draft:** 7' 11" (2.41mm)

**Max Draft:** 7' 11" (2.41mm)

**Cruise Speed:** 6 Knots Kts. (7 MPH)

**Max Speed:** 8 Knots Kts. (9 MPH)

Our experienced yacht broker, Andrey Shestakov, will help you choose and buy a yacht that best suits your needs **WALIDADA — NAUTOR'S SWAN** from our catalogue. Presently, at Shestakov Yacht Sales Inc., we have a wide variety of yachts available on our sale's list. We also work in close contact with all the big yacht manufacturers from all over the world.

If you would like to buy a yacht **WALIDADA — NAUTOR'S SWAN** or would like help answering any questions concerning purchasing, selling or chartering a yacht, please call **+1(954)274-4435**

---

# TABLE OF CONTENTS

---

TABLE OF CONTENTS	2
SPECIFICATIONS	4
Overview	4
Basic Information	4
Dimensions	4
Speed, Capacities and Weight	5
Accommodations	5
Hull and Deck Information	5
Engine Information	5
PHOTOS	6
Walidada	6
Sardinia Rolex 2016	6
Capo Coda Cavallo	6
IMG_1082	6
Walidada_1	6
Walidada_2	6
Walidada_3	7
Walidada_4	7
Walidada_6	7
Walidada_5	7
Walidada_7	7
Walidada_8	7
Walidada_9	8
Walidada_10	8
Wali deck	8
Walidada_11	8
Walidada_12	8
Walidada_13	8

---

Walidada_15	9
Walidada_14	9
Walidada_16	9
Walidada_17	9
Walidada_19	9
Walidada_20	9
Walidada_22	10
Walidada_21	10
Walidada_23	10
Walidada_24	10
CONTACTS	11
Contact details	11
Telephones	11
Office hours	11
Address	11

---

# SPECIFICATIONS

---

## Overview

---

'WALIDADA' - SPARKMAN & STEPHENS CLASSIC SWAN 47 (HULL 19)

Walidada is Hull No 19 of the S&S series of 47' which for four years was the most successful racing boat in the world winning almost all the races. It represents the peak of the Sparkman Stephens series and together with the 65 was described as the most beautiful production boat of the last century. Walidada has been informally judged the second most beautiful and well maintained classic Swan in the Mediterranean and probably beyond. The original owner was Nelson Picquet, the well known Brazilian racing driver who equipped it for long distance use, although he never raced her. His original Sailor SSB, though disconnected, is above the chart table. She had little use until 2009 when the actual owner bought her after looking for a strong untouched hull to be able to restore, and work through the challenge of keeping original lines and systems while making her practical as a modern racer cruiser. So she has been completely rebuilt under the control of Lorenzo Loik, legendary rigger and racing boat builder. Most of the work has taken place in the Orioli yard in Ravenna, and more recent work at the Nautor yard in Scarlino. These early hulls from Nautor are probably the strongest and longest lasting yacht hulls ever built. Nautor is a famously high quality builder, but at that time the naval architects did not understand the new material and they were built like wooden boats. Consequently they are heavy and sound throughout, and will last at least another fifty years if maintained.

These boats benefit from a large community of Swan Owners, the Sparkman Stephens association. Walidada has competed in every Swan cup since 2010 bringing enormous pleasure and fun to many people.

## Basic Information

---

**Category:** Cruising/Racing Sailboat

**Model Year:** 1977

**Year Built:** 1977

## Dimensions

---

**LOA:** 47' 11" (14.6mm)

**Beam:** 13.91

**Min Draft:** 7' 11" (2.41mm)

**Max Draft:** 7' 11" (2.41mm)

---

## Speed, Capacities and Weight

---

**Cruise Speed:** 6 Knots Kts. (7 MPH)

**Cruise Speed Range:** 480

**Max Speed:** 8 Knots Kts. (9 MPH)

**Max Speed Range:** 428 Kts.

**Water Capacity:** 61 Gallons

**Fuel Capacity:** 81 Gal Gallons

**Fuel Consumption:** 4 Gal Gallons

---

## Accommodations

---

**Total Cabins:** 2

**Total Berths:** 6

**Sleeps:** 6

**Total Heads:** 2

---

## Hull and Deck Information

---

**Hull Material:** GRP

**Deck Material:** Teak

**Hull Configuration:** Bulb Keel

**Hull Color:** white

**Exterior Designer:** S&S

**Interior Designer:** Nautor

---

## Engine Information

---

**Engines:** 1

**Manufacturer:** Volvo

# PHOTOS

Walidada



Sardinia Rolex 2016



Capo Coda Cavallo



IMG\_1082



Walidada\_1



Walidada\_2



Walidada\_3



Walidada\_4



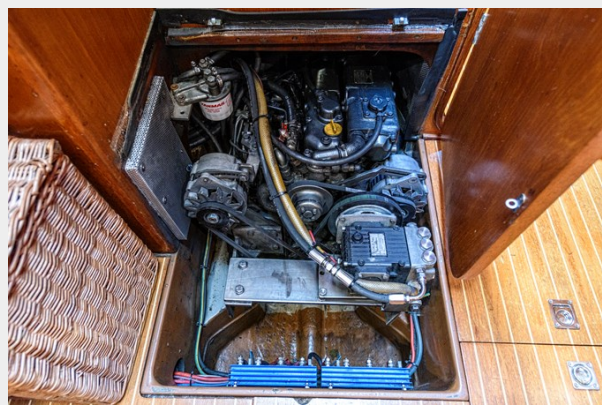
Walidada\_5



Walidada\_6



Walidada\_7



Walidada\_8



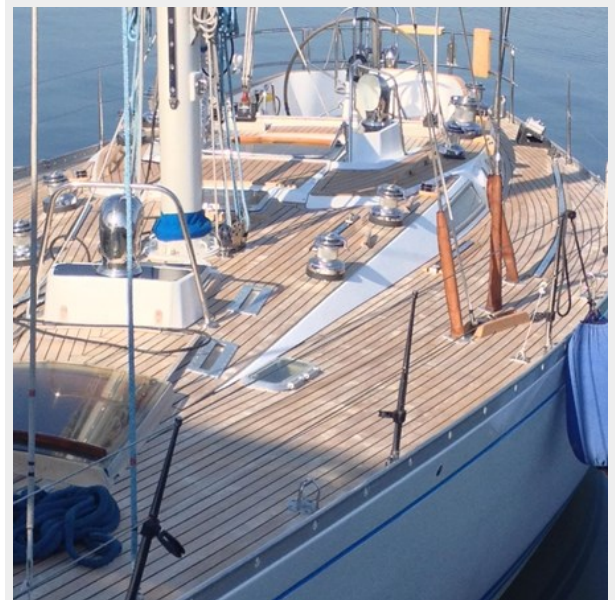
Walidada\_9



Walidada\_10



Wali deck



Walidada\_11



Walidada\_12



Walidada\_13

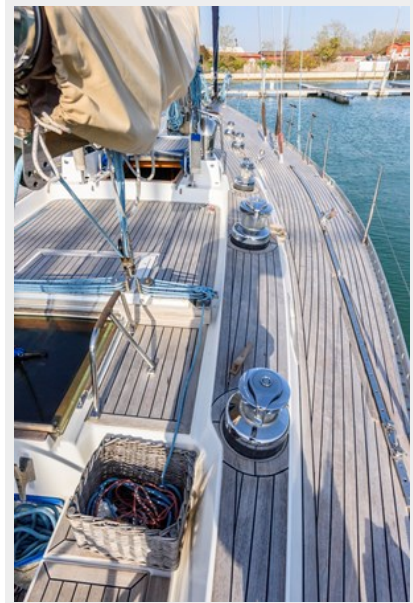




Walidada\_14



Walidada\_15



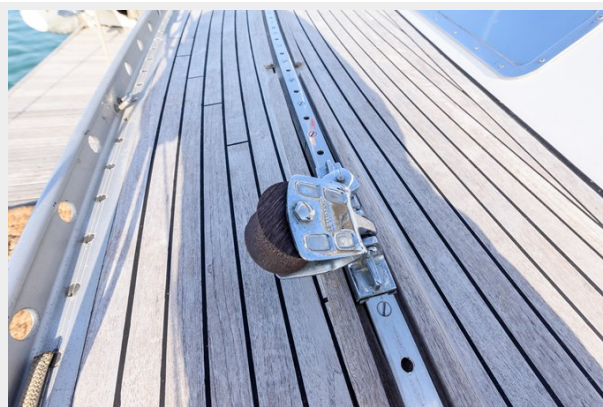
Walidada\_16



Walidada\_17



Walidada\_19



Walidada\_20



Walidada\_21



Walidada\_22



Walidada\_23



Walidada\_24



# CONTACTS

---

Andrey Shestakov, leading yacht broker of the sales department of Shestakov Yacht Sales Inc. Shestakov Yacht Sales Inc., the official representative of the Miami/Fort Lauderdale FL headquarters.

## Contact details

---

Email: [andrey@shestakovyachtsales.com](mailto:andrey@shestakovyachtsales.com)

Web: [shestakovyachtsales.com/en/](http://shestakovyachtsales.com/en/)

## Telephones

---

USA: +1(954)274-4435

## Office hours

---

Monday – Saturday: **9:00 - 21:00** EDT

Sunday: **closed**

## Address

---



Harbour Towne Marina, 850 NE 3rd St,  
STE 213, Dania, FL 33004