

## **CURFEW — DOMINATOR**



**Builder:** DOMINATOR

**Year Built:** 2009

**Model:** Motor Yacht

**Price:** PRICE ON APPLICATION

**Location:** United States

**LOA:** 95' (28.96mm)

**Beam:** 23.41

**Max Draft:** 7' 5" (2.26mm)

**Cruise Speed:** 16 Knots Kts. (18 MPH)

**Max Speed:** 24 Knots Kts. (28 MPH)

Our experienced yacht broker, Andrey Shestakov, will help you choose and buy a yacht that best suits your needs **CURFEW — DOMINATOR** from our catalogue. Presently, at **Shestakov Yacht Sales Inc.**, we have a wide variety of yachts available on our sale's list. We also work in close contact with all the big yacht manufacturers from all over the world.

If you would like to buy a yacht **CURFEW — DOMINATOR** or would like help answering any questions concerning purchasing, selling or chartering a yacht, please call **+1(954)274-4435**

# TABLE OF CONTENTS

TABLE OF CONTENTS	2
SPECIFICATIONS	7
Overview	7
Basic Information	7
Dimensions	7
Speed, Capacities and Weight	8
Accommodations	8
Hull and Deck Information	8
Engine Information	8
PHOTOS	9
Front View	9
Profile	9
Side View	9
Profile	9
Side and Stern	9
Profile	9
Side and Stern	10
Swin Platform	10
Stern View	10
Aerial Side View	10
Aerial Side View	10
Aerial Fornt View	10
Bow Jacuzzi	11
Aerial Front	11
Aerial	11
Aerial	11
Windshield	11
Bow Jacuzzi	11

Beach Club	12
Beachclub	12
Side Terrace	12
Side Terrace	12
Side Terrace	12
Terrace Aerial	12
Stern View	13
Proifile	13
Side View	13
Beach Club	13
Bow	13
Side View	13
At Night	14
Stern View	14
Sunet	14
After Deck Seating	14
Aft Deck Seating	14
Aft Deck Table	14
Aft Deck Bar	15
Aft Deck Bar and Seating	15
Aft Deck Seating	15
Aft Deck Seating	15
Aft Deck	15
Aft Deck	15
Aft Deck	16
Flybridge	16
Fly Bar and Seating	16
Fly Bar and Seating	16
Fly Bar and Seating	16

Fly Control Station	16
Fly Controls	17
Fly Controls	17
Fly Seating	17
Fly Table	17
Fly Table	17
Fly Table	17
Fly Lounge and Exercise Equipment	18
Fly Lounge	18
Exercise Equipment	18
Fly Bar And Lounge Chair	18
Bow Jacuzzi and Seating	18
Bow Jacuzzi	18
Bow Jacuzzi and sunpad	19
Bow Jacuzzi and sunpad	19
Bow Jacuzzi and sunpad	19
Salon	19
Salon	19
Salon	19
Salon	20
Salon	20
Dayhead	20
Dayhead	20
Salon Dining	20
Salon Dining	20
Master Office Area	21
Master Cabin	21
Master Cabin	21
Master Cabin	21

---

Master Bed	21
Master Bed	21
Master Bathroom Hut Tub	22
Master Bathroom Hut Tub	22
Master Bathroom Hut Tub	22
Guest Cabin	22
Guest Cabin	22
VIP Cabin	22
VIP Cabin	23
VIP Cabin	23
Twin Guest Cabin	23
Guest Bathroom	23
Pilot House	23
Pilot House	23
Pilot House	24
Pilot House	24
Crew	24
Crew	24
Crew	24
Crew	24
Engine Room Control Panel	25
Engine Room Control Panel	25
Engines	25
Engines	25
Engines	25
Engines	25
Engines	26
Engines	26
Engines	26

---

---

Engines	26
Engine Room	26
Generator	26
Engine Room	27
Engine Room Labels	27
Engine Room Labels	27
Engine Room Labels	27
Engine Room Labels	28
Engine Room Labels	28
CONTACTS	29
Contact details	29
Telephones	29
Office hours	29
Address	29

---

# SPECIFICATIONS

---

## Overview

---

### HIGHLIGHTS

- Extensive Refit 2020/2021. Presents in excellent turnkey condition
- No expense spared in services, maintenance, and upgrades
- Exterior and Interior design by Enrico Gobbi and TEAM 4 world renowned Italian firm
- Amazing volume and excellent layout for 95ft yacht
- Huge teak-decked flybridge with spaciousness not found on 100'-120' yachts!
- Hydraulic swim platform
- Bow and stern additional driving stations
- Electric hatch leading out to the private "Ocean Terrace" in master cabin
- Forward dining with retractable bimini shade canopy, sunpad area and large jacuzzi tub
- Brand new Zodiac Bay Pro 18' tender with a Yamaha 90hp
- Full Refit list upon request

## Basic Information

---

**Category:** Motor Yacht

**Sub Category:** Flybridge

**Model Year:** 2010

**Year Built:** 2009

**Refit Type:** Mechanic and cosmetic

**Country:** United States

## Dimensions

---

**LOA:** 95' (28.96mm)

**LWL:** 77' 11" (23.75mm)

**Beam:** 23.41

**Max Draft:** 7' 5" (2.26mm)

---

## Speed, Capacities and Weight

---

**Cruise Speed:** 16 Knots Kts. (18 MPH) **Cruise Speed Range:** 800

**Max Speed:** 24 Knots Kts. (28 MPH) **Max Speed Range:** 300 Kts.

**Gross Tonnage:** 156 Pounds **Water Capacity:** 700 Gallons

**Holding Tank:** 400 Gal Gallons **Fuel Capacity:** 3800 Gal Gallons

**Fuel Consumption:** 200 Gal Gallons

---

## Accommodations

---

**Total Cabins:** 4

**Total Berths:** 5

**Sleeps:** 9

**Total Heads:** 5

**Crew Cabin:** 5

**Crew Berths:** 5

**Crew Heads:** 2

---

## Hull and Deck Information

---

**Hull Material:** GRP

**Deck Material:** Teak

**Hull Configuration:** Semi-Displacement **Hull Color:** Off White

**Hull Designer:** Dominator Yachts SRL **Exterior Designer:** Enrico Gobbi TEAM  
4

**Interior Designer:** Enrico Gobbi TEAM  
4

---

## Engine Information

---

**Engines:** 2

**Manufacturer:** MTU

**Engine Type:** Inboard

**Fuel Type:** Diesel



# PHOTOS

**Profile**



**Front View**



**Side View**



**Profile**



**Profile**



**Side and Stern**



**Side and Stern**



**Swin Platform**



**Stern View**



**Aerial Side View**



**Aerial Side View**



**Aerial Fornt View**



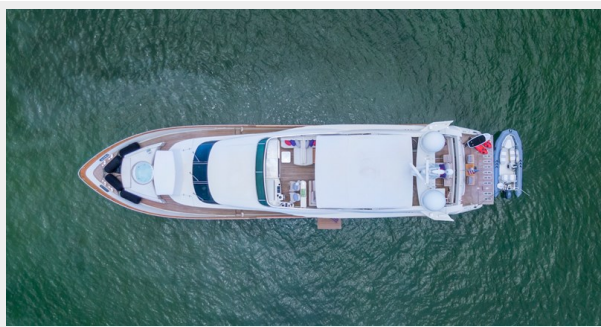
**Bow Jacuzzi**



**Aerial Front**



**Aerial**



**Aerial**



**Bow Jacuzzi**



**Windshield**



**Beach Club**



**Beachclub**



**Side Terrace**



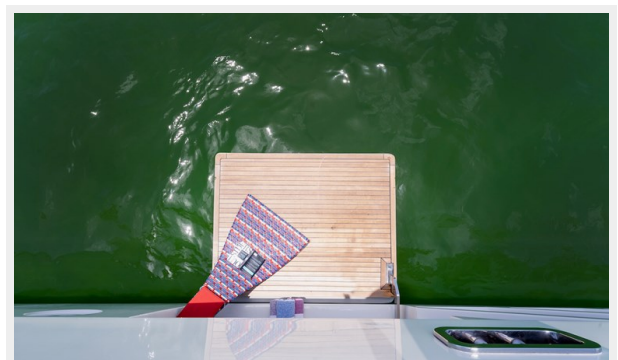
**Side Terrace**



**Side Terrace**



**Terrace Aerial**



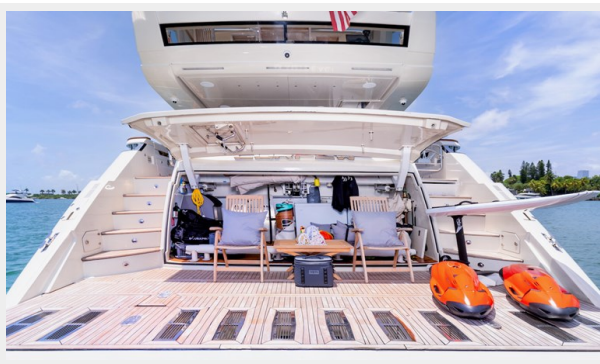
**Profile**



**Stern View**



**Beach Club**



**Side View**



**Bow**



**Side View**



**Stern View**



**At Night**



**Sunset**



**After Deck Seating**



**Aft Deck Seating**



**Aft Deck Table**



**Aft Deck Bar**



**Aft Deck Bar and Seating**



**Aft Deck Seating**



**Aft Deck Seating**



**Aft Deck**



**Aft Deck**



**Aft Deck**



**Flybridge**



**Fly Bar and Seating**



**Fly Bar and Seating**



**Fly Bar and Seating**



**Fly Control Station**





**Fly Controls**



**Fly Controls**



**Fly Seating**



**Fly Table**



**Fly Table**



**Fly Table**



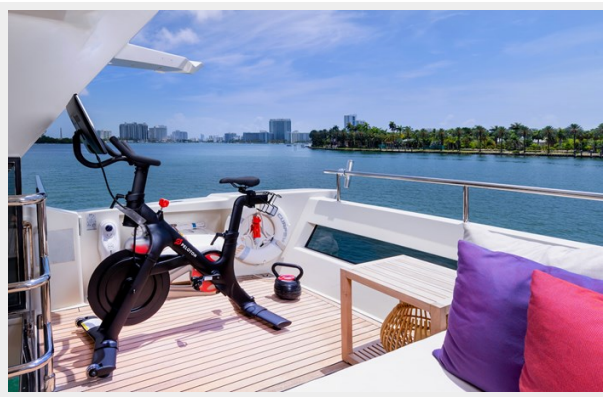
### Fly Lounge



### Fly Lounge and Exercise Equipment



### Exercise Equipment



### Fly Bar And Lounge Chair



### Bow Jacuzzi



### Bow Jacuzzi and Seating



**Bow Jacuzzi and sunpad**



**Bow Jacuzzi and sunpad**



**Bow Jacuzzi and sunpad**



**Salon**



**Salon**



**Salon**



Salon



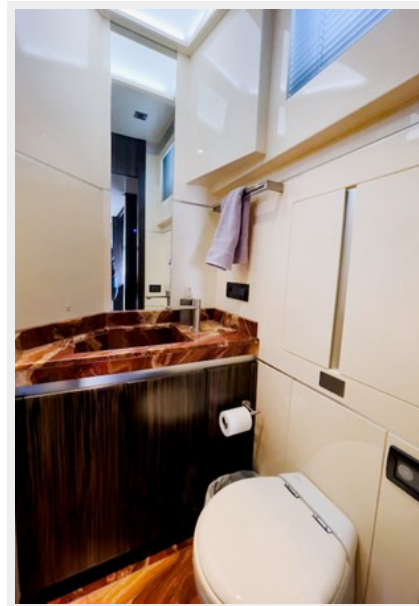
Salon



Dayhead



Dayhead



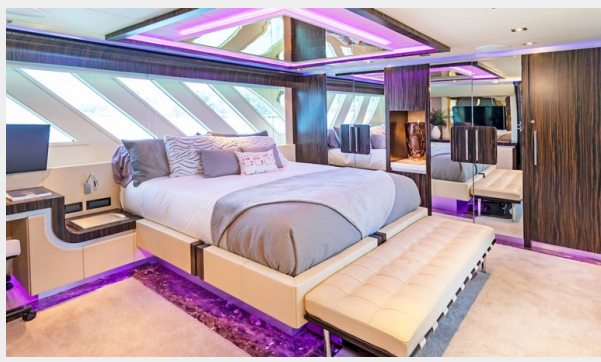
Salon Dining



Salon Dining



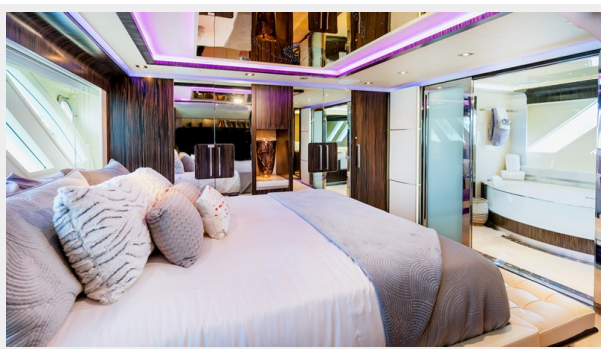
**Master Cabin**



**Master Office Area**



**Master Cabin**



**Master Cabin**



**Master Bed**



**Master Bed**



**Master Bathroom Hut Tub**



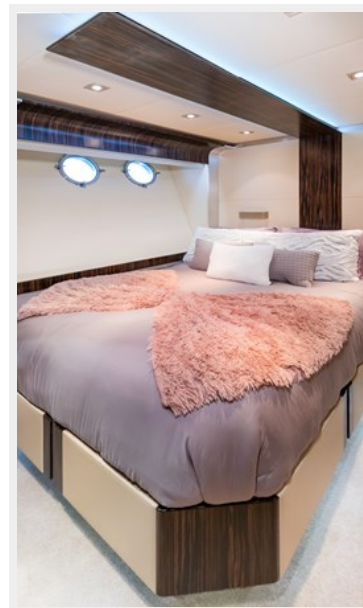
**Master Bathroom Hut Tub**



**Master Bathroom Hut Tub**



**Guest Cabin**



**Guest Cabin**



**VIP Cabin**



**VIP Cabin**



**VIP Cabin**



**Guest Bathroom**



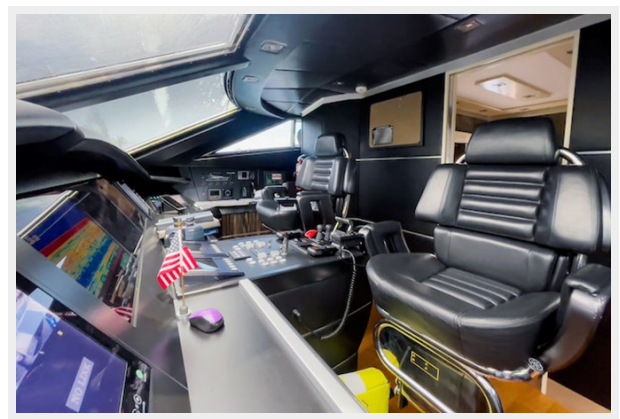
**Twin Guest Cabin**



**Pilot House**



**Pilot House**



**Pilot House**



**Pilot House**



**Crew**



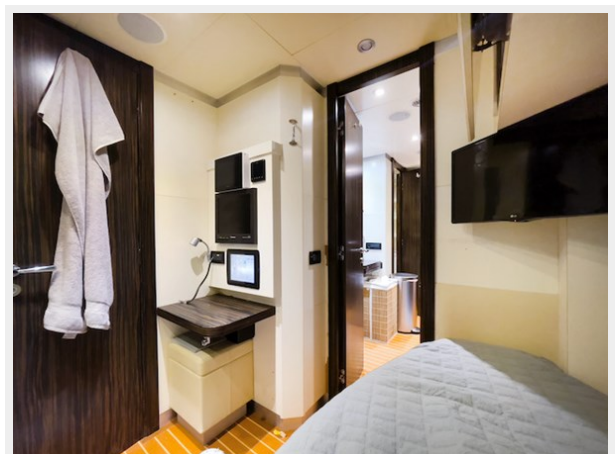
**Crew**



**Crew**

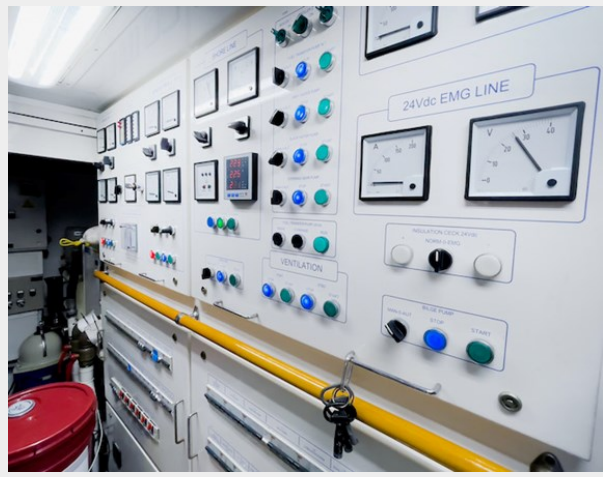


**Crew**





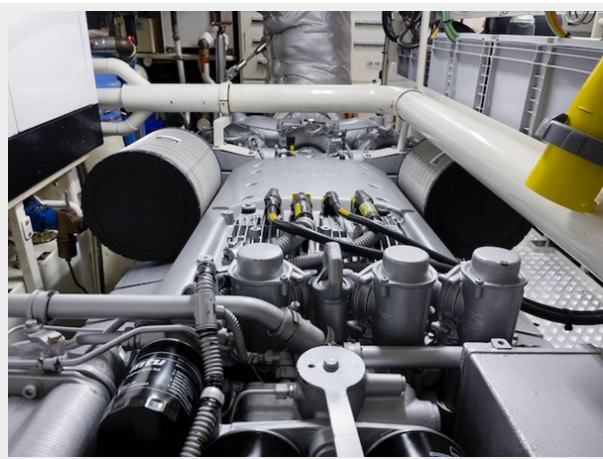
### Engine Room Control Panel



### Engine Room Control Panel



### Engines



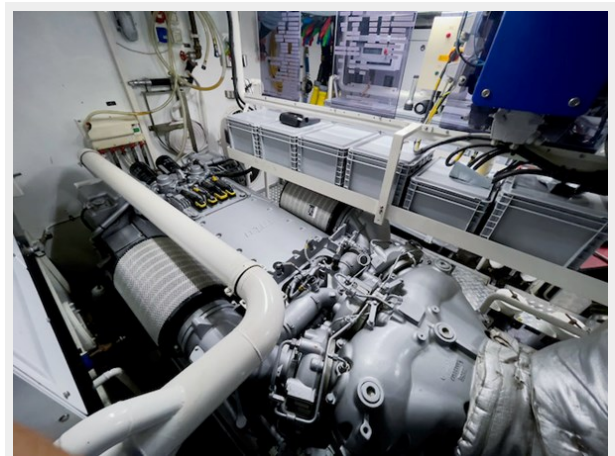
### Engines



### Engines



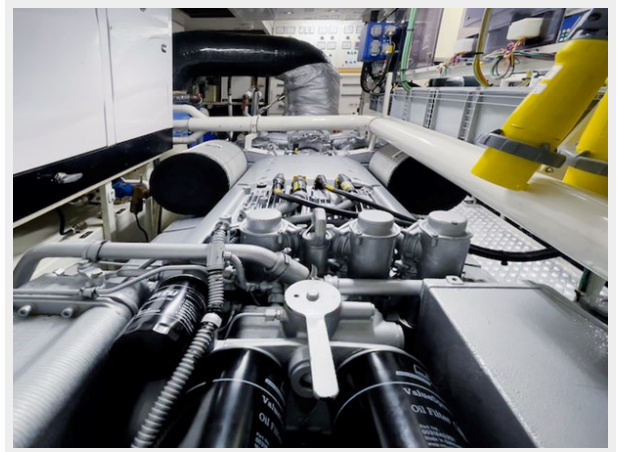
### Engines



**Engines**



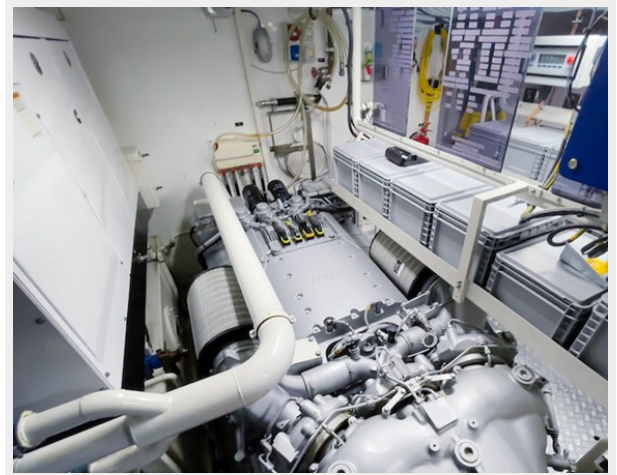
**Engines**



**Engines**



**Engines**



**Generator**



**Engine Room**



### Engine Room



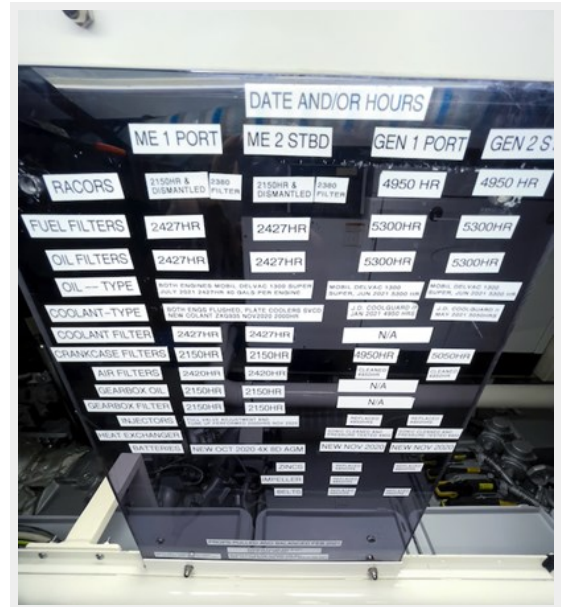
### Engine Room Labels



### Engine Room Labels



### Engine Room Labels



### Engine Room Labels



### Engine Room Labels



# CONTACTS

---

Andrey Shestakov, leading yacht broker of the sales department of Shestakov Yacht Sales Inc. Shestakov Yacht Sales Inc., the official representative of the Miami/Fort Lauderdale FL headquarters.

## Contact details

---

Email: **andrey@shestakovyachtsales.com**

Web: [shestakovyachtsales.com/en/](http://shestakovyachtsales.com/en/)

## Telephones

---

USA: **+1(954)274-4435**

## Office hours

---

Monday – Saturday: **9:00 - 21:00** EDT

Sunday: **closed**

## Address

---



Harbour Towne Marina, 850 NE 3rd St, STE 213, Dania, FL 33004