

## FAR FAR AWAY — INACE



**Builder:** INACE

**Year Built:** 2012

**Model:** Motor Yacht

**Price:** PRICE ON APPLICATION

**Location:** Italy

**LOA:** 152' 7" (46.5mm)

**Beam:** 27.55

**Max Draft:** 7' 11" (2.4mm)

**Cruise Speed:** 11 Knots Kts. (13 MPH)

**Max Speed:** 13 Knots Kts. (15 MPH)

Our experienced yacht broker, Andrey Shestakov, will help you choose and buy a yacht that best suits your needs **FAR FAR AWAY — INACE** from our catalogue. Presently, at Shestakov Yacht Sales Inc., we have a wide variety of yachts available on our sale's list. We also work in close contact with all the big yacht manufacturers from all over the world.

If you would like to buy a yacht **FAR FAR AWAY — INACE** or would like help answering any questions concerning purchasing, selling or chartering a yacht, please call **+1(954)274-4435**

# TABLE OF CONTENTS

TABLE OF CONTENTS	2
SPECIFICATIONS	4
Overview	4
Basic Information	4
Dimensions	4
Speed, Capacities and Weight	4
Accommodations	5
Hull and Deck Information	5
Engine Information	5
PHOTOS	6
MY Far Far Away (65)	6
MY Far Far Away (61)	6
MY Far Far Away (64)	6
MY Far Far Away (71)	6
MY Far Far Away (9)	6
MY Far Far Away (35)	6
MY Far Far Away (30)	7
MY Far Far Away (26)	7
MY Far Far Away (39)	7
MY Far Far Away (41)	7
MY Far Far Away (42)	7
MY Far Far Away (49)	7
MY Far Far Away (53)	8
MY Far Far Away (79)	8
MY Far Far Away (57)	8
MY Far Far Away (78)	8
MY Far Far Away (91)	8
MY Far Far Away (88)	8

---

MY Far Far Away (95)	9
MY Far Far Away (84)	9
MY Far Far Away (86)	9
MY Far Far Away (85)	9
MY Far Far Away (17)	9
MY Far Far Away (20)	9
MY Far Far Away (21)	10
MY Far Far Away (80)	10
<b>CONTACTS</b>	<b>11</b>
Contact details	11
Telephones	11
Office hours	11
Address	11

---

# SPECIFICATIONS

---

## Overview

---

FAR FAR AWAY is an exceptional explorer vessel with the capability to cruise anywhere in the world with her newly increased 8,500 nm range. Fully refitted during 2019 to 2021 refit where hull was lengthened by 8 metres, providing extra guest accommodation plus ample deck storage areas for large tenders. 7 double guest suites have been fully refitted offering spacious accommodation, with voluminous lower and upper deck saloons.

"Go anywhere" vessel in "as new" condition and keenly for sale.

## Basic Information

---

**Category:** Motor Yacht

**Sub Category:** Expedition/Explorer

**Model Year:** 2012

**Year Built:** 2012

**Refit Type:** Lengthening and full interior

**Country:** Italy

## Dimensions

---

**LOA:** 152' 7" (46.5mm)

**Beam:** 27.55

**Max Draft:** 7' 11" (2.4mm)

## Speed, Capacities and Weight

---

**Cruise Speed:** 11 Knots Kts. (13 MPH)

**Cruise Speed Range:** 8500

**Max Speed:** 13 Knots Kts. (15 MPH)

**Gross Tonnage:** 391 Pounds

**Water Capacity:** 18000 Gallons

**Holding Tank:** 528.34 Gal Gallons

**Fuel Capacity:** 25797.72 Gal Gallons

**Fuel Consumption:** 36.98 Gal Gallons

---

## Accommodations

---

**Total Cabins:** 7

**Total Berths:** 15

**Sleeps:** 15

**Total Heads:** 9

---

## Hull and Deck Information

---

**Hull Material:** Steel

**Deck Material:** Teak and Steel

**Hull Configuration:** Full Displacement

---

## Engine Information

---

**Engines:** 2

**Manufacturer:** Caterpillar

**Engine Type:** Inboard

**Fuel Type:** Diesel

# PHOTOS

**MY Far Far Away (61)**



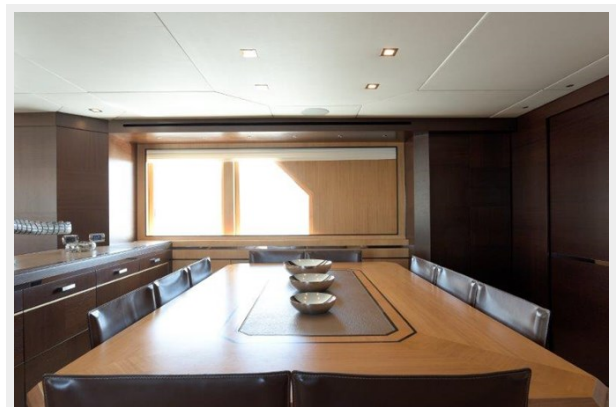
**MY Far Far Away (65)**



**MY Far Far Away (71)**



**MY Far Far Away (64)**



**MY Far Far Away (35)**



**MY Far Far Away (9)**





**MY Far Far Away (26)**



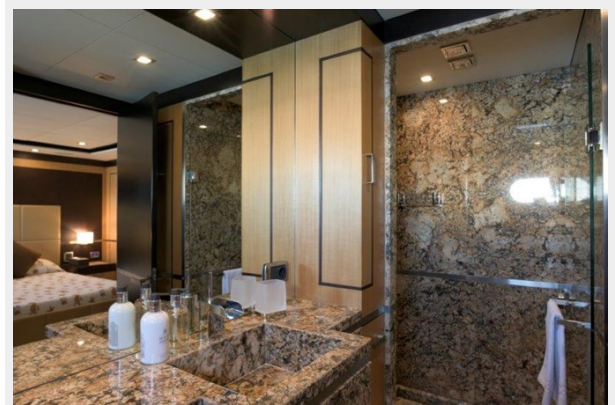
**MY Far Far Away (30)**



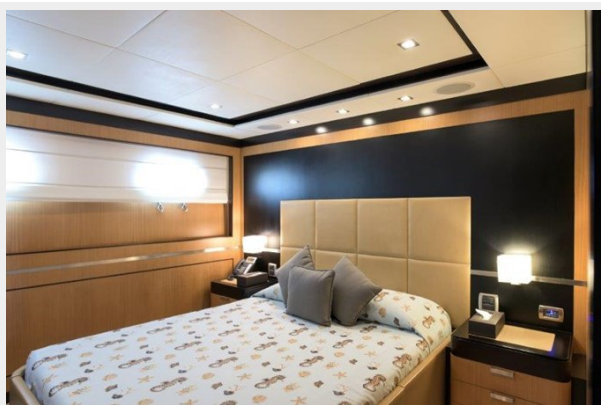
**MY Far Far Away (39)**



**MY Far Far Away (41)**



**MY Far Far Away (42)**



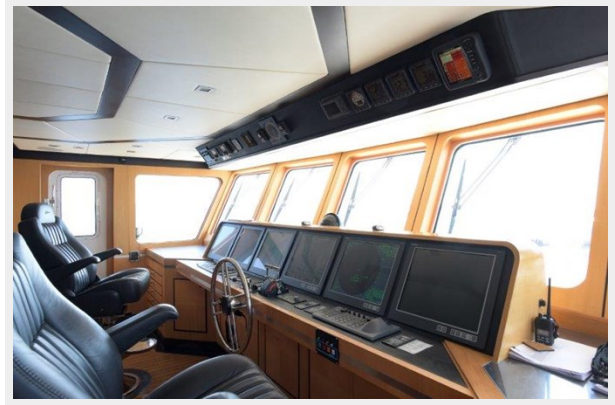
**MY Far Far Away (49)**



**MY Far Far Away (53)**



**MY Far Far Away (79)**



**MY Far Far Away (57)**



**MY Far Far Away (78)**



**MY Far Far Away (88)**



**MY Far Far Away (91)**





**MY Far Far Away (95)**



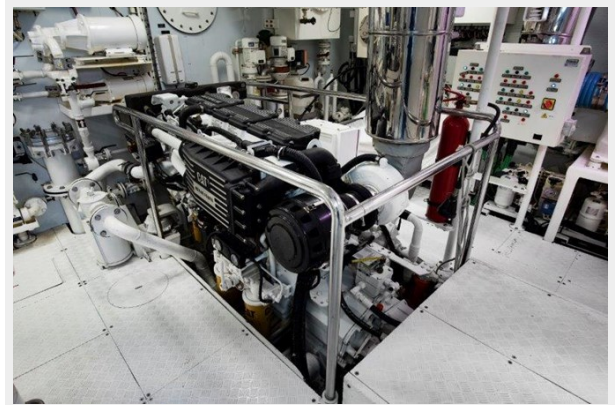
**MY Far Far Away (84)**



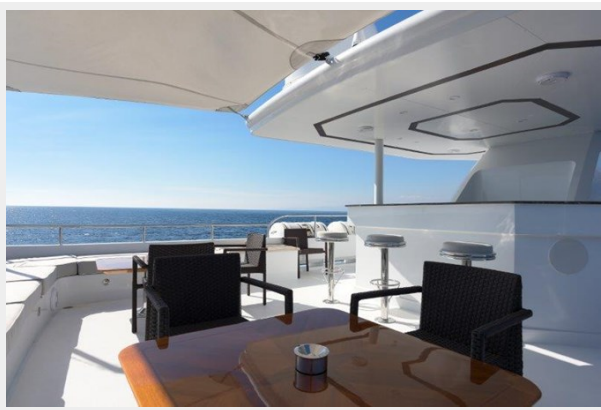
**MY Far Far Away (85)**



**MY Far Far Away (86)**



**MY Far Far Away (17)**



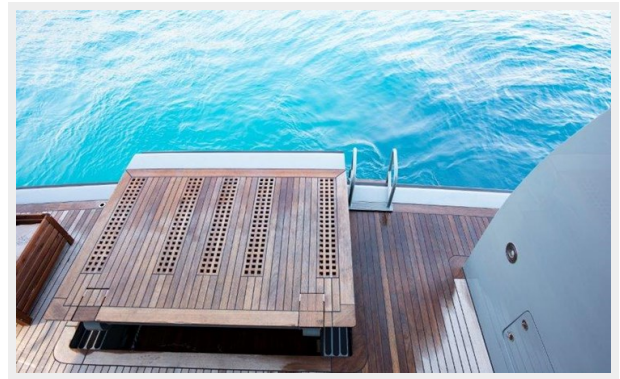
**MY Far Far Away (20)**



**MY Far Far Away (21)**



**MY Far Far Away (80)**



# CONTACTS

---

Andrey Shestakov, leading yacht broker of the sales department of Shestakov Yacht Sales Inc. Shestakov Yacht Sales Inc., the official representative of the Miami/Fort Lauderdale FL headquarters.

## Contact details

---

Email: [andrey@shestakovyachtsales.com](mailto:andrey@shestakovyachtsales.com)

Web: [shestakovyachtsales.com/en/](http://shestakovyachtsales.com/en/)

## Telephones

---

USA: +1(954)274-4435

## Office hours

---

Monday – Saturday: **9:00 - 21:00** EDT

Sunday: **closed**

## Address

---



Harbour Towne Marina, 850 NE 3rd St,  
STE 213, Dania, FL 33004