

STEELIN — ASTONDOA



Builder: [ASTONDOA](#)

Year Built: 2019

Model: Motor Yacht

Price: **PRICE ON APPLICATION**

Location: United States

LOA: 66' (20.12mm)

Beam: 18

Max Draft: 5' (1.52mm)

Our experienced yacht broker, Andrey Shestakov, will help you choose and buy a yacht that best suits your needs **STEELIN — ASTONDOA** from **our catalogue**. Presently, at **Shestakov Yacht Sales Inc.**, we have a wide variety of yachts available on **our sale's list**. We also work in close contact with all the big **yacht manufacturers** from all over the world.

If you would like to buy a yacht **STEELIN — ASTONDOA** or would like help answering any questions concerning purchasing, selling or chartering a yacht, please call **+1(954)274-4435**

TABLE OF CONTENTS

| | |
|---------------------------|---|
| TABLE OF CONTENTS | 2 |
| SPECIFICATIONS | 4 |
| Overview | 4 |
| Basic Information | 4 |
| Dimensions | 4 |
| Accommodations | 5 |
| Hull and Deck Information | 5 |
| Engine Information | 5 |
| PHOTOS | 6 |
| 1 | 6 |
| 2 | 6 |
| 3 | 6 |
| 4 | 6 |
| 6 | 6 |
| 5 | 6 |
| 10 | 7 |
| 10a | 7 |
| JIM | 7 |
| 10b | 7 |
| 11 | 7 |
| 12 | 7 |
| 13 | 8 |
| 14 | 8 |
| 16 | 8 |
| 17 | 8 |
| DSC_9259a | 8 |
| DSC_9262a | 8 |
| DSC_9263a | 9 |

| | |
|-----------------|----|
| DSC_9264a | 9 |
| DSC_9267a | 9 |
| DSC_9268a | 9 |
| DSC_9271a | 9 |
| DSC_9277a | 9 |
| DSC_9295a | 10 |
| DSC_9302a | 10 |
| DSC_9305a | 10 |
| DSC_9307a | 10 |
| DSC_9309a | 10 |
| DSC_9310a | 10 |
| CONTACTS | 11 |
| Contact details | 11 |
| Telephones | 11 |
| Office hours | 11 |
| Address | 11 |

SPECIFICATIONS

Overview

GREAT OPPORTUNITY TO OWN AN IMMACULATE ASTONDOA YACHT. The 66' Flybridge is a great size for day cruises along the Florida coast or Caribbean island hopping. It enables owners to invite more guests and still utilize a captain or crew when required. Three cabins with ensuite heads and a fourth with bunks ensure an extremely comfortable onboard experience for up to eight passengers overnight. This cruiser, with a large yacht feel, offers the best of both dimensions. The captain or owner can easily navigate the boat alone, yet there is cabin space for two additional crew members when needed. The yacht can fit in private docking spaces situated on many coastal Florida properties and, at the same time, provides ample space for pleasant long-range cruising. All the sleek furniture on the 66' Flybridge is designed and crafted at the Astilleros Astondoa shipyard in Spain. Style. The main deck is completely free of steps and the open layout includes a galley, dinette and spacious living area that extends onto the aft deck. This model is appreciated for its livability and contemporary luxury. The exterior of the Astondoa 66' Flybridge model is highly functional, it includes a large table in the middle and a smaller forward, ice maker and fridge under a Kenyon grill in the wet bar area. The aft swim platform is hydraulically operated and can serve as a beach club, diving platform or to carry a tender. On the main deck, guests can relax and dine in the aft section. At the bow, there is a spacious sun bed and lounge area where guests can enjoy the fresh sea breezes. The Astondoa 66' Flybridge motor yacht is powered by twin MAN V8-1200 engines. It can reach top speeds of 32 knots and cruises at 25 knots with an extensive 300-nm range. Equipped BOW/STERN thrusters, Seakeeper Gyro 9 Stabilizer to get rid of the roll while at anchor and underway, Tropical Air-conditioning keeps the interior space fresh and comfortable even in the scorching summer heat. "More photos to come" 30 minutes from the Boat Show

Basic Information

Category: Motor Yacht

Model Year: 2019

Year Built: 2019

Country: United States

Dimensions

LOA: 66' (20.12mm)

Beam: 18

Max Draft: 5' (1.52mm)

Accommodations

Total Cabins: 3

Total Heads: 3

Hull and Deck Information

Hull Material: Fiberglass

Engine Information

Engines: 2

Manufacturer: MAN

Engine Type: Inboard

Fuel Type: Diesel

PHOTOS

1



2



3



4



5



6



10



10a



10b



JIM



11



12



13



14



16



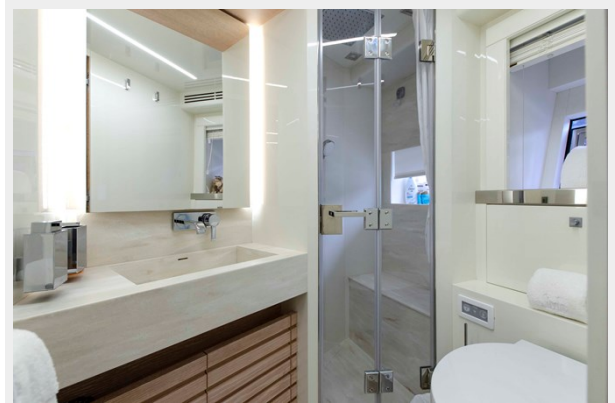
17



DSC_9259a



DSC_9262a



DSC_9263a



DSC_9264a



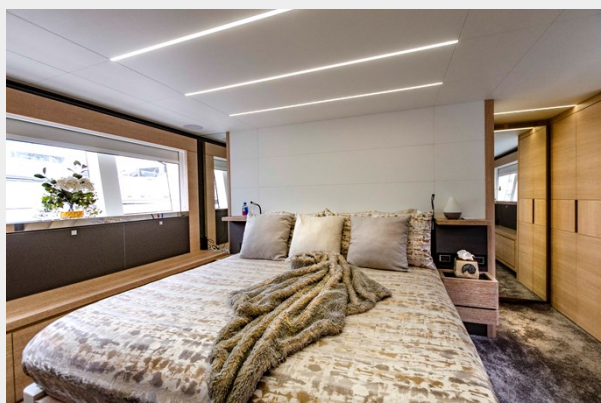
DSC_9267a



DSC_9268a



DSC_9271a



DSC_9277a



DSC_9295a



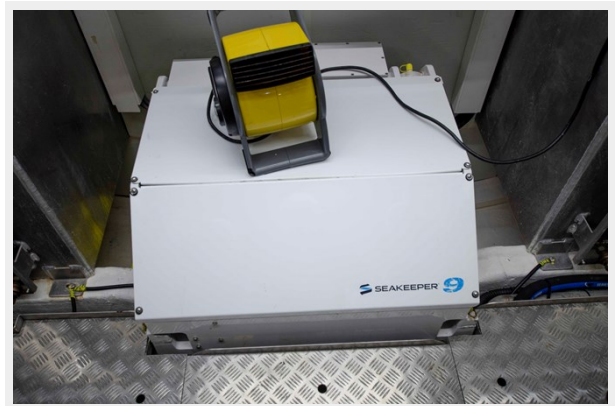
DSC_9302a



DSC_9305a



DSC_9307a



DSC_9309a



DSC_9310a



CONTACTS

Andrey Shestakov, leading yacht broker of the sales department of Shestakov Yacht Sales Inc. Shestakov Yacht Sales Inc., the official representative of the Miami/Fort Lauderdale FL headquarters.

Contact details

Email: **andrey@shestakovyachtsales.com**

Web: shestakovyachtsales.com/en/

Telephones

USA: **+1(954)274-4435**

Office hours

Monday – Saturday: **9:00 - 21:00** EDT

Sunday: **closed**

Address



Harbour Towne Marina, 850 NE 3rd St, STE 213, Dania, FL 33004