

## 2010 SEALINE T60 AURA — SEALINE



**Builder:** [SEALINE](#)

**LOA:** 61' 4" (18.69mm)

**Year Built:** 2010

**Model:** cruiser

**Price:** PRICE ON APPLICATION

**Location:** Croatia

Our experienced yacht broker, Andrey Shestakov, will help you choose and buy a yacht that best suits your needs 2010 SeaLine T60 Aura — SEALINE from our catalogue. Presently, at Shestakov Yacht Sales Inc., we have a wide variety of yachts available on our sale's list. We also work in close contact with all the big yacht manufacturers from all over the world.

If you would like to buy a yacht 2010 SeaLine T60 Aura — SEALINE or would like help answering any questions concerning purchasing, selling or chartering a yacht, please call **+1(954)274-4435**

# TABLE OF CONTENTS

TABLE OF CONTENTS	2
SPECIFICATIONS	5
Overview	5
Basic Information	5
Dimensions	5
Accommodations	5
Hull and Deck Information	5
Engine Information	5
PHOTOS	6
1617286052Sealine-T60-Aura_bow-cabin	6
1617286053Sealine-T60-Aura_bow-cabin01	6
1617286053Sealine-T60-Aura_bow-cabin02	6
1617286053Sealine-T60-Aura_bow-cabin03	6
1617286053Sealine-T60-Aura_bow	6
1617286053Sealine-T60-Aura_bow01	6
1617286054Sealine-T60-Aura_bow02	6
1617286054Sealine-T60-Aura_cockpit	6
1617286054Sealine-T60-Aura_cockpit01	7
1617286054Sealine-T60-Aura_cockpit02	7
1617286054Sealine-T60-Aura_crew-cabin-entrance	7
1617286055Sealine-T60-Aura_crew-cabin	7
1617286055Sealine-T60-Aura_door	8
1617286055Sealine-T60-Aura_crew-cabin01	8
1617286056Sealine-T60-Aura_engine-room01	8
1617286055Sealine-T60-Aura_engine-room	8
1617286056Sealine-T60-Aura_engine-room02	8
1617286056Sealine-T60-Aura_engine-room03	8
1617286057Sealine-T60-Aura_engine-room05	9

1617286057Sealine-T60-Aura_exterior	9
1617286057Sealine-T60-Aura_exterior01	9
1617286057Sealine-T60-Aura_exterior02	9
1617286058Sealine-T60-Aura_fly-helm-station	9
1617286058Sealine-T60-Aura_exterior03	9
1617286058Sealine-T60-Aura_fly-helm-station01	10
1617286058Sealine-T60-Aura_fly-helm-station02	10
1617286058Sealine-T60-Aura_fly-helm-station03	10
1617286058Sealine-T60-Aura_fly-seating	10
1617286059Sealine-T60-Aura_fly-seating01	10
1617286059Sealine-T60-Aura_fly-wet-bar	10
1617286059Sealine-T60-Aura_fly-wet-bar01	10
1617286059Sealine-T60-Aura_galley	10
1617286059Sealine-T60-Aura_galley01	11
1617286060Sealine-T60-Aura_galley02	11
1617286060Sealine-T60-Aura_galley04	11
1617286060Sealine-T60-Aura_galley05	11
1617286060Sealine-T60-Aura_guest-cabin	11
1617286060Sealine-T60-Aura_guest-cabin01	11
1617286061Sealine-T60-Aura_guest-cabin02	12
1617286061Sealine-T60-Aura_head	12
1617286061Sealine-T60-Aura_head01	12
1617286061Sealine-T60-Aura_head02	12
1617286061Sealine-T60-Aura_head03	13
1617286061Sealine-T60-Aura_head04	13
1617286062Sealine-T60-Aura_head05	13
1617286062Sealine-T60-Aura_head06	13
1617286062Sealine-T60-Aura_head08	13
1617286062Sealine-T60-Aura_head07	13

---

1617286063Sealine-T60-Aura_helm-station01	14
1617286062Sealine-T60-Aura_helm-station	14
1617286063Sealine-T60-Aura_helm-station02	14
1617286063Sealine-T60-Aura_helm-station04	14
1617286063Sealine-T60-Aura_helmstation03	14
1617286063Sealine-T60-Aura_master-cabin	14
1617286064Sealine-T60-Aura_master-cabin01	15
1617286064Sealine-T60-Aura_master-cabin02	15
1617286064Sealine-T60-Aura_master-cabin03	15
1617286064Sealine-T60-Aura_master-cabin04	15
1617286064Sealine-T60-Aura_master-cabin05	15
1617286065Sealine-T60-Aura_oven	15
1617286065Sealine-T60-Aura_panel	16
1617286065Sealine-T60-Aura_saloon	16
1617286065Sealine-T60-Aura_saloon01	16
1617286065Sealine-T60-Aura_saloon02	16
1617286066Sealine-T60-Aura_saloon03	16
1617286066Sealine-T60-Aura_stairs	16
1617286066Sealine-T60-Aura_switches-and-controls-2	17
1617286066Sealine-T60-Aura_switch-panel	17
1617286066Sealine-T60-Aura_switches-and-controls	17
1617286067Sealine-T60-Aura_wet-bar-01	17
1617286067Sealine-T60-Aura_wet-bar	17
<b>CONTACTS</b>	<b>18</b>
Contact details	18
Telephones	18
Office hours	18
Address	18

---

---

# SPECIFICATIONS

---

## Overview

---

N/A

## Basic Information

---

**Category:** cruiser

**Model Year:** 2010

**Year Built:** 2010

**Country:** Croatia

## Dimensions

---

**LOA:** 61' 4" (18.69mm)

## Accommodations

---

**Total Cabins:** 4

## Hull and Deck Information

---

**Hull Material:** Fiberglass

## Engine Information

---

**Engines:** 2

**Manufacturer:** Volvo Penta

**Engine Type:** Inboard

**Fuel Type:** Diesel

# PHOTOS

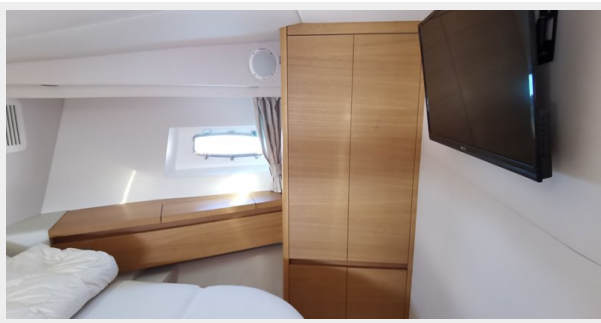
1617286052Sealine-T60-Aura\_bow-cabin



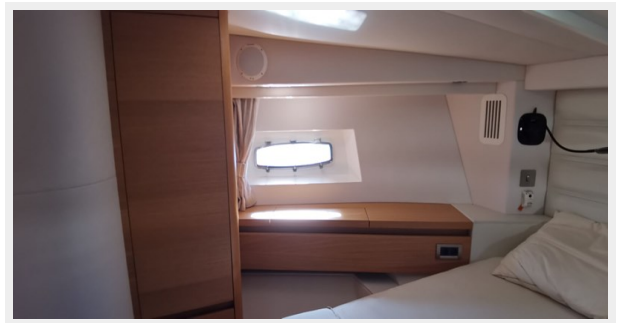
1617286053Sealine-T60-Aura\_bow-cabin01



1617286053Sealine-T60-Aura\_bow-cabin02



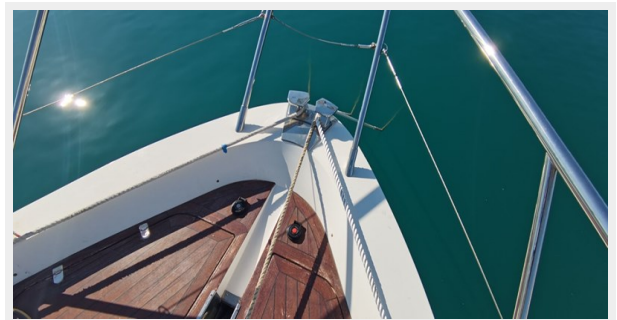
1617286053Sealine-T60-Aura\_bow-cabin03



1617286053Sealine-T60-Aura\_bow



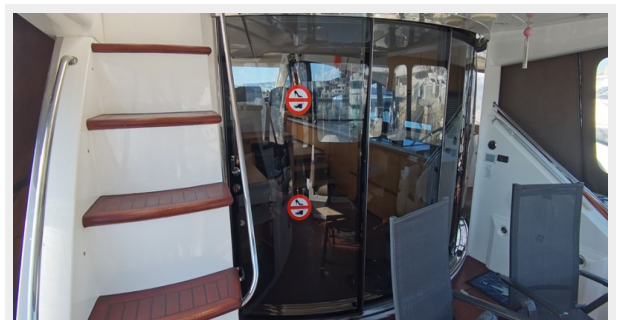
1617286053Sealine-T60-Aura\_bow01



1617286054Sealine-T60-Aura\_bow02



1617286054Sealine-T60-Aura\_cockpit



1617286054Sealine-T60-Aura\_cockpit01



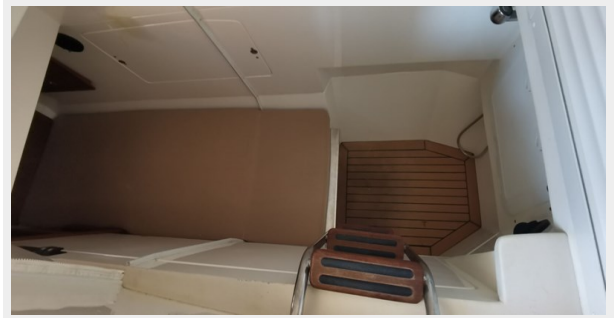
1617286054Sealine-T60-Aura\_cockpit02



1617286054Sealine-T60-Aura\_crew-cabin-entrance



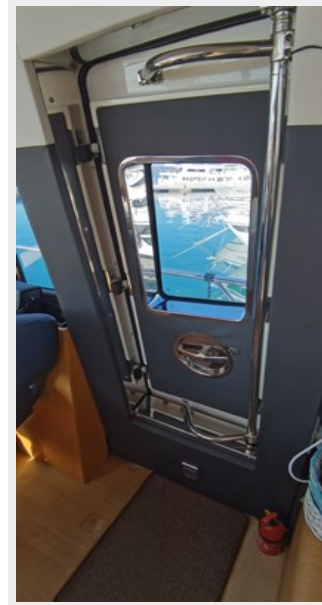
1617286055Sealine-T60-Aura\_crew-cabin



1617286055Sealine-T60-Aura\_crew-cabin01



1617286055Sealine-T60-Aura\_door



1617286055Sealine-T60-Aura\_engine-room



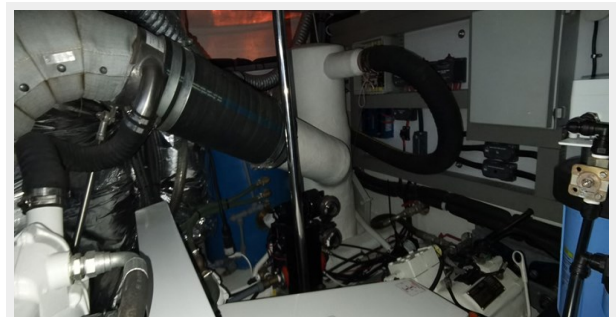
1617286056Sealine-T60-Aura\_engine-room01



1617286056Sealine-T60-Aura\_engine-room02



1617286056Sealine-T60-Aura\_engine-room03





1617286057Sealine-T60-Aura\_engine-room05



1617286057Sealine-T60-Aura\_exterior



1617286057Sealine-T60-Aura\_exterior01



1617286057Sealine-T60-Aura\_exterior02



1617286058Sealine-T60-Aura\_exterior03



1617286058Sealine-T60-Aura\_fly-helm-station



1617286058Sealine-T60-Aura\_fly-helm-station01



1617286058Sealine-T60-Aura\_fly-helm-station02



1617286058Sealine-T60-Aura\_fly-helm-station03



1617286058Sealine-T60-Aura\_fly-seating



1617286059Sealine-T60-Aura\_fly-seating01



1617286059Sealine-T60-Aura\_fly-wet-bar



1617286059Sealine-T60-Aura\_fly-wet-bar01



1617286059Sealine-T60-Aura\_galley



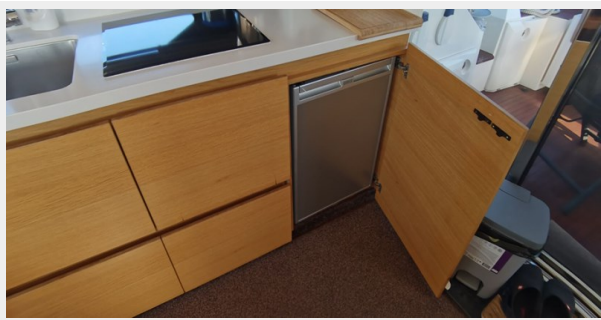
1617286059Sealine-T60-Aura\_galley01



1617286060Sealine-T60-Aura\_galley02



1617286060Sealine-T60-Aura\_galley04



1617286060Sealine-T60-Aura\_galley05



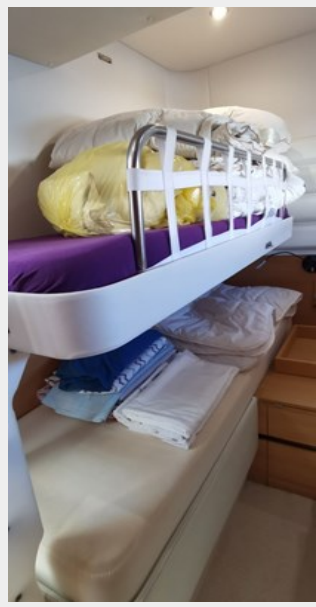
1617286060Sealine-T60-Aura\_guest-cabin



1617286060Sealine-T60-Aura\_guest-cabin01



**1617286061Sealine-T60-Aura\_guest-cabin02**



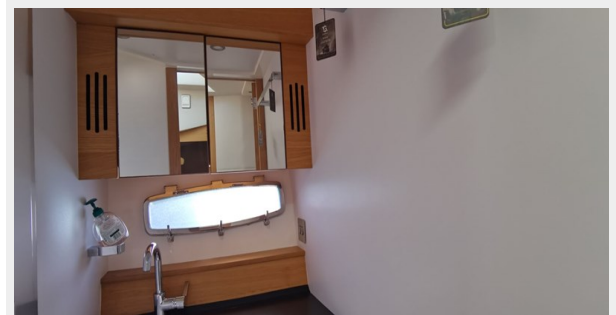
**1617286061Sealine-T60-Aura\_head**



**1617286061Sealine-T60-Aura\_head01**



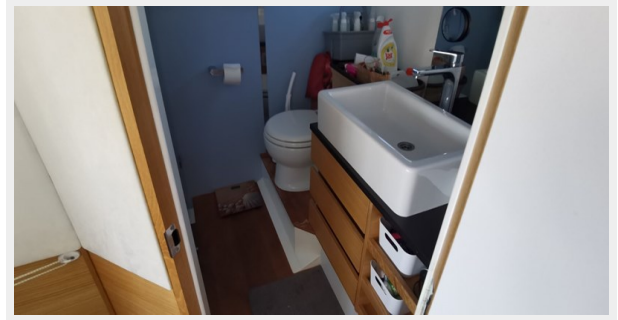
**1617286061Sealine-T60-Aura\_head02**



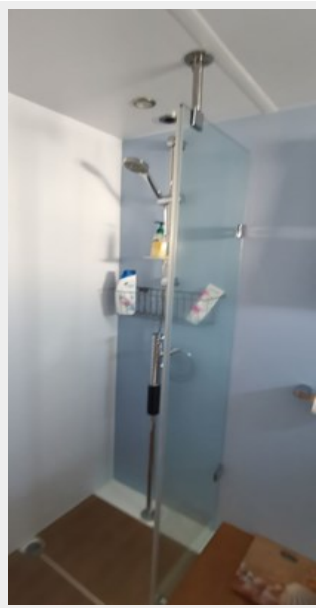
1617286061Sealine-T60-Aura\_head03



1617286061Sealine-T60-Aura\_head04



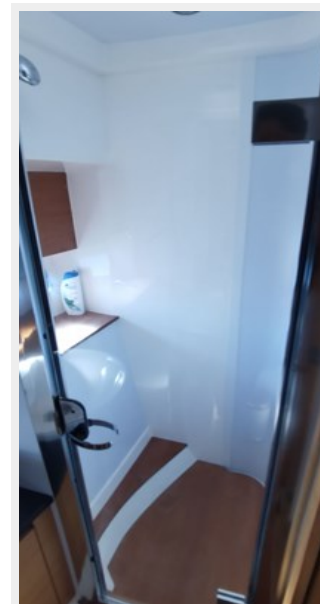
1617286062Sealine-T60-Aura\_head05



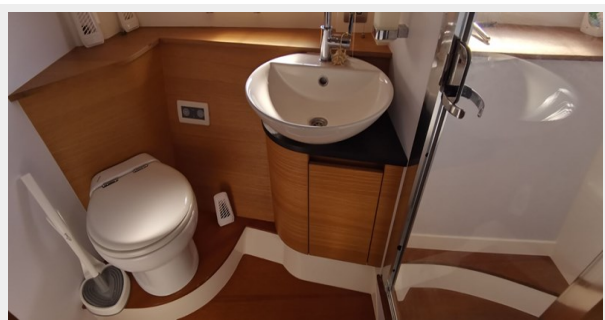
1617286062Sealine-T60-Aura\_head06



1617286062Sealine-T60-Aura\_head08



1617286062Sealine-T60-Aura\_head07



1617286062Sealine-T60-Aura\_helm-station



1617286063Sealine-T60-Aura\_helm-station01



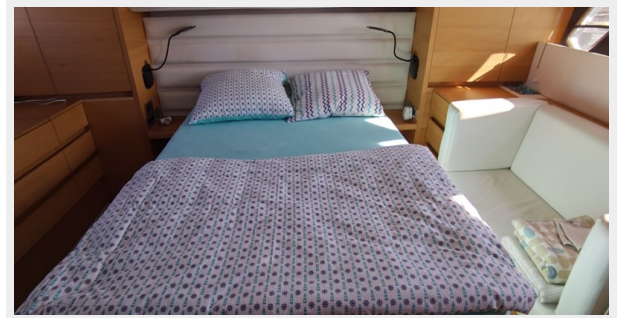
1617286063Sealine-T60-Aura\_helm-station02



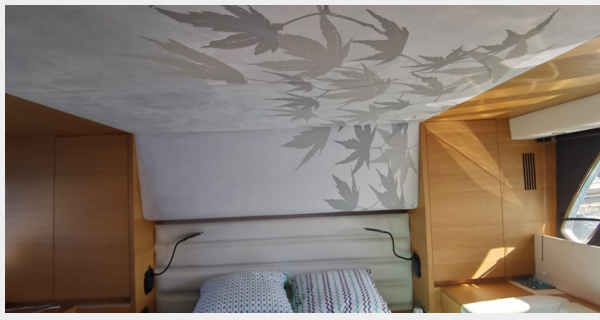
1617286063Sealine-T60-Aura\_helm-station04



1617286063Sealine-T60-Aura\_helmstation03 1617286063Sealine-T60-Aura\_master-cabin



1617286064Sealine-T60-Aura\_master-cabin01



1617286064Sealine-T60-Aura\_master-cabin02



1617286064Sealine-T60-Aura\_master-cabin03



1617286064Sealine-T60-Aura\_master-cabin04



1617286064Sealine-T60-Aura\_master-cabin05



1617286065Sealine-T60-Aura\_oven



1617286065Sealine-T60-Aura\_panel



1617286065Sealine-T60-Aura\_saloon



1617286065Sealine-T60-Aura\_saloon01



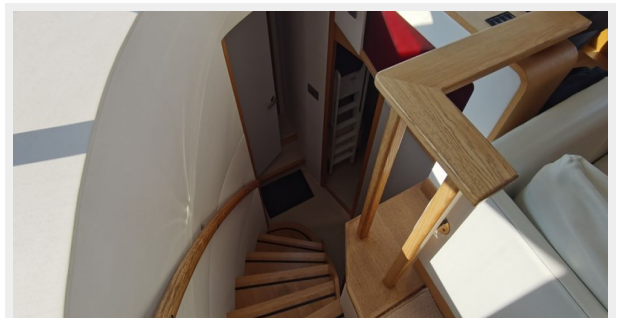
1617286065Sealine-T60-Aura\_saloon02



1617286066Sealine-T60-Aura\_saloon03



1617286066Sealine-T60-Aura\_stairs





1617286066Sealine-T60-Aura\_switch-panel



1617286066Sealine-T60-Aura\_switches-and-controls-2



1617286066Sealine-T60-Aura\_switches-and-controls



1617286067Sealine-T60-Aura\_wet-bar-01



1617286067Sealine-T60-Aura\_wet-bar



---

# CONTACTS

---

Andrey Shestakov, leading yacht broker of the sales department of Shestakov Yacht Sales Inc. Shestakov Yacht Sales Inc., the official representative of the Miami/Fort Lauderdale FL headquarters.

---

## Contact details

---

Email: [andrey@shestakovyachtsales.com](mailto:andrey@shestakovyachtsales.com)

Web: [shestakovyachtsales.com/en/](http://shestakovyachtsales.com/en/)

---

## Telephones

---

USA: +1(954)274-4435

---

## Office hours

---

Monday – Saturday: **9:00 - 21:00** EDT

Sunday: **closed**

---

## Address

---



Harbour Towne Marina, 850 NE 3rd St,  
STE 213, Dania, FL 33004