

MI ESCAPE — THOMPSON



Builder: THOMPSON

Year Built: 1977

Model: Trawler Yacht

Price: PRICE ON APPLICATION

Location: United States

LOA: 44' (13.41mm)

Beam: 15

Min Draft: 3' (0.91mm)

Max Draft: 3' 6" (1.07mm)

Our experienced yacht broker, Andrey Shestakov, will help you choose and buy a yacht that best suits your needs **Mi Escape — THOMPSON** from our catalogue. Presently, at Shestakov Yacht Sales Inc., we have a wide variety of yachts available on our sale's list. We also work in close contact with all the big yacht manufacturers from all over the world.

If you would like to buy a yacht **Mi Escape — THOMPSON** or would like help answering any questions concerning purchasing, selling or chartering a yacht, please call **+1(954)274-4435**

TABLE OF CONTENTS

TABLE OF CONTENTS	2
SPECIFICATIONS	5
Overview	5
Basic Information	5
Dimensions	5
Speed, Capacities and Weight	5
Accommodations	5
Hull and Deck Information	5
Engine Information	5
PHOTOS	6
0_2783795_44_thompson_starboard_forward_profile1	6
1_2783795_44_thompson_starboard_forward_profile2	6
2_2783795_44_thompson_port_forward_profile1	6
3_2783795_44_thompson_port_forward_profile2	6
4_2783795_44_thompson_starboard_aft_profile	6
5_2783795_44_thompson_anchor_windlass	6
6_2783795_44_thompson_foredeck	7
7_2783795_44_thompson_foredeck_aft	7
8_2783795_44_thompson_port_side_deck1	7
9_2783795_44_thompson_port_side_deck2	7
10_2783795_44_thompson_starboard_side_deck1	7
11_2783795_44_thompson_starboard_side_deck2	7
12_2783795_44_thompson_flybridge_forward	8
13_2783795_44_thompson_flybridge_aft	8
14_2783795_44_thompson_flybridge_port	8
15_2783795_44_thompson_flybridge_starboard	8
16_2783795_44_thompson_flybridge_helm1	8
17_2783795_44_thompson_flybridge_helm2	8

19_2783795_44_thompson_mast	9
18_2783795_44_thompson_flybridge_helmseats	9
20_2783795_44_thompson_trunk_cabin_forward	9
21_2783795_44_thompson_trunk_cabin_aft	9
22_2783795_44_thompson_aftdeck	9
23_2783795_44_thompson_aftdeck_port	9
24_2783795_44_thompson_aftdeck_starboard	10
25_2783795_44_thompson_swimplatform	10
26_2783795_44_thompson_salon_forward	10
27_2783795_44_thompson_salon_aft	10
28_2783795_44_thompson_salon_port	10
29_2783795_44_thompson_salon_starboard	10
30_2783795_44_thompson_salon_starboard_aft	10
31_2783795_44_thompson_lower_helm1	10
32_2783795_44_thompson_lower_helm2	11
33_2783795_44_thompson_galley1	11
34_2783795_44_thompson_galley2	11
35_2783795_44_thompson_master_stateroom_forward1	11
36_2783795_44_thompson_master_stateroom_forward2	11
37_2783795_44_thompson_master_stateroom_port	11
39_2783795_44_thompson_master_stateroom_head	12
38_2783795_44_thompson_master_stateroom_starboard	12
40_2783795_44_thompson_master_stateroom_shower	12
41_2783795_44_thompson_guest_stateroom_galley	12
43_2783795_44_thompson_guest_stateroom_head	12
42_2783795_44_thompson_guest_stateroom_berth	12
44_2783795_44_thompson_washer_dryer	13
45_2783795_44_thompson_engine_room_port_forward	13
46_2783795_44_thompson_engine_room_port_aft	13

47_2783795_44_thompson_engine_room_starboard_forward	13
48_2783795_44_thompson_engine_room_starboard_aft	13
49_2783795_44_thompson_main_engine1	13
50_2783795_44_thompson_main_engine2	13
51_2783795_44_thompson_racor_fuel_filters	13
52_2783795_44_thompson_water_heater	14
53_2783795_44_thompson_generator_soundbox	14
54_2783795_44_thompson_generator	14
55_2783795_44_thompson_running_gear	14
CONTACTS	15
Contact details	15
Telephones	15
Office hours	15
Address	15

SPECIFICATIONS

Overview

Mi Escape is a classic 44' Thompson trawler in good condition offering a single, naturally aspirated Detroit Diesel 4-53 130 HP main engine with only 2,600 hours, 12 kW generator, bowthruster, newer Garmin electronics, reverse cycle air conditioning/heating system, newer galley equipment and a clean, light, uncluttered interior. The seller is the fourth owner of the boat and bought her in Florida in 2018. Mi Escape is stored inside for the Winter, but she is accessible for inspection and survey and is Great Loop capable.

Basic Information

Category: Trawler Yacht

Model Year: 1977

Year Built: 1977

Country: United States

Dimensions

LOA: 44' (13.41mm)

Beam: 15

Min Draft: 3' (0.91mm)

Max Draft: 3' 6" (1.07mm)

Speed, Capacities and Weight

Water Capacity: 230 Gallons

Holding Tank: 45 Gal Gallons

Fuel Capacity: 710 Gal Gallons

Accommodations

Total Cabins: 2

Total Berths: 2

Total Heads: 2

Hull and Deck Information

Hull Material: Fiberglass

Engine Information

Engines: 1

Manufacturer: Detroit Diesel

Engine Type: Inboard

Fuel Type: Diesel

PHOTOS

0_2783795_44_thompson_starboard_forward_profile1 1_2783795_44_thompson_starboard_forward_profile2



2_2783795_44_thompson_port_forward_profile1



3_2783795_44_thompson_port_forward_profile2



4_2783795_44_thompson_starboard_aft_profile



5_2783795_44_thompson_anchor_windlass



6_2783795_44_thompson_foredeck



7_2783795_44_thompson_foredeck_aft



8_2783795_44_thompson_port_side_deck1



9_2783795_44_thompson_port_side_deck2



10_2783795_44_thompson_starboard_side_deck1



11_2783795_44_thompson_starboard_side_deck2



12_2783795_44_thompson_flybridge_forward



13_2783795_44_thompson_flybridge_aft



14_2783795_44_thompson_flybridge_port



15_2783795_44_thompson_flybridge_starboard



16_2783795_44_thompson_flybridge_helm1



17_2783795_44_thompson_flybridge_helm2



18_2783795_44_thompson_flybridge_helmseats



19_2783795_44_thompson_mast



20_2783795_44_thompson_trunk_cabin_forward



21_2783795_44_thompson_trunk_cabin_aft



22_2783795_44_thompson_aftdeck



23_2783795_44_thompson_aftdeck_port



24_2783795_44_thompson_aftdeck_starboard



25_2783795_44_thompson_swimplatform



26_2783795_44_thompson_salon_forward



27_2783795_44_thompson_salon_aft



28_2783795_44_thompson_salon_port



29_2783795_44_thompson_salon_starboard



30_2783795_44_thompson_salon_starboard_aft



31_2783795_44_thompson_lower_helm1



32_2783795_44_thompson_lower_helm2



33_2783795_44_thompson_galley1



34_2783795_44_thompson_galley2



35_2783795_44_thompson_master_stateroom_forward1



36_2783795_44_thompson_master_stateroom_forward2



37_2783795_44_thompson_master_stateroom_port



39_2783795_44_thompson_master_stateroom_head

38_2783795_44_thompson_master_stateroom_starboard



40_2783795_44_thompson_master_stateroom_shower



41_2783795_44_thompson_guest_stateroom_galley



43_2783795_44_thompson_guest_stateroom_head

42_2783795_44_thompson_guest_stateroom_berth



44_2783795_44_thompson_washer_dryer



45_2783795_44_thompson_engine_room_port_forward



46_2783795_44_thompson_engine_room_port_aft 47_2783795_44_thompson_engine_room_starboard_forward



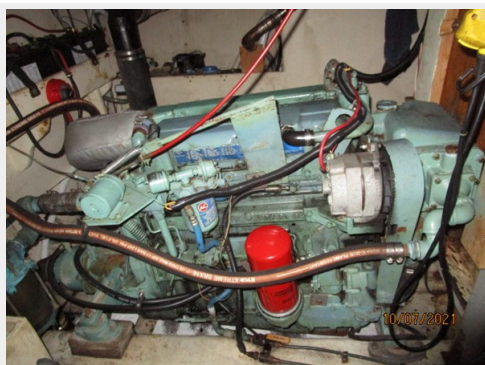
48_2783795_44_thompson_engine_room_starboard_aft



49_2783795_44_thompson_main_engine1



50_2783795_44_thompson_main_engine2



51_2783795_44_thompson_racor_fuel_filters



52_2783795_44_thompson_water_heater



53_2783795_44_thompson_generator_soundbox



54_2783795_44_thompson_generator



55_2783795_44_thompson_running_gear



CONTACTS

Andrey Shestakov, leading yacht broker of the sales department of Shestakov Yacht Sales Inc. Shestakov Yacht Sales Inc., the official representative of the Miami/Fort Lauderdale FL headquarters.

Contact details

Email:
andrey@shestakovyachtsales.com

Web: shestakovyachtsales.com/en/

Telephones

USA: +1(954)274-4435

Office hours

Monday – Saturday: **9:00 - 21:00** EDT

Sunday: **closed**

Address



Harbour Towne Marina, 850 NE 3rd St,
STE 213, Dania, FL 33004