

## GRAY WOLF — SPARKMAN & STEPHENS



**Builder:** SPARKMAN & STEPHENS

**Year Built:** 1960

**Model:** Sport Fisherman

**Price:** PRICE ON APPLICATION

**Location:** United States

**LOA:** 43' (13.11mm)

**Beam:** 12.75

**Max Draft:** 2' 11" (0.89mm)

Our experienced yacht broker, Andrey Shestakov, will help you choose and buy a yacht that best suits your needs **Gray Wolf — SPARKMAN & STEPHENS** from our catalogue. Presently, at **Shestakov Yacht Sales Inc.**, we have a wide variety of yachts available on our sale's list. We also work in close contact with all the big **yacht manufacturers** from all over the world.

If you would like to buy a yacht **Gray Wolf — SPARKMAN & STEPHENS** or would like help answering any questions concerning purchasing, selling or chartering a yacht, please call **+1(954)274-4435**

# TABLE OF CONTENTS

TABLE OF CONTENTS	2
SPECIFICATIONS	5
Overview	5
Basic Information	5
Dimensions	5
Speed, Capacities and Weight	5
Accommodations	6
Hull and Deck Information	6
Engine Information	6
PHOTOS	7
8078986_20211116112112543_1_XLARGE	7
8078986_20211116112122052_1_XLARGE	7
8078986_20211116112149810_1_XLARGE	7
8078986_20211116112142273_1_XLARGE	7
8078986_20211116112159247_1_XLARGE	8
8078986_20211116112134871_1_XLARGE	8
8078986_20211116112213395_1_XLARGE	8
8078986_20211116112216250_1_XLARGE	8
8078986_20211116112204441_1_XLARGE	9
8078986_20211116112218125_1_XLARGE	9
8078986_20211116112336797_1_XLARGE	9
8078986_20211116112256393_1_XLARGE	9
8078986_20211116112237165_1_XLARGE	10
8078986_20211116112259164_1_XLARGE	10
8078986_20211116112226668_1_XLARGE	10
8078986_20211116112246259_1_XLARGE	10
8078986_20211116112308293_1_XLARGE	11
8078986_20211116112327809_1_XLARGE	11

---

8078986_20211116112333073_1_XLARGE	11
8078986_20211116112335120_1_XLARGE	11
8078986_20211116112331067_1_XLARGE	12
8078986_20211116112315763_1_XLARGE	12
8078986_20211116112406526_1_XLARGE	12
8078986_20211116112345113_1_XLARGE	12
8078986_20211116112435653_1_XLARGE	13
8078986_20211116112403715_1_XLARGE	13
8078986_20211116112511251_1_XLARGE	13
8078986_20211116112415788_1_XLARGE	13
8078986_20211116112443616_1_XLARGE	14
8078986_20211116112452739_1_XLARGE	14
8078986_20211116112501202_1_XLARGE	14
8078986_20211116112355371_1_XLARGE	14
8078986_20211116112515924_1_XLARGE	15
8078986_20211116112518969_1_XLARGE	15
8078986_20211116112520946_1_XLARGE	15
8078986_20211116112532945_1_XLARGE	15
8078986_20211116112527476_1_XLARGE	16
8078986_20211116112539344_1_XLARGE	16
8078986_20211116112126745_1_XLARGE	16
8078986_20211116112124140_1_XLARGE	16
8078986_20211116112053597_1_XLARGE	16
8078986_20211116112101094_1_XLARGE	16
CONTACTS	17
Contact details	17
Telephones	17
Office hours	17
Address	17

---



---

# SPECIFICATIONS

---

## Overview

---

Update; Vessel failed survey. Beautiful topsides very good condition, motors have low hrs, and everything works, has generator with 31 hrs on it, but structural issues with the keelson, frames and planking.

Looking for ALL OFFERS, from the right party with the skills to repair, who can ensure the next chapter in this Classic Yacht's history.

Call for complete details.

1960 43' Custom built Sparkman and Stephens down east Sportsman, built by Knutson in Huntington NY. One of a kind, well cared for Sportfish cruiser, in very good condition. Twin Cummins 6BTA 315hp, with low hours, generator with 30hrs, radar, gps, stereo, auto pilot, propane stove, refrigerator, vacuflush head, hot water heater and much more. Very efficient cruise at 17knts, 1800rpm. Turns heads everywhere she goes. If you love classic wood boats this is your chance to own a piece of history.

Own something unique and irreplaceable. They could never build them like this again and if they tried to replicate this hand quality custom yacht it would cost many millions of dollars.

Seller looking for good home to custodian to this piece of history. Will consider trades, boats, classic cars etc.

---

## Basic Information

---

**Category:** Sport Fisherman

**Model Year:** 1960

**Year Built:** 1960

**Country:** United States

---

## Dimensions

---

**LOA:** 43' (13.11mm)

**Beam:** 12.75

**Max Draft:** 2' 11" (0.89mm)

---

## Speed, Capacities and Weight

---

**Water Capacity:** 150 Gallons

**Holding Tank:** 20 Gal Gallons

**Fuel Capacity:** 320 Gal Gallons

---

## Accommodations

---

**Total Cabins:** 2

---

## Hull and Deck Information

---

**Hull Material:** Wood

---

## Engine Information

---

**Engines:** 2

**Manufacturer:** Cummins

**Engine Type:** Inboard

**Fuel Type:** Diesel

# PHOTOS

8078986\_20211116112112543\_1\_XLARGE 8078986\_20211116112122052\_1\_XLARGE



8078986\_20211116112149810\_1\_XLARGE

8078986\_20211116112142273\_1\_XLARGE





**8078986\_20211116112159247\_1\_XLARGE**



**8078986\_20211116112134871\_1\_XLARGE**

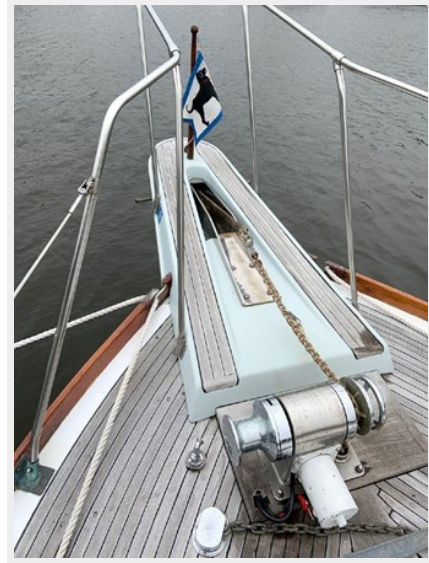


**8078986\_20211116112213395\_1\_XLARGE 8078986\_20211116112216250\_1\_XLARGE**





8078986\_20211116112204441\_1\_XLARGE 8078986\_20211116112218125\_1\_XLARGE



8078986\_20211116112336797\_1\_XLARGE 8078986\_20211116112256393\_1\_XLARGE



8078986\_20211116112237165\_1\_XLARGE 8078986\_20211116112259164\_1\_XLARGE

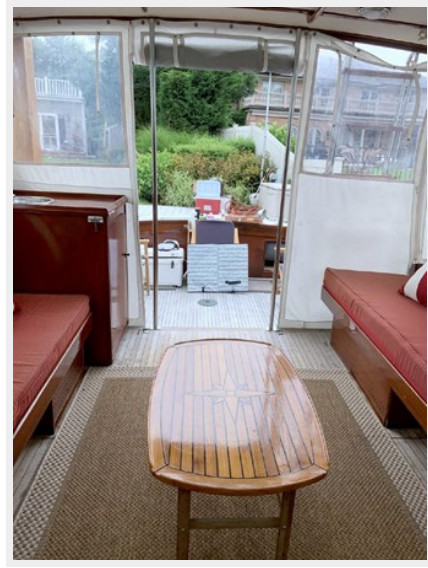


8078986\_20211116112226668\_1\_XLARGE 8078986\_20211116112246259\_1\_XLARGE





8078986\_20211116112308293\_1\_XLARGE 8078986\_20211116112327809\_1\_XLARGE



8078986\_20211116112333073\_1\_XLARGE 8078986\_20211116112335120\_1\_XLARGE



8078986\_20211116112331067\_1\_XLARGE 8078986\_20211116112315763\_1\_XLARGE



8078986\_20211116112406526\_1\_XLARGE 8078986\_20211116112345113\_1\_XLARGE





8078986\_20211116112435653\_1\_XLARGE

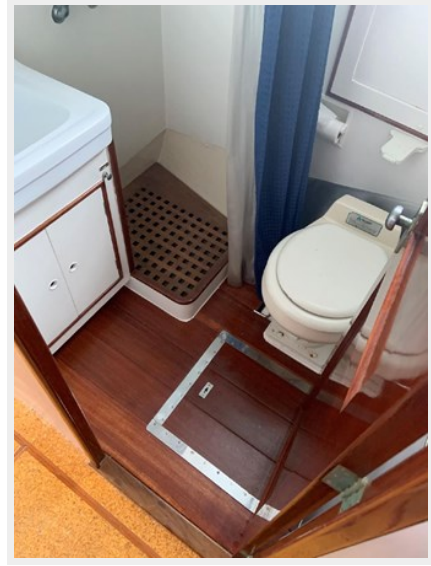
8078986\_20211116112403715\_1\_XLARGE



8078986\_20211116112511251\_1\_XLARGE 8078986\_20211116112415788\_1\_XLARGE



8078986\_20211116112443616\_1\_XLARGE 8078986\_20211116112452739\_1\_XLARGE



8078986\_20211116112501202\_1\_XLARGE 8078986\_20211116112355371\_1\_XLARGE



8078986\_20211116112515924\_1\_XLARGE 8078986\_20211116112518969\_1\_XLARGE



8078986\_20211116112520946\_1\_XLARGE

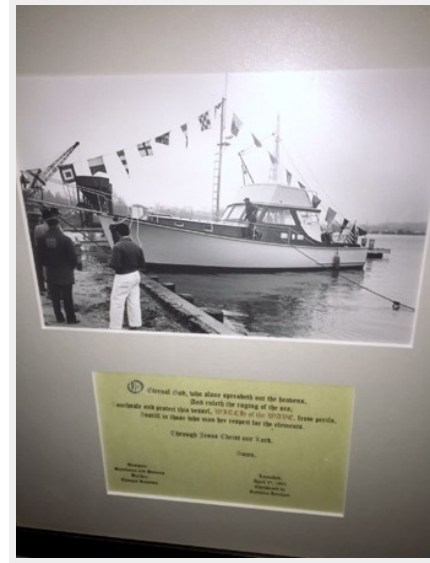


8078986\_20211116112532945\_1\_XLARGE





8078986\_20211116112527476\_1\_XLARGE 8078986\_20211116112539344\_1\_XLARGE



8078986\_20211116112126745\_1\_XLARGE 8078986\_20211116112124140\_1\_XLARGE



8078986\_20211116112053597\_1\_XLARGE 8078986\_20211116112101094\_1\_XLARGE



# CONTACTS

---

Andrey Shestakov, leading yacht broker of the sales department of Shestakov Yacht Sales Inc. Shestakov Yacht Sales Inc., the official representative of the Miami/Fort Lauderdale FL headquarters.

## Contact details

---

Email: **andrey@shestakovyachtsales.com**

Web: [shestakovyachtsales.com/en/](http://shestakovyachtsales.com/en/)

## Telephones

---

USA: **+1(954)274-4435**

## Office hours

---

Monday – Saturday: **9:00 - 21:00** EDT

Sunday: **closed**

## Address

---



Harbour Towne Marina, 850 NE 3rd St, STE 213, Dania, FL 33004