

KAKA'AKO — BLUEWATER YACHTING



Builder: BLUEWATER YACHTING

Year Built: 1987

Model: Boats

Price: PRICE ON APPLICATION

LOA: 51' (15.54mm)

Beam: 13.91

Max Draft: 1' 9" (0.53mm)

Our experienced yacht broker, Andrey Shestakov, will help you choose and buy a yacht that best suits your needs **Kaka'ako — BLUEWATER YACHTING** from our catalogue. Presently, at **Shestakov Yacht Sales Inc.**, we have a wide variety of yachts available on our sale's list. We also work in close contact with all the big **yacht manufacturers** from all over the world.

If you would like to buy a yacht **Kaka'ako — BLUEWATER YACHTING** or would like help answering any questions concerning purchasing, selling or chartering a yacht, please call **+1(954)274-4435**

TABLE OF CONTENTS

| | |
|------------------------------------|---|
| TABLE OF CONTENTS | 2 |
| SPECIFICATIONS | 5 |
| Overview | 5 |
| Basic Information | 5 |
| Dimensions | 5 |
| Speed, Capacities and Weight | 5 |
| Accommodations | 5 |
| Hull and Deck Information | 5 |
| Engine Information | 6 |
| PHOTOS | 7 |
| 8074768_20211020101000469_1_XLARGE | 7 |
| 8074768_20211020100956384_1_XLARGE | 7 |
| 8074768_20211020100952247_1_XLARGE | 7 |
| 8074768_20211020101005638_1_XLARGE | 7 |
| 8074768_20211020101009378_1_XLARGE | 7 |
| 8074768_20211020101013670_1_XLARGE | 7 |
| 8074768_20211020101017451_1_XLARGE | 8 |
| 8074768_20211020101020333_1_XLARGE | 8 |
| 8074768_20211020101024371_1_XLARGE | 8 |
| 8074768_20211020101028496_1_XLARGE | 8 |
| 8074768_20211020101032484_1_XLARGE | 8 |
| 8074768_20211020101036476_1_XLARGE | 8 |
| 8074768_20211020101049943_1_XLARGE | 9 |
| 8074768_20211020101053744_1_XLARGE | 9 |
| 8074768_20211020101040708_1_XLARGE | 9 |
| 8074768_20211020101044786_1_XLARGE | 9 |
| 8074768_20211020101057919_1_XLARGE | 9 |
| 8074768_20211020101214697_1_XLARGE | 9 |

| | |
|------------------------------------|----|
| 8074768_20211020101218562_1_XLARGE | 10 |
| 8074768_20211020101101865_1_XLARGE | 10 |
| 8074768_20211020101110265_1_XLARGE | 10 |
| 8074768_20211020101114115_1_XLARGE | 10 |
| 8074768_20211020101122296_1_XLARGE | 10 |
| 8074768_20211020101118169_1_XLARGE | 10 |
| 8074768_20211020101138246_1_XLARGE | 11 |
| 8074768_20211020101142391_1_XLARGE | 11 |
| 8074768_20211020101154309_1_XLARGE | 11 |
| 8074768_20211020101146700_1_XLARGE | 11 |
| 8074768_20211020101150262_1_XLARGE | 11 |
| 8074768_20211020101157150_1_XLARGE | 11 |
| 8074768_20211020101201153_1_XLARGE | 12 |
| 8074768_20211020101204138_1_XLARGE | 12 |
| 8074768_20211020101208222_1_XLARGE | 12 |
| 8074768_20211020101210822_1_XLARGE | 12 |
| 8074768_20211020101106183_1_XLARGE | 12 |
| 8074768_20211020101222606_1_XLARGE | 12 |
| 8074768_20211020101237759_1_XLARGE | 13 |
| 8074768_20211020101233546_1_XLARGE | 13 |
| 8074768_20211020101229395_1_XLARGE | 13 |
| 8074768_20211020101224943_1_XLARGE | 13 |
| 8074768_20211020101126425_1_XLARGE | 13 |
| 8074768_20211020101130138_1_XLARGE | 13 |
| 8074768_20211020101134220_1_XLARGE | 14 |
| 8074768_20211020101240841_1_XLARGE | 14 |
| 8074768_20211020101244862_1_XLARGE | 14 |
| 8074768_20211020101252886_1_XLARGE | 14 |
| 8074768_20211020101257046_1_XLARGE | 14 |

| | |
|------------------------------------|----|
| 8074768_20211020101248955_1_XLARGE | 14 |
| 8074768_20211020100949026_1_XLARGE | 15 |
| CONTACTS | 16 |
| Contact details | 16 |
| Telephones | 16 |
| Office hours | 16 |
| Address | 16 |

SPECIFICATIONS

Overview

All Custom Vessel, Refit in 2016 In/Out, Powered By Reliable Twin 300hp Verados, Only 280hours, Dual Garmin 94sv Displays, VHF-Radio-Depth-Compass, Dual 18,000BTU Flagship Reverse Cycle A/C, 10kW Kohler Gen, 14ft Beam, Only 21in Draft, 208 Gallons Fuel.

Basic Information

Category: Boats

Sub Category: Houseboat

Model Year: 1987

Year Built: 1987

Dimensions

LOA: 51' (15.54mm)

Beam: 13.91

Max Draft: 1' 9" (0.53mm)

Speed, Capacities and Weight

Water Capacity: 450 Gallons

Holding Tank: 80 Gal Gallons

Fuel Capacity: 208 Gal Gallons

Accommodations

Total Cabins: 1

Hull and Deck Information

Hull Material: Fiberglass

Engine Information

Engines: 2

Manufacturer: Mercury

Engine Type: Outboard

Fuel Type: Gas/Petrol

PHOTOS

8074768_20211020101000469_1_XLARGE 8074768_20211020100956384_1_XLARGE



8074768_20211020100952247_1_XLARGE 8074768_20211020101005638_1_XLARGE



8074768_20211020101009378_1_XLARGE 8074768_20211020101013670_1_XLARGE



8074768_20211020101017451_1_XLARGE 8074768_20211020101020333_1_XLARGE



8074768_20211020101024371_1_XLARGE 8074768_20211020101028496_1_XLARGE



8074768_20211020101032484_1_XLARGE 8074768_20211020101036476_1_XLARGE



8074768_20211020101049943_1_XLARGE 8074768_20211020101053744_1_XLARGE



8074768_20211020101040708_1_XLARGE 8074768_20211020101044786_1_XLARGE



8074768_20211020101057919_1_XLARGE 8074768_20211020101214697_1_XLARGE



8074768_20211020101218562_1_XLARGE 8074768_20211020101101865_1_XLARGE



8074768_20211020101110265_1_XLARGE 8074768_20211020101114115_1_XLARGE



8074768_20211020101122296_1_XLARGE 8074768_20211020101118169_1_XLARGE



8074768_20211020101138246_1_XLARGE 8074768_20211020101142391_1_XLARGE



8074768_20211020101154309_1_XLARGE 8074768_20211020101146700_1_XLARGE



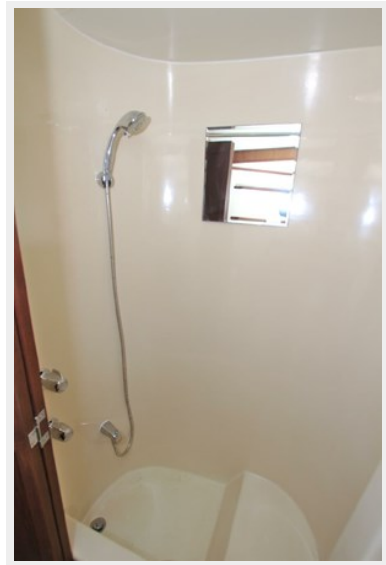
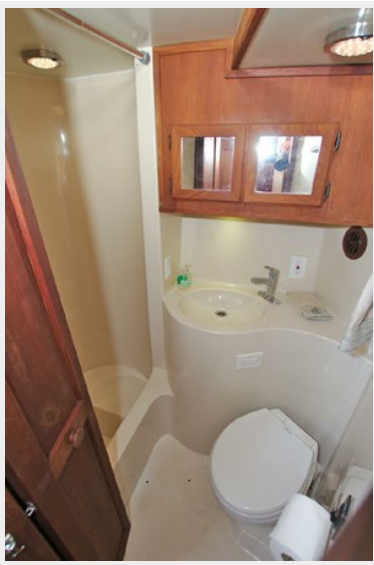
8074768_20211020101150262_1_XLARGE 8074768_20211020101157150_1_XLARGE



8074768_20211020101201153_1_XLARGE 8074768_20211020101204138_1_XLARGE



8074768_20211020101208222_1_XLARGE 8074768_20211020101210822_1_XLARGE



8074768_20211020101106183_1_XLARGE 8074768_20211020101222606_1_XLARGE



8074768_20211020101237759_1_XLARGE 8074768_20211020101233546_1_XLARGE



8074768_20211020101229395_1_XLARGE 8074768_20211020101224943_1_XLARGE



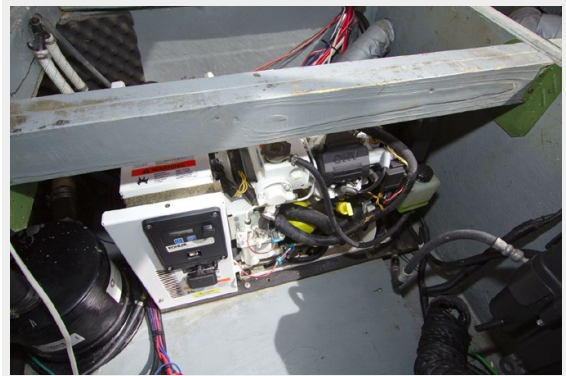
8074768_20211020101126425_1_XLARGE 8074768_20211020101130138_1_XLARGE



8074768_20211020101134220_1_XLARGE 8074768_20211020101240841_1_XLARGE



8074768_20211020101244862_1_XLARGE 8074768_20211020101252886_1_XLARGE



8074768_20211020101257046_1_XLARGE



8074768_20211020101248955_1_XLARGE



8074768_20211020100949026_1_XLARGE



CONTACTS

Andrey Shestakov, leading yacht broker of the sales department of Shestakov Yacht Sales Inc. Shestakov Yacht Sales Inc., the official representative of the Miami/Fort Lauderdale FL headquarters.

Contact details

Email: **andrey@shestakovyachtsales.com**

Web: shestakovyachtsales.com/en/

Telephones

USA: **+1(954)274-4435**

Office hours

Monday – Saturday: **9:00 - 21:00** EDT

Sunday: **closed**

Address



Harbour Towne Marina, 850 NE 3rd St, STE 213, Dania, FL 33004