

HUTIANE — CUSTOM



Builder: CUSTOM

Year Built: 2011

Model: Catamaran

Price: PRICE ON APPLICATION

Location: France

LOA: 101' 9" (31mm)

Beam: 40.25

Cruise Speed: 9 Knots Kts. (10 MPH)

Max Speed: 13 Knots Kts. (15 MPH)

Our experienced yacht broker, Andrey Shestakov, will help you choose and buy a yacht that best suits your needs **Hutiane — CUSTOM** from our catalogue. Presently, at Shestakov Yacht Sales Inc., we have a wide variety of yachts available on our sale's list. We also work in close contact with all the big yacht manufacturers from all over the world.

If you would like to buy a yacht **Hutiane — CUSTOM** or would like help answering any questions concerning purchasing, selling or chartering a yacht, please call **+1(954)274-4435**

TABLE OF CONTENTS

TABLE OF CONTENTS	2
SPECIFICATIONS	4
Overview	4
Basic Information	4
Dimensions	4
Speed, Capacities and Weight	4
Accommodations	4
Hull and Deck Information	5
Engine Information	5
PHOTOS	6
IMG-7660	6
IMG-7659	6
IMG-7661	6
IMG-7662	6
IMG-7664	7
IMG-7663	7
IMG-7666	7
IMG-7665	7
IMG-7668	7
IMG-7667	7
IMG-7670	8
IMG-7669	8
IMG-7672	8
IMG-7671	8
IMG-7674	8
IMG-7673	8
IMG-7675	9
IMG-7676	9

IMG-7677	9
IMG-7678	9
IMG-7679	9
IMG-7680	9
CONTACTS	10
Contact details	10
Telephones	10
Office hours	10
Address	10

SPECIFICATIONS

Overview

This floating palace by Cuneo Marine will seduce you as much with its elegant decor as with the quality of its services. On board you will enjoy 350m² of upscale amenities and thoughtful design, 4 fully appointed and well-equipped cabins with private bathrooms, and also a generously roomy living space with a beautiful lounge and a dining area. Outside of your accommodation, the decks of the Hutiane are also equipped and furnished with the utmost care and consideration. Passengers enjoy the pleasures of the large upper deck, where there is an outdoor seating area, a shaded dining area and comfortable chairs. The lower deck houses a Jacuzzi, the ideal spot for relaxing while enjoying a fine view of the sea. The Hutiane also has internet access, WiFi and all the high-tech equipment necessary to meet your requirements

Basic Information

Category: Catamaran

Model Year: 2011

Year Built: 2011

Country: France

Dimensions

LOA: 101' 9" (31mm)

Beam: 40.25

Speed, Capacities and Weight

Cruise Speed: 9 Knots Kts. (10 MPH)

Max Speed: 13 Knots Kts. (15 MPH)

Fuel Consumption: 31.7 Gal Gallons

Accommodations

Total Cabins: 4

Hull and Deck Information

Hull Material: Advanced Composites

Engine Information

Engines: 2

Manufacturer: Iveco

Engine Type: Inboard

Fuel Type: Diesel

PHOTOS

IMG-7659



IMG-7660



IMG-7661



IMG-7662



IMG-7663



IMG-7664



IMG-7665



IMG-7666



IMG-7667



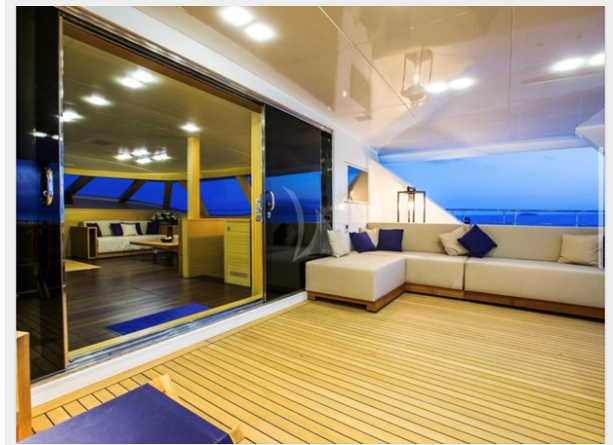
IMG-7668



IMG-7669



IMG-7670



IMG-7672



IMG-7671



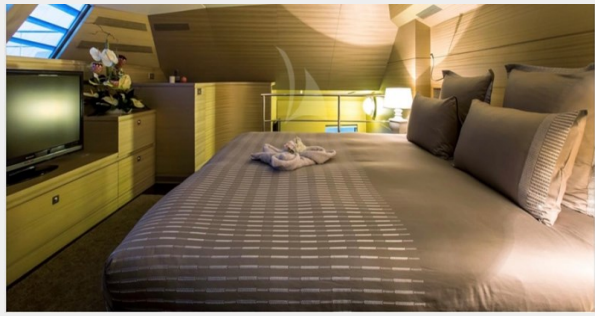
IMG-7674



IMG-7673



IMG-7675



IMG-7676



IMG-7677



IMG-7678



IMG-7679



IMG-7680



CONTACTS

Andrey Shestakov, leading yacht broker of the sales department of Shestakov Yacht Sales Inc. Shestakov Yacht Sales Inc., the official representative of the Miami/Fort Lauderdale FL headquarters.

Contact details

Email: andrey@shestakovyachtsales.com

Web: shestakovyachtsales.com/en/

Telephones

USA: +1(954)274-4435

Office hours

Monday – Saturday: **9:00 - 21:00** EDT

Sunday: **closed**

Address



Harbour Towne Marina, 850 NE 3rd St,
STE 213, Dania, FL 33004