

MUTUAL FUN — SILVERTON



Builder: SILVERTON

Year Built: 2006

Model: Motor Yacht

Price: PRICE ON APPLICATION

LOA: 43' (13.11mm)

Beam: 14

Max Draft: 3' 11" (1.19mm)

Cruise Speed: 13.9 Knots Kts. (16 MPH)

Max Speed: 17.38 Knots Kts. (20 MPH)

Our experienced yacht broker, Andrey Shestakov, will help you choose and buy a yacht that best suits your needs **Mutual Fun — SILVERTON** from **our catalogue**. Presently, at **Shestakov Yacht Sales Inc.**, we have a wide variety of yachts available on **our sale's list**. We also work in close contact with all the big **yacht manufacturers** from all over the world.

If you would like to buy a yacht **Mutual Fun — SILVERTON** or would like help answering any questions concerning purchasing, selling or chartering a yacht, please call **+1(954)274-4435**

TABLE OF CONTENTS

TABLE OF CONTENTS	2
SPECIFICATIONS	6
Overview	6
Basic Information	6
Dimensions	6
Speed, Capacities and Weight	6
Accommodations	7
Hull and Deck Information	7
Engine Information	7
PHOTOS	8
2_2784252_	8
0_2784252_	8
3_2784252_	8
4_2784252_	8
5_2784252_	8
6_2784252_	8
7_2784252_	9
8_2784252_	9
9_2784252_	9
10_2784252_	9
11_2784252_	9
12_2784252_	9
13_2784252_	10
14_2784252_	10
15_2784252_	10
16_2784252_	10
17_2784252_	10
18_2784252_	10

19_2784252_	11
20_2784252_	11
21_2784252_	11
22_2784252_	11
23_2784252_	11
24_2784252_	11
25_2784252_	12
26_2784252_	12
27_2784252_	12
28_2784252_	12
29_2784252_	12
30_2784252_	12
31_2784252_	13
32_2784252_	13
33_2784252_	13
34_2784252_	13
35_2784252_	13
36_2784252_	13
37_2784252_	14
38_2784252_	14
39_2784252_	14
40_2784252_	14
41_2784252_	14
42_2784252_	14
43_2784252_	15
44_2784252_	15
45_2784252_	15
46_2784252_	15
47_2784252_	15

48_2784252_	15
49_2784252_	16
50_2784252_	16
51_2784252_	16
52_2784252_	16
54_2784252_	16
53_2784252_	16
55_2784252_	17
56_2784252_	17
57_2784252_	17
58_2784252_	17
59_2784252_	18
60_2784252_	18
61_2784252_	18
62_2784252_	18
63_2784252_	19
64_2784252_	19
66_2784252_	19
65_2784252_	19
67_2784252_	20
68_2784252_	20
69_2784252_	20
70_2784252_	20
71_2784252_	20
72_2784252_	20
73_2784252_	21
74_2784252_	21
75_2784252_	21
76_2784252_	21

77_2784252_	21
78_2784252_	21
79_2784252_	22
80_2784252_	22
81_2784252_	22
82_2784252_	22
83_2784252_	22
CONTACTS	23
Contact details	23
Telephones	23
Office hours	23
Address	23

SPECIFICATIONS

Overview

The Silverton 39 Motor Yacht has become one of Silverton's most successful models. Boarding Mutual Fun is like being on a boat that is brand new - that is how clean and meticulously maintained she is. Mutual Fun's low profile and wide stance (14' beam) make for an excellent ride. The expansive dimensions of the interior with an average 6'9" headroom, 2 heads, ability to sleep 6, forward and aft staterooms and a spacious open salon and galley. The level of creature comforts makes her a great "Looper" boat (16'7" bridge clearance) or weekend end cruiser with the speed (16 mph cruise) for extended exploring. Mutual Fun has rich solid cherry woods, created solid cherry raised panel doors, and extended the use of genuine Corian countertops. Top-grade interior hardware, and Flexsteel sofas (sleeper) and settees with UltraLeather surfaces. The "SideWalk" system (bow deck side entrance from both port and starboard of the flybridge helm) reduces the number of steps, and provides a safe and easy bow deck access for line handling etc.. Powered by a pair of Yanmar low hour diesel engines.

Basic Information

Category: Motor Yacht

Model Year: 2006

Year Built: 2006

Dimensions

LOA: 43' (13.11mm)

Beam: 14

Max Draft: 3' 11" (1.19mm)

Speed, Capacities and Weight

Cruise Speed: 13.9 Knots Kts. (16 MPH)

Max Speed: 17.38 Knots Kts. (20 MPH)

Water Capacity: 100 Gallons

Holding Tank: 60 Gal Gallons

Fuel Capacity: 162 Gal Gallons

Accommodations

Total Cabins: 2

Total Berths: 2

Total Heads: 2

Hull and Deck Information

Hull Material: Fiberglass

Engine Information

Engines: 2

Manufacturer: Yanmar

Engine Type: Inboard

Fuel Type: Diesel

PHOTOS

0_2784252_



2_2784252_



3_2784252_



4_2784252_



5_2784252_



6_2784252_



7_2784252_



8_2784252_



9_2784252_



10_2784252_



11_2784252_



12_2784252_



13_2784252_



14_2784252_



15_2784252_



16_2784252_



17_2784252_



18_2784252_



19_2784252_



20_2784252_



21_2784252_



22_2784252_



23_2784252_



24_2784252_



25_2784252_



26_2784252_



27_2784252_



28_2784252_



29_2784252_



30_2784252_



31_2784252_



32_2784252_



33_2784252_



34_2784252_



35_2784252_



36_2784252_



37_2784252_



38_2784252_



39_2784252_



40_2784252_



41_2784252_



42_2784252_



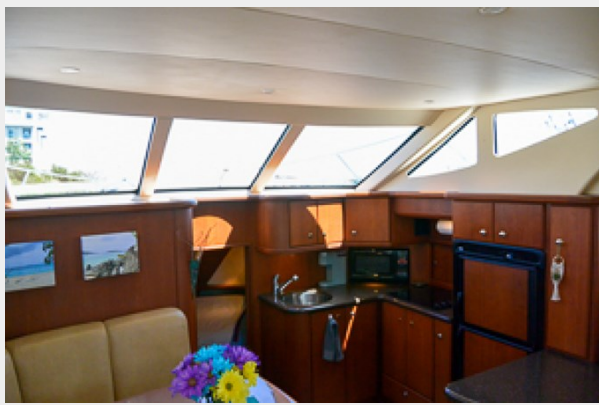
43_2784252_



44_2784252_



45_2784252_



46_2784252_



47_2784252_



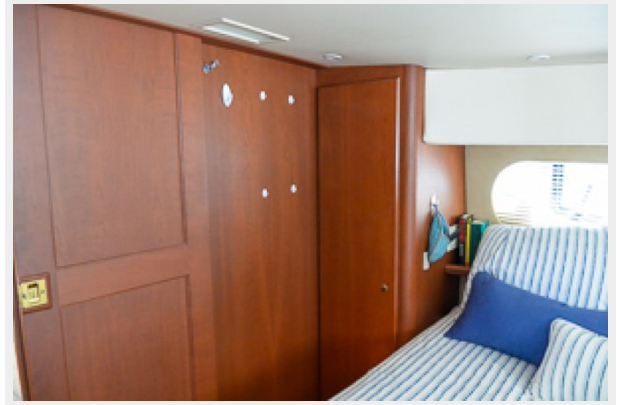
48_2784252_



49_2784252_



50_2784252_



51_2784252_



52_2784252_



53_2784252_



54_2784252_



55_2784252_



56_2784252_



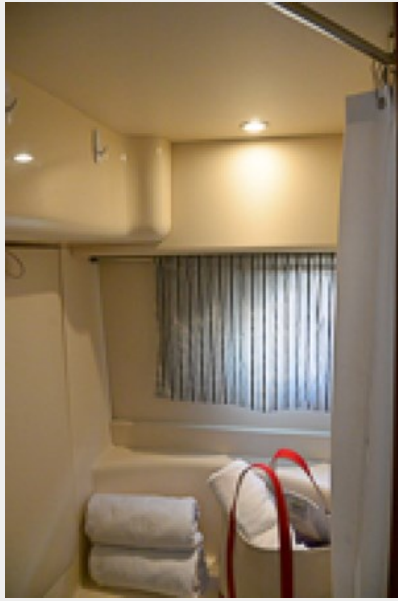
57_2784252_



58_2784252_



59_2784252_



60_2784252_



61_2784252_



62_2784252_



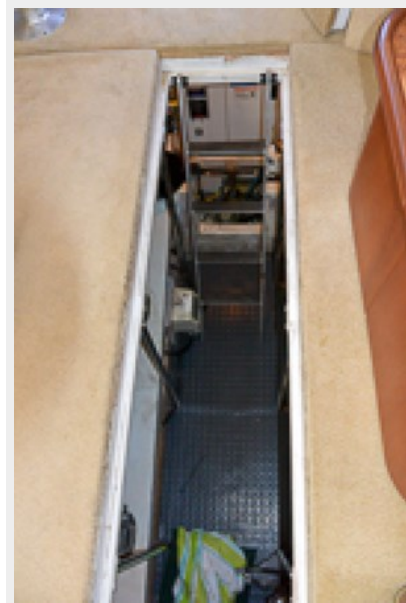
63_2784252_



64_2784252_



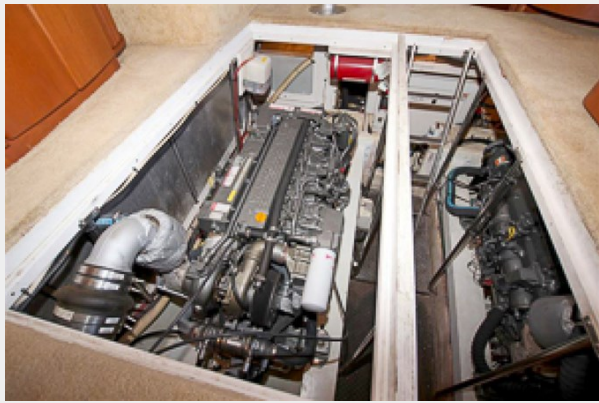
66_2784252_



65_2784252_



67_2784252_



68_2784252_



69_2784252_



70_2784252_



71_2784252_



72_2784252_



73_2784252_



74_2784252_



75_2784252_



76_2784252_



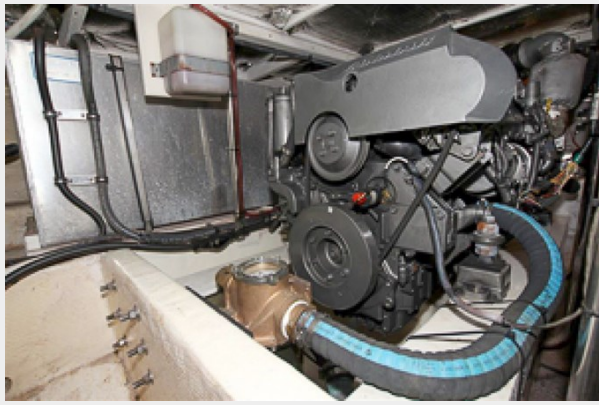
77_2784252_



78_2784252_



79_2784252_



80_2784252_



81_2784252_



82_2784252_



83_2784252_



CONTACTS

Andrey Shestakov, leading yacht broker of the sales department of Shestakov Yacht Sales Inc. Shestakov Yacht Sales Inc., the official representative of the Miami/Fort Lauderdale FL headquarters.

Contact details

Email: **andrey@shestakovyachtsales.com**

Web: shestakovyachtsales.com/en/

Telephones

USA: **+1(954)274-4435**

Office hours

Monday – Saturday: **9:00 - 21:00** EDT

Sunday: **closed**

Address



Harbour Towne Marina, 850 NE 3rd St, STE 213, Dania, FL 33004