

GINGER GALE — BAYLINER



Builder: BAYLINER

Year Built: 1988

Model: Motor Yacht

Price: PRICE ON APPLICATION

LOA: 38' (11.58mm)

Beam: 13.41

Max Draft: 3' 2" (0.97mm)

Cruise Speed: 8 Knots Kts. (9 MPH)

Max Speed: 15 Knots Kts. (17 MPH)

Our experienced yacht broker, Andrey Shestakov, will help you choose and buy a yacht that best suits your needs **Ginger Gale — BAYLINER** from our catalogue. Presently, at Shestakov Yacht Sales Inc., we have a wide variety of yachts available on our sale's list. We also work in close contact with all the big yacht manufacturers from all over the world.

If you would like to buy a yacht **Ginger Gale — BAYLINER** or would like help answering any questions concerning purchasing, selling or chartering a yacht, please call **+1(954)274-4435**

TABLE OF CONTENTS

TABLE OF CONTENTS	2
SPECIFICATIONS	5
Overview	5
Basic Information	5
Dimensions	5
Speed, Capacities and Weight	6
Accommodations	6
Hull and Deck Information	6
Engine Information	6
PHOTOS	7
01	7
02	7
03	7
04	7
05	8
06	8
07	8
08	8
09	8
10	8
11	9
12	9
13	9
14	9
15	9
16	9
17	9
18	9

19	10
20	10
21	10
22	10
23	10
24	10
25	10
26	10
27	11
28	11
29	11
30	11
31	11
32	11
33	11
34	11
35	12
36	12
37	12
38	12
39	12
40	12
41	12
42	12
43	13
44	13
45	13
46	13
47	13

48	13
49	13
50	13
51	14
52	14
53	14
54	14
55	14
56	14
57	15
58	15
59	15
60	15
61	15
62	15
63	16
64	16
65	16
66	16
67	16
68	16
69	16
70	16
71	17
CONTACTS	18
Contact details	18
Telephones	18
Office hours	18
Address	18

SPECIFICATIONS

Overview

Check this Great Loop Veteran Boat out!

New to the market, her owners have just completed the Loop and have decided to put her on the market.

This Bayliner 3818 is spacious with plenty of room for everyone. The two cabin layout affords two double berths, one central head and shower with a private head for the V Berth. She's very accommodating for both short and long range cruising.

Recent Upgrades:

- New salon upholstery
- New carpet
- New AIS Garmin 800
- New electric head
- Remodeled Shower and Head
- New Racor filters
- New isinglass stern enclosure (never used)

Basic Information

Category: Motor Yacht

Model Year: 1988

Year Built: 1988

Dimensions

LOA: 38' (11.58mm)

Beam: 13.41

Max Draft: 3' 2" (0.97mm)

Speed, Capacities and Weight

Cruise Speed: 8 Knots Kts. (9 MPH)

Max Speed: 15 Knots Kts. (17 MPH)

Water Capacity: 80 Gallons

Holding Tank: 40 Gal Gallons

Fuel Capacity: 304 Gal Gallons

Accommodations

Total Cabins: 2

Total Berths: 2

Total Heads: 2

Hull and Deck Information

Hull Material: Fiberglass

Engine Information

Engines: 2

Manufacturer: Hino

Engine Type: Inboard

Fuel Type: Diesel

PHOTOS

01



02



03



04



05



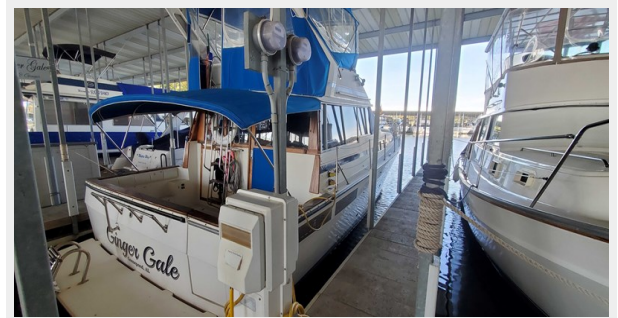
06



07



08



09



10



11



12



13



14



15



16



17



18



19



20



21



22



23



24



25



26



27



28



29



30



31



32



33



34



35



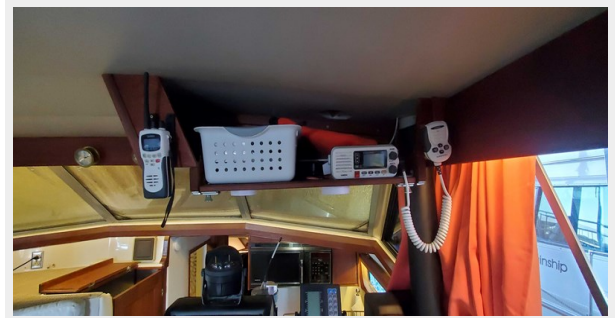
36



37



38



39



40



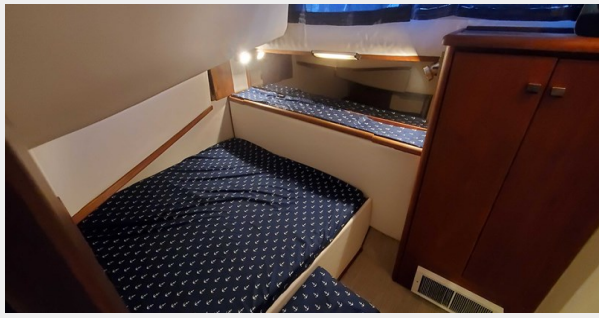
41



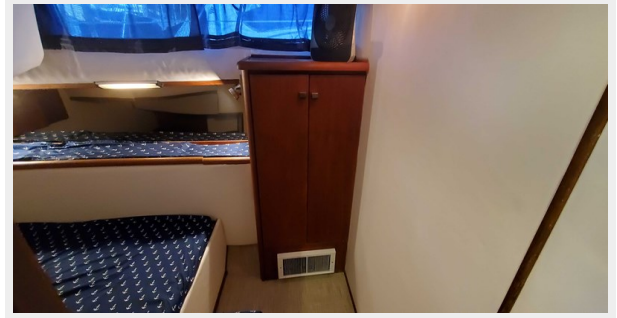
42



43



44



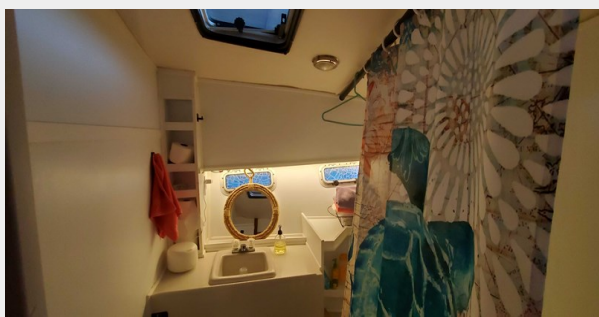
45



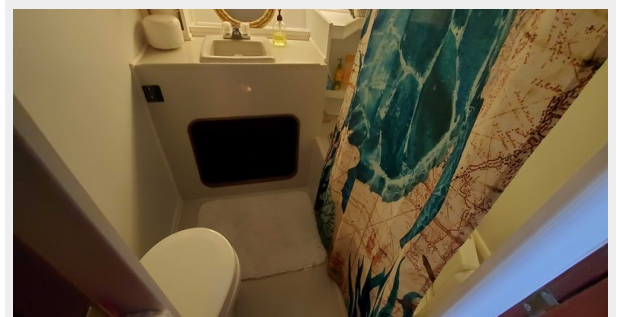
46



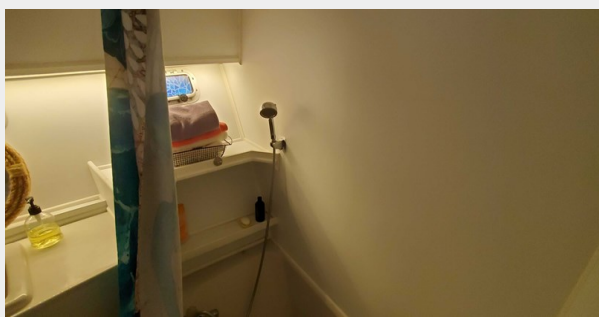
47



48



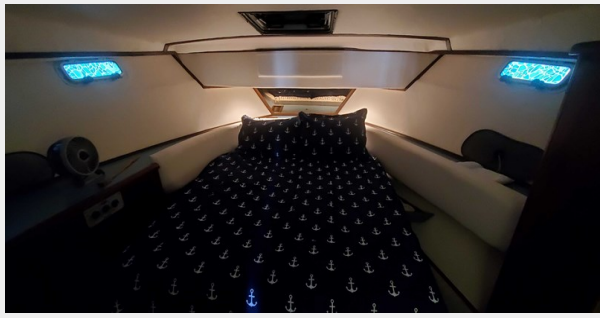
49



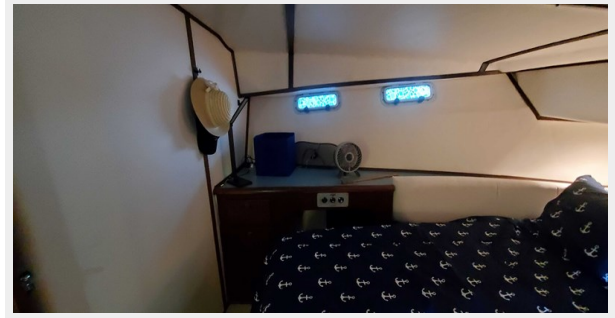
50



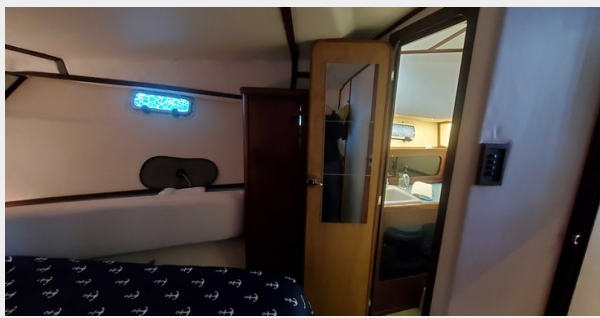
51



52



53



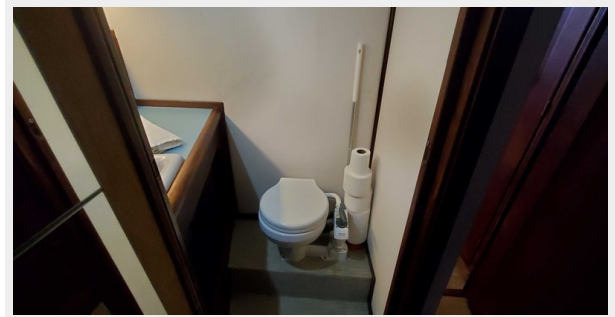
54



55



56



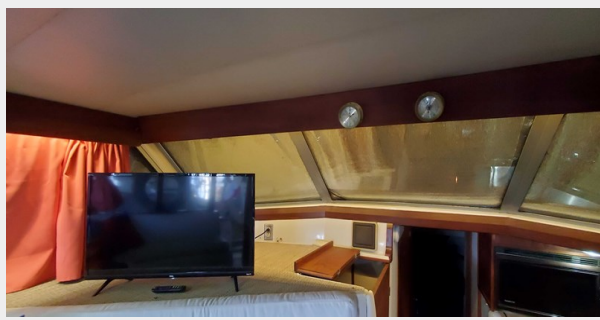
57



58



59



60



61



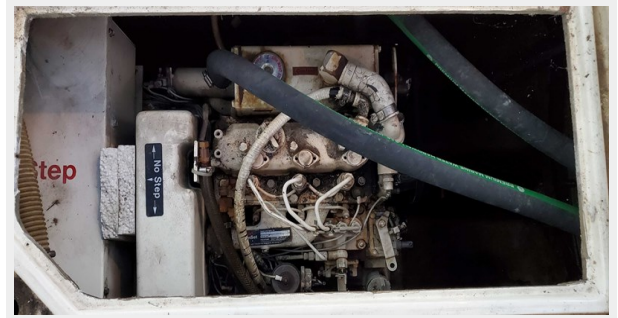
62



63



64



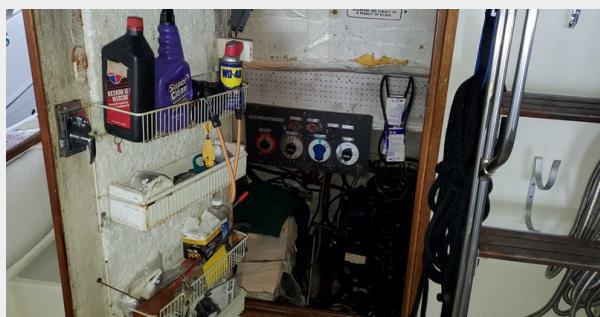
65



66



67



68



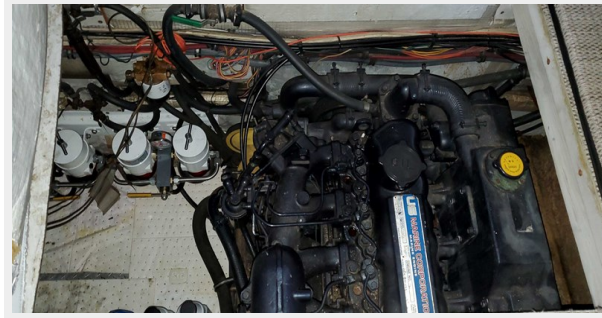
69



70



71



CONTACTS

Andrey Shestakov, leading yacht broker of the sales department of Shestakov Yacht Sales Inc. Shestakov Yacht Sales Inc., the official representative of the Miami/Fort Lauderdale FL headquarters.

Contact details

Email: andrey@shestakovyachtsales.com

Web: shestakovyachtsales.com/en/

Telephones

USA: +1(954)274-4435

Office hours

Monday – Saturday: **9:00 - 21:00** EDT

Sunday: **closed**

Address



Harbour Towne Marina, 850 NE 3rd St,
STE 213, Dania, FL 33004